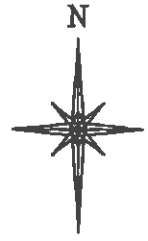
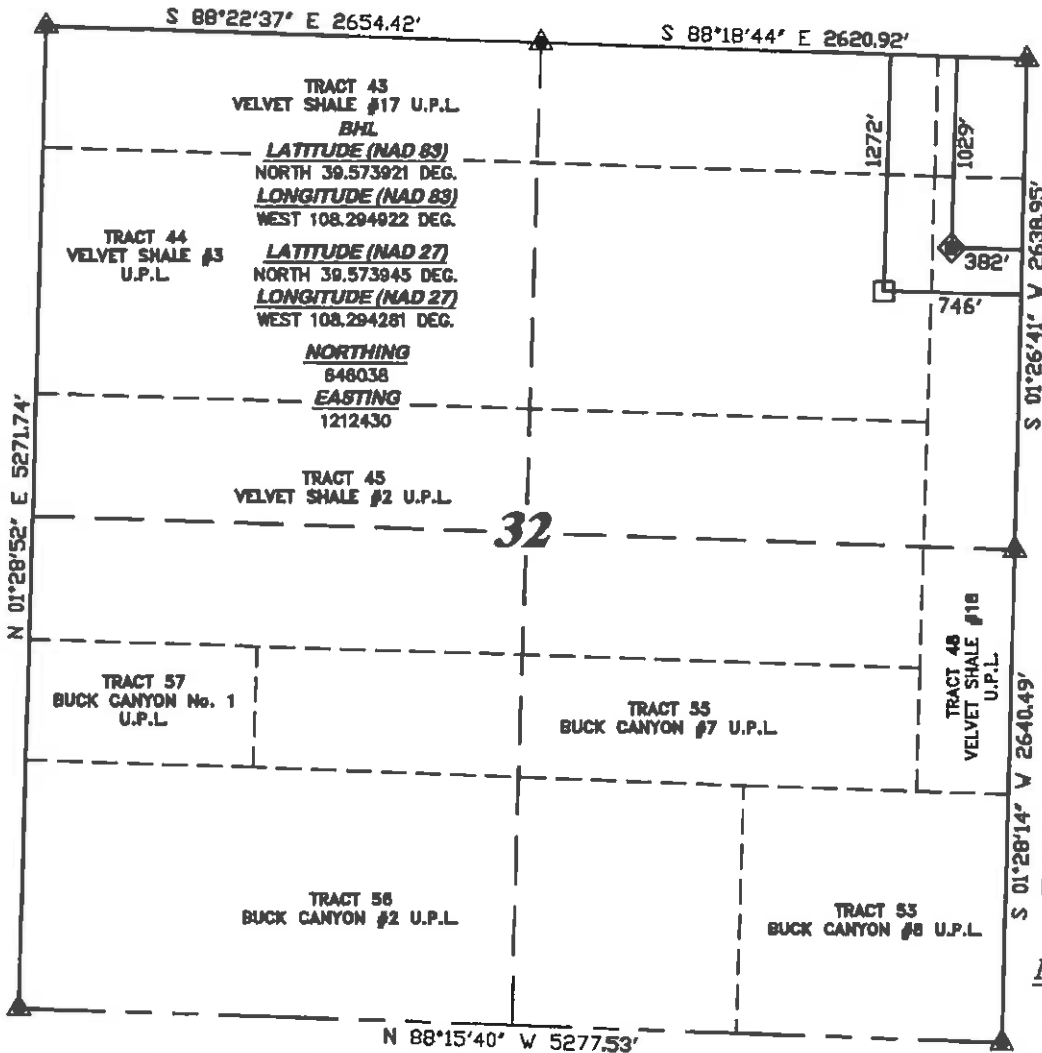


**R. 97 W.**



SCALE 1" = 1000'

**T. 5 S.**



**LATITUDE (NAD 83)**  
NORTH 39.574589 DEG.  
**LONGITUDE (NAD 83)**  
WEST 108.293636 DEG.

**LATITUDE (NAD 27)**  
NORTH 39.574613 DEG.  
**LONGITUDE (NAD 27)**  
WEST 108.292994 DEG.

**NORTHING**  
646270.15  
**EASTING**  
1212799.58

**BASIS OF BEARING/DATUM**  
SPCS CO CENTRAL NAD 27  
BASED ON NGS TRIANGULATION  
STATION "MARC"

**NOTES**

HIGH PLATEAU DESERT  
EXISTING WELL FEATURES WITHIN  
400' RADIUS OF WELL SITE.  
  
GPS OPERATOR MARK BESSIE  
OBSERVED A PDOP OF 2.8.  
ALL GPS OBSERVATIONS ARE IN  
COMPLIANCE WITH COGCC RULE No.215.

**CHEVRON TR**  
**541-32-597**  
**UNGRADED ELEVATION:**  
**8259.7'**

BASIS OF ELEVATION: USGS  
CONTROL POINT ELEVATION LOCATED  
AT THE SW CORNER SECTION 28,  
T5S, R97W, ELEVATION: 7913'

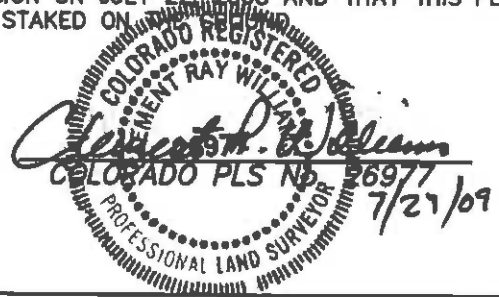


**SURVEYOR'S STATEMENT**

I, CLEMENT R. WILLIAMS, OF ROCK SPRINGS, WYOMING, HEREBY STATE: THIS MAP WAS MADE FROM NOTES TAKEN DURING AN ACTUAL FIELD SURVEY DONE UNDER MY DIRECT SUPERVISION ON JULY 22, 2008 AND THAT THIS PLAT CORRECTLY SHOWS THE LOCATION OF CHEVRON TR 541-32-597 AS STAKED ON

**LEGEND**

- ◆ WELL LOCATION
- BOTTOM HOLE LOC. (APPROX)
- FOUND MONUMENT
- ▲ PREVIOUSLY FOUND MONUMENT



CHEVRON TR 41-32-597 PAD

**DRG** RIFFIN & ASSOCIATES, INC.  
1414 ELK ST., ROCK SPRINGS, WY 82901  
(307) 382-5028

**PLAT OF DRILLING LOCATION**  
**FOR**  
**WILLIAMS PRODUCTION RMT COMPANY**

DRAWN: 7/27/09 - MMM	SCALE: 1" = 1000'
REVISED: NA	DRG JOB No. 13208
EXHIBIT 1	

**1029' F/NL & 382' F/EL, SECTION 32,**  
**T. 5 S., R. 97 W., 6th P.M.**  
**GARFIELD COUNTY, COLORADO**