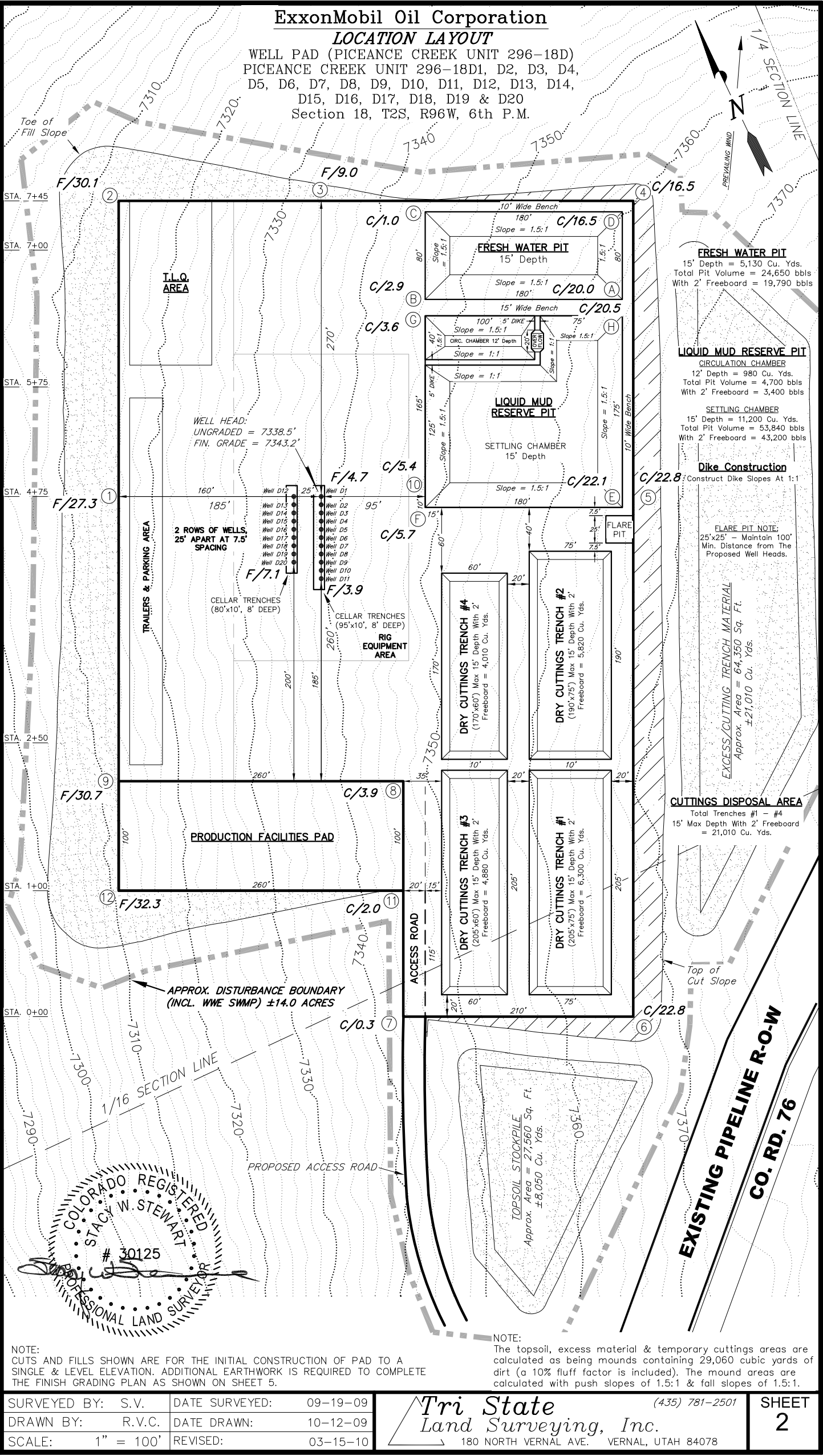


ExxonMobil Oil Corporation

LOCATION LAYOUT

WELL PAD (PICEANCE CREEK UNIT 296-18D)
PICEANCE CREEK UNIT 296-18D1, D2, D3, D4,
D5, D6, D7, D8, D9, D10, D11, D12, D13, D14,
D15, D16, D17, D18, D19 & D20
Section 18, T2S, R96W, 6th P.M.



NOTE:
CUTS AND FILLS SHOWN ARE FOR THE INITIAL CONSTRUCTION OF PAD TO A
SINGLE & LEVEL ELEVATION. ADDITIONAL EARTHWORK IS REQUIRED TO COMPLETE
THE FINISH GRADING PLAN AS SHOWN ON SHEET 5.

NOTE:
The topsoil, excess material & temporary cuttings areas are
calculated as being mounds containing 29,060 cubic yards of
dirt (a 10% fluff factor is included). The mound areas are
calculated with push slopes of 1.5:1 & fall slopes of 1.5:1.

SURVEYED BY:	S.V.	DATE SURVEYED:	09-19-09
DRAWN BY:	R.V.C.	DATE DRAWN:	10-12-09
SCALE:	1" = 100'	REVISED:	03-15-10

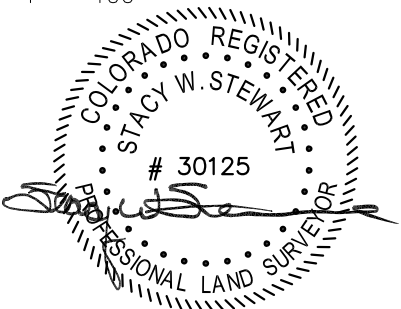
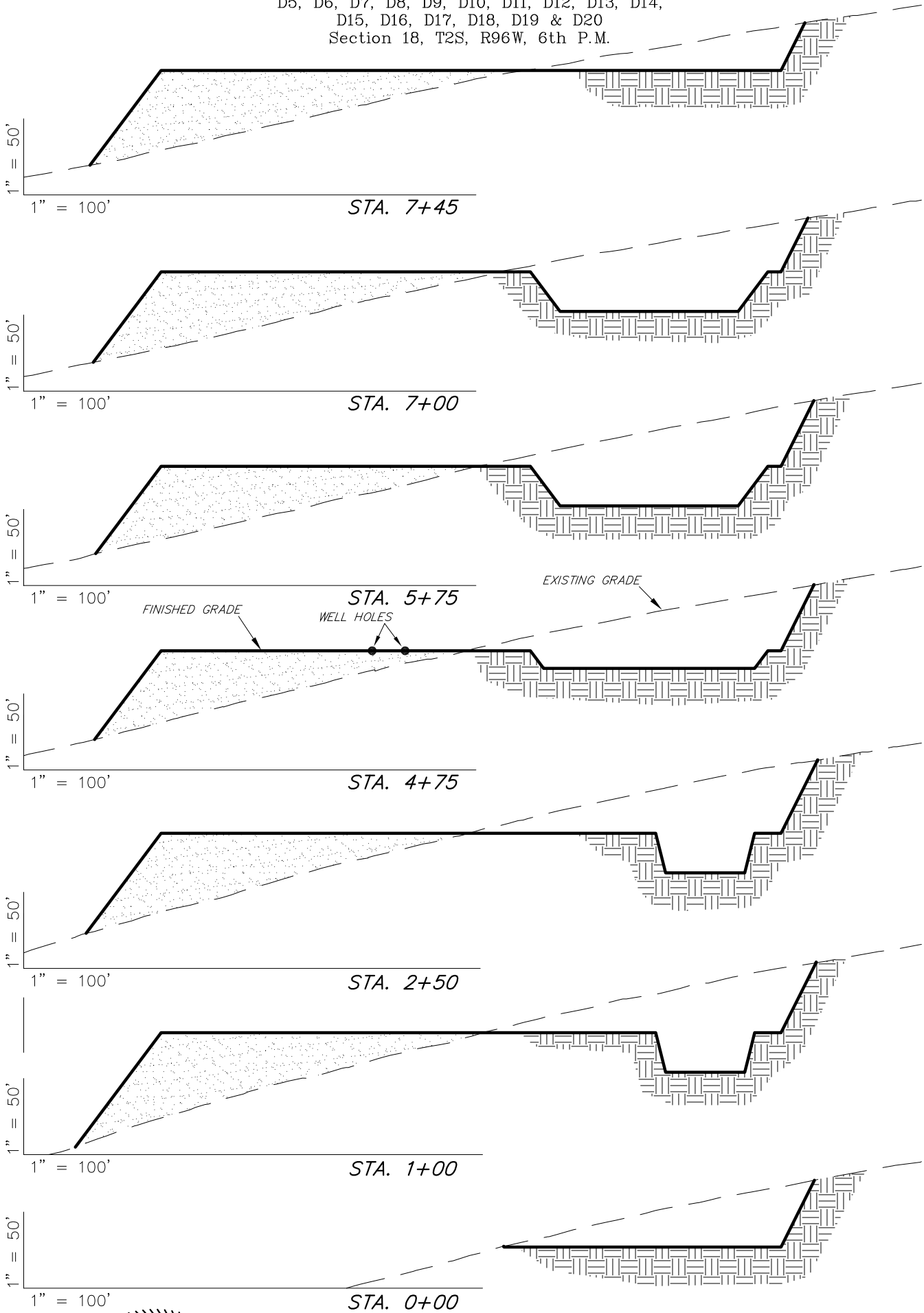
Tri State
Land Surveying, Inc.
180 NORTH VERNAL AVE. VERNAL, UTAH 84078
(435) 781-2501

SHEET
2

ExxonMobil Oil Corporation

CROSS SECTIONS

WELL PAD (PICEANCE CREEK UNIT 296-18D)
PICEANCE CREEK UNIT 296-18D1, D2, D3, D4,
D5, D6, D7, D8, D9, D10, D11, D12, D13, D14,
D15, D16, D17, D18, D19 & D20
Section 18, T2S, R96W, 6th P.M.



NOTES:
1.) UNLESS OTHERWISE NOTED, CUT SLOPES ARE AT 1:1
& FILL SLOPES ARE AT 1.5:1.

ESTIMATED EARTHWORK QUANTITIES (No Shrink or swell adjustments have been used) (Expressed in Cubic Yards)				
ITEM	CUT	FILL	6" TOPSOIL	EXCESS
CUTTINGS TRENCH 1 & 2	14,270	0	Topsoil is not included in Pad Cut	14,270
PITS	17,310	0		17,310
PAD	83,650	106,650	7,320	-23,000
TOTALS	115,230	106,650	7,320	8,580

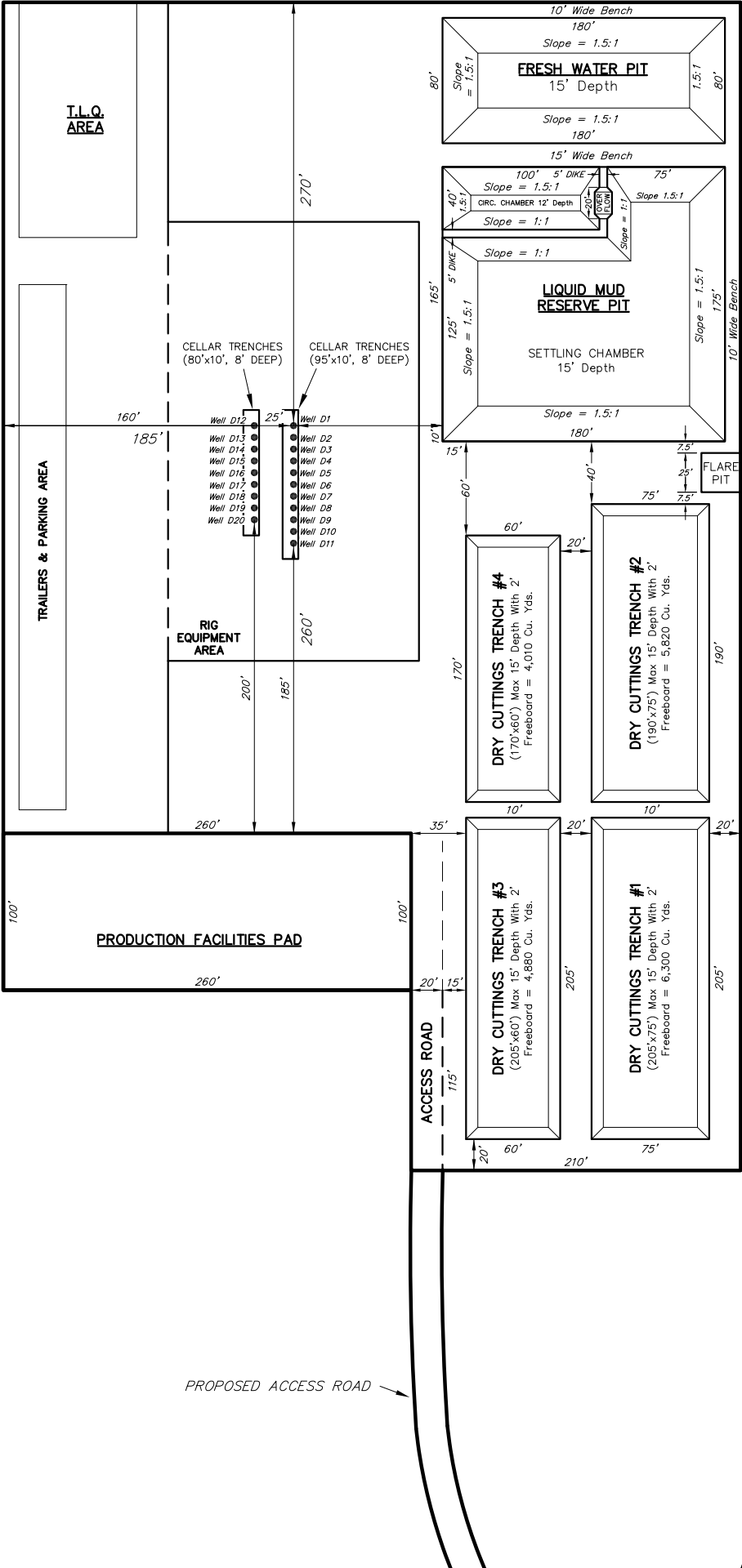
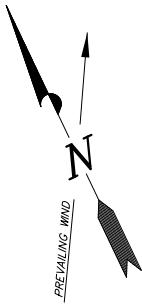
SURVEYED BY: S.V.	DATE SURVEYED: 09-19-09
DRAWN BY: R.V.C.	DATE DRAWN: 10-12-09
SCALE: 1" = 100'	REVISED: 03-15-10

Tri State
Land Surveying, Inc.
180 NORTH VERNAL AVE. VERNAL, UTAH 84078
(435) 781-2501

ExxonMobil Oil Corporation

TYPICAL RIG LAYOUT

WELL PAD (PICEANCE CREEK UNIT 296-18D)
PICEANCE CREEK UNIT 296-18D1, D2, D3, D4,
D5, D6, D7, D8, D9, D10, D11, D12, D13, D14,
D15, D16, D17, D18, D19 & D20
Section 18, T2S, R96W, 6th P.M.



SURVEYED BY:	S.V.	DATE SURVEYED:	09-19-09
DRAWN BY:	R.V.C.	DATE DRAWN:	10-12-09
SCALE:	1" = 100'	REVISED:	F.T.M. 12-17-09

Tri State

Land Surveying, Inc.

180 NORTH VERNAL AVE. VERNAL, UTAH 84078

(435) 781-2501

SHEET 4

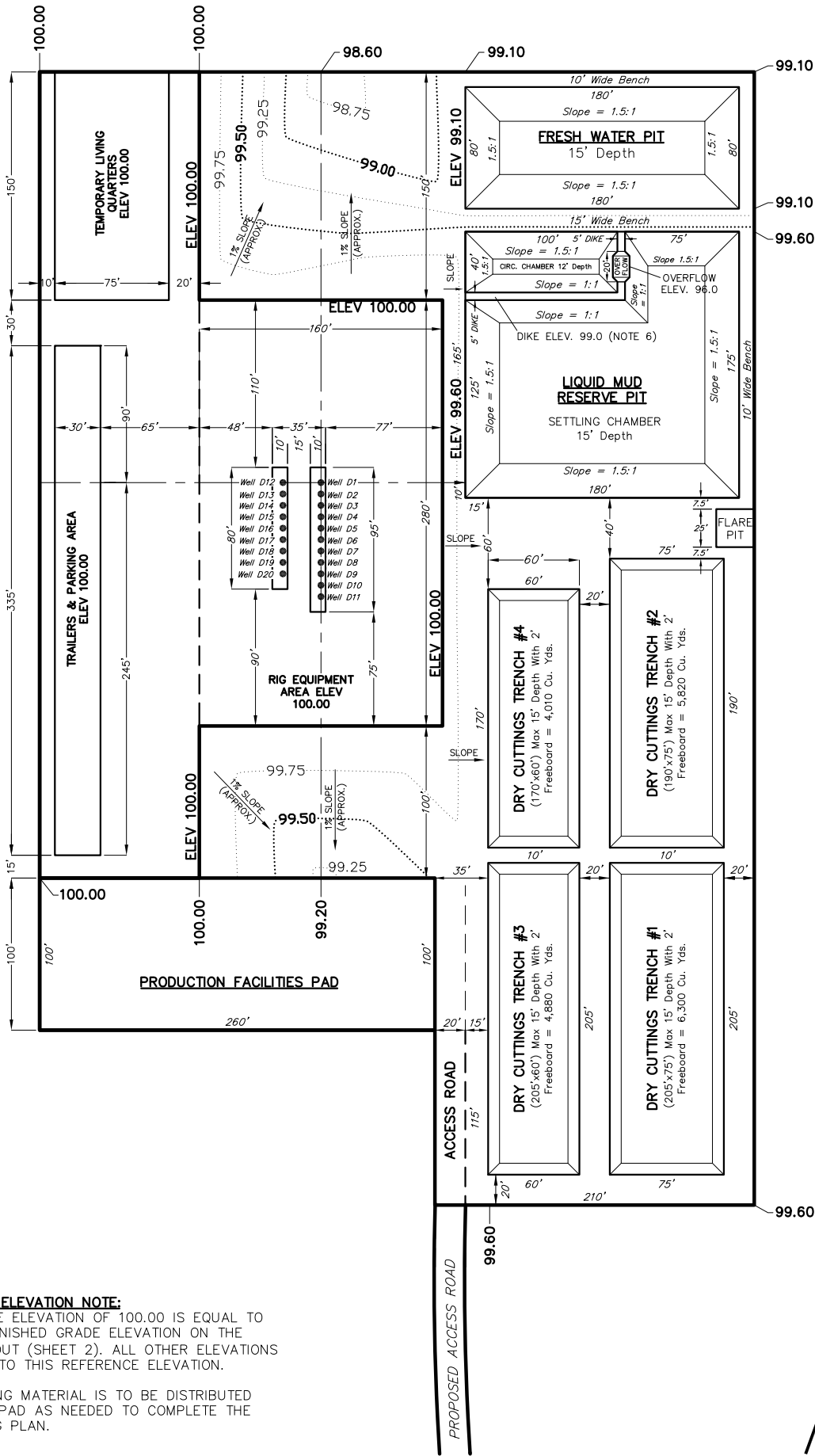
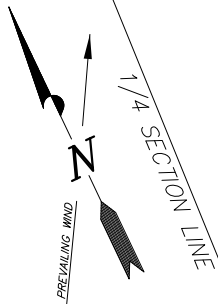
EXISTING PIPELINE R-O-W
CO. RD. 76

ExxonMobil Oil Corporation

TYPICAL FINISH GRADING PLAN

WELL PAD (PICEANCE CREEK UNIT 296-18D)
PICEANCE CREEK UNIT 296-18D1, D2, D3, D4,
D5, D6, D7, D8, D9, D10, D11, D12, D13, D14,
D15, D16, D17, D18, D19 & D20
Section 18, T2S, R96W, 6th P.M.

FIGURE #4



CONTOUR AND ELEVATION NOTE:

THE REFERENCE ELEVATION OF 100.00 IS EQUAL TO THE ACTUAL FINISHED GRADE ELEVATION ON THE LOCATION LAYOUT (SHEET 2). ALL OTHER ELEVATIONS ARE RELATIVE TO THIS REFERENCE ELEVATION.

* FINAL GRADING MATERIAL IS TO BE DISTRIBUTED ACCROSS THE PAD AS NEEDED TO COMPLETE THE FINISH GRADING PLAN.

Notes

1. Indicated row spacing for H&P "Flex 3" Drill Rig. H&P "Flex 4" will require 10'-0".
2. Rig Substructure Area to be level. Compaction and testing per wellpad construction specification.
3. Perimeter ditching not shown. Grading plan to be coordinated with approved Individual Storm Water Management Plan for each site.
4. Cuttings Trench #1 to be constructed with wellpad. Additional trenches (#2 & #3) will be constructed during drilling operations as required.
5. Indicated spacing may be increased to 75' based upon site topography. Alternate access location may be selected based upon site topography and direction of primary (existing) access.
6. Excavate Reserve Pit to initial 12' depth. Construct diversion dike with 3.0' additional excavation from settling chamber.

SURVEYED BY:	S.V.	DATE SURVEYED:	09-19-09
DRAWN BY:	R.V.C.	DATE DRAWN:	10-12-09
SCALE:	1" = 100'	REVISED:	F.T.M. 12-17-09

Tri State
Land Surveying, Inc.
180 NORTH VERNAL AVE. VERNAL, UTAH 84078

(435) 781-2501

SHEET
5