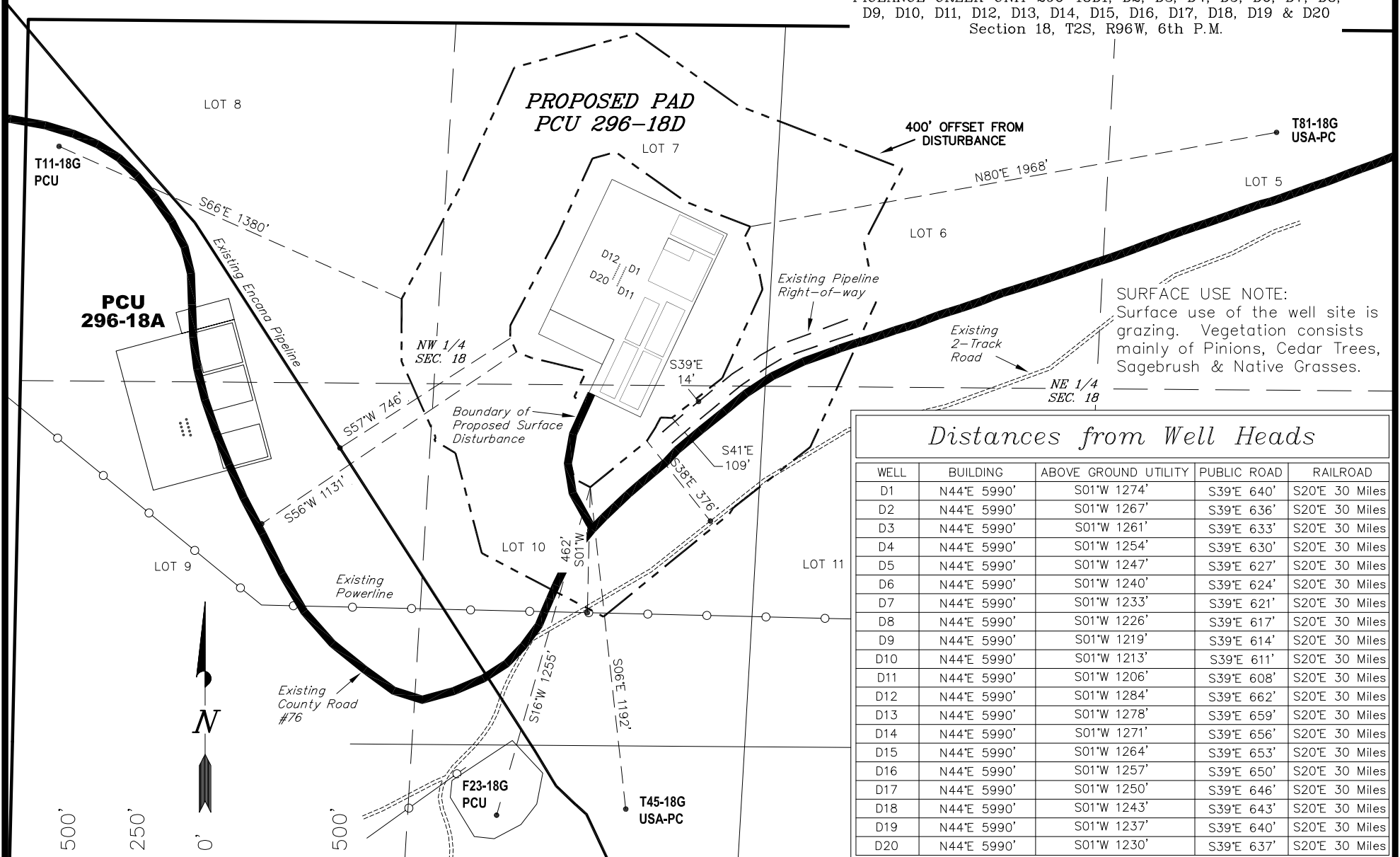


ExxonMobil Oil Corporation

ADDENDUM TO LEGAL PLATS FOR

WELL PAD (PICEANCE CREEK UNIT 296-18D)
PICEANCE CREEK UNIT 296-18D1, D2, D3, D4, D5, D6, D7, D8,
D9, D10, D11, D12, D13, D14, D15, D16, D17, D18, D19 & D20
Section 18, T2S, R96W, 6th P.M.

PROPOSED PAD PCU 296-18D



SURFACE USE NOTE:
Surface use of the well site is grazing. Vegetation consists mainly of Pinions, Cedar Trees, Sagebrush & Native Grasses.

Distances from Well Heads

WELL	BUILDING	ABOVE GROUND UTILITY	PUBLIC ROAD	RAILROAD
D1	N44°E 5990'	S01°W 1274'	S39°E 640'	S20°E 30 Miles
D2	N44°E 5990'	S01°W 1267'	S39°E 636'	S20°E 30 Miles
D3	N44°E 5990'	S01°W 1261'	S39°E 633'	S20°E 30 Miles
D4	N44°E 5990'	S01°W 1254'	S39°E 630'	S20°E 30 Miles
D5	N44°E 5990'	S01°W 1247'	S39°E 627'	S20°E 30 Miles
D6	N44°E 5990'	S01°W 1240'	S39°E 624'	S20°E 30 Miles
D7	N44°E 5990'	S01°W 1233'	S39°E 621'	S20°E 30 Miles
D8	N44°E 5990'	S01°W 1226'	S39°E 617'	S20°E 30 Miles
D9	N44°E 5990'	S01°W 1219'	S39°E 614'	S20°E 30 Miles
D10	N44°E 5990'	S01°W 1213'	S39°E 611'	S20°E 30 Miles
D11	N44°E 5990'	S01°W 1206'	S39°E 608'	S20°E 30 Miles
D12	N44°E 5990'	S01°W 1284'	S39°E 662'	S20°E 30 Miles
D13	N44°E 5990'	S01°W 1278'	S39°E 659'	S20°E 30 Miles
D14	N44°E 5990'	S01°W 1271'	S39°E 656'	S20°E 30 Miles
D15	N44°E 5990'	S01°W 1264'	S39°E 653'	S20°E 30 Miles
D16	N44°E 5990'	S01°W 1257'	S39°E 650'	S20°E 30 Miles
D17	N44°E 5990'	S01°W 1250'	S39°E 646'	S20°E 30 Miles
D18	N44°E 5990'	S01°W 1243'	S39°E 643'	S20°E 30 Miles
D19	N44°E 5990'	S01°W 1237'	S39°E 640'	S20°E 30 Miles
D20	N44°E 5990'	S01°W 1230'	S39°E 637'	S20°E 30 Miles

SURVEYED BY: S.V. SURVEY DATE: 09-19-09
DRAWN BY: F.T.M. DATE DRAWN: 12-17-09
SCALE: 1" = 500' REVISED:

Tri State
Land Surveying, Inc.

180 NORTH VERNAL AVE. VERNAL, UTAH 84078

SHEET
1u