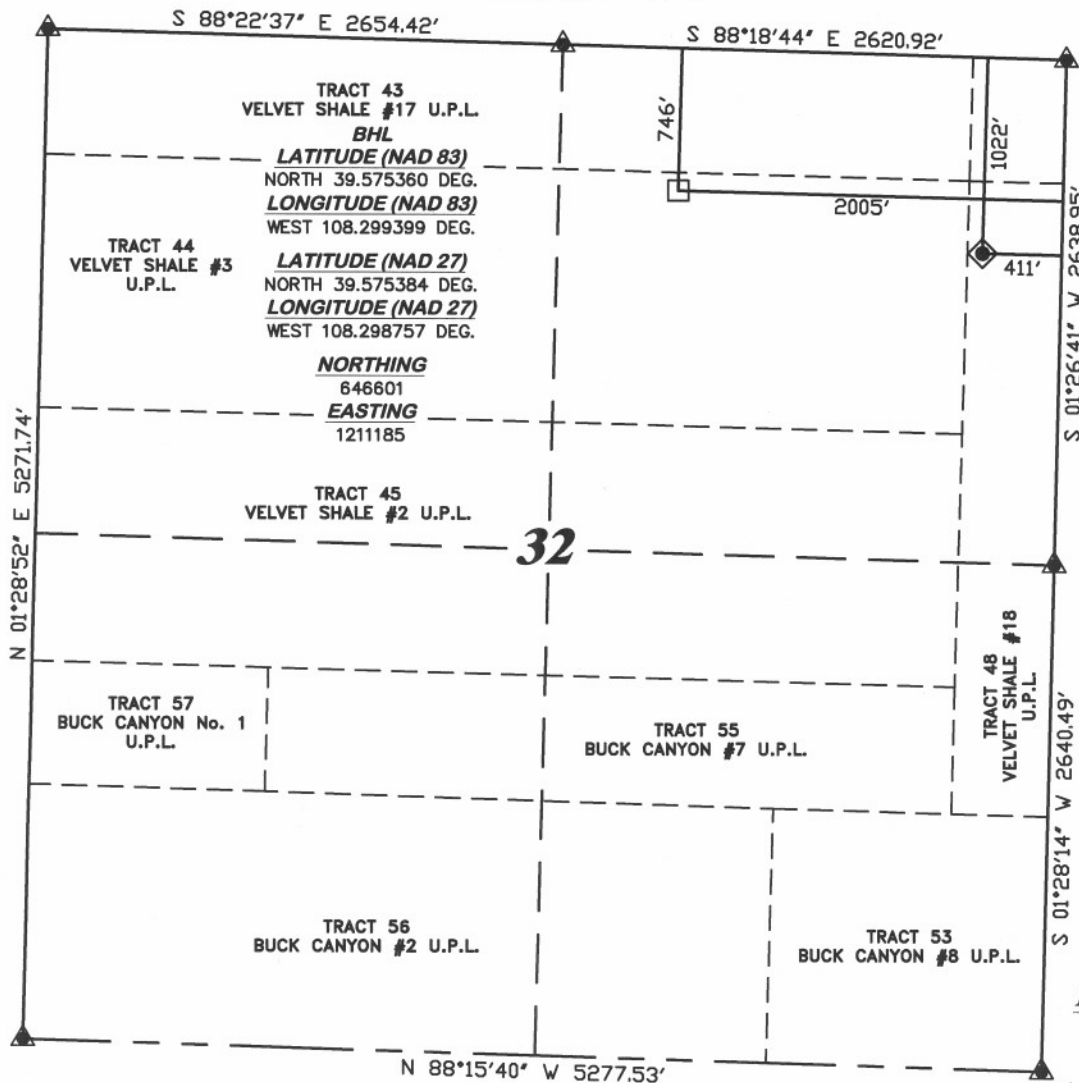


# R. 97 W.



SCALE 1" = 1000'  
**T. 5 S.**

**LATITUDE (NAD 83)**  
NORTH 39.574608 DEG.  
**LONGITUDE (NAD 83)**  
WEST 108.293739 DEG.  
**LATITUDE (NAD 27)**  
NORTH 39.574632 DEG.  
**LONGITUDE (NAD 27)**  
WEST 108.293098 DEG.

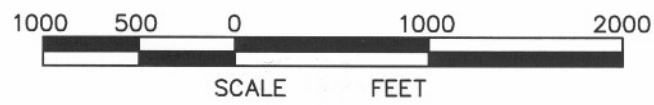
**NORTHING**  
646277.96  
**EASTING**  
1212770.62

**BASIS OF BEARING/DATUM**  
SPCS CO CENTRAL NAD 27  
BASED ON NGS TRIANGULATION  
STATION "MARC"

**NOTES**  
HIGH PLATEAU DESERT  
EXISTING WELL FEATURES WITHIN  
400' RADIUS OF WELL SITE.  
GPS OPERATOR MARK BESSIE  
OBSERVED A PDOP OF 2.8.  
ALL GPS OBSERVATIONS ARE IN  
COMPLIANCE WITH COGCC RULE No.215.

**CHEVRON TR**  
**431-32-597**  
**UNGRADED ELEVATION:**  
**8260.0'**

BASIS OF ELEVATION: USGS  
CONTROL POINT ELEVATION LOCATED  
AT THE SW CORNER SECTION 28,  
T5S, R97W, ELEVATION: 7913'

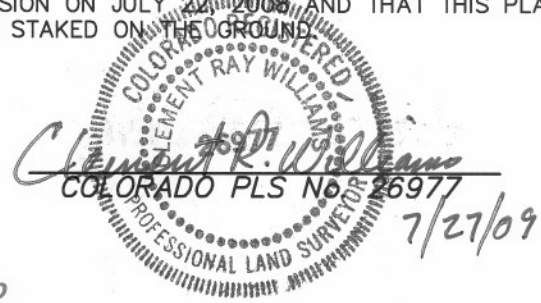


**SURVEYOR'S STATEMENT**

I, CLEMENT R. WILLIAMS, OF ROCK SPRINGS, WYOMING, HEREBY STATE: THIS MAP WAS MADE FROM NOTES TAKEN DURING AN ACTUAL FIELD SURVEY DONE UNDER MY DIRECT SUPERVISION ON JULY 22, 2009 AND THAT THIS PLAT CORRECTLY SHOWS THE LOCATION OF CHEVRON TR 431-32-597 AS STAKED ON THE GROUND.

**LEGEND**

- ◆ WELL LOCATION
- BOTTOM HOLE LOC. (APPROX)
- FOUND MONUMENT
- ▲ PREVIOUSLY FOUND MONUMENT



CHEVRON TR 41-32-597 PAD

<b>DRG RIFFIN &amp; ASSOCIATES, INC.</b> (307) 362-5028 1414 ELK ST., ROCK SPRINGS, WY 82901	
<b>DRAWN:</b> 7/27/09 - MMM	<b>SCALE:</b> 1" = 1000'
<b>REVISED:</b> NA	<b>DRG JOB No.</b> 13206
<b>EXHIBIT 1</b>	

**PLAT OF DRILLING LOCATION  
FOR  
WILLIAMS PRODUCTION RMT COMPANY**

**1022' F/NL & 411' F/EL, SECTION 32,  
T. 5 S., R. 97 W., 6th P.M.  
GARFIELD COUNTY, COLORADO**