

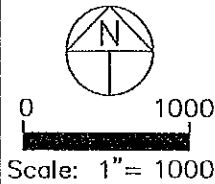
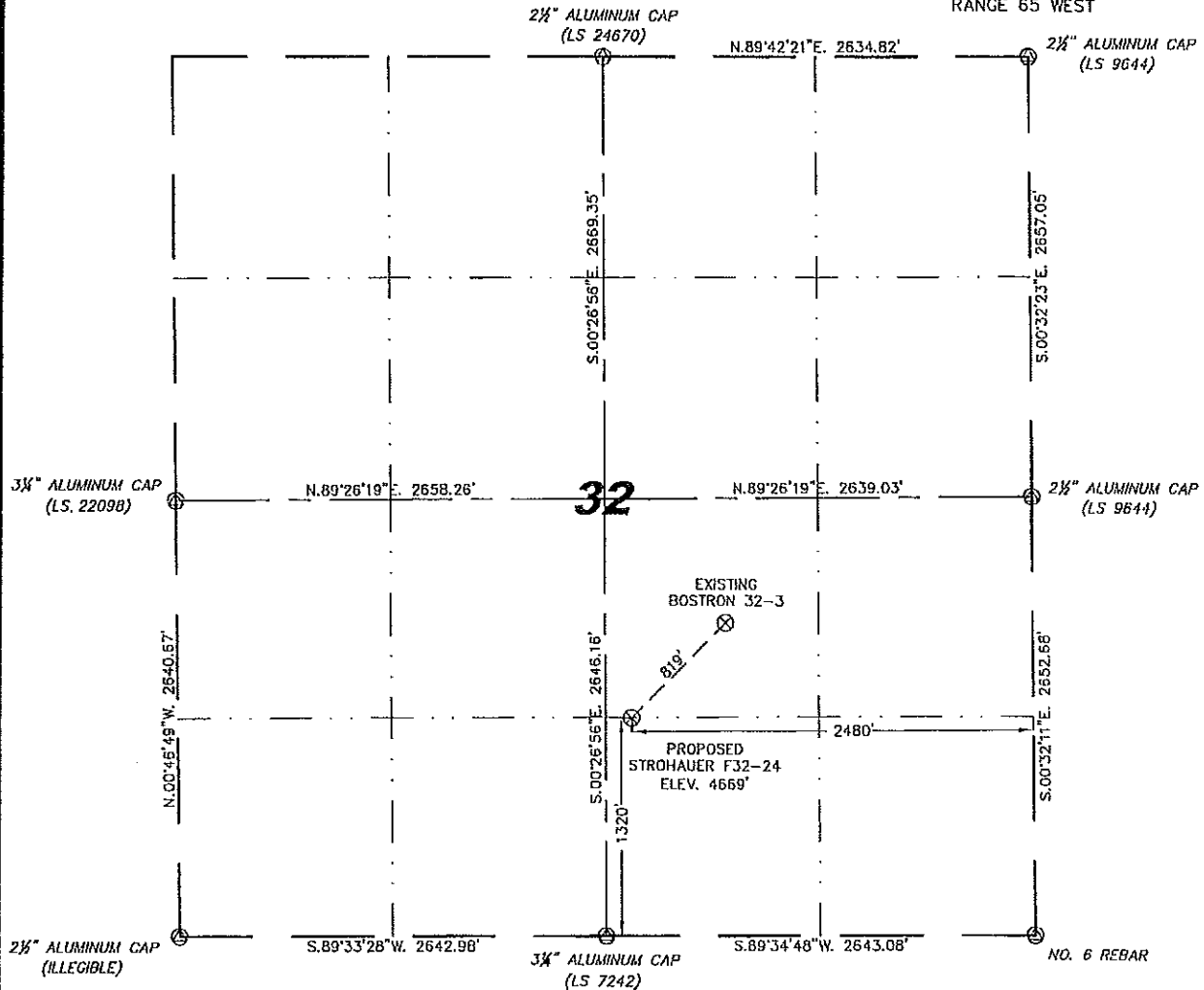
Stiel Surveying Services, LLC

1102 West 19th Street P.O. BOX 2073

Cheyenne, Wyoming 82009

### WELL LOCATION CERTIFICATE THIS MAP DOES NOT REPRESENT A BOUNDARY SURVEY

SECTION 32  
TOWNSHIP 5 NORTH  
RANGE 65 WEST



IN ACCORDANCE WITH A REQUEST FROM ROBBIE MILLER - NOBLE ENERGY INC, STEIL SURVEYING SERVICES, LLC HAS DETERMINED THE LOCATION OF THE STROHAUER F32-24 WELL TO BE 1320' FSL, 2480' FEL, AS MEASURED AT NINETY (90) DEGREES FROM THE SECTION LINES, SECTION 32, TOWNSHIP 5 NORTH, RANGE 65 WEST, 6TH PRINCIPLE MERIDIAN, WELD COUNTY, COLORADO.

I HEREBY CERTIFY THAT THIS WELL LOCATION CERTIFICATE WAS PREPARED BY ME, OR UNDER MY DIRECT SUPERVISION, THAT THE FIELD WORK WAS COMPLETED ON 11/12/2009, FOR AND ON BEHALF OF NOBLE ENERGY INC, THAT IT IS NOT A LAND SURVEY PLAT OR AN IMPROVEMENT SURVEY PLAT, AND THAT IT IS NOT TO BE RELIED UPON FOR ESTABLISHMENT OF FENCE, BUILDING, OR OTHER FUTURE IMPROVEMENT LINES.

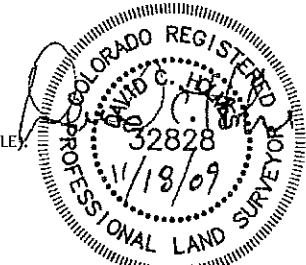
**NOTES:**

- 1) BASIS OF BEARINGS FOR THIS MAP ARE BASED UPON GPS OBSERVATIONS MADE ON 08/25/2008 BETWEEN MONUMENTS LOCATED AT THE SOUTHEAST SECTION CORNER AND THE NORTHEAST SECTION CORNER OF SAID SECTION AND WITH ALL BEARINGS SHOWN HEREON RELATIVE THERETO.
- 2) ELEVATIONS ARE BASED UPON NGS OPUS SOLUTION NAVD 88 DATUM.
- 3) THE NEAREST EXISTING WELL IS: BOSTRON 32-3, 819' NORTHEAST.
- 4) SEE VISIBLE IMPROVEMENTS EXHIBIT FOR ALL IMPROVEMENTS WITHIN 400'.
- 5) THE LOCATION FALLS IN IRRIGATED CROP LAND.

LATITUDE & LONGITUDE (NAD 83 SURFACE HOLE).  
 LATITUDE: N 40.35211'  
 LONGITUDE: W 104.68675'  
 PDDP: 3.2  
 QUARTER-QUARTER: SW/4SE/4  
 NEAREST PROPERTY LINE: 161' TO THE WEST

**LEGEND**

- (⊗) FOUND SURVEY MONUMENT PER MONUMENT RECORD - EXCEPTIONS NOTED.
- (C) CALCULATED DIMENSION

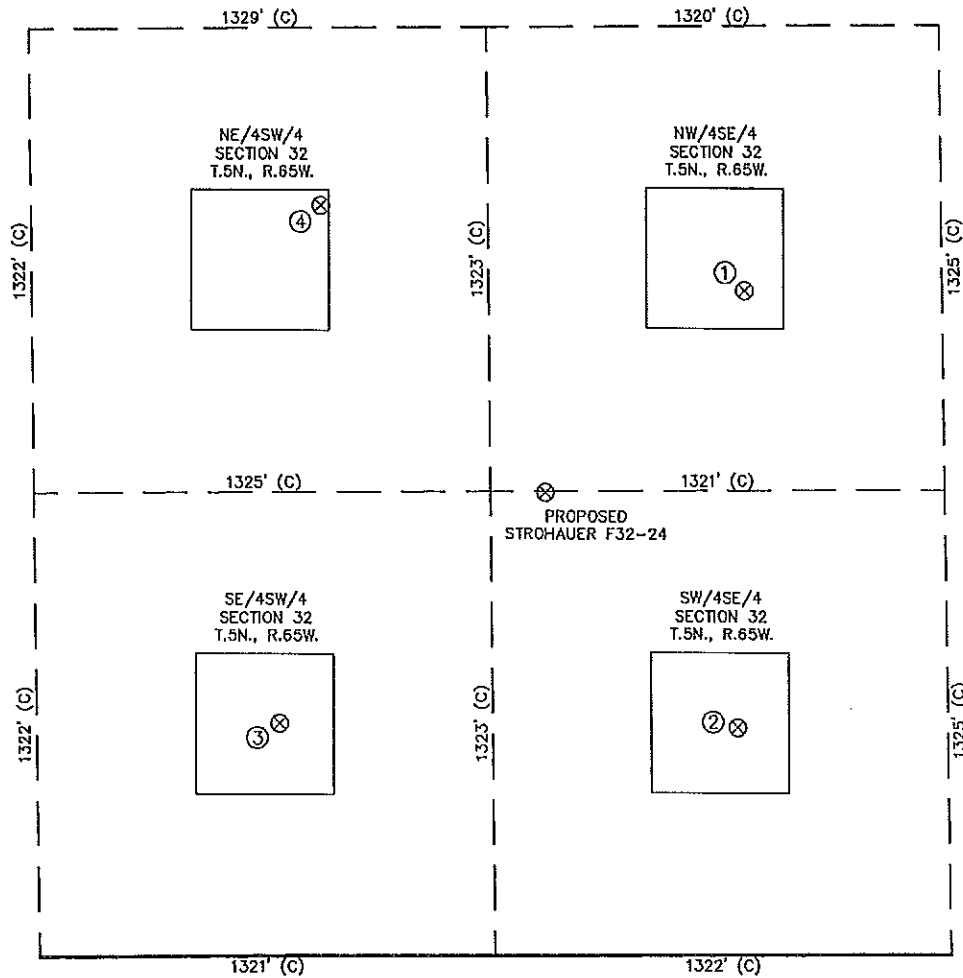


**NOTICE:** According to Colorado law you MUST commence any legal action based upon any defect in this W.L.C. within three years after you first discover such defect. In no event may any action based upon any defect in this W.L.C. be commenced more than ten years from this said date of the certification shown hereon.

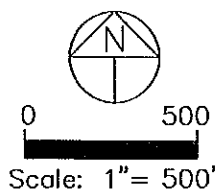
Completed 11/17/2009  
 David C. Holmes  
 Professional Land Surveyor Registration No. 32828  
 State of Colorado  
 JOB #: 09088

SITE SKETCH - STROHAUER F32-24

SECTION 32  
TOWNSHIP 5 NORTH  
RANGE 65 WEST



①	②	③	④
BOSTRON 32-3 NW/SE SEC. 32 1893' FSL 1894' FEL EL 4668' N 40.35368 W 104.68465 PDOP 1.8	BOSTRON NO. 1 SW/SE SEC. 32 648' FSL 1930' FEL EL 4671' N 40.35026 W 104.68478 PDOP 2.0	STEWART NO. 2 SE/SW SEC. 32 659' FSL 2029' FWL EL 4671' N 40.36031 W 104.68955 PDOP 3.9	EWING 32-31 NE/SW SEC. 32 213B' FSL 2169' FWL EL 4670' N 40.35436 W 104.68907 PDOP 3.7



- NOTES:
- 1) THIS SKETCH DOES NOT REPRESENT A BOUNDARY SURVEY.
  - 2) THE DATUM FOR THE LATITUDES AND LONGITUDES ON THIS SKETCH IS NAD83.