

TABLE 1
SOIL SAMPLE ANALYTICAL RESULTS
EHRlich 32-7 (API No. 05-123-20196)
WELD COUNTY
PETROLEUM DEVELOPMENT CORPORATION

Sample ID	Depth (ft bgs)	Date Sampled	Benzene (mg/kg)	Toluene (mg/kg)	Ethyl-benzene (mg/kg)	Xylenes (mg/kg)	TPH (mg/kg)
E01	3	12/31/2008	NA	NA	NA	NA	<100
E02	3	12/31/2008	NA	NA	NA	NA	<100
E03	3	12/31/2008	NA	NA	NA	NA	<100
N01	3	12/24/2008	NA	NA	NA	NA	<100
S01	3	12/24/2008	NA	NA	NA	NA	<100
W01	3	12/24/2008	NA	NA	NA	NA	<100
W02	3	12/31/2008	NA	NA	NA	NA	<100
W03	3	12/31/2008	NA	NA	NA	NA	<100
COGCC Sensitive Area Standard			NS	NS	NS	NS	1000

Notes: < - less than stated laboratory reporting limit
TPH - Total Petroleum Hydrocarbons (C6-C28)
API - American Petroleum Institute
Bold numbers indicate result equalled or exceeded standard.
COGCC Sensitive Area Standard is taken from COGCC Table 910-1, prior to April 1, 2009.

NA - Not Analyzed
NS - No Standard
mg/kg - milligrams per kilogram
ft bgs - feet below ground surface

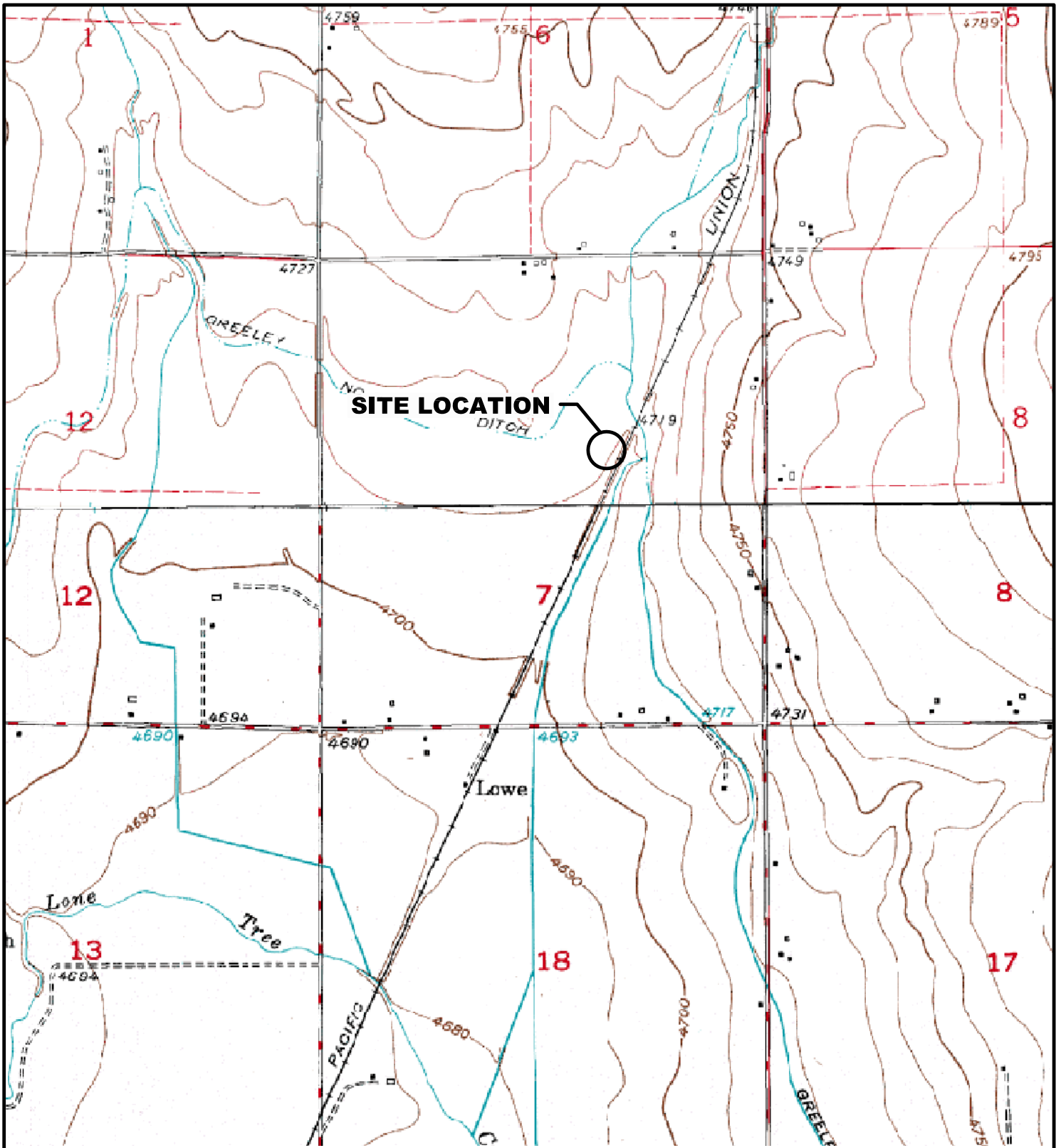


TABLE 2
GROUNDWATER ANALYTICAL AND FIELD PARAMETERS
EHRlich 32-7 (API No. 123-20196)
WELD COUNTY
PETROLEUM DEVELOPMENT CORPORATION

Sample ID	Date Sampled	Benzene (ug/L)	Toluene (ug/L)	Ethyl-benzene (ug/L)	Xylenes (ug/L)	Depth to Water (ft btoc)
GW01	12/29/2008	3800	3900	210	2900	NM
MW01	03/10/2009	20	<1.0	<1.0	<1.0	9.99
	06/19/2009	<1.0	<1.0	<1.0	<1.0	9.00
	09/23/2009	<1.0	<1.0	<1.0	<1.0	10.14
	12/09/2009	<1.0	<1.0	<1.0	<1.0	10.39
	03/18/2010	<1.0	<1.0	<1.0	<1.0	10.43
MW02	03/10/2009	<1.0	<1.0	<1.0	<1.0	10.14
	06/19/2009	<1.0	<1.0	<1.0	<1.0	9.87
	09/23/2009	<1.0	<1.0	<1.0	<1.0	10.66
	12/09/2009	<1.0	<1.0	<1.0	<1.0	10.85
	03/18/2010	<1.0	<1.0	<1.0	<1.0	10.89
MW03	03/10/2009	<1.0	<1.0	<1.0	<1.0	7.08
	06/19/2009	<1.0	<1.0	<1.0	<1.0	6.46
	09/23/2009	<1.0	<1.0	<1.0	<1.0	7.42
	12/09/2009	<1.0	<1.0	<1.0	<1.0	7.67
	03/18/2010	<1.0	<1.0	<1.0	<1.0	7.66
MW04	03/10/2009	<1.0	<1.0	<1.0	<1.0	7.11
	06/19/2009	<1.0	1.2	<1.0	<1.0	6.15
	09/23/2009	<1.0	<1.0	<1.0	<1.0	7.28
	12/09/2009	<1.0	<1.0	<1.0	<1.0	7.59
	03/18/2010	<1.0	<1.0	<1.0	<1.0	7.62
MW05	03/10/2009	<1.0	<1.0	<1.0	<1.0	7.37
	06/19/2009	<1.0	<1.0	<1.0	<1.0	5.60
	09/23/2009	<1.0	<1.0	<1.0	<1.0	7.23
	12/09/2009	<1.0	<1.0	<1.0	<1.0	7.55
	03/18/2010	<1.0	<1.0	<1.0	<1.0	7.59
MW06	04/24/2009	<1.0	<1.0	<1.0	<1.0	7.31
	06/19/2009	<1.0	1.5	<1.0	<1.0	7.18
	09/23/2009	<1.0	<1.0	<1.0	<1.0	8.04
	12/09/2009	<1.0	<1.0	<1.0	<1.0	9.27
	03/18/2010	<1.0	<1.0	<1.0	<1.0	8.26
Basic Standards for Groundwater:		5	560	700	1400	

Notes: < - less than ug/L - micrograms per Liter NA - Not Analyzed/Not Available
ft btoc - feet below top of casing NM - Not measured API - American Petroleum Institute
Basic Standards for Groundwater are taken from the Colorado Department of Health and Environment -
Water Quality Control Commission Regulation 41, effective 4/1/2009.
Bold numbers indicate result equaled or exceeded standard.





LEGEND

○ SITE LOCATION

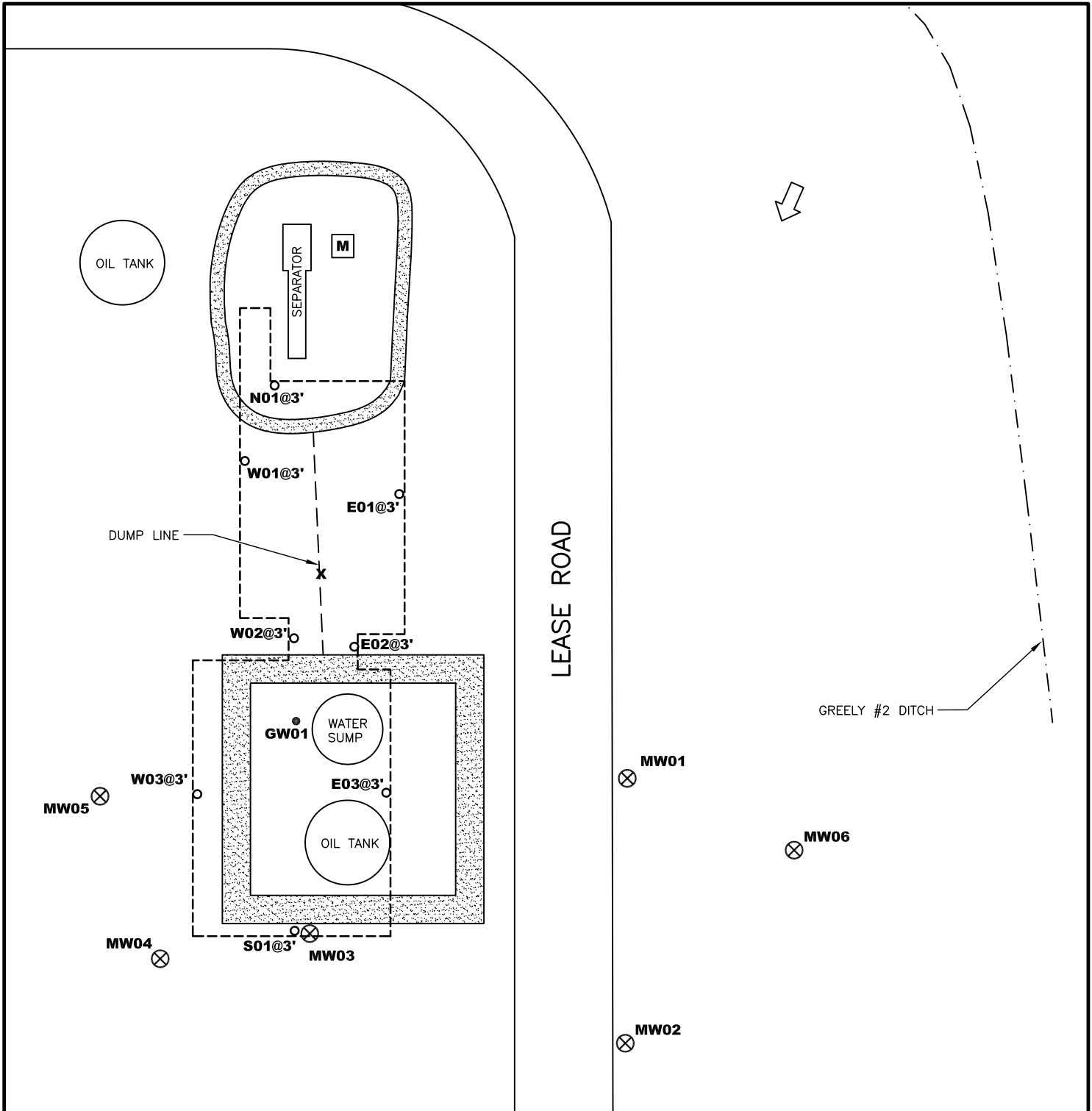


0 375 750 1500
FEET

FIGURE 1
 SITE LOCATION MAP
 EHRLICH 32-7
 SWNE 7-T6N-R64W
 WELD COUNTY, CO
 PETROLEUM DEVELOPMENT CORPORATION



SOURCE: TOPOZONE.COM
 USGS 7.5' QUADRANGLE
 (NAD27)



LEGEND

- MW01 ⊗ MONITORING WELL LOCATION
- N01@3' ○ SOIL SAMPLE LOCATION
- GW01 ● WATER SAMPLE LOCATION
- M METER HOUSE
- ▬ BERM
- X RELEASE LOCATION
- - - - - EXTENT OF EXCAVATION
- ➡ ESTIMATED GROUNDWATER FLOW DIRECTION

GREELY #2 DITCH

LEASE ROAD

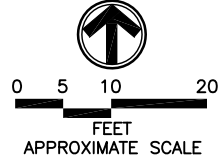


FIGURE 2
SITE MAP
EHRlich 32-7
SWNE 7-T6N-R64W
WELD COUNTY, CO
PETROLEUM DEVELOPMENT CORPORATION

