

T6S, R96W, 6th P.M.

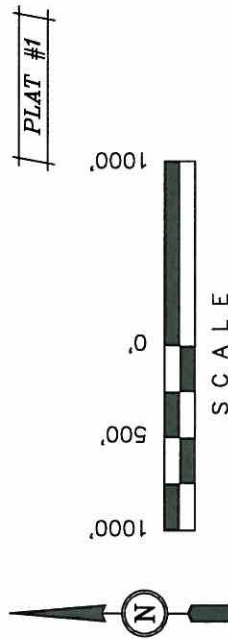
Well location, PUCKETT GM 514-32 (SURFACE LOCATION), located as shown in the NW 1/4 SE 1/4 of Section 31, T6S, R96W, 6th P.M., Garfield County, Colorado.

BASIS OF ELEVATION

SPOT ELEVATION AT THE NORTHWEST CORNER OF SECTION 30, T35, R95W, 6th P.M. TAKEN FROM THE FORKED GULCH QUADRANGLE, COLORADO, GARFIELD COUNTY, 7.5 MINUTE SERIES (TOPOGRAPHICAL MAP) PUBLISHED BY THE UNITED STATES DEPARTMENT OF THE INTERIOR, GEOLOGICAL SURVEY. SAID ELEVATION IS MARKED AS BEING 5966 FEET.

BASIS OF BEARINGS

BASIS OF BEARINGS IS A G.P.S. OBSERVATION.



CERTIFICATE

THIS IS TO CERTIFY THAT THE ABOVE PLAT WAS PREPARED AND
LOCATION AS SHOWN WAS STAKED ON THE GROUND FROM FIELD
NOTES OF ACTUAL SURVEYS MADE BY ME OR UNDER MY
SUPERVISION AND THAT THE SAME ARE TRUE AND CORRECT TO
THE BEST OF MY KNOWLEDGE AND BELIEF.

REGISTERED LAND SURVEYOR
REGISTRATION NO. 17492
STATE OF COLORADO

Q BOTTOM HOLE

1912 Brass Cap
11" High
Lat: 39.473206
Long: 108.132189

UTAH ENGINEERING & LAND SURVEYING

985 SOUTH 200 EAST - VERNAL, UTAH 84078

(435) 789-1017

SCALE

1

PROOF

END:

LEG

100

— = 90° SYMBOL

● = PROPOSED WELL HEAD.

▲ = SECTION CORNERS LOCATED.

$$N = 1610351.489$$

$$E = 2252806.725$$

ATED.

ERS LOC

N CORN

= SECTI

T6S, R96W, 6th P.M.

WILLIAMS PRODUCTION RMT COMPANY

Well location, PUCKETT GM 514-32 (TARGET BOTTOM HOLE), located as shown in Lot 9 of Section 32, T6S, R96W, 6th P.M., Garfield County, Colorado.

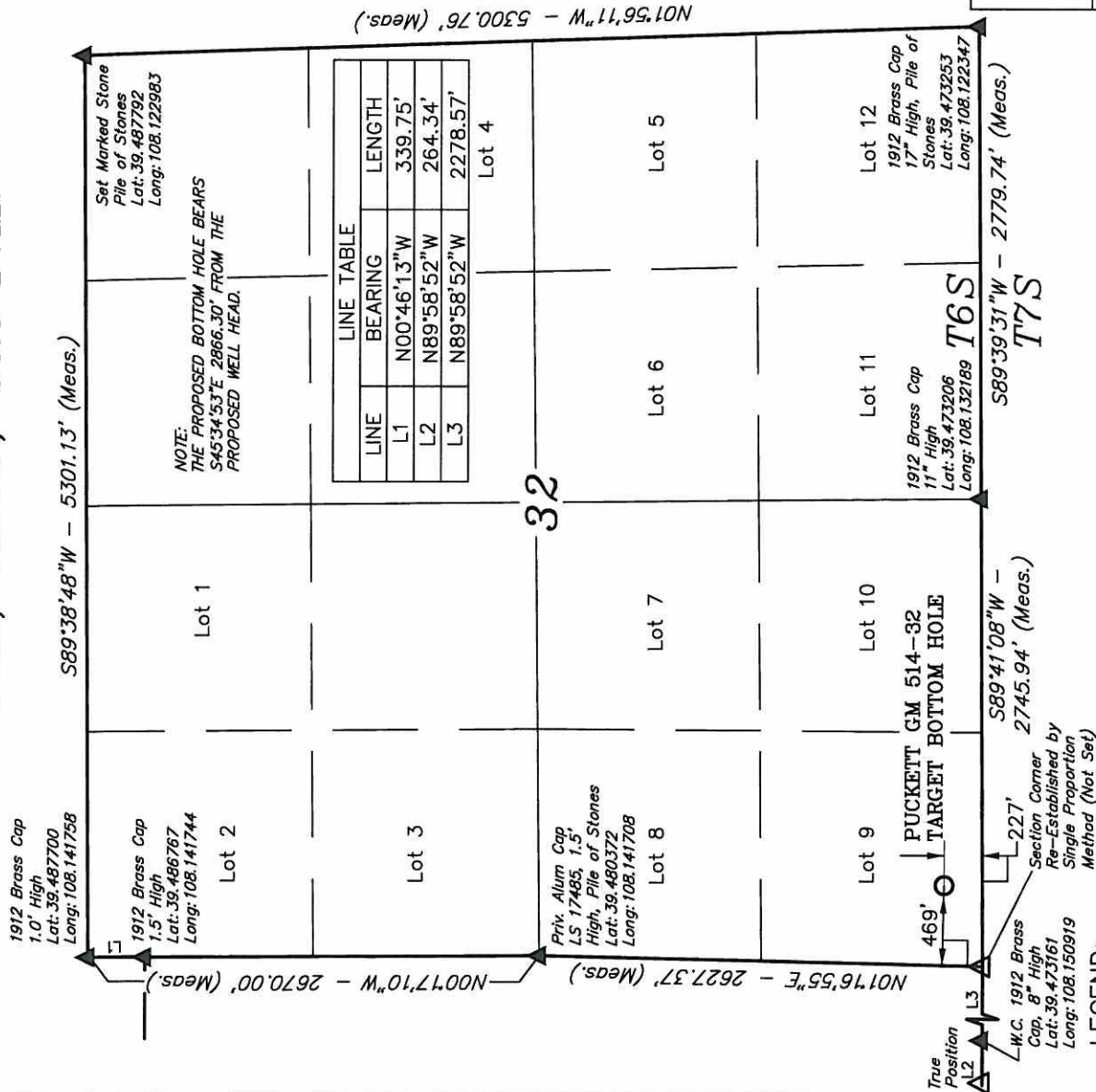
BASIS OF ELEVATION

SPOT ELEVATION AT THE NORTHWEST CORNER OF SECTION 30, T5S, R95W, 6th P.M. TAKEN FROM THE FORKED GULCH QUADRANGLE, COLORADO, GARFIELD COUNTY, 7.5 MINUTE SERIES (TOPOGRAPHICAL MAP) PUBLISHED BY THE UNITED STATES DEPARTMENT OF THE INTERIOR, GEOLOGICAL SURVEY. SAID ELEVATION IS MARKED AS BEING 5966 FEET.

BASIS OF BEARINGS

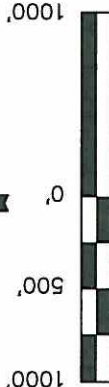
BASIS OF BEARINGS IS A G.P.S. OBSERVATION.

PLAT #1



THIS IS TO CERTIFY THAT THE ABOVE PLAT WAS PREPARED AND LOCATION AS SHOWN WAS STAKED ON THE GROUND FROM FIELD NOTES OF ACTUAL SURVEYS MADE BY ME OR UNDER MY SUPERVISION AND THAT THE SAME ARE TRUE AND CORRECT TO THE BEST OF MY KNOWLEDGE AND BELIEF.

CERTIFICATE



UNTAH ENGINEERING & LAND SURVEYING
85 SOUTH 200 EAST - VERNAL, UTAH 84078
(435) 789-1017

SCALE 1" = 1000'	DATE SURVEYED: 12-02-09	DATE DRAWN: 02-08-10
PARTY B.B. B.J. D.R.B.	REFERENCES G.L.O. PLAT	
WEATHER COOL	FILE	
WILLIAMS PRODUCTION RMT COMPANY		

NAD 83 (TARGET BOTTOM HOLE)
LATITUDE = 39°28'25.66" (39.473794)
LONGITUDE = 108°08'24.84" (108.140233)
STATE PLANE - (COLO. CENTRAL - NAD 83)
N = 1608288.100
E = 2254794.900

LEGEND:

- = 90° SYMBOL
- = PROPOSED WELL HEAD.
- ▲ = SECTION CORNERS LOCATED.