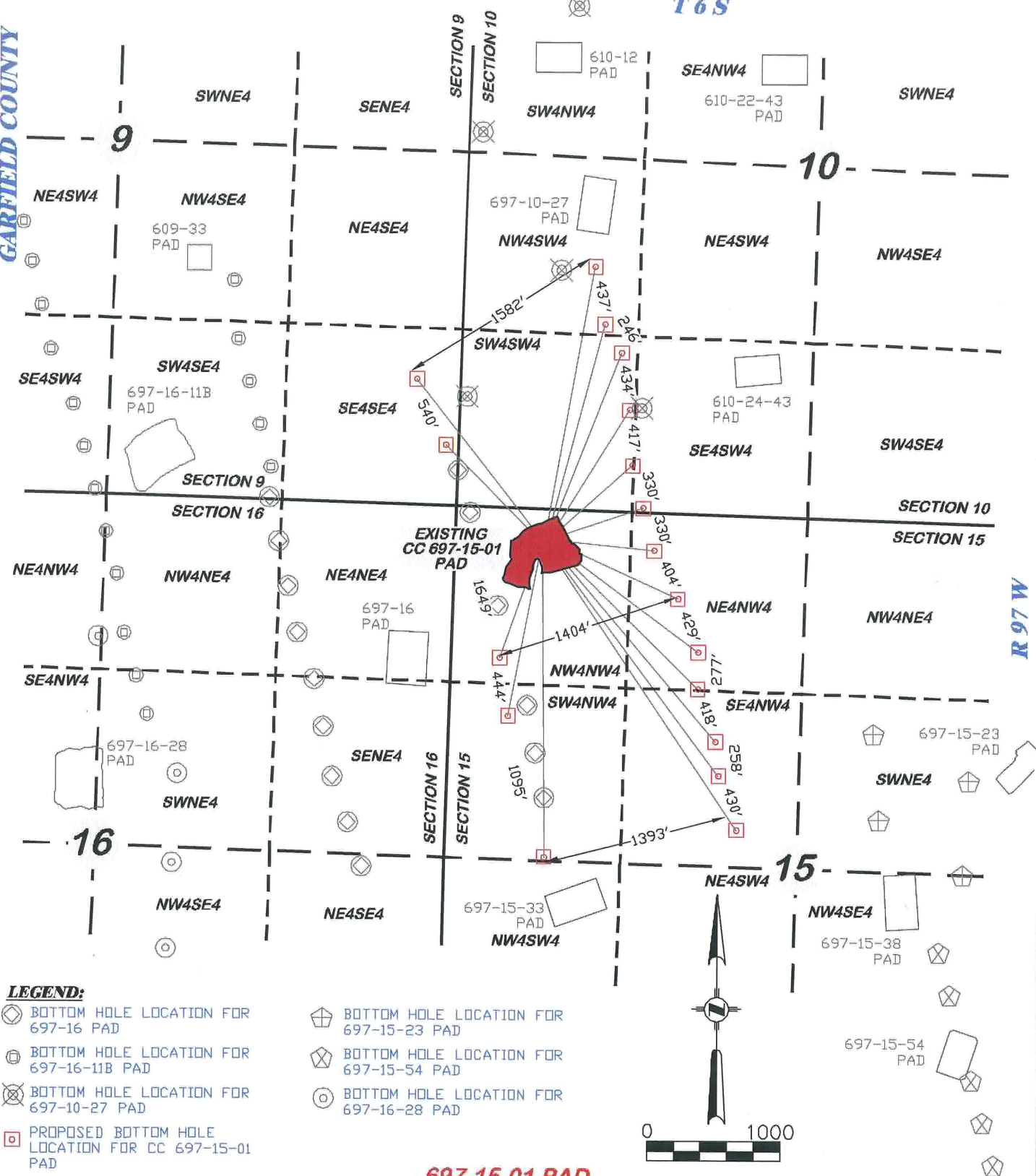


GARFIELD COUNTY

T 6 S

R 97 W



LEGEND:

- BOTTOM HOLE LOCATION FOR 697-16 PAD
- BOTTOM HOLE LOCATION FOR 697-16-11B PAD
- BOTTOM HOLE LOCATION FOR 697-10-27 PAD
- PROPOSED BOTTOM HOLE LOCATION FOR CC 697-15-01 PAD
- BOTTOM HOLE LOCATION FOR 697-15-23 PAD
- BOTTOM HOLE LOCATION FOR 697-15-54 PAD
- BOTTOM HOLE LOCATION FOR 697-16-28 PAD

697-15-01 PAD

DRG RIFFIN & ASSOCIATES, INC.
 (307) 382-5028 1414 ELK ST., ROCK SPRINGS, WY 82901

DRAWN: 2/16/2010 - DEH	SCALE: 1" = 1000'
REVISED: N/A	DRG JOB No. 10845
EXHIBIT 7	

MULTI-WELL PLAN

OXY USA WTP LP

**CC 697-09-56B, 64A, 697-10-50A, 50B, 58, 59, 42B, 42C,
 697-15-03A, 03B, 09B, 11A, 11B, 19A, 19B, 17A, 26, 28A,
 NWNW, SECTION 15, T. 6 S., R. 97 W., 6th P.M.,
 GARFIELD COUNTY, COLORADO**