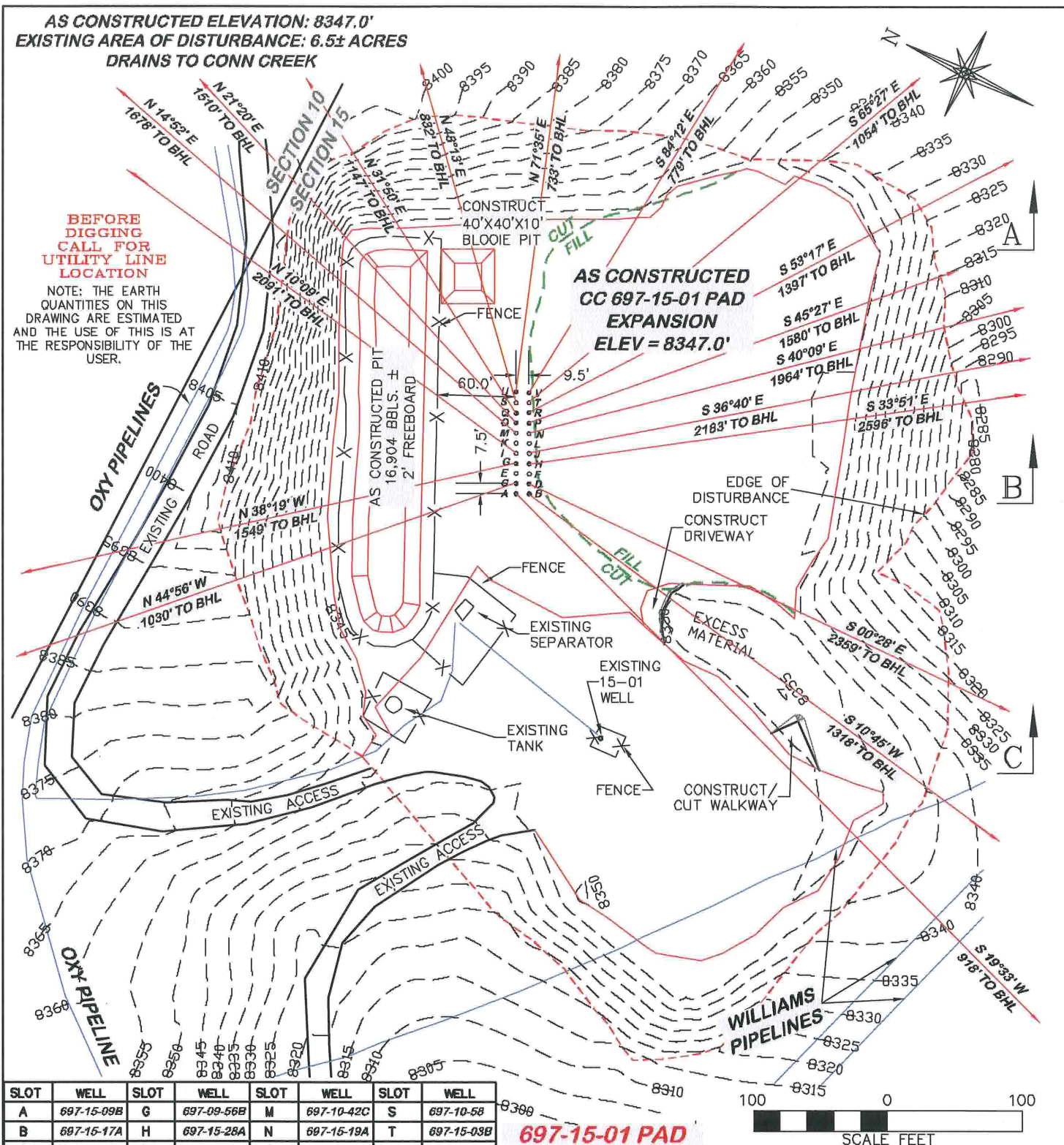


**AS CONSTRUCTED ELEVATION: 8347.0'**  
**EXISTING AREA OF DISTURBANCE: 6.5± ACRES**  
**DRAINS TO CONN CREEK**

**BEFORE  
DIGGING  
CALL FOR  
UTILITY LINE  
LOCATION**

NOTE: THE EARTH  
QUANTITIES ON THIS  
DRAWING ARE ESTIMATED  
AND THE USE OF THIS IS AT  
THE RESPONSIBILITY OF THE  
USER.



| SLOT | WELL       | SLOT | WELL       | SLOT | WELL       | SLOT | WELL       |
|------|------------|------|------------|------|------------|------|------------|
| A    | 697-15-09B | G    | 697-09-56B | M    | 697-10-42C | S    | 697-10-58  |
| B    | 697-15-17A | H    | 697-15-28A | N    | 697-15-19A | T    | 697-15-03B |
| C    | 697-09-64A | I    | 697-10-42B | O    | 697-10-50A | U    | 697-10-59  |
| D    | 697-15-26  | J    | 697-15-19B | P    | 697-15-11B | V    | 697-15-03A |
| E    | OPEN       | K    | OPEN       | Q    | 697-10-50B |      |            |
| F    | OPEN       | L    | OPEN       | R    | 697-15-11A |      |            |



**RIFFIN & ASSOCIATES, INC.**  
 1414 ELK ST., ROCK SPRINGS, WY 82901

(307) 362-5028

DRAWN: 2/16/2010 - DEH

SCALE: 1" = 100'

REVISED: N/A

DRG JOB No. 10845

EXHIBIT 2

**CONSTRUCTION LAYOUT DRAWING 1 OF 5**

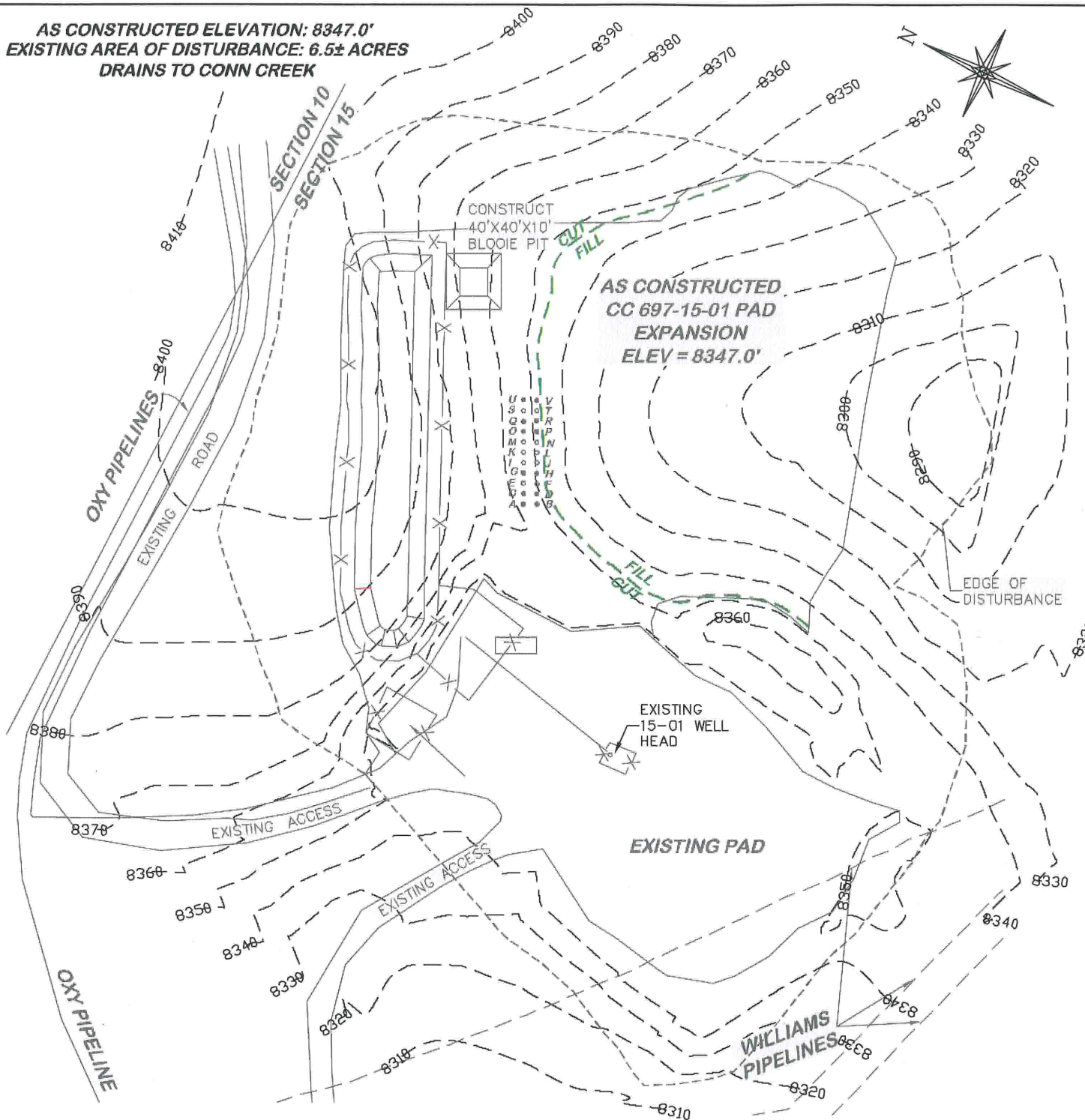
**OXY USA WTP LP**

**CC 697-09-56B, 64A, 697-10-50A, 50B, 58, 59, 42B, 42C,  
 697-15-03A, 03B, 09B, 11A, 11B, 19A, 19B, 17A, 26, 28A,  
 NWNW, SECTION 15, T. 6 S., R. 97 W., 6th P.M.,  
 GARFIELD COUNTY, COLORADO**

**ESTIMATED EARTHWORK**

| ITEM   | CUT    | FILL   | TOPSOIL | EXCESS |
|--------|--------|--------|---------|--------|
| PAD    | EXISTS | EXISTS | EXISTS  | EXISTS |
| PIT    | EXISTS | EXISTS | EXISTS  | EXISTS |
| TOTALS | EXISTS | EXISTS | EXISTS  | EXISTS |

AS CONSTRUCTED ELEVATION: 8347.0'  
 EXISTING AREA OF DISTURBANCE: 6.5± ACRES  
 DRAINS TO CONN CREEK



**PRE CONSTRUCTION  
 CONTOURS**

**697-15-01 PAD**



**RIFFIN & ASSOCIATES, INC.**  
 1414 ELK ST., ROCK SPRINGS, WY 82901

(307) 362-5028

DRAWN: 2/16/2010 - DEH

SCALE: 1" = 100'

REVISED: N/A

DRG JOB No. 10845

EXHIBIT 2B

**CONSTRUCTION LAYOUT DRAWING 3 OF 5**

**PRECONSTRUCTION CONTOURS**

**OXY USA WTP LP**

**CC 697-09-56B, 64A, 697-10-50A, 50B, 58, 59, 42B, 42C,  
 697-15-03A, 03B, 09B, 11A, 11B, 19A, 19B, 17A, 26, 28A,  
 NWNW, SECTION 15, T. 6 S., R. 97 W., 6th P.M.,  
 GARFIELD COUNTY, COLORADO**