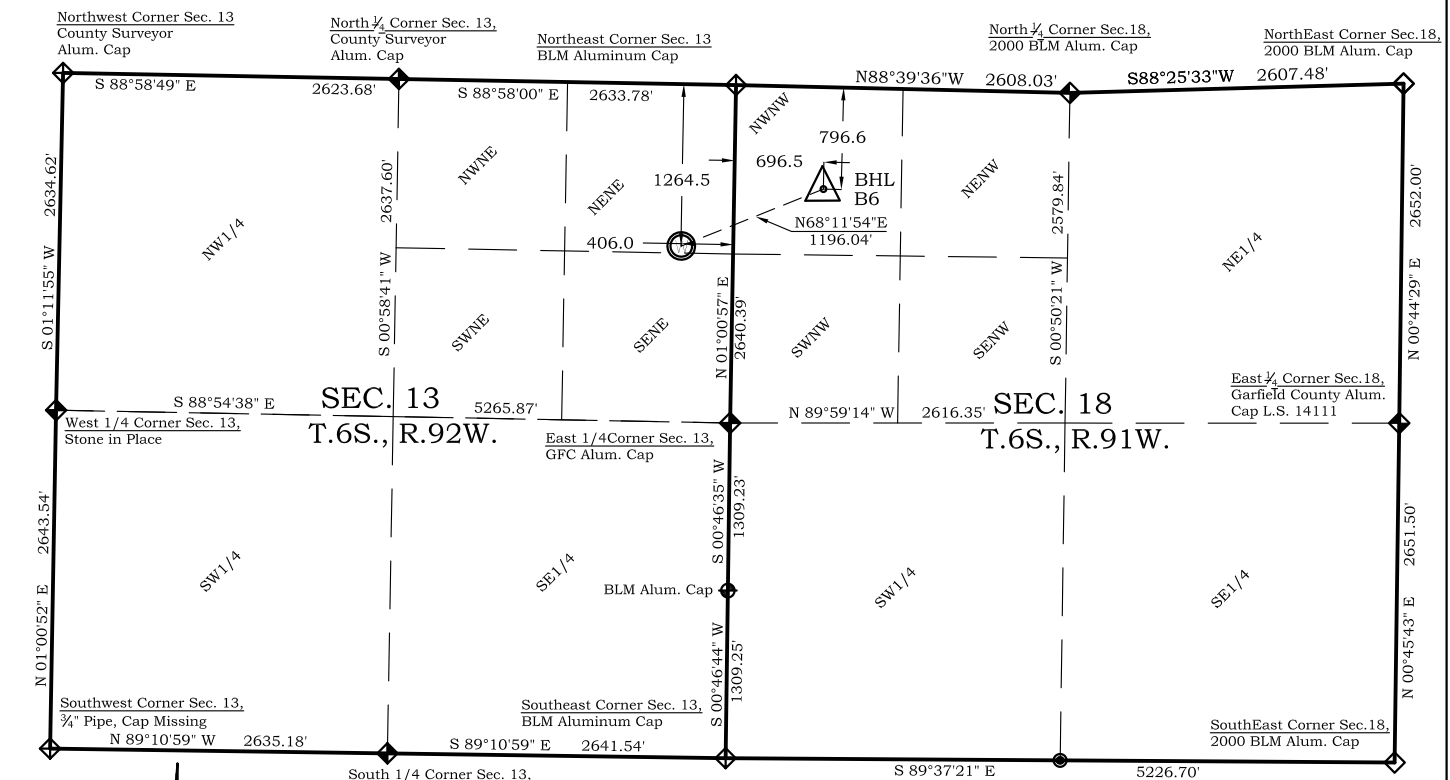






Section 13, Township 6 South, Range 92 West



-  - Field Surveyed Section Corner
-  - Field Surveyed Quarter Corner
-  - Calculated Section Corner Location
-  - Field Surveyed $\frac{1}{16}$ Corner

<p>797' FNL 697' FWL NAD83 Lat: 39.532305615°N Long: 107.603998986°W</p>	<p>NAD27 Lat: 39.532325001°N Long: 107.603386000°W</p>
---	---

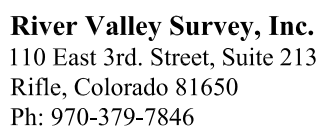
1265' FNL
406' FEL
Gnd El= 5600.2
Pad El= 5597.8
NAD83
Lat: 39.530998649°N
Long: 107.607887868°W
NAD27
Lat: 39.531018039°N
Long: 107.607274755°W
UTM 13 NORTH
NAD 1983
NORTHING
14366614.159
EASTING
905054.486

**Proposed McLin B6 Well Situate in The NE $\frac{1}{4}$ NE $\frac{1}{4}$ Section
13, Township 6 South, Range 92 West of the 6 th. Principal
Meridian, County of Garfield, State of Colorado**

I, SCOTT E. AIBNER, A REGISTERED LAND SURVEYOR, LICENSED UNDER THE LAWS OF THE STATE OF COLORADO DO HEREBY CERTIFY THAT THE SURVEY SHOWN HEREON WAS PREPARED BY RIVER VALLEY SURVEY, INC., FOR ANTERO RESOURCES, BY ME OR UNDER MY DIRECT SUPERVISION AND THAT THIS PLAT IS A TRUE REPRESENTATION THEREOF.

BANNER, A REGISTERED LAND SURVEYOR, LICENSED
STATE OF COLORADO DO HEREBY CERTIFY THAT THE SURVEY
PREPARED BY RIVER VALLEY SURVEY, INC., FOR A
BY ME OR UNDER MY DIRECT SUPERVISION AND PRESEN-
TATION THEREOF.

1. LATITUDE AND LONGITUDE COORDINATES ARE DIFFERENTIALLY CORRECTED AND BASED ON PUBLISHED NGS CONTROL STATION "WDP-5". SYSTEM: UTM ZONE: 13 NORTH DATUM: NAD 1983 (CONUS)
2. ELEVATIONS ARE BASED ON NAVD OF 1983.
3. ALL BOTTOM AND TOP HOLE LOCATIONS ARE MEASURED 90 DEGREES FROM SECTION LINE.
4. USGS QUADRANGLE MAP "SILT".
5. CURRENT SURFACE LAND USE: HAY FIELD.
6. PDOP AT THE TIME OF LOCATION OF SURFACE WELL = 2.4



Sheet: 1 of 9

Situate In:
NE $\frac{1}{4}$ Section 13, T6S., R. 92 W. of the
6th P.M., Garfield County, Colorado

