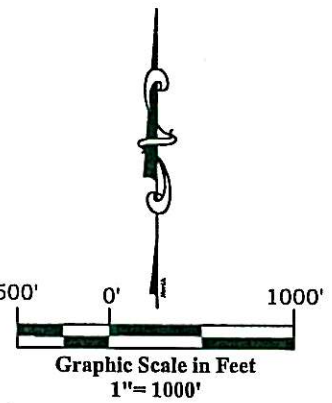
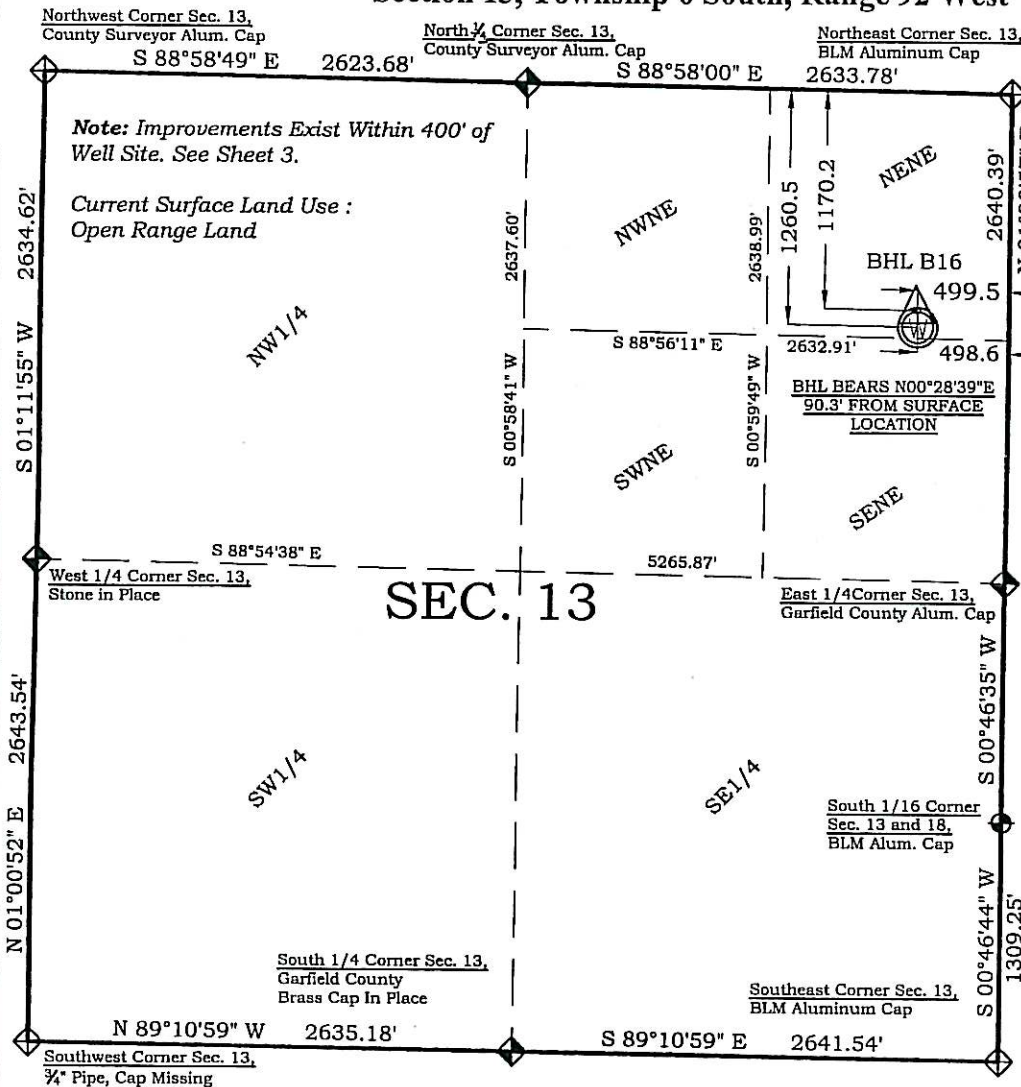


Well Location Plat McLin B16

Section 13, Township 6 South, Range 92 West



Legend

- ◆ - Field Surveyed Section Corner
- ◆ - Field Surveyed Quarter Corner
- ⊙ - Calculated Section Corner Location
- ⊕ - Field Surveyed 1/4 Corner

Surface: McLin B16

1261' FNL
499' FEL
Gnd El= 5597.0
Pad El= 5597.8
NAD83
Lat: 39.531006796°N
Long: 107.608216517°W
NAD27
Lat: 39.531026186°N
Long: 107.607603391°W
UTM 13 NORTH
NAD 1983
NORTHING
14366619.813
EASTING
904961.889

Bottom Hole: McLin B16

1170' FNL
500' FEL
NAD83
Lat: 39.531254610°N
Long: 107.608223129°W
NAD27
Lat: 39.531274001°N
Long: 107.607610000°W

Prepared For Antero Resources

Proposed McLin B16 Well Situate in The NE 1/4 NE 1/4 Section 13, Township 6 South, Range 92 West of the 6 th. Principal Meridian, County of Garfield, State of Colorado

SURVEYOR'S CERTIFICATE

I, SCOTT E. AIBNER, A REGISTERED LAND SURVEYOR, LICENSED UNDER THE LAWS OF THE STATE OF COLORADO DO HEREBY CERTIFY THAT THE SURVEY SHOWN HEREON WAS PREPARED BY RIVER VALLEY SURVEY, INC., FOR ANTERO RESOURCES, BY ME OR UNDER MY DIRECT SUPERVISION AND THAT THIS PLAT IS A TRUE REPRESENTATION THEREOF.

[Signature]
31143
PROFESSIONAL LAND SURVEYOR

BY: SCOTT E. AIBNER, COLORADO REG. NO. 31143

Notes:

1. LATITUDE AND LONGITUDE COORDINATES ARE DIFFERENTIALLY CORRECTED AND BASED ON PUBLISHED NGS CONTROL STATION "WDP-5". SYSTEM: UTM ZONE: 13 NORTH DATUM: NAD 1983 (CONUS)
2. ELEVATIONS ARE BASED ON NAVD OF 1983.
3. ALL BOTTOM AND TOP HOLE LOCATIONS ARE MEASURED 90 DEGREES FROM SECTION LINE.
4. USGS QUADRANGLE MAP "SIL".
5. CURRENT SURFACE LAND USE: HAY FIELD.
6. PDOP AT THE TIME OF LOCATION OF SURFACE WELL = 2.4



River Valley Survey, Inc.
110 East 3rd. Street, Suite 213
Rifle, Colorado 81650
Ph: 970-379-7846

Project: McLin B PAD

Field Date: 01-19-10

Date: 02-27-10

Scale: 1"= 1000'

Sheet: 1 of 9

Well Location Plat
Prepared For Antero Resources

Situate In:
NE 1/4 Section 13, T6S., R. 92 W. of the
6th P.M., Garfield County, Colorado

