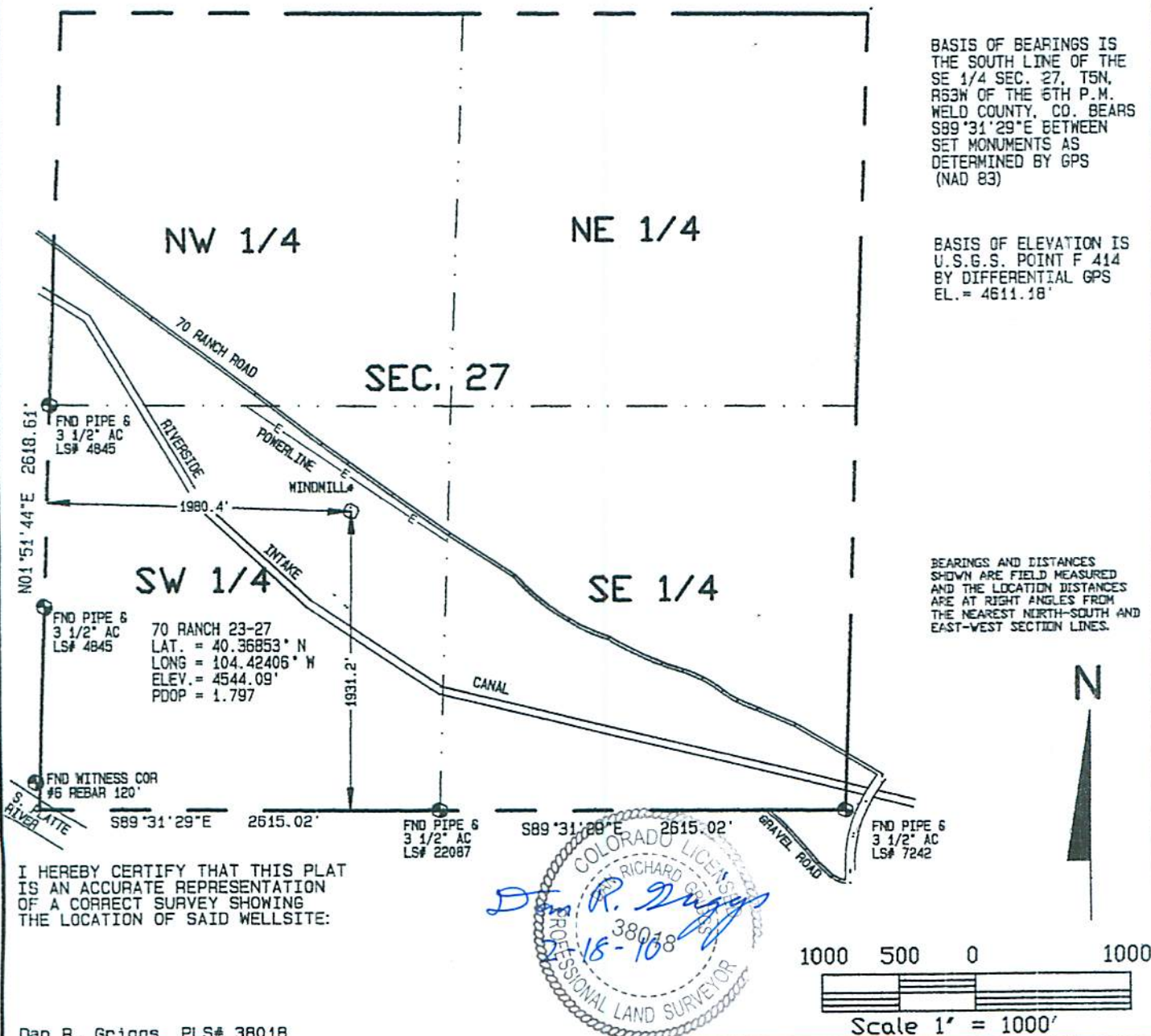


Contract Surveyors, Ltd. of Denver, Colorado has in accordance with a request from Steve Wolfe for Bonanza Creek Energy Operating Company, LLC, determined the location of 70 Ranch 23-27 to be 1931' FSL & 1980' FWL Section 27, Township 5 North, Range 63 West of the 6th Principal Meridian, Weld County, State of Colorado. The surface elevation at this point is 4534 feet above m.s.l. A windmill & tank are 150' north, a powerline is 183' NE, and the road is 235' NE of the location.



**CONTRACT SURVEYORS, LTD.**  
COMPLETE SURVEYING AND GLOBAL POSITIONING

2133 SOUTH BELLAIRE STREET #14  
DENVER COLORADO 80222  
(303) 756-3595



CSL# 10104-04

DATE OF FIELD WORK

16 FEBRUARY, 2010

DATE OF DRAWING

18 FEBRUARY, 2010

70 RANCH 23-27

NESW SEC. 27, T5N, R63W

BONANZA CREEK ENERGY OPERATING COMPANY, LLC

WELD COUNTY, COLORADO