

EOG RESOURCES, INC.
CRITTER CREEK #17-21H
LOCATED IN WELD COUNTY, COLORADO
SECTION 21, T11N, R63W, 6th P.M.



PHOTO: VIEW FROM CORNER #5 TO LOCATION STAKE

CAMERA ANGLE: SOUTHERLY

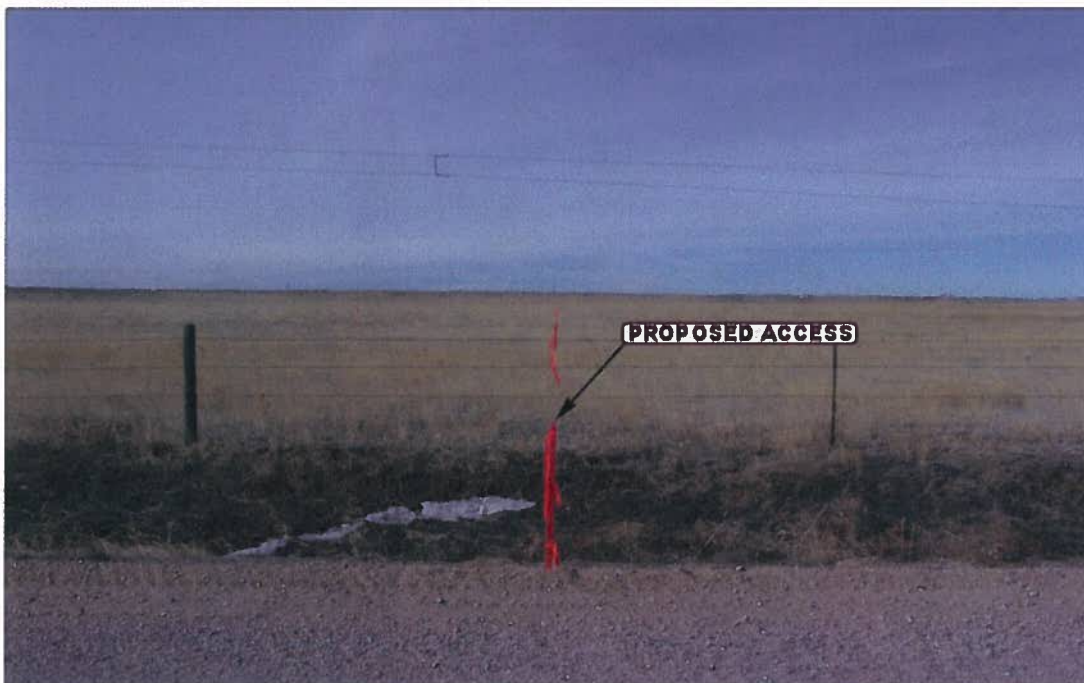


PHOTO: VIEW FROM BEGINNING OF PROPOSED ACCESS

CAMERA ANGLE: WESTERLY



- Since 1964 -



Uintah Engineering & Land Surveying
85 South 200 East Vernal, Utah 84078
435-789-1017 FAX (435) 789-1813

LOCATION PHOTOS

02 17 10
MONTH DAY YEAR

PHOTO
P1

TAKEN BY: B.H. DRAWN BY: Z.L. REVISED: 00-00-00

EOG RESOURCES, INC.

CRITTER CREEK #17-21H

LOCATED IN WELD COUNTY, COLORADO

SECTION 21, T11N, R63W, 6th P.M.

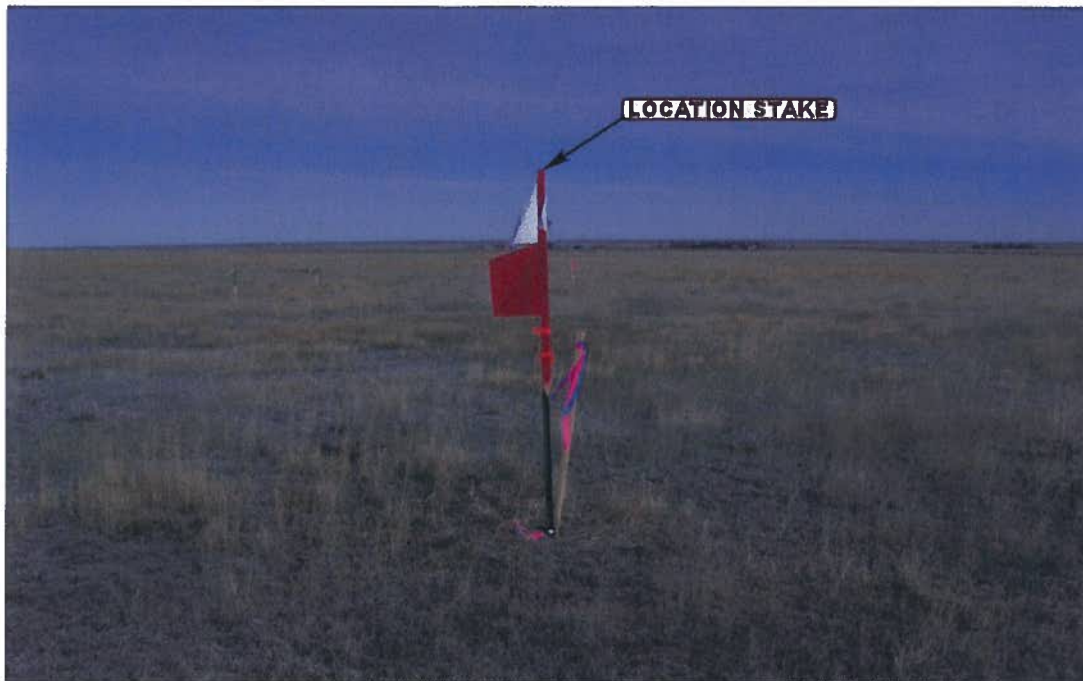


PHOTO: VIEW OF LOCATION STAKE

CAMERA ANGLE: NORTHERLY



PHOTO: VIEW OF LOCATION STAKE

CAMERA ANGLE: EASTERLY



- Since 1964 -



Uintah Engineering & Land Surveying

85 South 200 East Vernal, Utah 84078
435-789-1017 FAX (435) 789-1813

LOCATION PHOTOS

02 17 10
MONTH DAY YEAR

TAKEN BY: B.H.

DRAWN BY: Z.L.

REVISED: 00-00-00

PHOTO
P2

EOG RESOURCES, INC.

CRITTER CREEK #17-21H

LOCATED IN WELD COUNTY, COLORADO

SECTION 21, T11N, R63W, 6th P.M.



PHOTO: VIEW OF LOCATION STAKE

CAMERA ANGLE: SOUTHERLY



PHOTO: VIEW OF LOCATION STAKE

CAMERA ANGLE: WESTERLY



- Since 1964 -

UELS

Uintah Engineering & Land Surveying
85 South 200 East Vernal, Utah 84078
435-789-1017 FAX (435) 789-1813

LOCATION PHOTOS

02 17 10
MONTH DAY YEAR

**PHOTO
P3**

TAKEN BY: B.H.

DRAWN BY: Z.L.

REVISED: 00-00-00