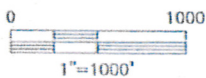
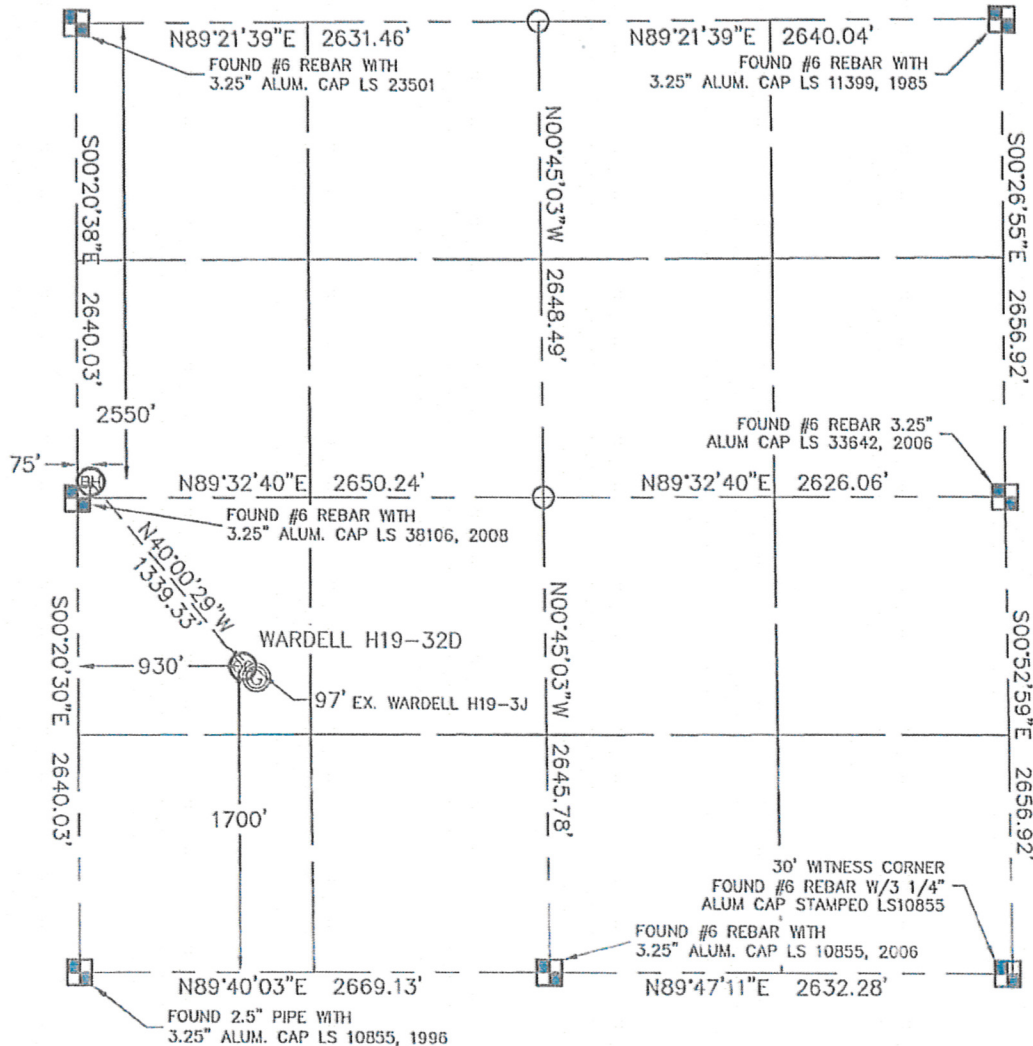


KING SURVEYORS, INC. 650 E. GARDEN DR. WINDSOR, CO 80550

WELL LOCATION CERTIFICATE

THIS MAP DOES NOT REPRESENT A BOUNDARY SURVEY

SECTION: 19
TOWNSHIP: 3N
RANGE: 65W



In accordance with a request from Erik Van Dacar with Noble Energy Inc.

King Surveyors Inc. has determined the surface location of the WARDELL H19-32D to be 1700' from the SOUTH line and 930' from the WEST line and the bottom hole to be 2550' from the NORTH line and 75' from the WEST line as measured at right angles from the section lines of Section 19, Township 3 North, Range 65 West of the Sixth Principal Meridian, County of Weld, State of Colorado.

I hereby state that this Well Location Certificate was prepared by me, or under my direct supervision, that the fieldwork was completed on 11-19-09, for and on behalf of Noble Energy Inc. That this is not a Land Survey Plot or an Improvement Survey Plot, and that it is not to be relied upon for establishment of fence, building, or other future improvement lines.

NOTE:

- 1) Bearings shown are Grid Bearings of the Colorado State Plane Coordinate System, North Zone, North American Datum 1983/2007. The lineal dimensions as contained herein are based upon the "U.S. Survey Foot."
- 2) Ground elevations are based on an observed GPS elevation (NAVD 1988 DATUM).
- 3) NEAREST EXISTING WELL: WARDELL H19-3J 97' SOUTHEAST
- 4) IMPROVEMENTS: See VISIBLE IMPROVEMENTS exhibit for all visible improvements within 400' of well head.
- 5) SURFACE USE: PASTURE, EX. WELL SITE

NOTE

According to Colorado law, you must commence any legal action based upon any defect in this W.L.C. within three years after you discover such defect. In no event, may any action based upon any defect in this survey be commenced more than ten years after the date of the certificate shown hereon. (13-80-105 C.R.S.)

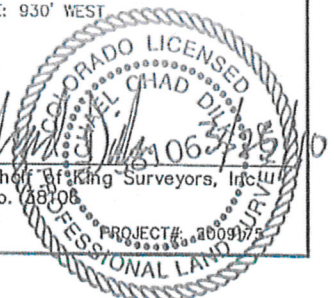
LEGEND

- = ALIQUOT MONUMENT AS DESCRIBED
- = CALCULATED POSITION

SURFACE LOCATION
LATITUDE: 40.20832N
LONGITUDE: 104.71241W
PDOP: 1.1
ELEV: 4990
1/4, 1/4: NW1/4SW1/4
NEAREST PROPERTY LINE: 930' WEST

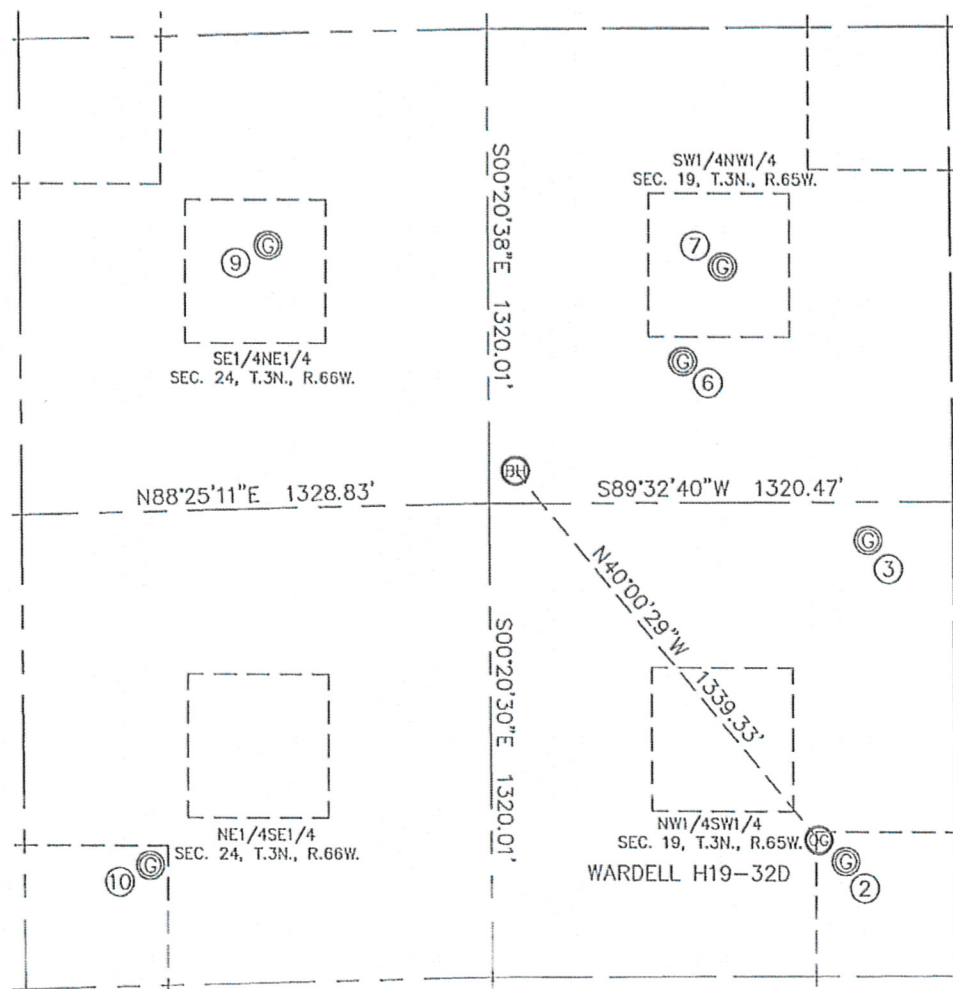
BOTTOM HOLE
LATITUDE: 40.21116N
LONGITUDE: 104.71546W

Michael Chad Dilka—On behalf of King Surveyors, Inc.
Licensed Land Surveyor No. 288106
State of Colorado



KING SURVEYORS, INC. 650 E. GARDEN DR. WINDSOR, CO 80550
SITE SKETCH

SECTION: 19
 TOWNSHIP: 3N
 RANGE: 65W



②	③	⑥	⑦	⑨	⑩
WARDELL H19-3J	WARDELL H19-20	WFL H19-5J	PLUGGED WELL	HSR-WALSH B-24	HSR-LONNY JOSEPH 9-24
NW1/4SW1/4	NW1/4SW1/4	SW1/4NW1/4	SW1/4NW1/4	SE1/4NE1/4	NE1/4SE1/4
1640' FSL	2535' FSL	2249' FNL	1986' FNL	1909' FNL	1657' FSL
1007' FWL	1078' FWL	555' FWL	669' FWL	628' FEL	974' FEL
LAT-40.20816°N	LAT-40.21062°N	LAT-40.21199°N	LAT-40.21271°N	LAT-40.21289°N	LAT-40.20816°N
LONG-104.71214°W	LONG-104.71187°W	LONG-104.71374°W	LONG-104.71333°W	LONG-104.71797°W	LONG-104.71922°W
PDOP: 1.7	PDOP: 1.5	PDOP: 1.1	PDOP: 1.2	PDOP: 1.6	PDOP: 1.5
ELEV: 4990	ELEV: 4984	ELEV: 5004	ELEV: 5000	ELEV: 5018	ELEV: 5029

