

ENSIGN

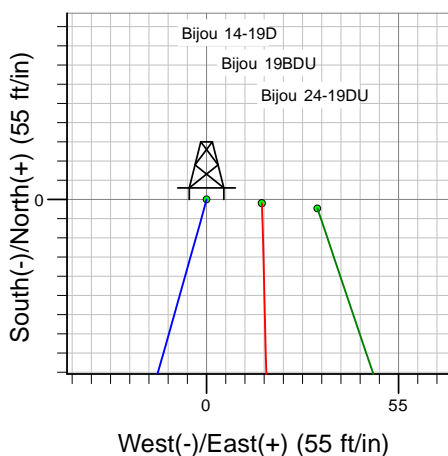
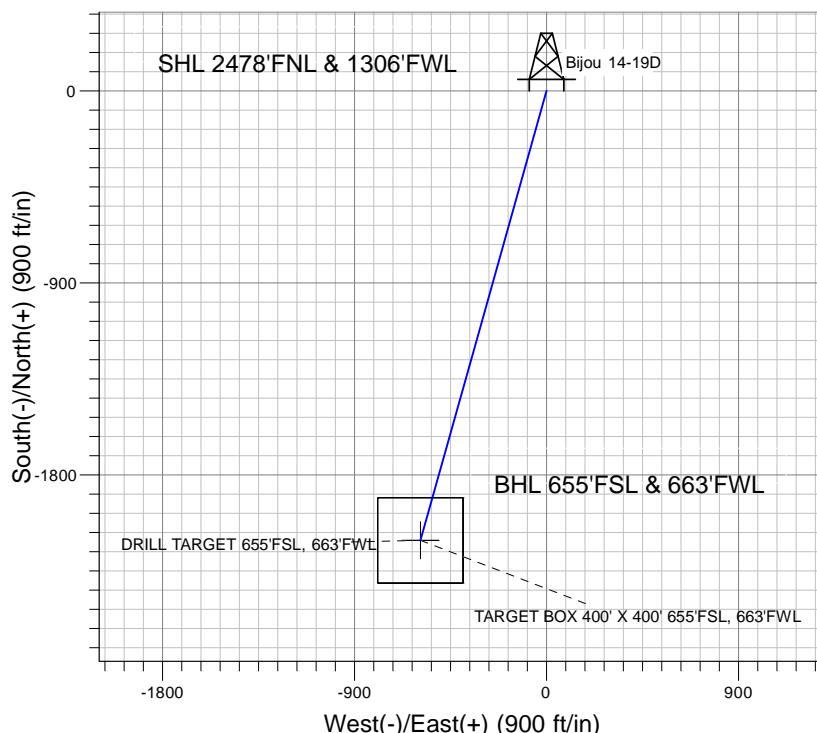
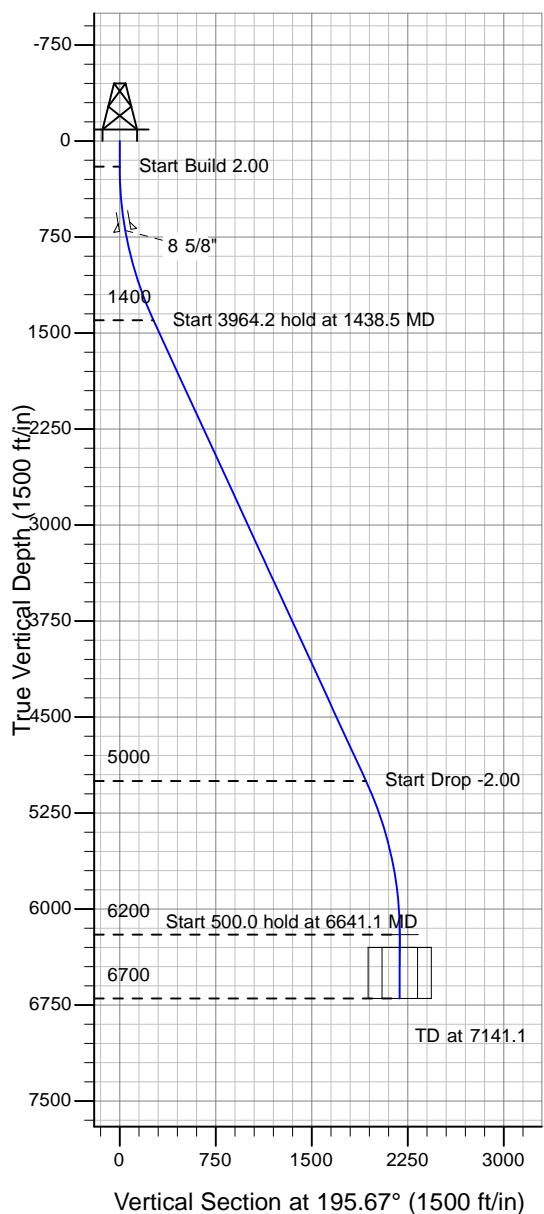
Directional

Well Name: Bijou 14-19D

Surface Location: Bijou Pad Sec.19-T5N-R63W
 North American Datum 1983 , US State Plane 1983 , Colorado Northern Zone
 Ground Elevation: 4555.0

+N/-S+E/-W Northing Easting Latitude Longitude Slot
 0.0 0.0 1384775.86 3282979.37 40° 23' 6.583 N 104° 29' 2.954 W
 Original Well Elev WELL @ 4568.0ft (Original Well Elev)

PETROLEUM DEVELOPMENT CORP Weld County CO



Bijou Pad Sec.19-T5N-R63W
 Bijou 14-19D
 Plan #2 (3-25-10)
 14:16, March 25 2010



Azimuths to True North
 Magnetic North: 8.87°
 Magnetic Field
 Strength: 53328.4nT
 Dip Angle: 67.14°
 Date: 12/31/2009
 Model: IGRF200510

WELLBORE TARGET DETAILS (LAT/LONG)

Name	TVD	+N/-S	+E/-W	Latitude	Longitude	Shape
DRILL TARGET 655'FSL, 663'FWL	6200.0	-2106.7	-591.0	40° 22' 45.766 N	104° 29' 10.591 W	Point
TARGET BOX 400' X 400' 655'FSL, 663'FWL	6300.0	-2106.7	-591.0	40° 22' 45.765 N	104° 29' 10.591 W	Rectangle (Sides: L400.0 W400.0)

SECTION DETAILS

Sec	MD	Inc	Azi	TVD	+N/-S	+E/-W	DLeg	TFace	VSec	Target
1	0.0	0.00	0.00	0.0	0.0	0.0	0.00	0.00	0.0	
2	200.0	0.00	0.00	200.0	0.0	0.0	0.00	0.00	0.0	
3	1438.5	24.77	195.67	1400.3	-253.8	-71.2	2.00	195.67	263.6	
4	5402.7	24.77	195.67	4999.7	-1852.9	-519.8	0.00	0.00	1924.4	
5	6641.1	0.00	0.00	6200.0	-2106.7	-591.0	2.00	180.00	2188.0	DRILL TARGET 655'FSL, 663'FWL
6	7141.1	0.00	0.00	6700.0	-2106.7	-591.0	0.00	0.00	2188.0	