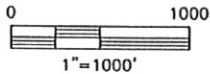
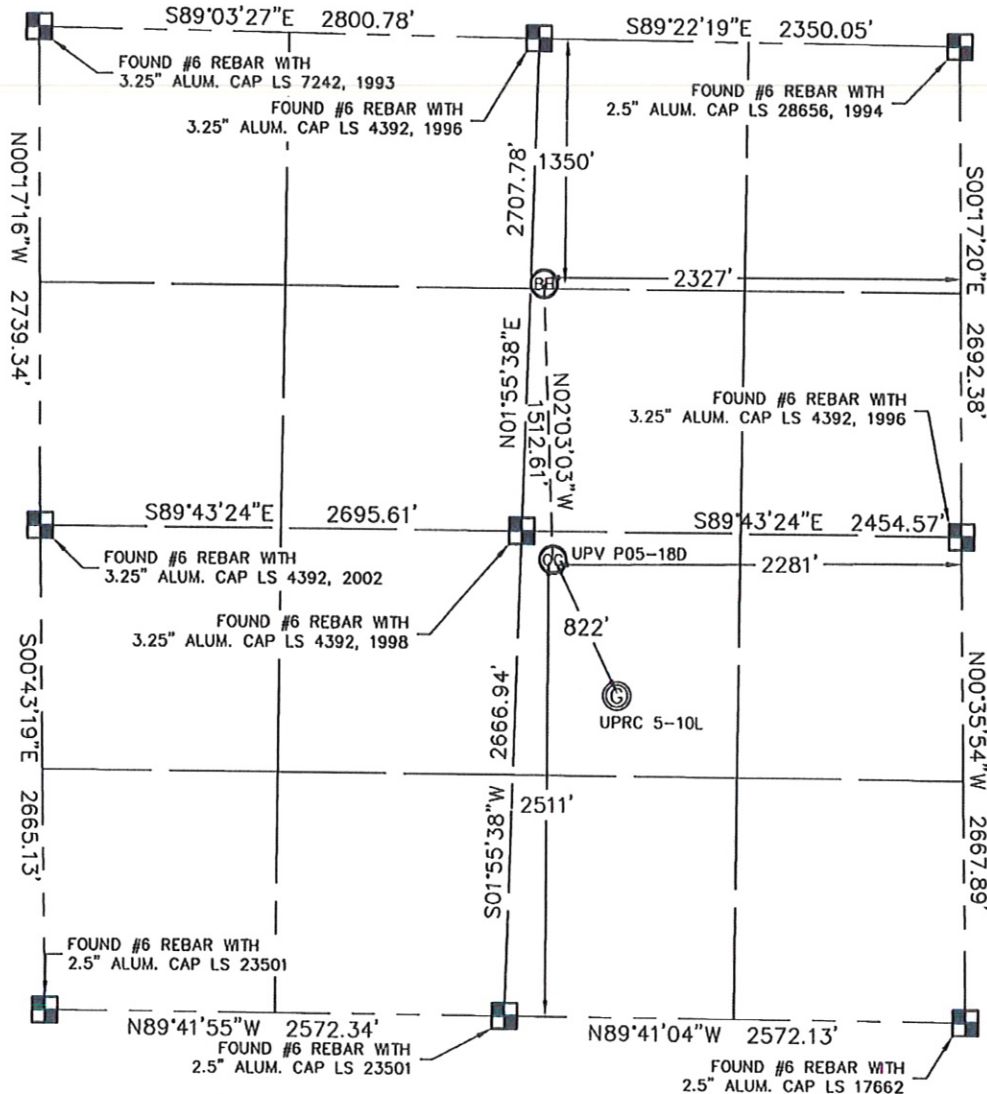


WELL LOCATION CERTIFICATE

THIS MAP DOES NOT REPRESENT A BOUNDARY SURVEY

SECTION: 5
TOWNSHIP: 3N
RANGE: 67W

In accordance with a request from Joe Martin with Noble Energy Inc., King Surveyors Inc. has determined the surface location of the UPV P05-18D to be 2511' from the SOUTH line and 2281' from the EAST line and the bottom hole to be 1350' from the NORTH line and 2327' from the EAST line as measured at right angles from the section line of Section 5, Township 3 North, Range 67 West of the Sixth Principal Meridian, County of Weld, State of Colorado.

I hereby state that this Well Location Certificate was prepared by me, or under my direct supervision, that the fieldwork was completed on 8-27-09, for and on behalf of Noble Energy Inc.. That this is not a Land Survey Plot or an Improvement Survey Plot, and that it is not to be relied upon for establishment of fence, building, or other future improvement lines.

NOTE:

- 1) Bearings shown are Grid Bearings of the Colorado State Plane Coordinate System, North Zone, North American Datum 1983/2007. The lineal dimensions as contained herein are based upon the "U.S. Survey Foot."
- 2) Ground elevations are based on an observed GPS elevation (NAVD 1988 DATUM).
- 3) NEAREST EXISTING WELL: UPRC 5-10L 822' SOUTHEAST
- 4) IMPROVEMENTS: See VISIBLE IMPROVEMENTS exhibit for all visible improvements within 400' of well head.
- 5) SURFACE USE: CROP FIELD

SURFACE LOCATION
LATITUDE: 40.25456°N
LONGITUDE: 104.91305°W
PDOP: 2.1
ELEV: 4875
1/4, 1/4: NW1/4SE1/4
NEAREST PROPERTY LINE: 155' NORTH

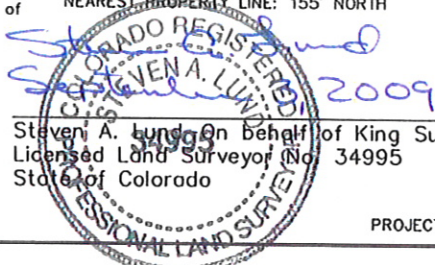
BOTTOM HOLE
LATITUDE: 40.25871°N
LONGITUDE: 104.91321°W

NOTE

According to Colorado law, you must commence any legal action based upon any defect in this W.L.C. within three years after you discover such defect. In no event, may any action based upon any defect in this survey be commenced more than ten years after the date of the certificate shown hereon. (13-80-105 C.R.S.)

LEGEND

- = ALIQUOT MONUMENT AS DESCRIBED
 = CALCULATED POSITION

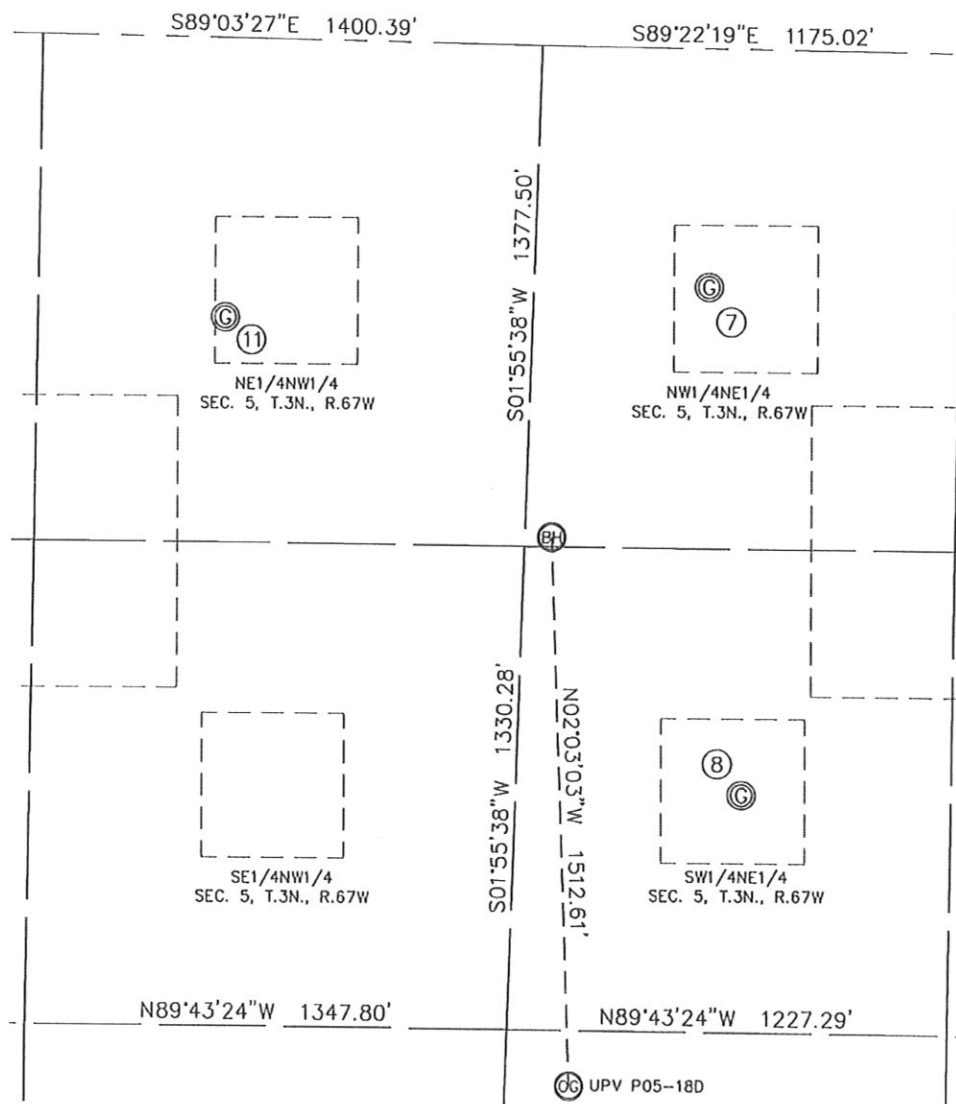


Steven A. Lundgren on behalf of King Surveyors, Inc.
Licensed Land Surveyor (No. 34995)
State of Colorado

PROJECT#: 2009289

KING SURVEYORS, INC. 650 E. GARDEN DR. WINDSOR, CO 80550
SITE SKETCH

SECTION: 5
 TOWNSHIP: 3N
 RANGE: 67W



⑦
 UPV 5-2J7
 NW1/4NE1/4
 655' FNL
 1884' FEL
 LAT-40.26060°N
 LONG-104.91162°W
 PDOP: 1.6
 ELEV: 4913

⑧
 UPV 5-7J7
 SW1/4NE1/4
 2048' FNL
 1794' FEL
 LAT-40.25677°N
 LONG-104.91132°W
 PDOP: 1.2
 ELEV: 4887

⑪
 SORENSON 3-5
 NE1/4NW1/4
 768' FNL
 1909' FWL
 LAT-40.26037°N
 LONG-104.91648°W
 PDOP: 1.1
 ELEV: 4911

