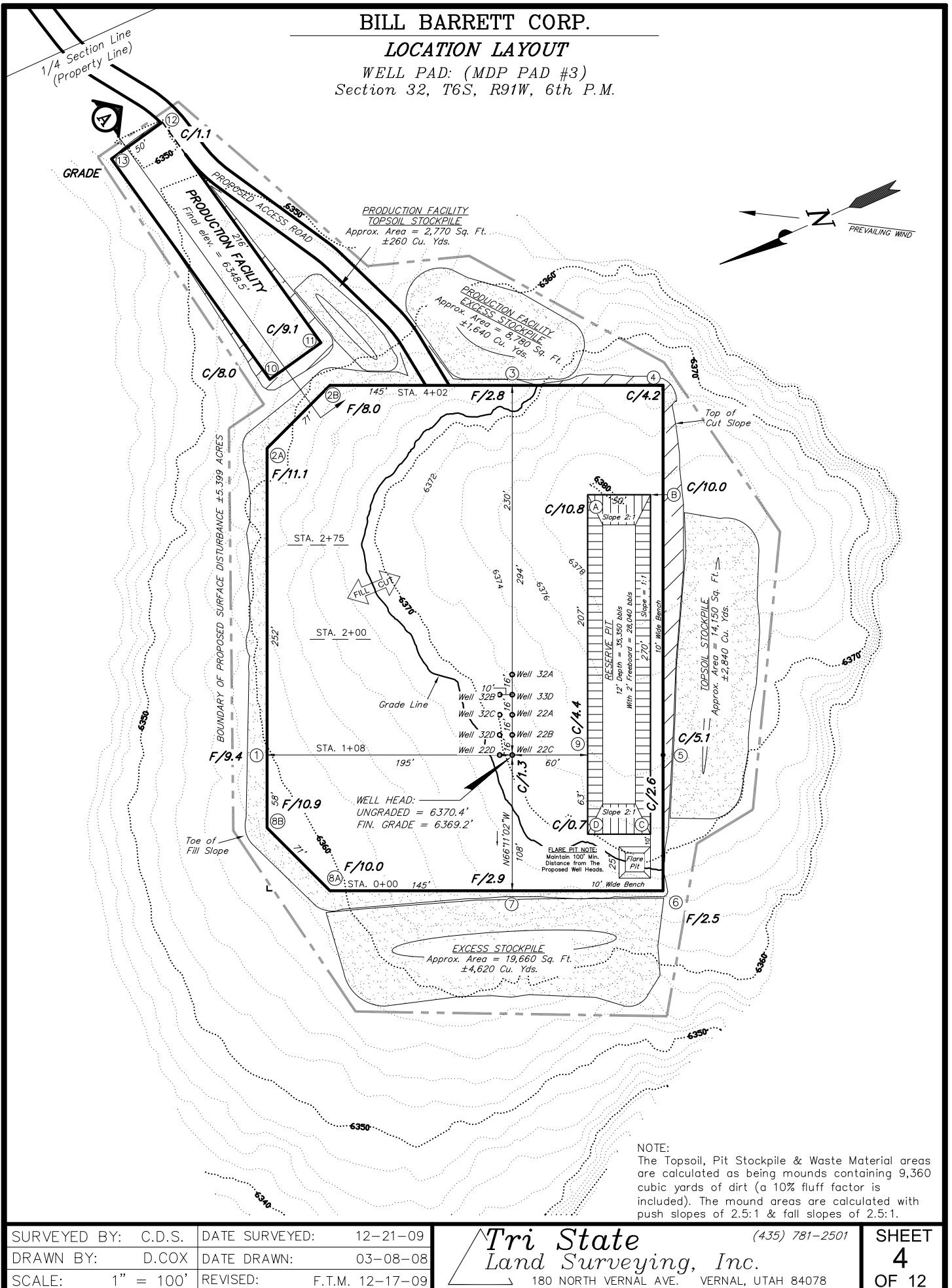


BILL BARRETT CORP.

LOCATION LAYOUT

WELL PAD: (MDP PAD #3)
Section 32, T6S, R91W, 6th P.M.



NOTE:
The Topsoil, Pit Stockpile & Waste Material areas are calculated as being mounds containing 9,360 cubic yards of dirt (a 10% fluff factor is included). The mound areas are calculated with push slopes of 2.5:1 & fall slopes of 2.5:1.

SURVEYED BY: C.D.S.	DATE SURVEYED: 12-21-09
DRAWN BY: D.COX	DATE DRAWN: 03-08-08
SCALE: 1" = 100'	REVISED: F.T.M. 12-17-09

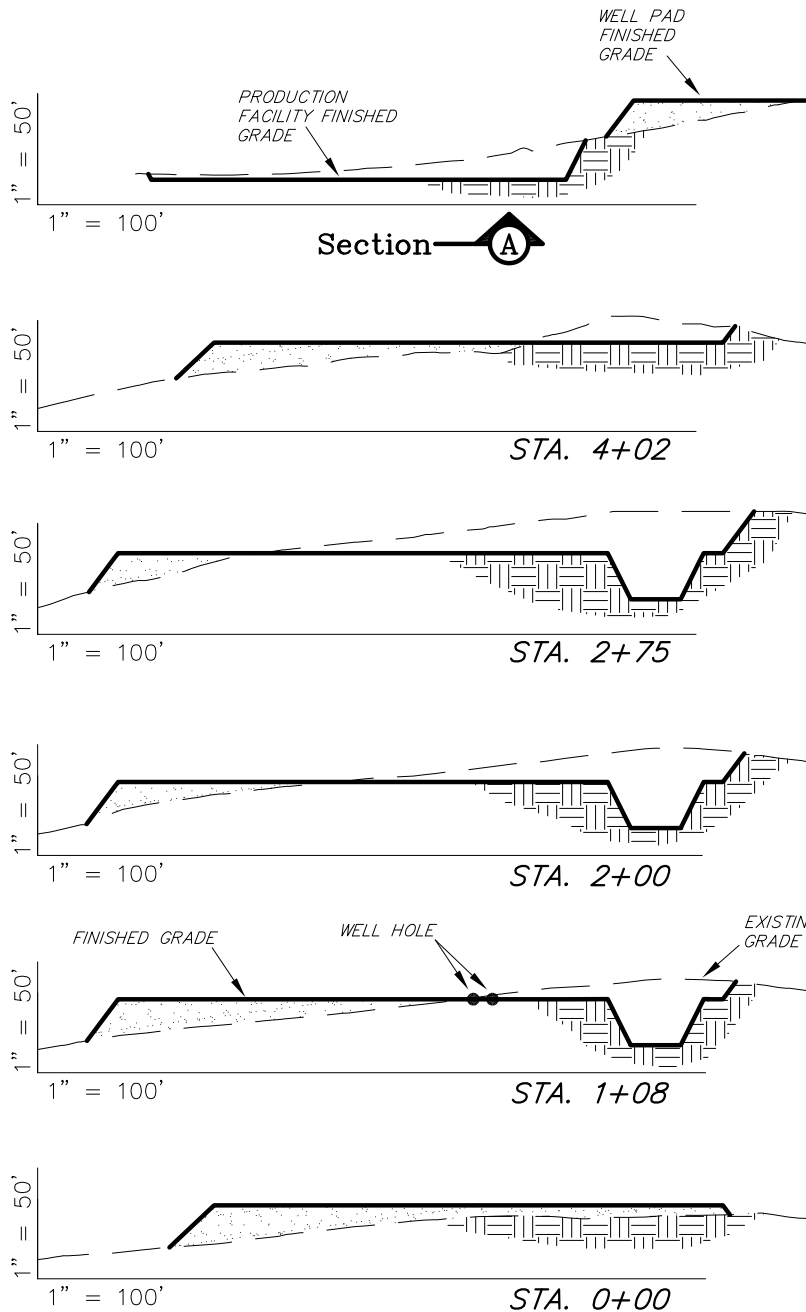
Tri State
Land Surveying, Inc.
180 NORTH VERNAL AVE. VERNAL, UTAH 84078
(435) 781-2501

SHEET
4
OF 12

BILL BARRETT CORP.

CROSS SECTIONS

WELL PAD: (MDP PAD #3)
Section 32, T6S, R91W, 6th P.M.



NOTE:
UNLESS OTHERWISE NOTED CUT SLOPES ARE AT 1:1 FILL SLOPES ARE AT 1.5:1

SURFACE DISTURBANCE AREAS	BARGE PROP. SEC. 32	BLM PROP. SEC. 32
WELL SITE	±5.399 ACRES	NA
TOTAL DISTURBANCE	±5.399 ACRES	NA
PROPOSED ACCESS ROAD DISTANCES	BARGE PROP. SEC. 32	BLM PROP. SEC. 32
PROPOSED ACCESS ROAD	406'	4,920'
PROD. PAD ACCESS ROAD	NA	NA
TOTAL DISTANCE	406'	4,920'

ESTIMATED EARTHWORK QUANTITIES (No Shrink or swell adjustments have been used) (Expressed in Cubic Yards)				
ITEM	CUT	FILL	6" TOPSOIL	EXCESS
RES. PITS	4,200	0	Topsoil is not included in Pad Cut	4,200
PAD	11,950	11,950	2,580	0
PROD.	1,490	0	240	1,490
TOTALS	17,640	11,950	2,820	5,690

SURVEYED BY: C.D.S. DATE SURVEYED: 12-21-09
DRAWN BY: D.COX DATE DRAWN: 03-08-08
SCALE: 1" = 100' REVISED: F.T.M. 12-17-09

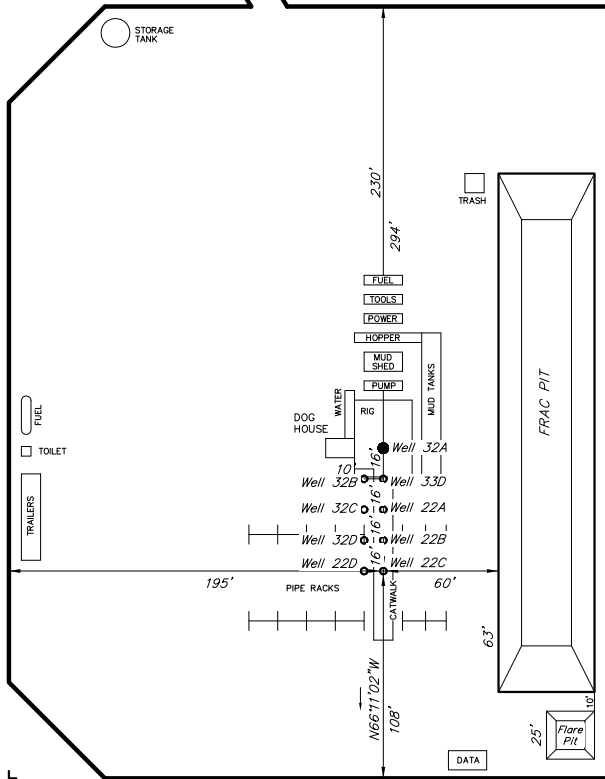
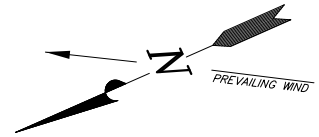
Tri State
Land Surveying, Inc.
180 NORTH VERNAL AVE. VERNAL, UTAH 84078
(435) 781-2501

SHEET
5
OF 12

BILL BARRETT CORP.

TYPICAL RIG LAYOUT

WELL PAD: (MDP PAD #3)
Section 32, T6S, R91W, 6th P.M.



FLARE PIT NOTE:
Maintain 100' Min.
Distance from The
Proposed Well Heads.

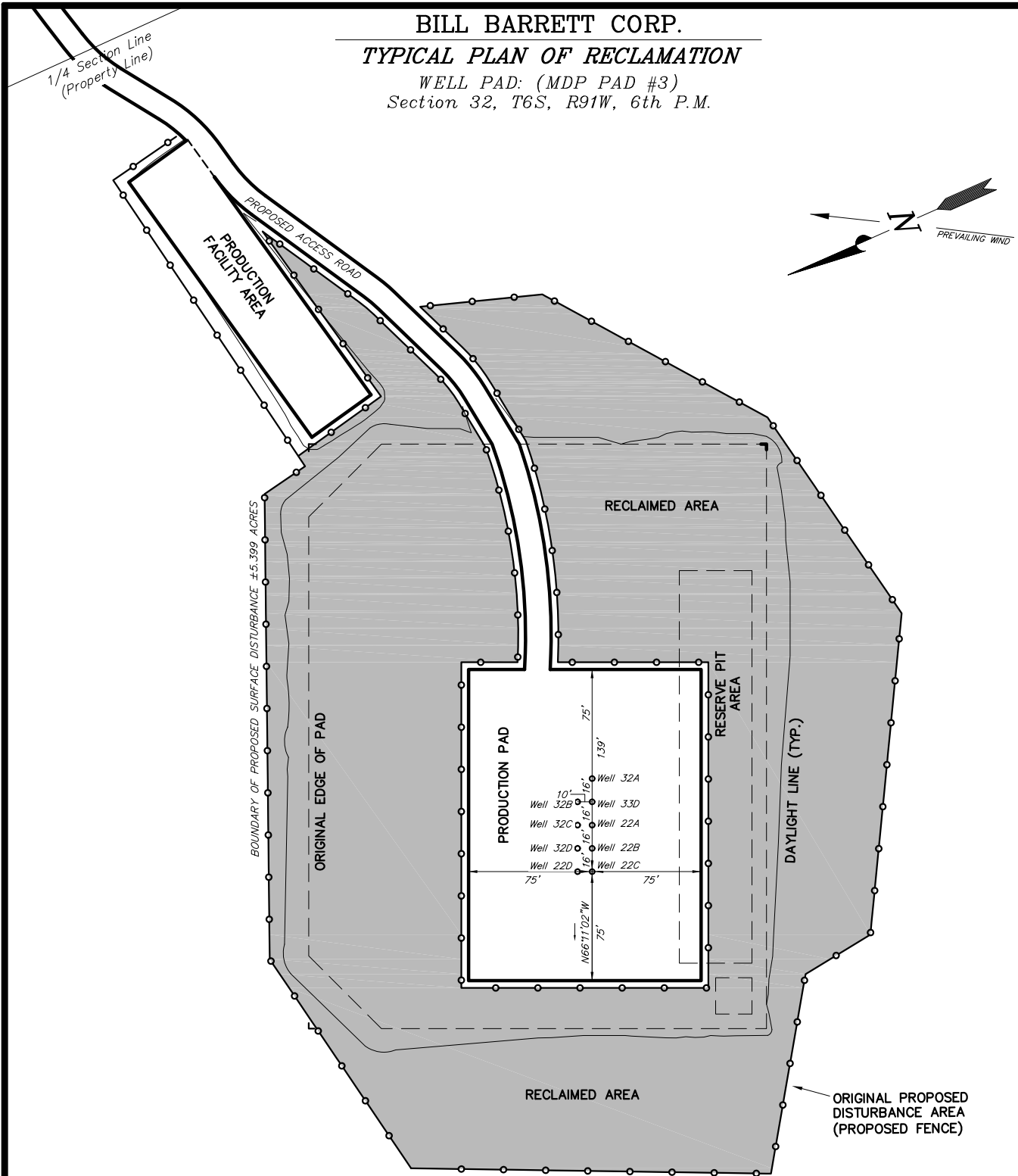
SURVEYED BY: C.D.S.	DATE SURVEYED: 08-31-09
DRAWN BY: F.T.M.	DATE DRAWN: 09-23-08
SCALE: 1" = 100'	REVISED: F.T.M. 09-29-09

Tri State
Land Surveying, Inc.
180 NORTH VERNAL AVE. VERNAL, UTAH 84078
(435) 781-2501

SHEET
6
OF 12

BILL BARRETT CORP.
TYPICAL PLAN OF RECLAMATION

WELL PAD: (MDP PAD #3)
 Section 32, T6S, R91W, 6th P.M.



DISTURBED AREA:

TOTAL DISTURBED AREA = 5.399 ACRES
 TOTAL RECLAIMED AREA = 3.888 ACRES
 UNRECLAIMED AREA = 1.511 ACRES

NOTE: RECLAIMED AREA TO
 INCLUDE SEEDING OF APPROVED
 VEGETATION AND SUFFICIENT STORM
 WATER MANAGEMENT SYSTEM.

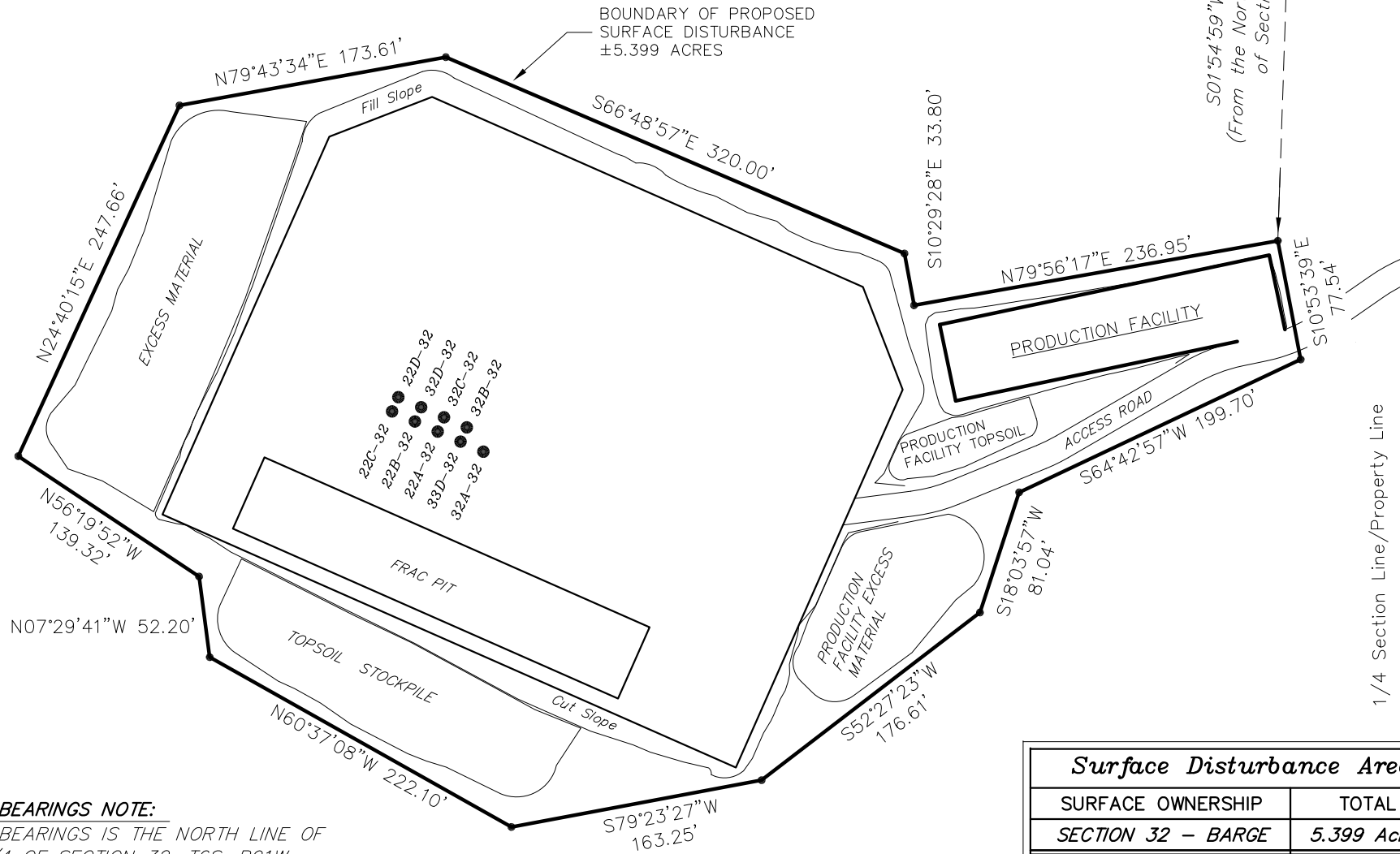
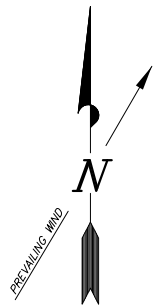
SURVEYED BY: C.D.S.	DATE SURVEYED: 12-21-09
DRAWN BY: D.COX	DATE DRAWN: 03-08-08
SCALE: 1" = 100'	REVISED: F.T.M. 12-17-09

Tri State
 Land Surveying, Inc.
 180 NORTH VERNAL AVE. VERNAL, UTAH 84078
 (435) 781-2501

SHEET
7
 OF 12

BILL BARRETT CORP. *SURFACE DISTURBANCE AREA*

WELL PAD: (MDP PAD #3)
Section 32, T6S, R91W, 6th P.M.



BASIS OF BEARINGS NOTE:

BASIS OF BEARINGS IS THE NORTH LINE OF THE NE 1/4 OF SECTION 32, T6S, R91W, 6TH P.M. WHICH IS TAKEN FROM G.P.S. OBSERVATIONS TO BEAR S88°42'50"W A MEASURED DISTANCE OF 2652.31'

SURVEYED BY: C.D.S.	DATE SURVEYED: 12-21-09
DRAWN BY: F.T.M.	DATE DRAWN: 12-22-09
SCALE: 1" = 100'	REVISED:

Tri State
Land Surveying, Inc.
180 NORTH VERNAL AVE. VERNAL, UTAH 84078

<i>Surface Disturbance Area</i>	
SURFACE OWNERSHIP	TOTAL
SECTION 32 - BARGE	5.399 Acres
TOTAL PAD DISTURBANCE	5.399 Acres

SHEET
8
OF 12