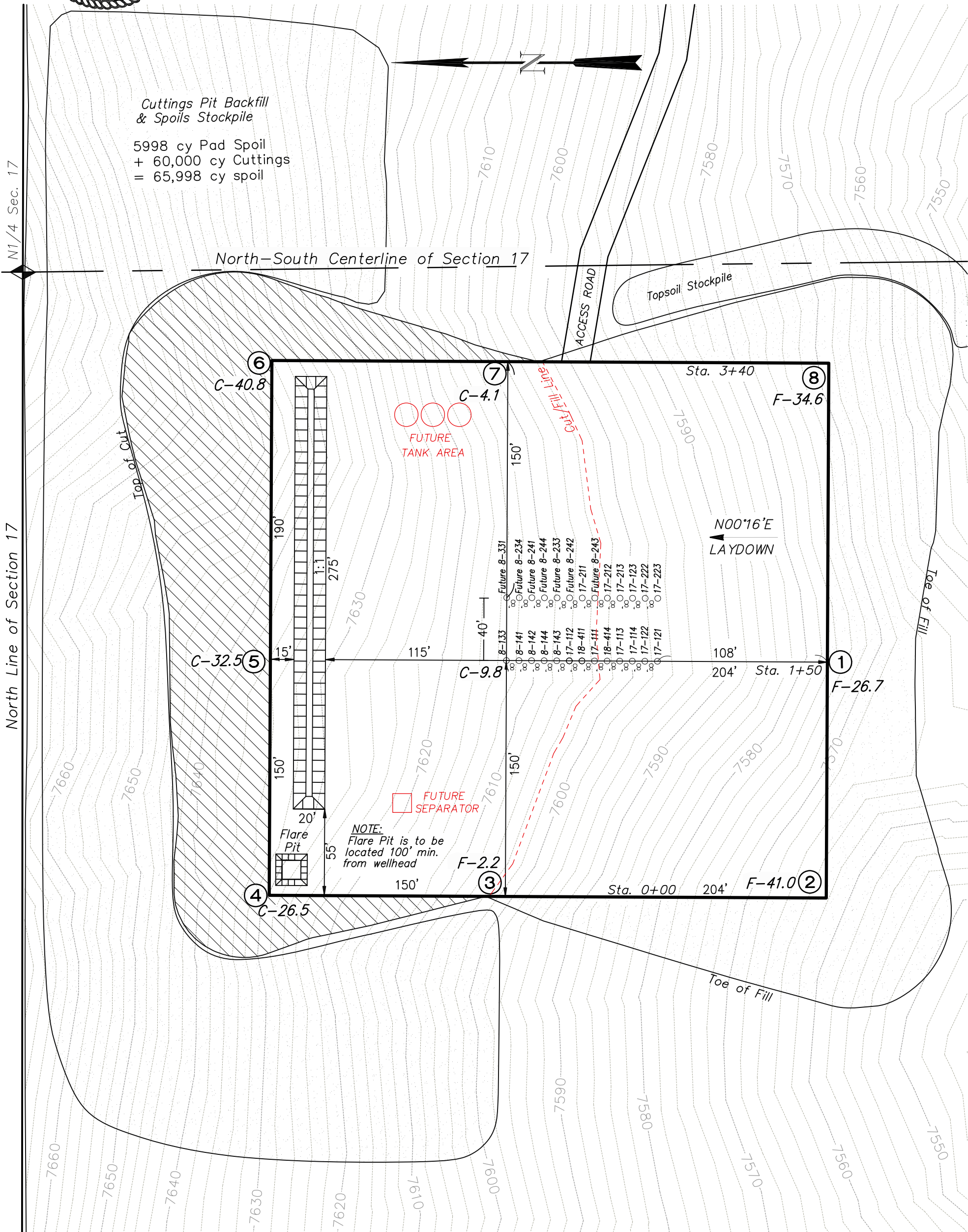




Delta Petroleum Corporation
LOCATION LAYOUT FOR
PAD NBC 17C
SECTION 17, T9S, R93W, 6th P.M.



NOTES:
Elev. Ungraded Ground At Loc. Stake = 7613.1'
FINISHED GRADE ELEV. AT LOC. STAKE = 7603.3'

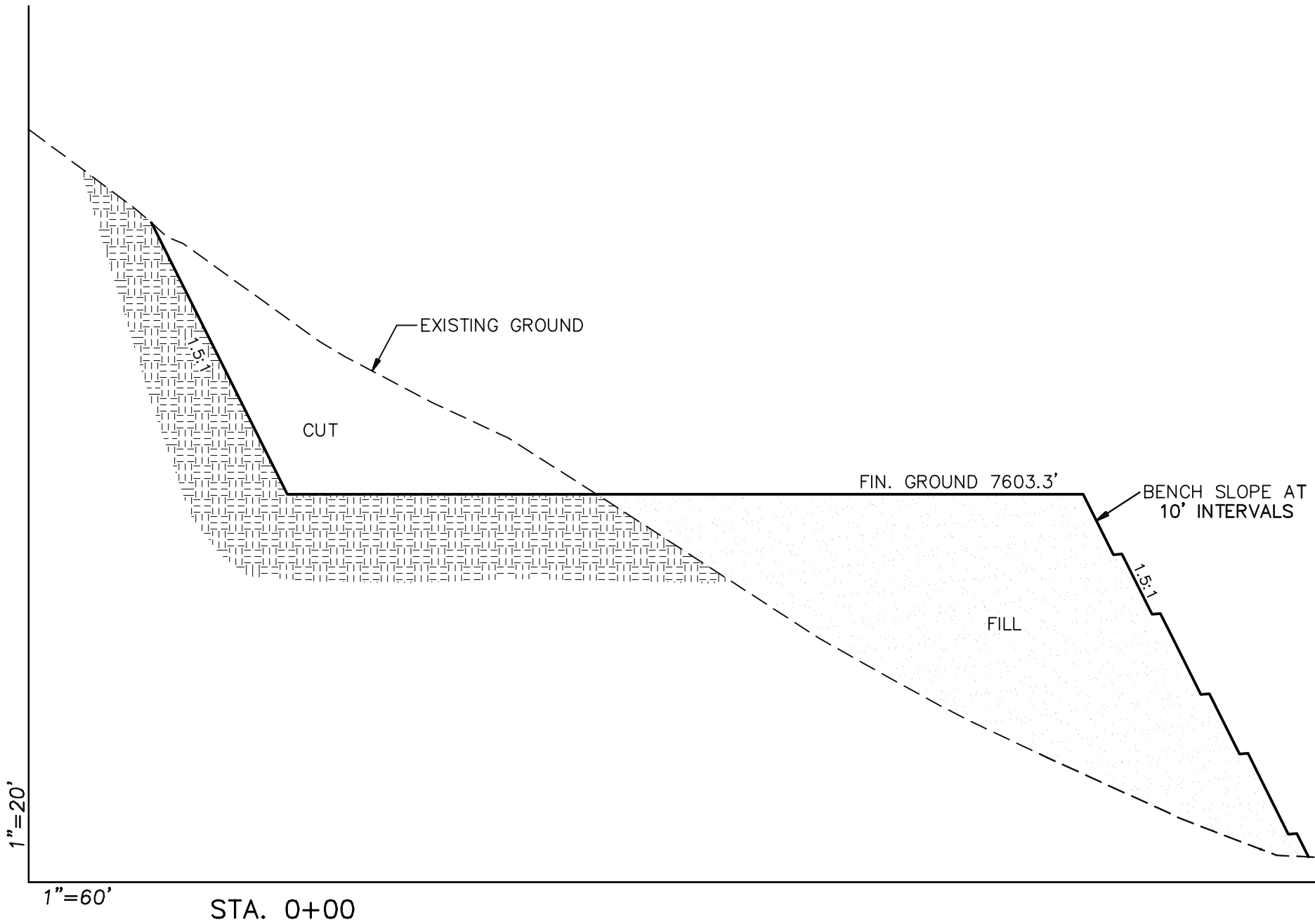


906 Main Street
Evanston, Wyoming 82930
Phone No. (307) 789-4545

Location Layout		Scale: 1" = 60'	SHEET 6
Project No.	08-07-11	Date Surveyed: 8/21/08	
Date	9/10/08	Latest Revision Date: 2/10/10	
Drawn:			



Delta Petroleum Corporation
LOCATION LAYOUT FOR
PAD NBC 17C
SECTION 17, T9S, R93W, 6th P.M.



APPROXIMATE YARDAGES

CUT	
(6") Topsoil Stripping	= 3,719 Cu. Yds.
Remaining Location	= 64,255 Cu. Yds.
TOTAL CUT	= 67,974 CU. YDS.
FILL	= 58,257 CU. YDS.
EXCESS MATERIAL	= 9,717 Cu. Yds.
EXCESS UNBALANCE	= 0 Cu. Yds.
(After Interim Rehabilitation)	

APPROXIMATE ACREAGES

APPROX. WELL DISTURBANCE	= ±7.6 ACRES
ACCESS ROAD DISTURBANCE	= ±0.0 ACRES
TOTAL	= ±7.6 ACRES

NOTE:

ALL CUT AND FILL SLOPES ARE AT 1.5:1 UNLESS OTHERWISE NOTED.



906 Main Street
Evanston, Wyoming 82930
Phone No. (307) 789-4545

Cross Sections		Scale: As Shown	SHEET 7
Project No.	08-07-11	Date Surveyed: 8/21/08	
Date Drawn:	9/10/08	Latest Revision Date: 2/10/10	



Delta Petroleum Corporation
LOCATION LAYOUT FOR
PAD NBC 17C
SECTION 17, T9S, R93W, 6th P.M.

