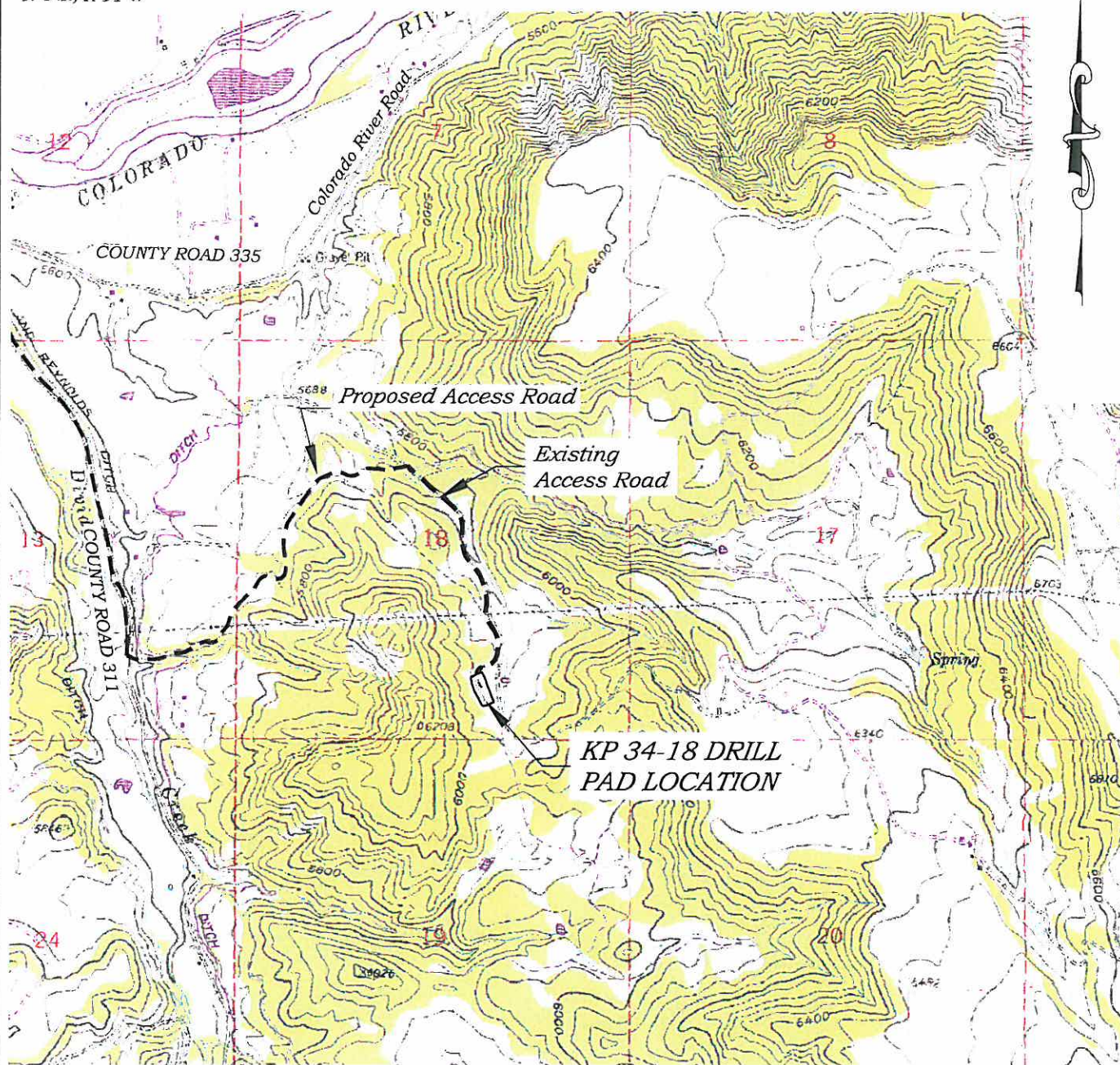


Section 18  
T. 6 S., R 91 W



GRAPHIC SCALE IN FEET  
1 INCH = 2000 FEET

**ACCESS DESCRIPTION:**

FROM THE INTERSECTION OF COLORADO INTERSTATE 70 OVERPASS (Exit 97) AND RIVER FRONTAGE ROAD SOUTH OF SILT, COLORADO, PROCEED EAST  $\pm 0.4$  MILES ALONG RIVER FRONTAGE ROAD TO THE INTERSECTION WITH COUNTY ROAD 311 (DIVIDE CREEK ROAD), PROCEED RIGHT IN A SOUTHERLY TO EASTERLY DIRECTION  $\pm 2.0$  MILES TO A 'Y' INTERSECTION WITH COUNTY ROAD 335, PROCEED RIGHT IN AN SOUTHERLY DIRECTION ALONG COUNTY ROAD 311  $\pm 1.3$  MILES TO THE INTERSECTION WITH A DIRT GRAVEL ROAD, PROCEED LEFT IN AN EASTERLY TO NORTHEASTERLY DIRECTION  $\pm 1.0$  MILES TO THE INTERSECTION WITH A DIRT GRAVEL ROAD, PROCEED PROCEED RIGHT IN AN SOUTHERLY DIRECTION  $\pm 0.6$  MILES TO THE EXISTING KP 34-18 DRILL PAD LOCATION, AS SHOWN HEREON.

REVISED: 3/12/10

SCALE: 1" = 2000'  
DATE: 12/15/09  
PLAT: 5 of 9  
PROJECT: Williams  
DFT: cws

**Construction Plan Prepared for:**

**Williams Williams Production, RMT**

*KP 34-18 Drill Pad - Plat 5  
ACCESS ROAD MAP*

136 East Third Street  
Rifle, Colorado 81650  
Ph. (970) 625-1330  
Fax (970) 625-2773

**BOOKCLIFF**  
Survey Services, Inc.