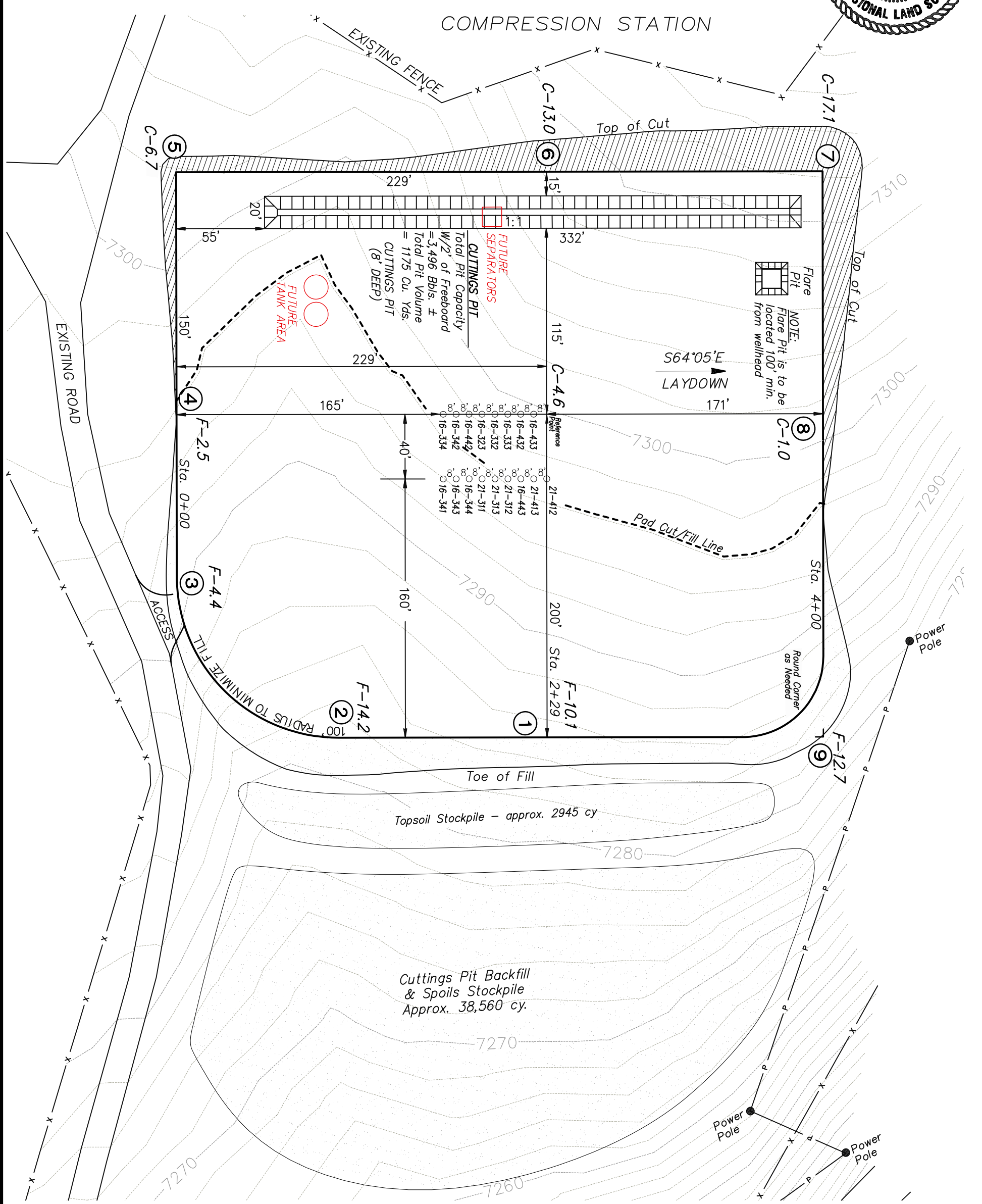
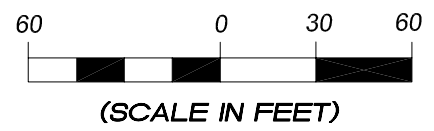


Delta Petroleum Corporation
 LOCATION LAYOUT FOR
 PAD BCU 16PA
 SECTION 16, T9S, R93W, 6th P.M.



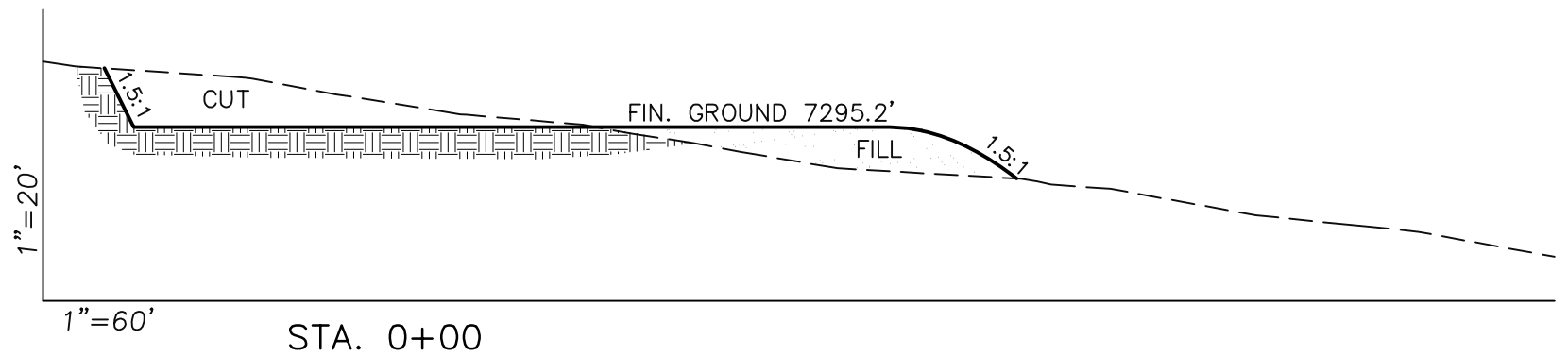
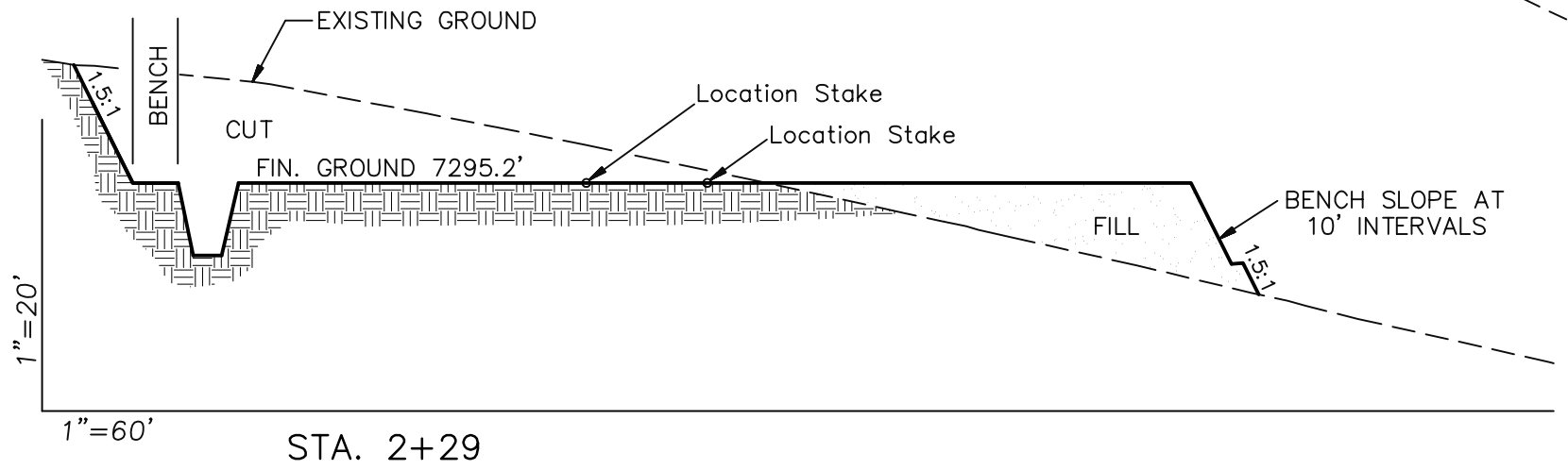
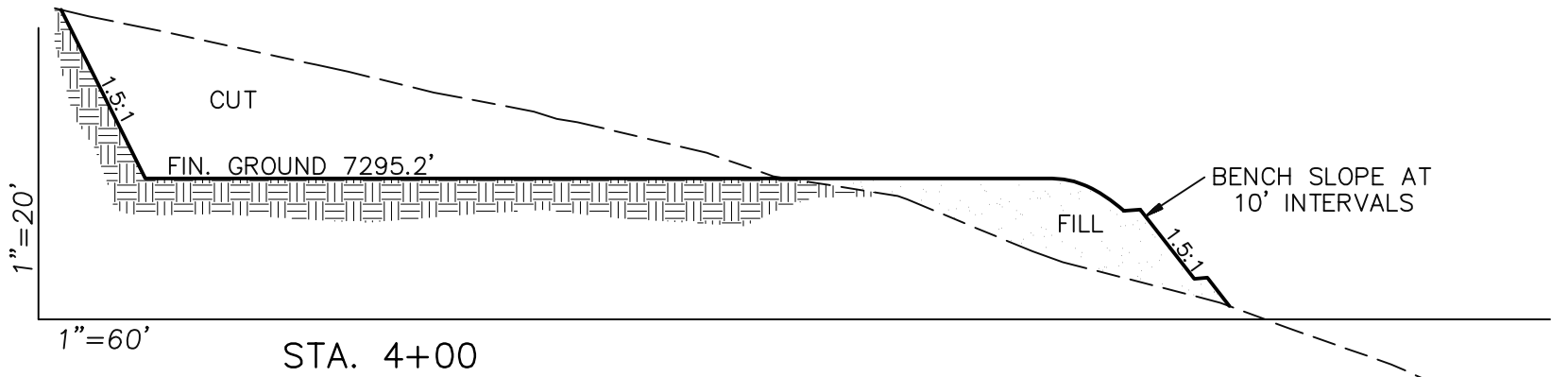
NOTES:
 Elev. Ungraded Ground At Loc. Stake = 7299.8'
 FINISHED GRADE ELEV. AT LOC. STAKE = 7295.2'



Location Layout		Scale: 1" = 60'	SHEET 6	
Project No.	08-07-07A	Date Surveyed:		8/01/08
Date Drawn:	8/12/08	Latest Revision		2/10/10
		Date:		



Delta Petroleum Corporation
CROSS SECTIONS FOR
PAD BCU 16PA
 SECTION 16, T9S, R93W, 6th P.M.



APPROXIMATE YARDAGES

CUT	
(6") Topsoil Stripping	= 2926 Cu. Yds.
Remaining Location	= 18,186 Cu. Yds.
TOTAL CUT	= 21,112 CU. YDS.
FILL	= 16,486 CU. YDS.

EXCESS MATERIAL	= 4626 Cu. Yds.
EXCESS UNBALANCE	= 0 Cu. Yds.
(After Interim Rehabilitation)	

APPROXIMATE ACREAGES

APPROX. WELL DISTURBANCE	= ±6.2 ACRES
ACCESS ROAD DISTURBANCE	= ±0.0 ACRES
TOTAL	= ±6.2 ACRES

NOTE:

ALL CUT AND FILL SLOPES ARE AT 1.5:1 UNLESS OTHERWISE NOTED.



906 Main Street
 Evanston, Wyoming 82930
 Phone No. (307) 789-4545

<i>Cross Sections</i>		Scale: As Shown	SHEET 7
Project No.	08-07-07A	Date Surveyed: 8/01/08	
Date Drawn:	8/12/08	Latest Revision Date: 2/10/10	