

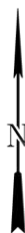
LEGEND

- PROPOSED LOCATION
- EXISTING ROAD



Wasatch Surveying Associates

906 Main Street Evanston, Wyoming 82930
Phone No. (307) 789-4545 Fax 307-789-5722



DELTA PETROLEUM CORP.

BCU 16PA Pad
SECTION 16, T9S, R93W, 6th, P.M.
MESA COUNTY, COLORADO

ACCESS ROAD MAP

PROJECT NUMBER
08-07-07A
DATE: 2/10/10
SCALE: 1:100,000

PAGE

3