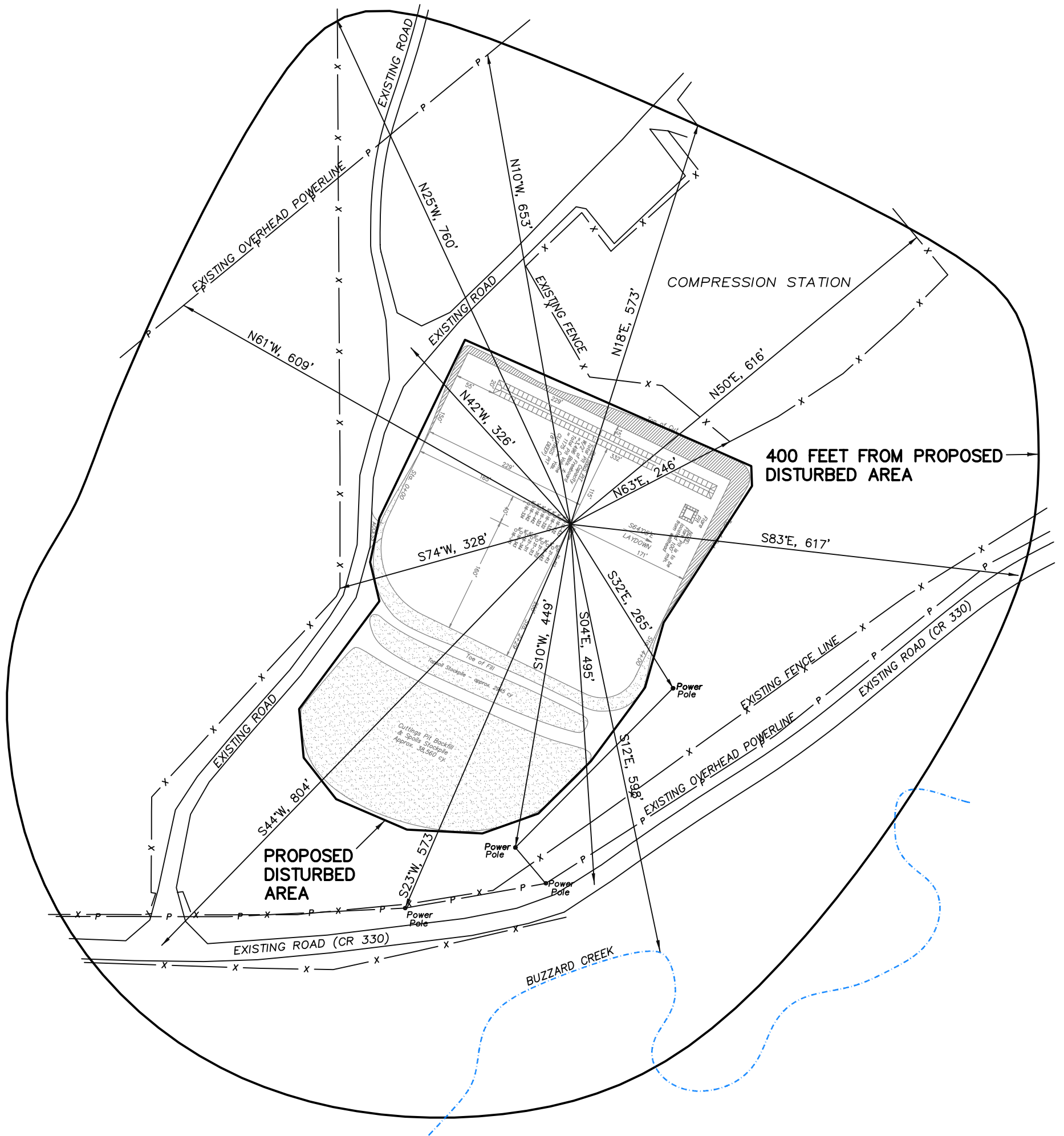
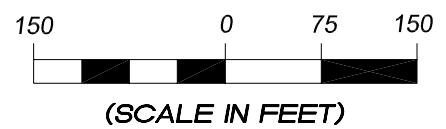


Delta Petroleum Corporation
ADDENDUM TO LEGAL PLATS FOR
PAD BCU 16PA
SECTION 16, T9S, R93W, 6th P.M.



Surface use of pad is grazing.
Vegetation consists mainly of
sage brush, oak brush and native
grasses.



906 Main Street
Evanston, Wyoming 82930
Phone No. (307) 789-4545

Survey Addendum		Scale: 1" = 150'	SHEET 1
Project No.	08-07-07A	Date Surveyed: 8/01/08	
Date Drawn:	8/12/08	Latest Revision Date: 2/10/10	