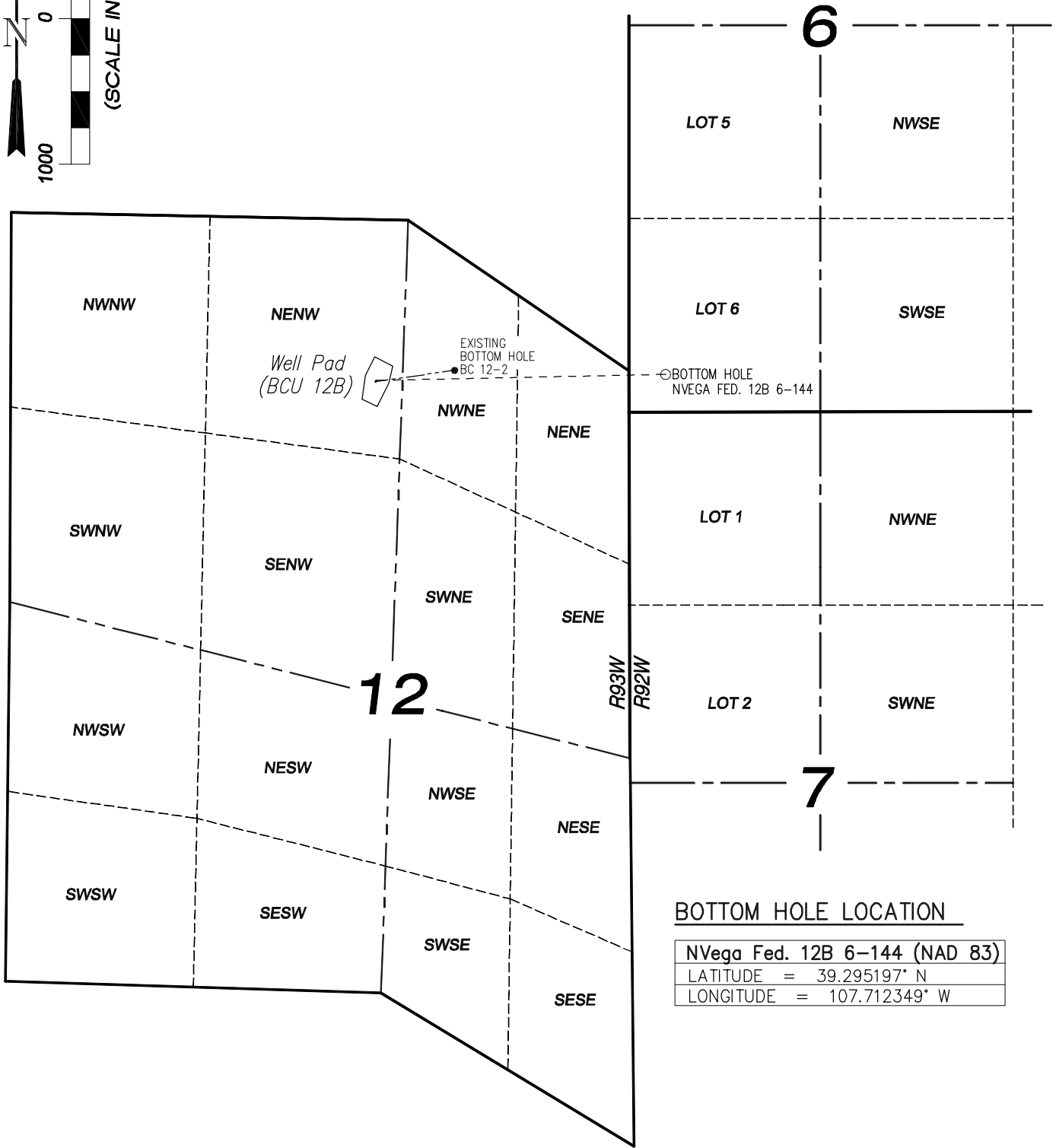
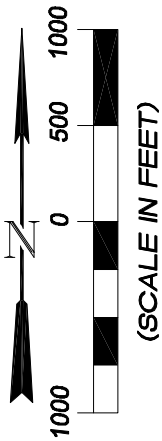


MULTI-WELL PLAN
Delta Petroleum Corporation
Well Pad (BCU 12B)
Sections 12 & 6,
T9S, R93W, 6th P.M.



BOTTOM HOLE LOCATION

NVega Fed. 12B 6-144 (NAD 83)	
LATITUDE	= 39.295197° N
LONGITUDE	= 107.712349° W



906 Main Street
 Evanston, Wyoming 82930
 Phone No. (307) 789-4545

Multi-Well Plan		Scale: 1" = 1000'	SHEET 8
Project No.	09-01-07	Date Surveyed: 10/5/09	
Date Drawn:	3/04/10	Latest Revision Date:	