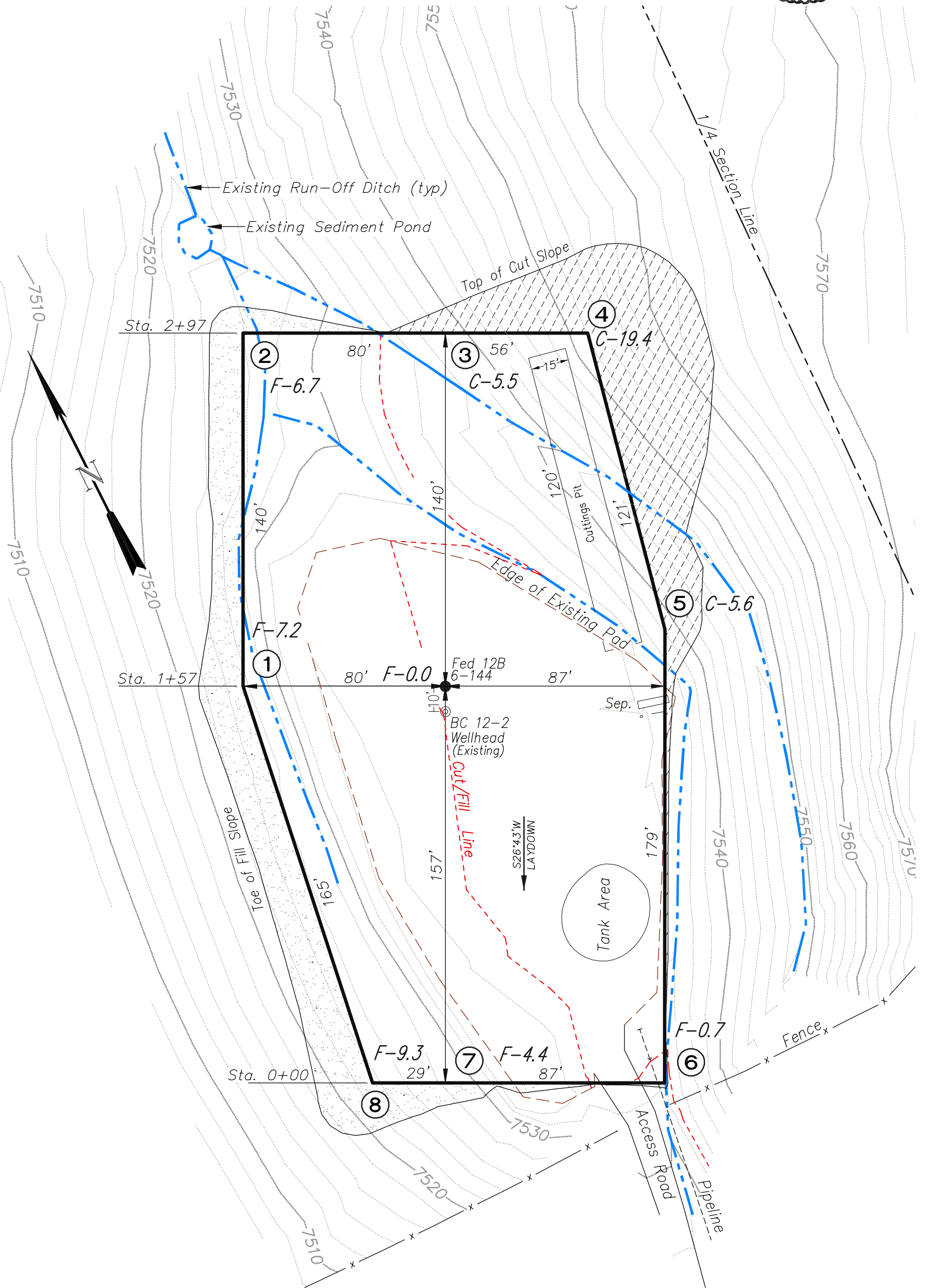
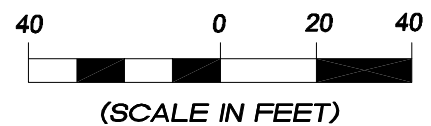


Delta Petroleum Corporation
 LOCATION LAYOUT FOR
 BCU 12B PAD
 SECTION 12, T9S, R93W, 6th P.M.



NOTES:

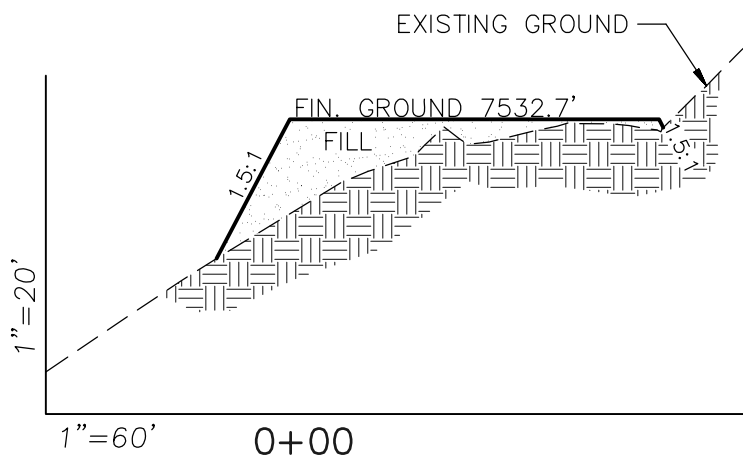
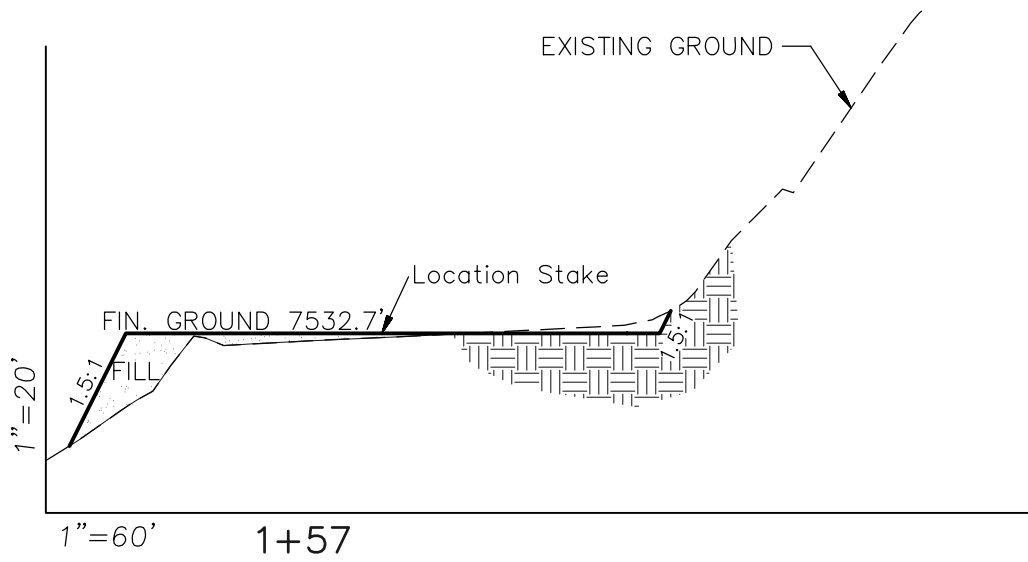
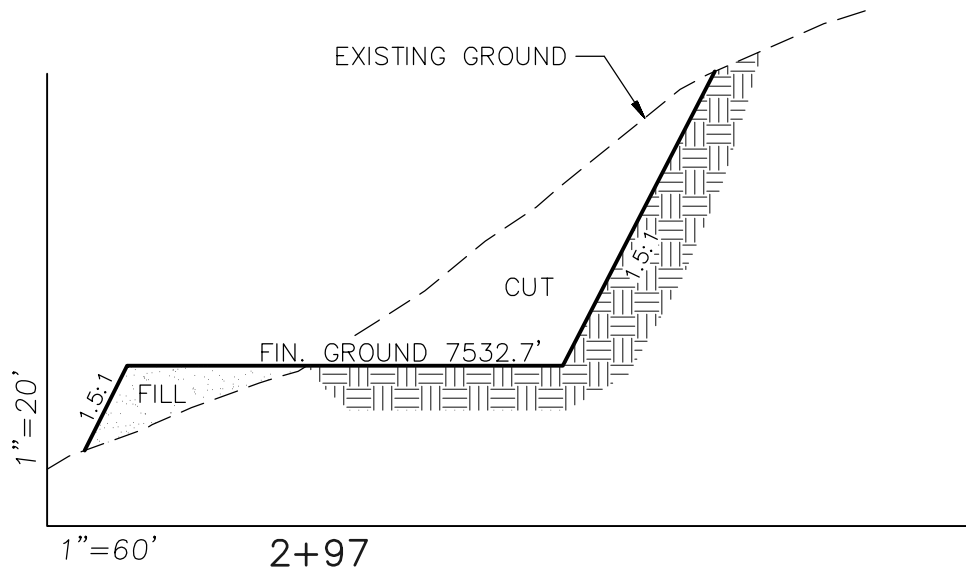
Elev. Ungraded Ground At Loc. Stake = 7532.7'
 FINISHED GRADE ELEV. AT LOC. STAKE = 7532.7'



906 Main Street
 Evanston, Wyoming 82930
 Phone No. (307) 789-4545

Location Layout		Scale: 1" = 60'	SHEET
Project No.	09-01-07	Date Surveyed:	10/5/09
Date Drawn:	10/21/09	Latest Revision Date:	3/04/10
			6

Delta Petroleum Corporation
 LOCATION LAYOUT FOR
 BCU 12B PAD
 SECTION 12, T9S, R93W, 6th P.M.



APPROXIMATE YARDAGES

(6") Topsoil Stripping = 700 Cu. Yds.
 Remaining Location = 2836 Cu. Yds.
 TOTAL CUT = 3536 CU. YDS.
 FILL = 2772 CU. YDS.
 EXCESS MATERIAL = 764 Cu. Yds.
 EXCESS UNBALANCE = 0 Cu. Yds.
 (After Interim Rehabilitation)

APPROXIMATE ACREAGES

APPROX. WELL DISTURBANCE = ±1.4 ACRES
 ACCESS ROAD DISTURBANCE = ±0.0 ACRES
 TOTAL = ±1.4 ACRES

NOTE:

ALL CUT AND FILL SLOPES ARE AT 1.5:1 UNLESS OTHERWISE NOTED.



906 Main Street
 Evanston, Wyoming 82930
 Phone No. (307) 789-4545

<i>Cross Sections</i>		Scale: As Shown	SHEET 7
Project No.	09-07-01	Date Surveyed: 10/5/09	
Date Drawn:	10/21/09	Latest Revision Date: 3/04/10	