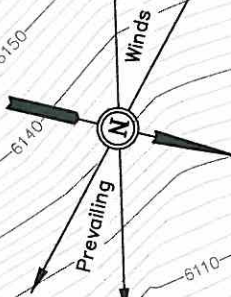


CONSTRUCTION LAYOUT DRAWING

WILLIAMS PRODUCTION RMT COMPANY

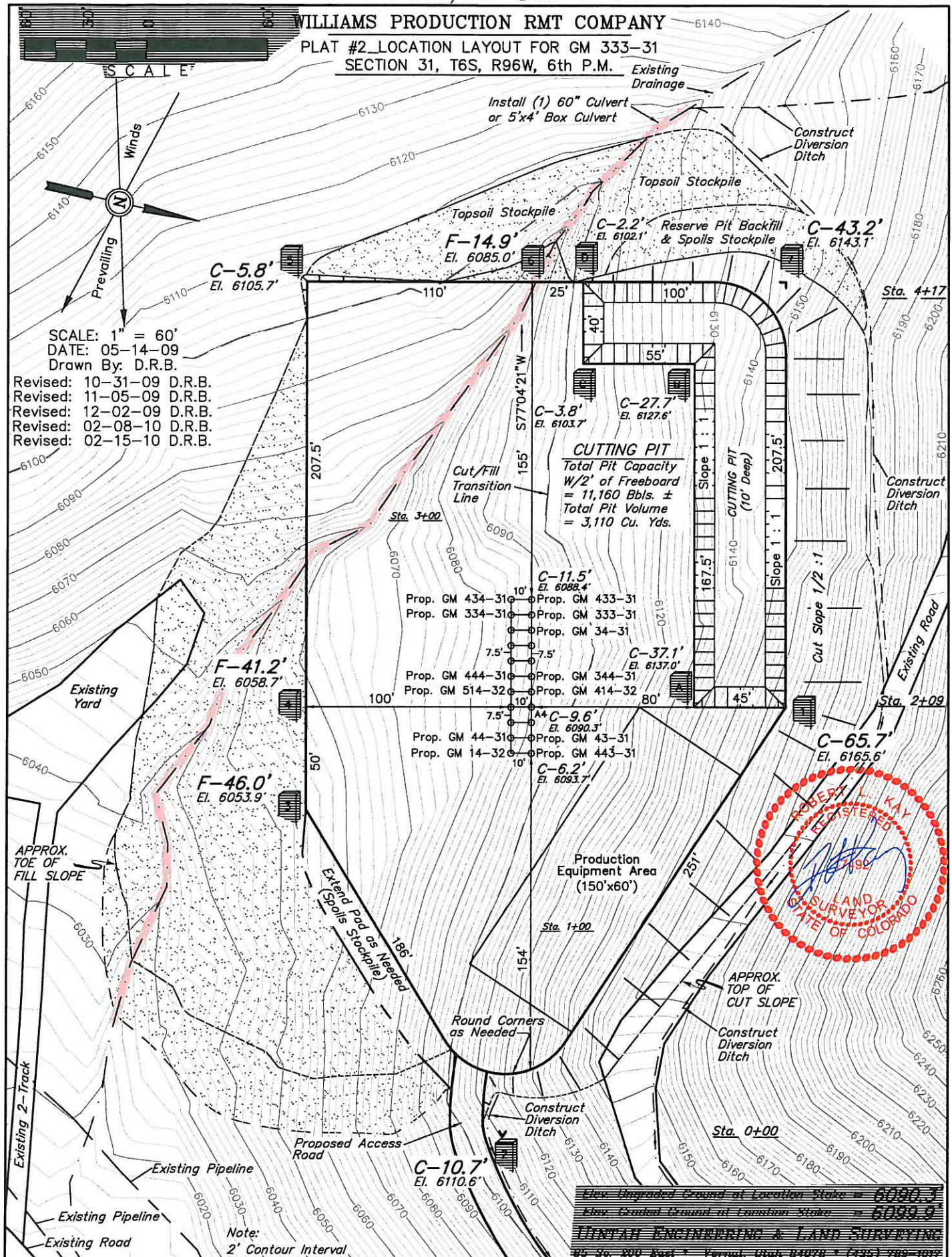
PLAT #2 LOCATION LAYOUT FOR GM 333-31
SECTION 31, T6S, R96W, 6th P.M.

SCALE



SCALE: 1" = 60'
DATE: 05-14-09
Drawn By: D.R.B.

Revised: 10-31-09 D.R.B.
Revised: 11-05-09 D.R.B.
Revised: 12-02-09 D.R.B.
Revised: 02-08-10 D.R.B.
Revised: 02-15-10 D.R.B.



Elev. Ungraded Ground at Location Stake = 6090.3'
Elev. Graded Ground at Location Stake = 6090.9'
UNTAH ENGINEERING & LAND SURVEYING
85 So. 200 East • Pocatello, Utah 84404 • (435) 789-1019

CONSTRUCTION LAYOUT / X SECTION

WILLIAMS PRODUCTION RMT COMPANY

PLAT #3_TYPICAL CROSS SECTIONS FOR GM 333-31
SECTION 31, T6S, R96W, 6th P.M.



X-Section
Scale
1" = 40'
1" = 100'

DATE: 05-14-09

Drawn By: D.R.B.

Revised: 05-27-09 D.R.B.

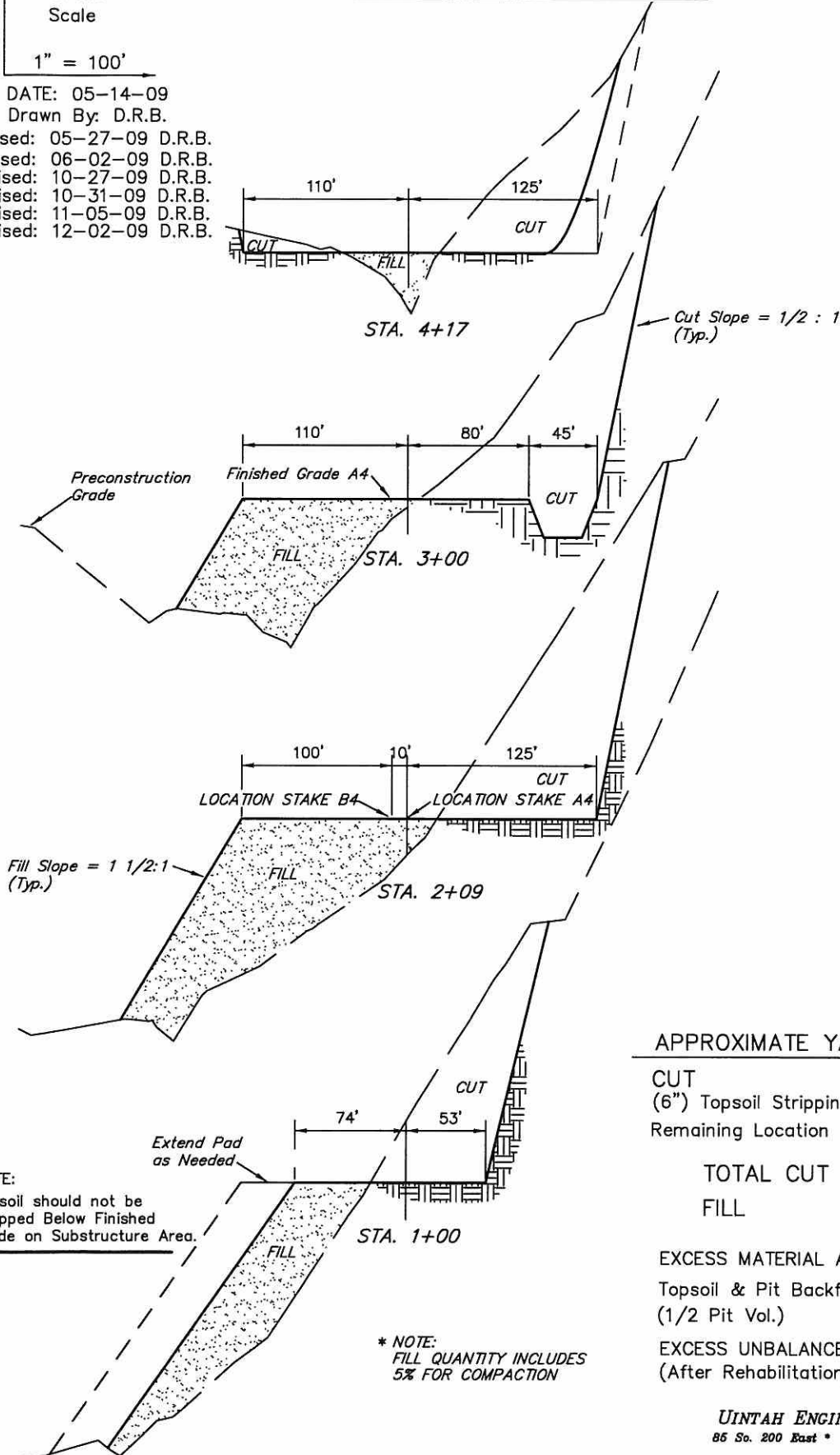
Revised: 06-02-09 D.R.B.

Revised: 10-27-09 D.R.B.

Revised: 10-31-09 D.R.B.

Revised: 11-05-09 D.R.B.

Revised: 12-02-09 D.R.B.



APPROXIMATE YARDAGES

CUT	
(6") Topsoil Stripping	= 2,790 Cu. Yds.
Remaining Location	= 53,140 Cu. Yds.
TOTAL CUT	= 55,930 CU.YDS.
FILL	= 50,040 CU.YDS.
EXCESS MATERIAL AFTER	= 5,890 Cu. Yds.
Topsoil & Pit Backfill (1/2 Pit Vol.)	= 4,350 Cu. Yds.
EXCESS UNBALANCE (After Rehabilitation)	= 1,540 Cu. Yds.

UINTAH ENGINEERING & LAND SURVEYING
85 So. 200 East • Vernal, Utah 84078 • (435) 789-1017