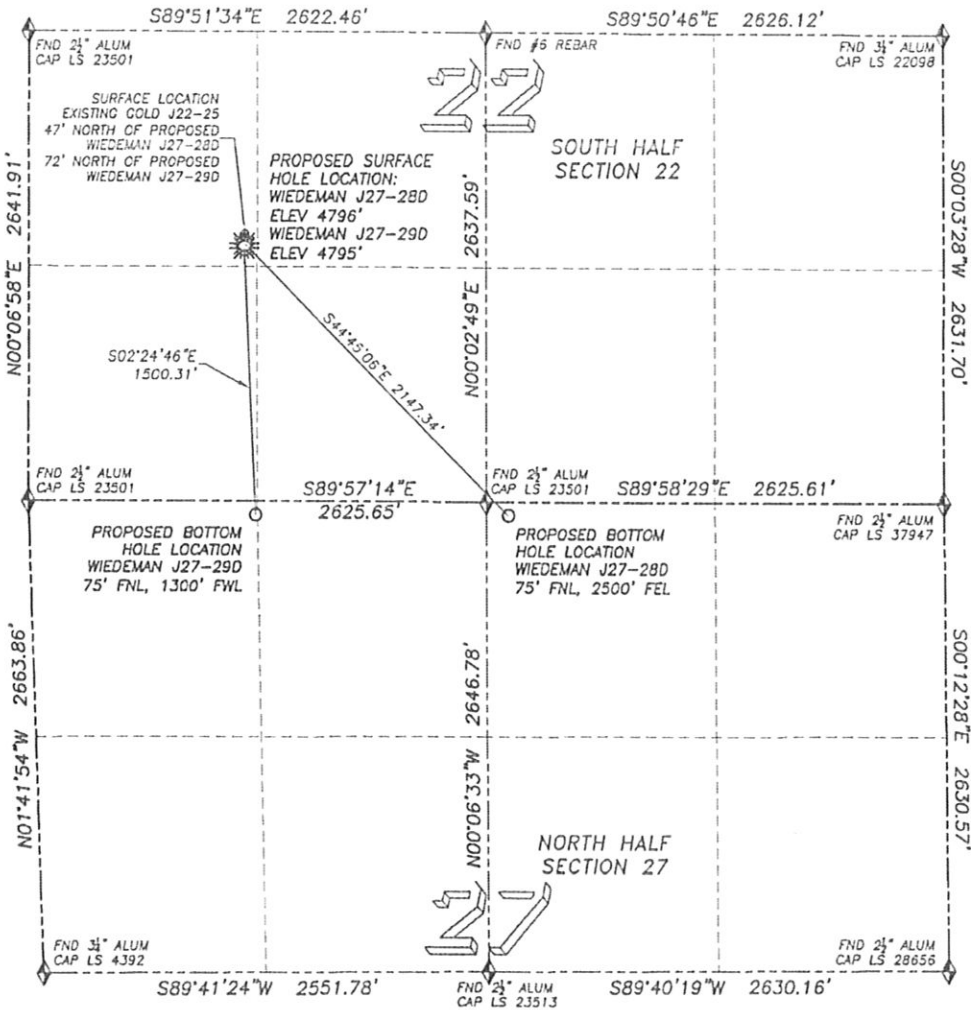


Multi well plan

DALEY LAND SURVEYING, INC. PARKER, CO. 80134 303 953 9841

DIRECTIONAL LAYOUT WIEDEMAN J27-28D & WIEDEMAN J27-29D

SECTION 22, TOWNSHIP 5 NORTH, RANGE 66 WEST OF THE 6TH PRINCIPAL MERIDIAN



- LEGEND**
- FOUND MONUMENT AS DESCRIBED
 - PROPOSED WELL
 - EXISTING WELL
 - BOTTOM HOLE
 - ABANDONED WELL

NAD 83 LATITUDE AND LONGITUDE

WIEDEMAN J27-28D SURFACE HOLE:
 LATITUDE: N40.38178'
 LONGITUDE: W104.77063'
 ELEVATION: 4796'
 PDOP 2.0
 1449' FSL, 1237' FWL

BOTTOM HOLE:
 LATITUDE: N40.37759'
 LONGITUDE: W104.76520'
 75' FNL, 2500' FEL, SEC. 27, T5N, R66W

NEAREST EXISTING WELL:
 GOLD J22-25 SURFACE HOLE
 LATITUDE: N40.38191'
 LONGITUDE: W104.77062'
 ELEVATION: 4797'
 47' NORTH

NAD 83 LATITUDE AND LONGITUDE

WIEDEMAN J27-29D SURFACE HOLE:
 LATITUDE: N40.38171'
 LONGITUDE: W104.77063'
 ELEVATION: 4795'
 PDOP 2.0
 1424' FSL, 1237' FWL

BOTTOM HOLE:
 LATITUDE: N40.37760'
 LONGITUDE: W104.77040'
 75' FNL, 1300' FWL, SEC. 27, T5N, R66W

NEAREST EXISTING WELL:
 GOLD J22-25 SURFACE HOLE
 LATITUDE: N40.38191'
 LONGITUDE: W104.77062'
 ELEVATION: 4797'
 72' NORTH