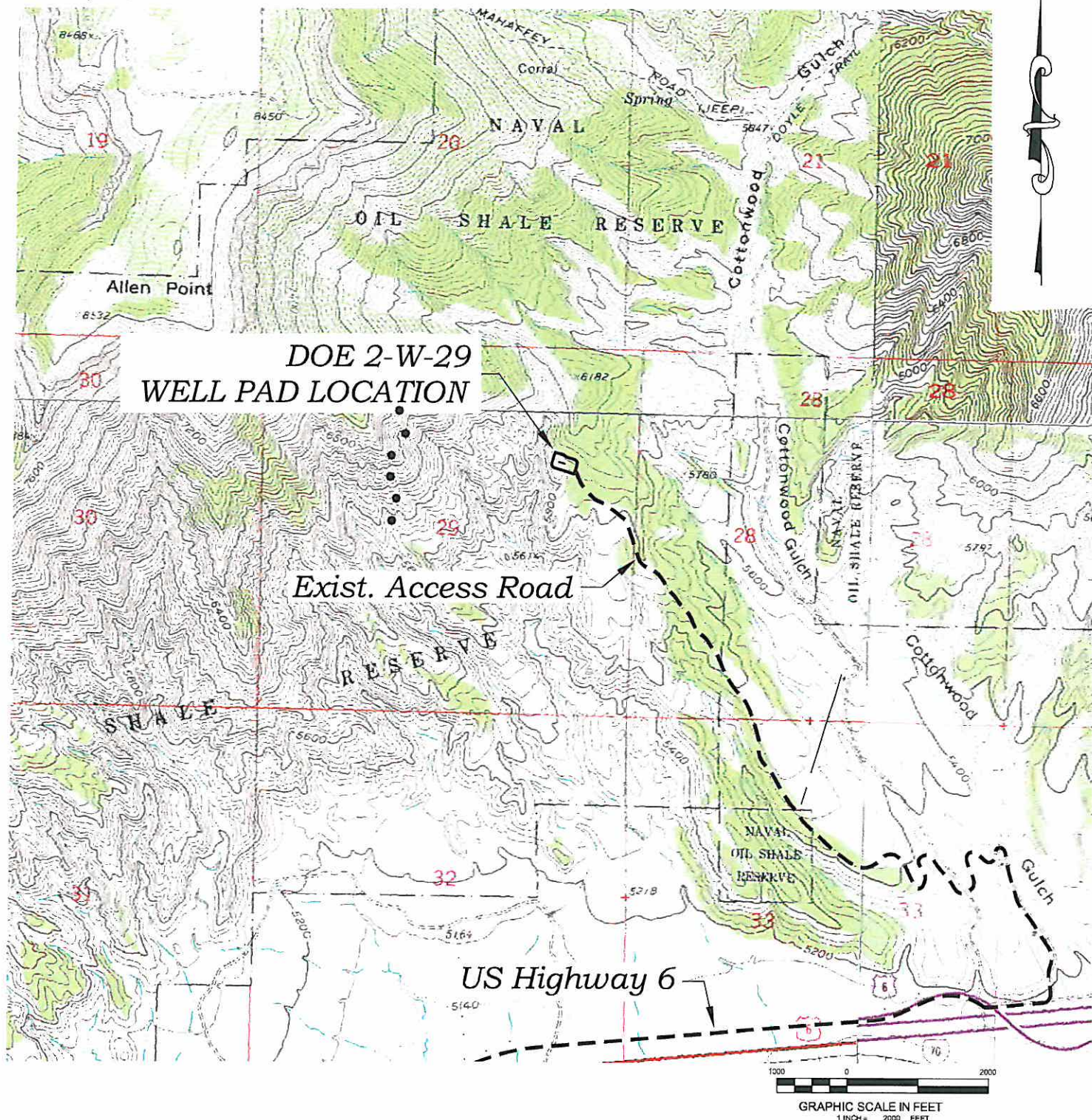


Section 29
T. 6 S., R 95 W



ACCESS DESCRIPTION:

FROM THE INTERSECTION OF STATE HIGHWAY 6 AND COUNTY ROAD 215 (PARACHUTE CREEK RD) NORTHEAST OF PARACHUTE, PROCEED EASTERLY ALONG STATE HIGHWAY 6 ± 3.1 MILES TO THE INTERSECTION WITH A DIRT/GRAVEL ROAD, PROCEED LEFT IN A EASTERLY DIRECTION ± 0.2 MILES TO THE INTERSECTION WITH A DIRT/GRAVEL ROAD, PROCEED LEFT IN A NORTHERLY DIRECTION ± 2.6 MILES TO THE EXISTING DOE 2-W-29 DRILL PAD LOCATION, AS SHOWN HEREON.

ACCESS ROAD MAP

Construction Plan Prepared for:

Williams Williams Production, RMT

DOE 2-W-29 Drill Pad - Plat 5

ACCESS & VICINITY MAP

SCALE:

1" = 2000'

DATE:

1/18/10

PLAT:

5 of 9

PROJECT:

Williams 2010

DFT:

CWS

156 East Third Street
Rifle, Colorado 81650
Ph. (970) 625-1330
Fax (970) 625-2773

