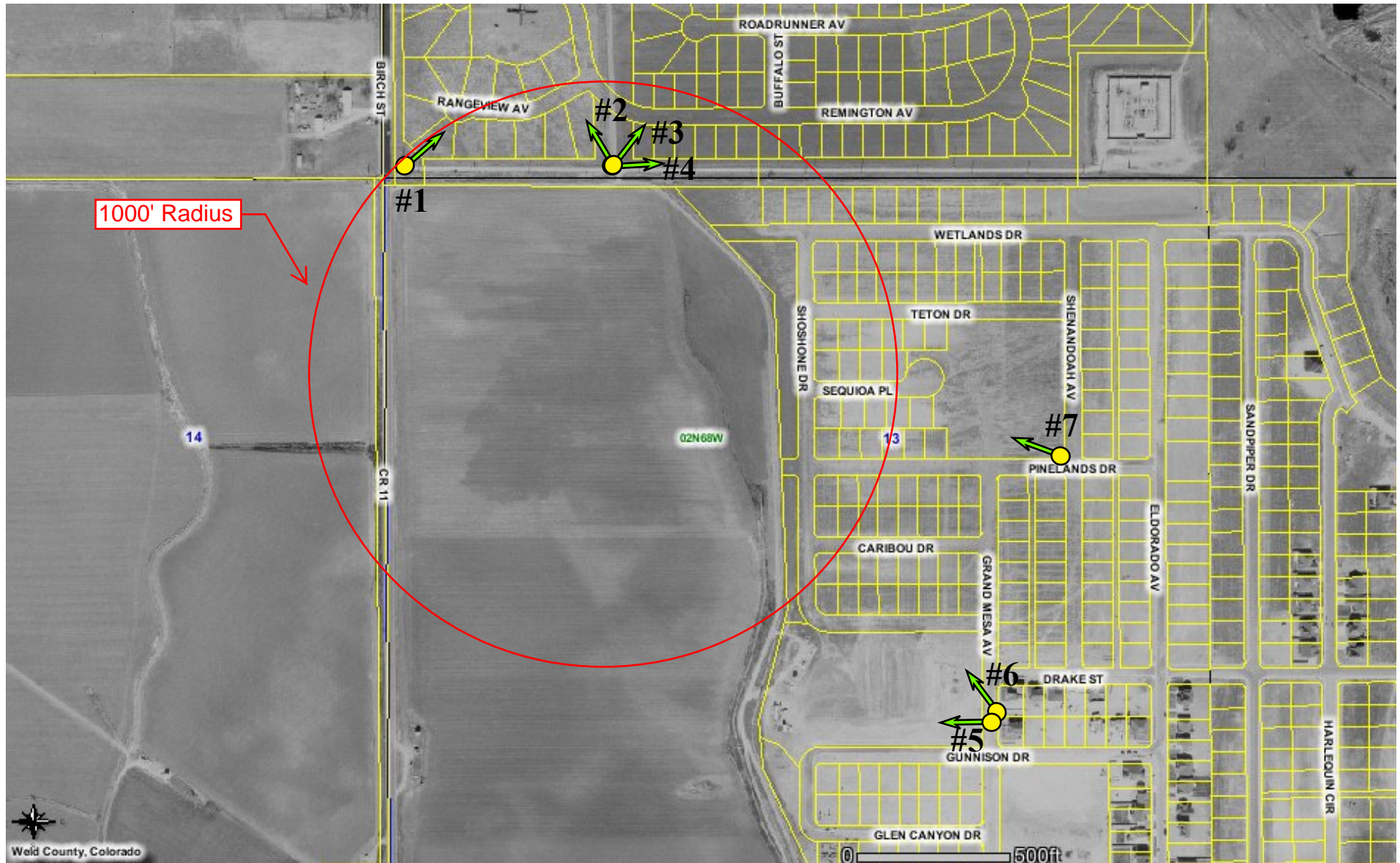


# Johnson 13-13J H.D.A. Field Inspection Picture

## Locations

●➔ Location and Direction of Picture





Picture #1- Taken by Clayton Doke, 3-11-2009, See overview map.



Picture #2- Taken by Clayton Doke, 3-11-2009, See overview map.



Picture #3 Taken by Clayton Doke, 3-11-2009, See overview map.



Picture #4- Taken by Clayton Doke, 3-11-2009, See overview map.



Picture #5 Taken by Clayton Doke, 3-11-2009, See overview map.



Picture #6- Taken by Clayton Doke, 3-11-2009, See overview map.



Picture #7- Taken by Clayton Doke, 3-11-2009, See overview map.

## NORTH DETAIL



Pictures combined with Weld Assessor parcel information show that there are less than 18 Building units within the half-circle and less than what is adequate to classify the Johnson 13-13J as in a HDA.