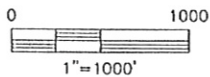
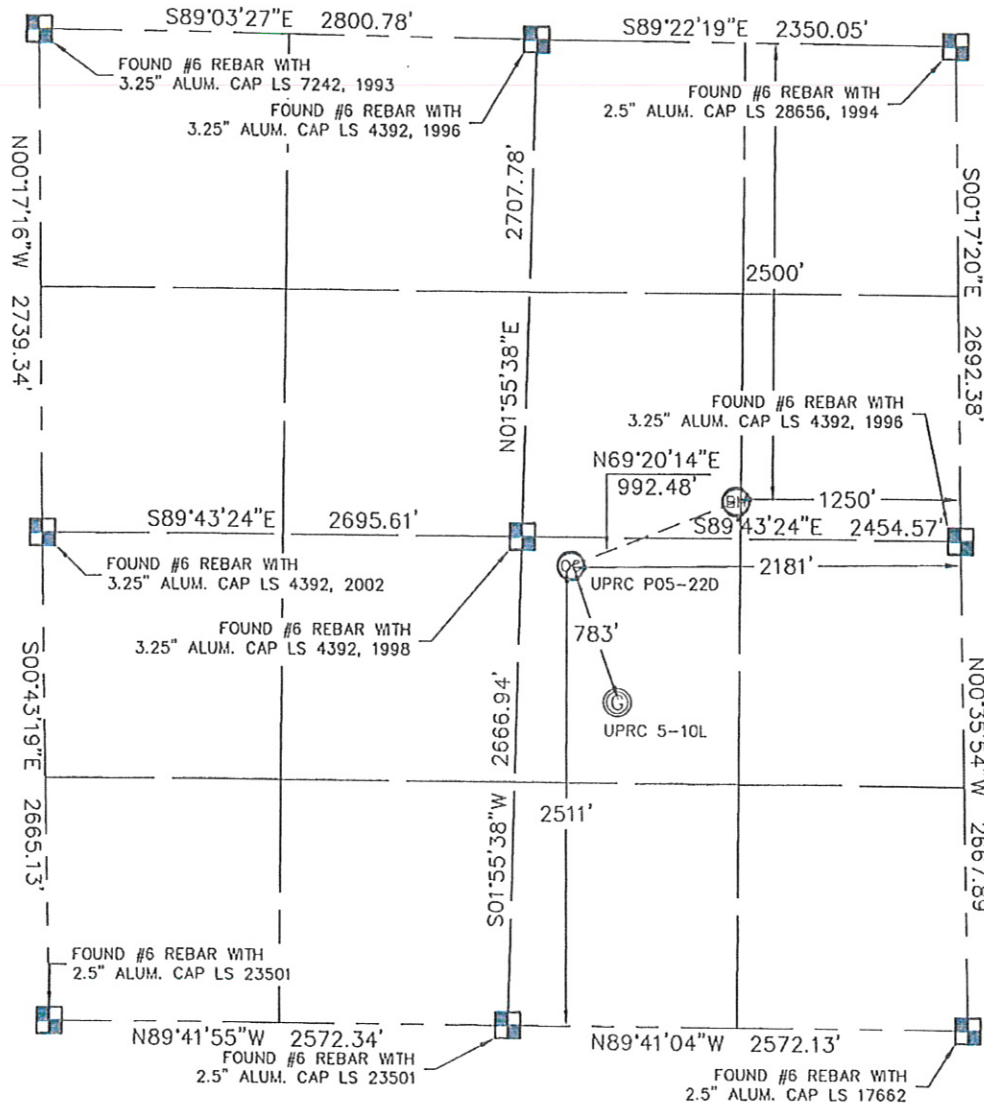


WELL LOCATION CERTIFICATE

THIS MAP DOES NOT REPRESENT A BOUNDARY SURVEY

SECTION: 5
TOWNSHIP: 3N
RANGE: 67WIn accordance with a request from Joe Martin with Noble Energy Inc.

King Surveyors Inc. has determined the surface location of the UPRC P05-220 to be 2511' from the SOUTH line and 2181' from the EAST line and the bottom hole to be 2500' from the NORTH line and 1250' from the EAST line as measured at right angles from the section line of Section 5, Township 3 North, Range 67 West of the Sixth Principal Meridian, County of Weld, State of Colorado.

I hereby state that this Well Location Certificate was prepared by me, or under my direct supervision, that the fieldwork was completed on 8-27-09, for and on behalf of Noble Energy Inc. That this is not a Land Survey Plot or an Improvement Survey Plot, and that it is not to be relied upon for establishment of fence, building, or other future improvement lines.

NOTE:

- 1) Bearings shown are Grid Bearings of the Colorado State Plane Coordinate System, North Zone, North American Datum 1983/2007. The lineal dimensions as contained herein are based upon the "U.S. Survey Foot."
- 2) Ground elevations are based on an observed GPS elevation (NAVD 1988 DATUM).
- 3) NEAREST EXISTING WELL: UPRC 5-10L 783' SOUTHEAST
- 4) IMPROVEMENTS: See VISIBLE IMPROVEMENTS exhibit for all visible improvements within 400' of well head.
- 5) SURFACE USE: CROP FIELD

SURFACE LOCATION

LATITUDE: 40.25456°N
LONGITUDE: 104.91270°W
PDOP: X
ELEV: 4875
1/4, 1/4: NW1/4SE1/4

BOTTOM HOLE



LATITUDE: 40.25550°N
LONGITUDE: 104.90936°W

NEAREST PROPERTY LINE: 155' NORTH

NOTE

According to Colorado law, you must commence any legal action based upon any defect in this W.L.C. within three years after you discover such defect. In no event, may any action based upon any defect in this survey be commenced more than ten years after the date of the certificate shown hereon. (13-80-105 C.R.S.)

LEGEND

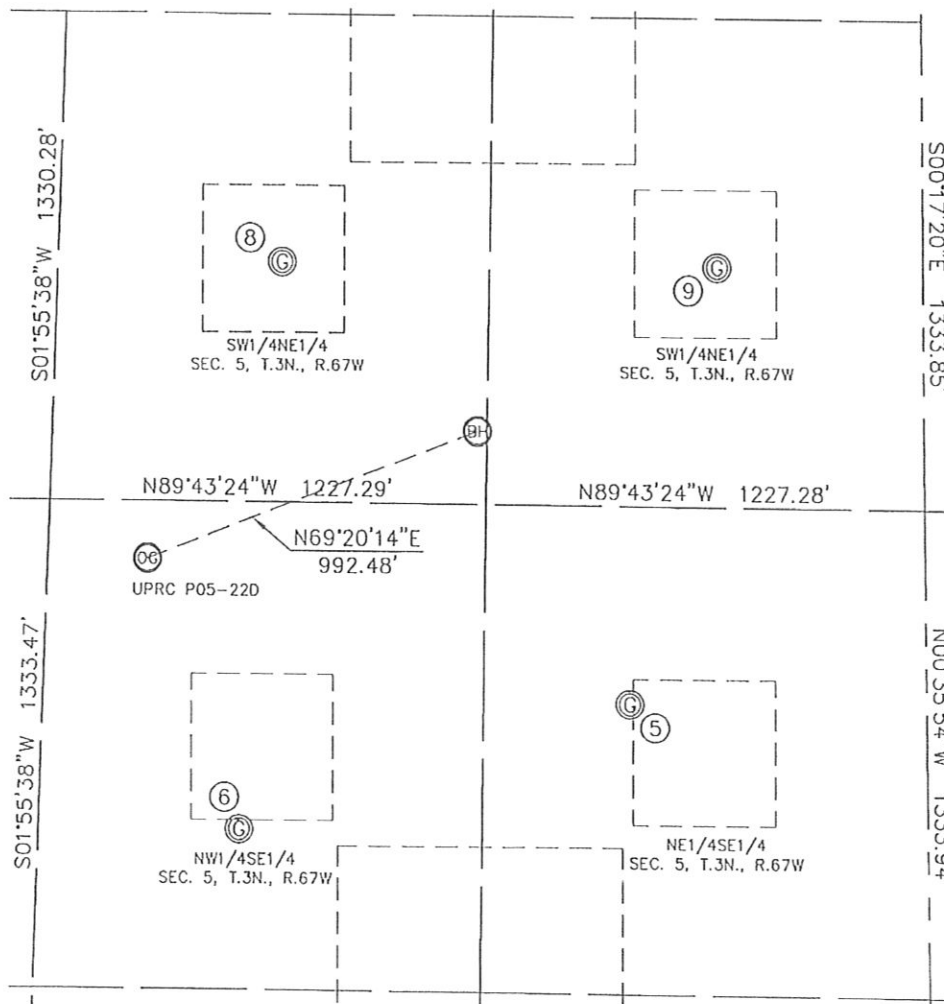
-  = ALIQUOT MONUMENT AS DESCRIBED
 = CALCULATED POSITION

Steven A. Lundgren on behalf of King Surveyors, Inc.
Licensed Land Surveyor, No. 34995
State of Colorado

PROJECT#: 2009289

KING SURVEYORS, INC. 650 E. GARDEN DR. WINDSOR, CO 80550
SITE SKETCH

SECTION: 5
 TOWNSHIP: 3N
 RANGE: 67W



⑤

UPRC 5-9L
 NE1/4SE1/4
 2131' FSL
 828' FEL
 LAT-40.25347°N
 LONG-104.90784°W
 PDOP: 1.9
 ELEV: 4880

⑥

UPRC 5-10L
 NW1/4SE1/4
 1774' FSL
 1929' FEL
 LAT-40.25253°N
 LONG-104.91178°W
 PDOP: 1.9
 ELEV: 4862

⑧

UPV 5-7J7
 SW1/4NE1/4
 2048' FNL
 1794' FEL
 LAT-40.25677°N
 LONG-104.91132°W
 PDOP: 1.2
 ELEV: 4887

⑨

UPV 5-8J7
 SW1/4NE1/4
 2041' FNL
 574' FEL
 LAT-40.25673°N
 LONG-104.90694°W
 PDOP: 1.9
 ELEV: 4898

