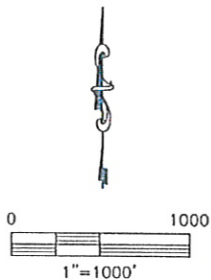
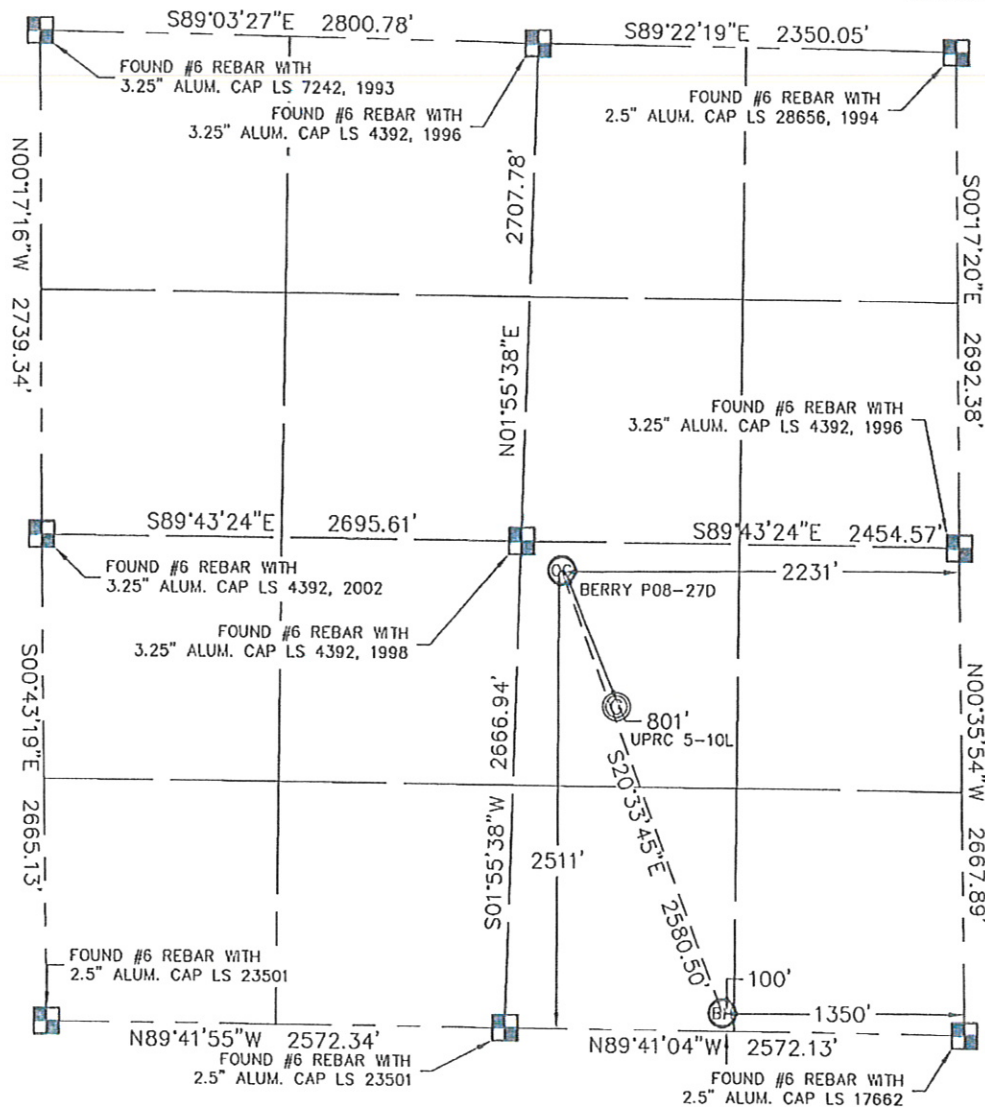


WELL LOCATION CERTIFICATE

THIS MAP DOES NOT REPRESENT A BOUNDARY SURVEY

SECTION: 5
TOWNSHIP: 3N
RANGE: 67W

In accordance with a request from Joe Martin with Noble Energy Inc., King Surveyors Inc. has determined the surface location of the BERRY P08-27D to be 2511' from the SOUTH line and 2231' from the EAST line and the bottom hole to be 100' from the SOUTH line and 1350' from the EAST line as measured at right angles from the section line of Section 5, Township 3 North, Range 67 West of the Sixth Principal Meridian, County of Weld, State of Colorado.

I hereby state that this Well Location Certificate was prepared by me, or under my direct supervision, that the fieldwork was completed on 8-27-09, for and on behalf of Noble Energy Inc. That this is not a Land Survey Plot or an Improvement Survey Plot, and that it is not to be relied upon for establishment of fence, building, or other future improvement lines.

NOTE:

- 1) Bearings shown are Grid Bearings of the Colorado State Plane Coordinate System, North Zone, North American Datum 1983/2007. The lineal dimensions as contained herein are based upon the "U.S. Survey Foot."
- 2) Ground elevations are based on an observed GPS elevation (NAVD 1988 DATUM).
- 3) NEAREST EXISTING WELL: UPRC 5-10L 801' SOUTHEAST
- 4) IMPROVEMENTS: See VISIBLE IMPROVEMENTS exhibit for all visible improvements within 400' of well head.
- 5) SURFACE USE: CROP FIELD



SURFACE LOCATION
LATITUDE: 40.25456°N
LONGITUDE: 104.91287°W
PDOP: 2.1
ELEV: 4875
1/4, 1/4: NW1/4SE1/4
NEAREST PROPERTY LINE: 155' NORTH

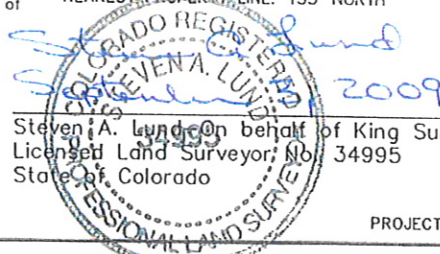
BOTTOM HOLE
LATITUDE: 40.24791°N
LONGITUDE: 104.90969°W

NOTE

According to Colorado law, you must commence any legal action based upon any defect in this W.L.C. within three years after you discover such defect. In no event, may any action based upon any defect in this survey be commenced more than ten years after the date of the certificate shown hereon. (13-80-105 C.R.S.)

LEGEND

-  = ALIQUOT MONUMENT AS DESCRIBED
 = CALCULATED POSITION



Steven A. Lundgren on behalf of King Surveyors, Inc.
Licensed Land Surveyor, No. 34995
State of Colorado

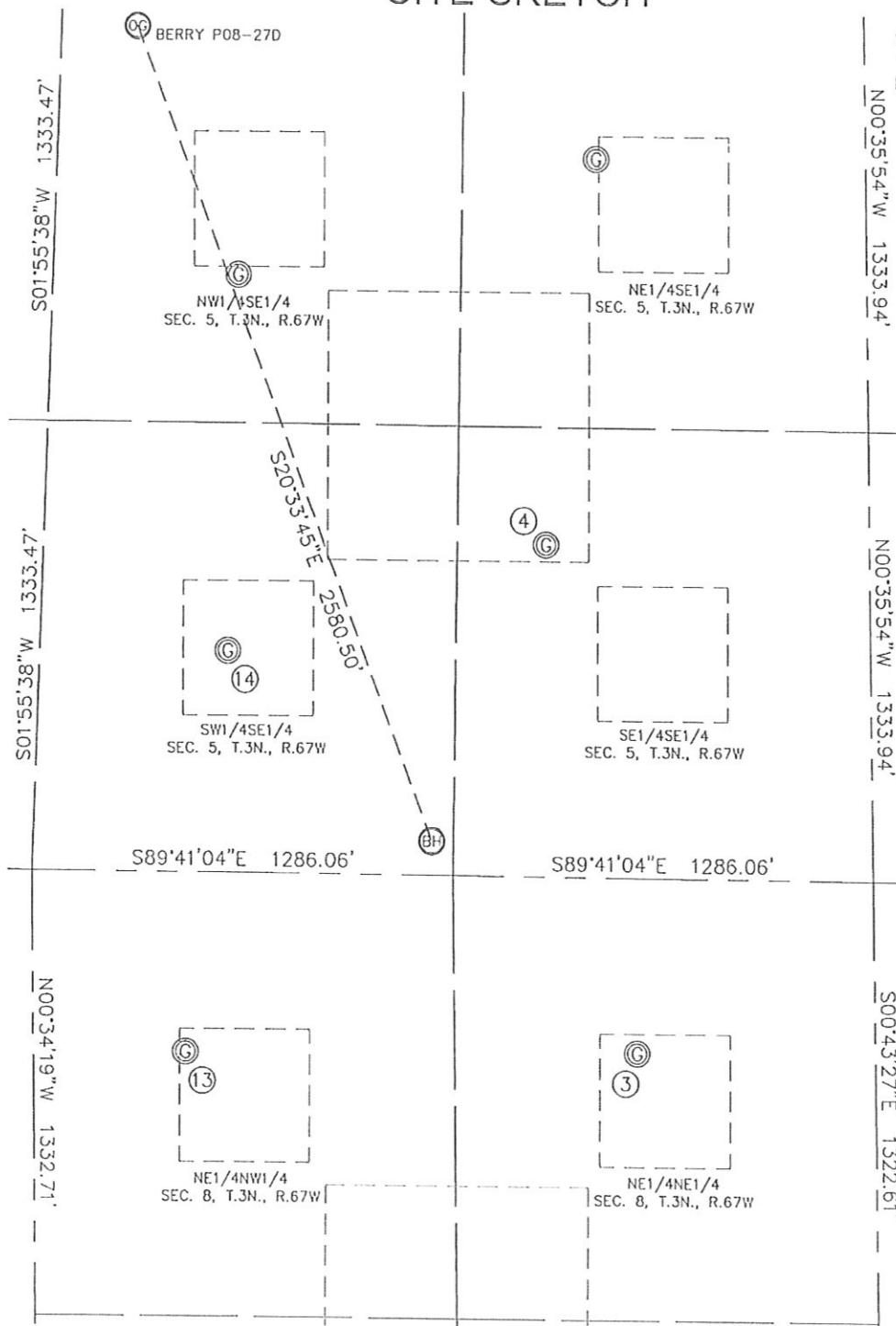
PROJECT#: 2009289

KING SURVEYORS, INC.

650 E. GARDEN DR. WINDSOR, CO 80550

SITE SKETCH

SECTION: 5
TOWNSHIP: 3N
RANGE: 67W



③

BERRY 41-8
NE1/4NE1/4
522' FNL
727' FEL
LAT-40.24619'N
LONG-104.90744'W
PDOP: 1.6
ELEV: 4833

④

JEFFERS 3-5
SE1/4SE1/4
986' FSL
992' FEL
LAT-40.25033'N
LONG-104.90841'W
PDOP: 1.9
ELEV: 4855

⑬

HSR-BERRY 2-8
NW1/4NE1/4
535' FNL
2111' FEL
LAT-40.24620'N
LONG-104.91240'W
PDOP: 1.9
ELEV: 4830

⑭

UPRC 5-15L
SW1/4SE1/4
659' FSL
1969' FEL
LAT-40.24947'N
LONG-104.91191'W
PDOP: 1.4
ELEV: 4848

