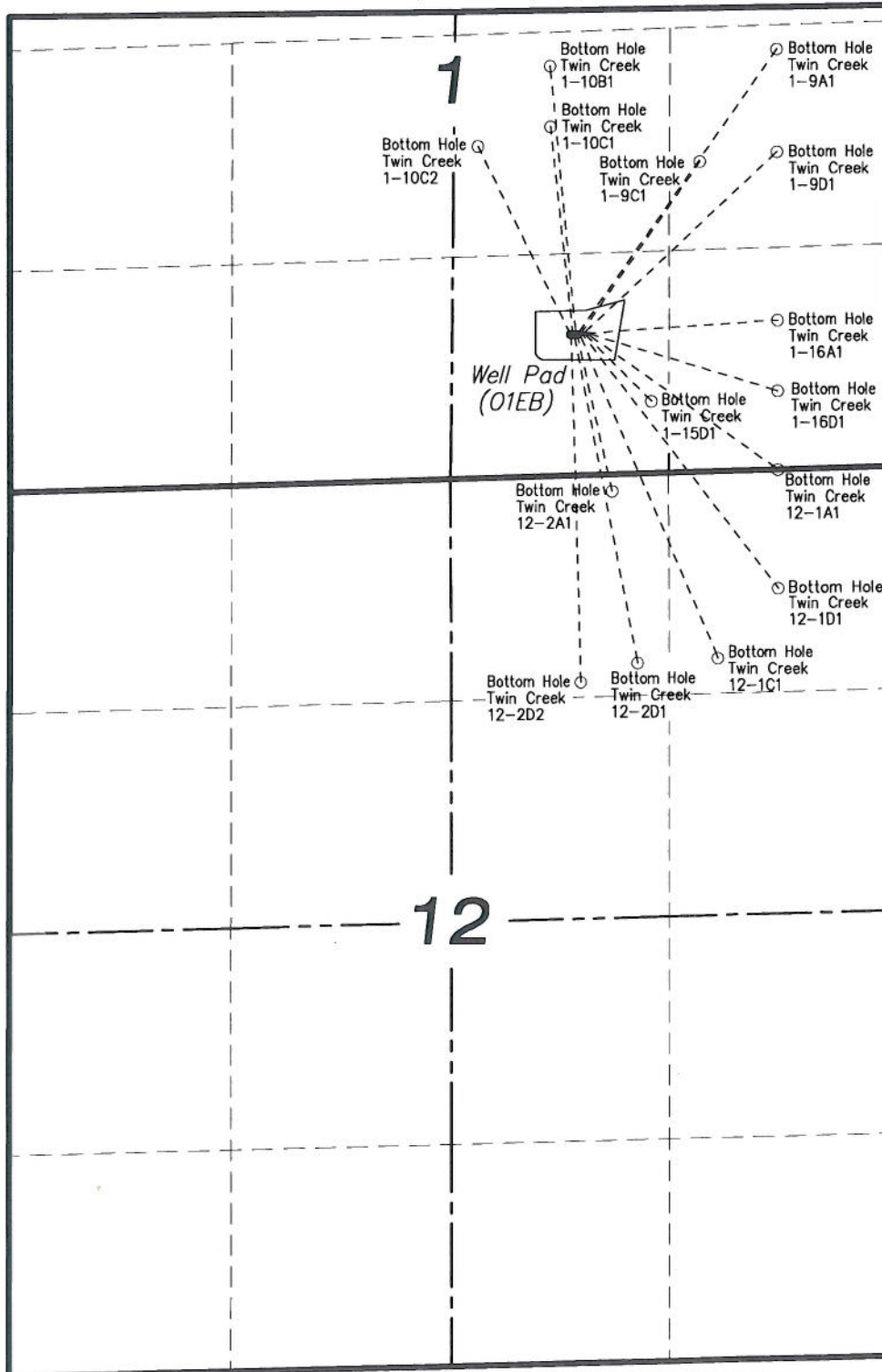
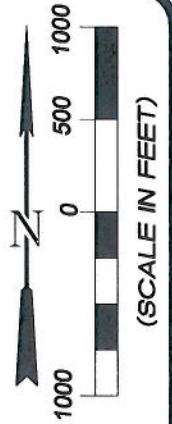


**MULTI-WELL PLAN**  
**EnCana Oil & Gas (USA) Inc.**  
**Well Pad (O1EB)**  
**Sections 1 & 12**  
**T7S, R92W, 6th P.M.**



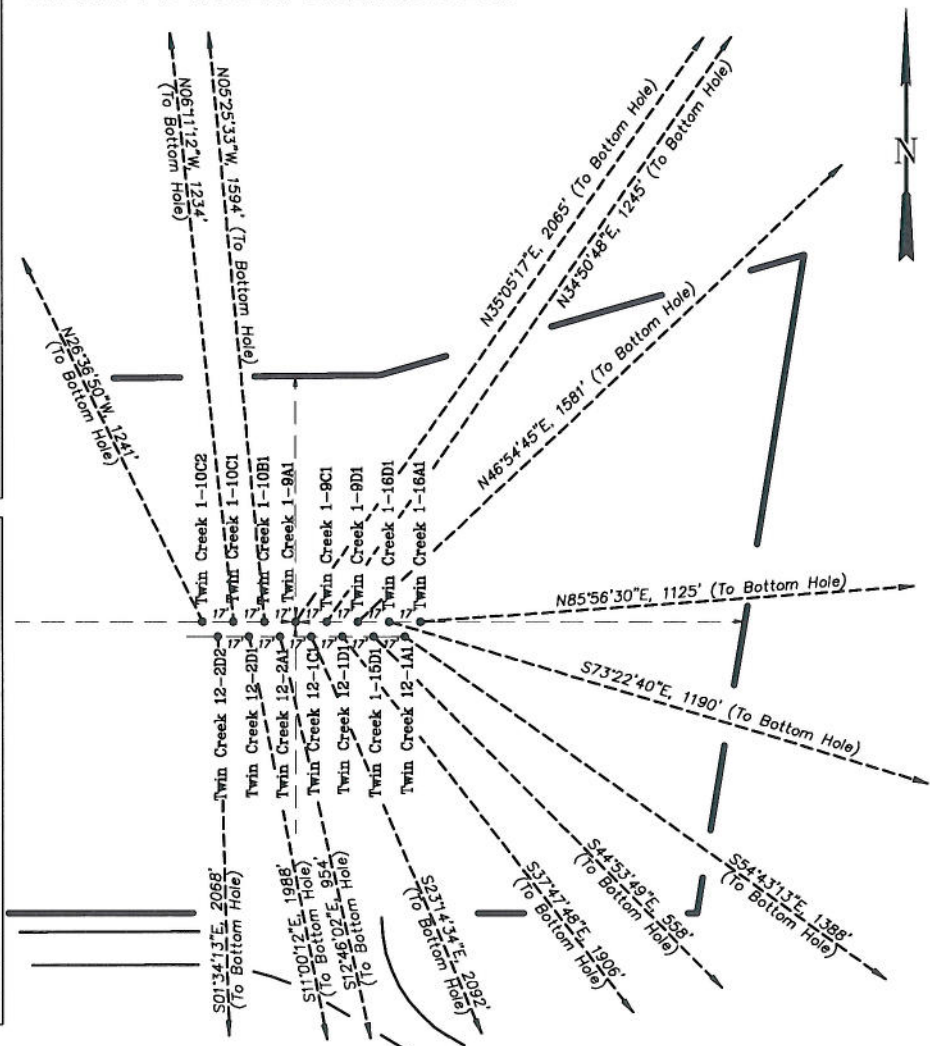
906 Main Street  
 Evanston, Wyoming 82930  
 Phone No. (307) 789-4545

Multi-Well Plan		Scale: 1" = 1000'	SHEET
Project No.	08-04-51	Date Surveyed: 08/13/08	1
Date Drawn:	12/21/09	Latest Revision Date: 2/02/10	OF 10

**EnCana Oil & Gas (USA) Inc.**  
**Well Pad (O1EB)**  
**Section 1, T7S, R92W, 6th P.M.**  
**WELL PAD INTERFERENCE PLAT**

RELATIVE COORDINATES From top hole to bottom hole		
WELL	NORTH	EAST
1-10C2	1110	-556
1-10C1	1227	-133
1-10B1	1587	-151
1-9A1	1690	1187
1-9C1	1022	711
1-9D1	1080	1155
1-16D1	-340	1140
1-16A1	80	1122
12-2D2	-2067	57
12-2D1	-1951	379
12-2A1	-930	211
12-1C1	-1922	826
12-1D1	-1506	1168
1-15D1	-395	394
12-1A1	-802	1133

LATITUDE & LONGITUDE Surface position of Wellheads (NAD 83)		
WELL	LATITUDE	LONGITUDE
1-10C2	39.47145°	107.61261°
1-10C1	39.47145°	107.61255°
1-10B1	39.47145°	107.61249°
1-9A1	39.47145°	107.61243°
1-9C1	39.47145°	107.61237°
1-9D1	39.47145°	107.61231°
1-16D1	39.47145°	107.61225°
1-16A1	39.47145°	107.61219°
12-2D2	39.47143°	107.61258°
12-2D1	39.47143°	107.61252°
12-2A1	39.47143°	107.61246°
12-1C1	39.47143°	107.61240°
12-1D1	39.47143°	107.61234°
1-15D1	39.47143°	107.61228°
12-1A1	39.47143°	107.61222°



**TOP HOLE FOOTAGES**

TWIN CREEK 1-10C2 (O1EB)  
846' FSL & 1902' FEL  
TWIN CREEK 1-10C1 (O1EB)  
846' FSL & 1885' FEL  
TWIN CREEK 1-10B1 (O1EB)  
845' FSL & 1868' FEL  
TWIN CREEK 1-9A1 (O1EB)  
845' FSL & 1851' FEL  
TWIN CREEK 1-9C1 (O1EB)  
844' FSL & 1834' FEL  
TWIN CREEK 1-9D1 (O1EB)  
844' FSL & 1817' FEL  
TWIN CREEK 1-16D1 (O1EB)  
843' FSL & 1800' FEL  
TWIN CREEK 1-16A1 (O1EB)  
843' FSL & 1783' FEL

TWIN CREEK 12-2D2 (O1EB)  
838' FSL & 1893' FEL  
TWIN CREEK 12-2D1 (O1EB)  
837' FSL & 1876' FEL  
TWIN CREEK 12-2A1 (O1EB)  
837' FSL & 1859' FEL  
TWIN CREEK 12-1C1 (O1EB)  
836' FSL & 1842' FEL  
TWIN CREEK 12-1D1 (O1EB)  
836' FSL & 1825' FEL  
TWIN CREEK 1-15D1 (O1EB)  
835' FSL & 1808' FEL  
TWIN CREEK 12-1A1 (O1EB)  
835' FSL & 1791' FEL

**BOTTOM HOLE FOOTAGES**

TWIN CREEK 1-10C2 (O1EB)  
800' FNL & 2455' FEL SEC. 1  
TWIN CREEK 1-10C1 (O1EB)  
690' FNL & 2015' FEL SEC. 1  
TWIN CREEK 1-10B1 (O1EB)  
330' FNL & 2015' FEL SEC. 1  
TWIN CREEK 1-9A1 (O1EB)  
250' FNL & 660' FEL SEC. 1  
TWIN CREEK 1-9C1 (O1EB)  
910' FNL & 1120' FEL SEC. 1  
TWIN CREEK 1-9D1 (O1EB)  
860' FNL & 660' FEL SEC. 1  
TWIN CREEK 1-16D1 (O1EB)  
2280' FNL & 660' FEL SEC. 1  
TWIN CREEK 1-16A1 (O1EB)  
1860' FNL & 660' FEL SEC. 1

TWIN CREEK 12-2D2 (O1EB)  
1230' FNL & 1840' FEL SEC. 12  
TWIN CREEK 12-2D1 (O1EB)  
1125' FNL & 1500' FEL SEC. 12  
TWIN CREEK 12-2A1 (O1EB)  
100' FNL & 1650' FEL SEC. 12  
TWIN CREEK 12-1C1 (O1EB)  
1110' FNL & 1020' FEL SEC. 12  
TWIN CREEK 12-1D1 (O1EB)  
705' FNL & 660' FEL SEC. 12  
TWIN CREEK 1-15D1 (O1EB)  
2330' FNL & 1415' FEL SEC. 1  
TWIN CREEK 12-1A1 (O1EB)  
1' FNL & 660' FEL SEC. 12



(SCALE IN FEET)

906 Main Street  
Evanston, Wyoming 82930  
Phone No. (307) 789-4545



Interference Plat		Scale: 1" = 100'	SHEET
Project No.	08-04-51	Date Surveyed: 08/13/08	2
Date Drawn:	12/16/09	Latest Revision Date: 2/02/10	OF 10