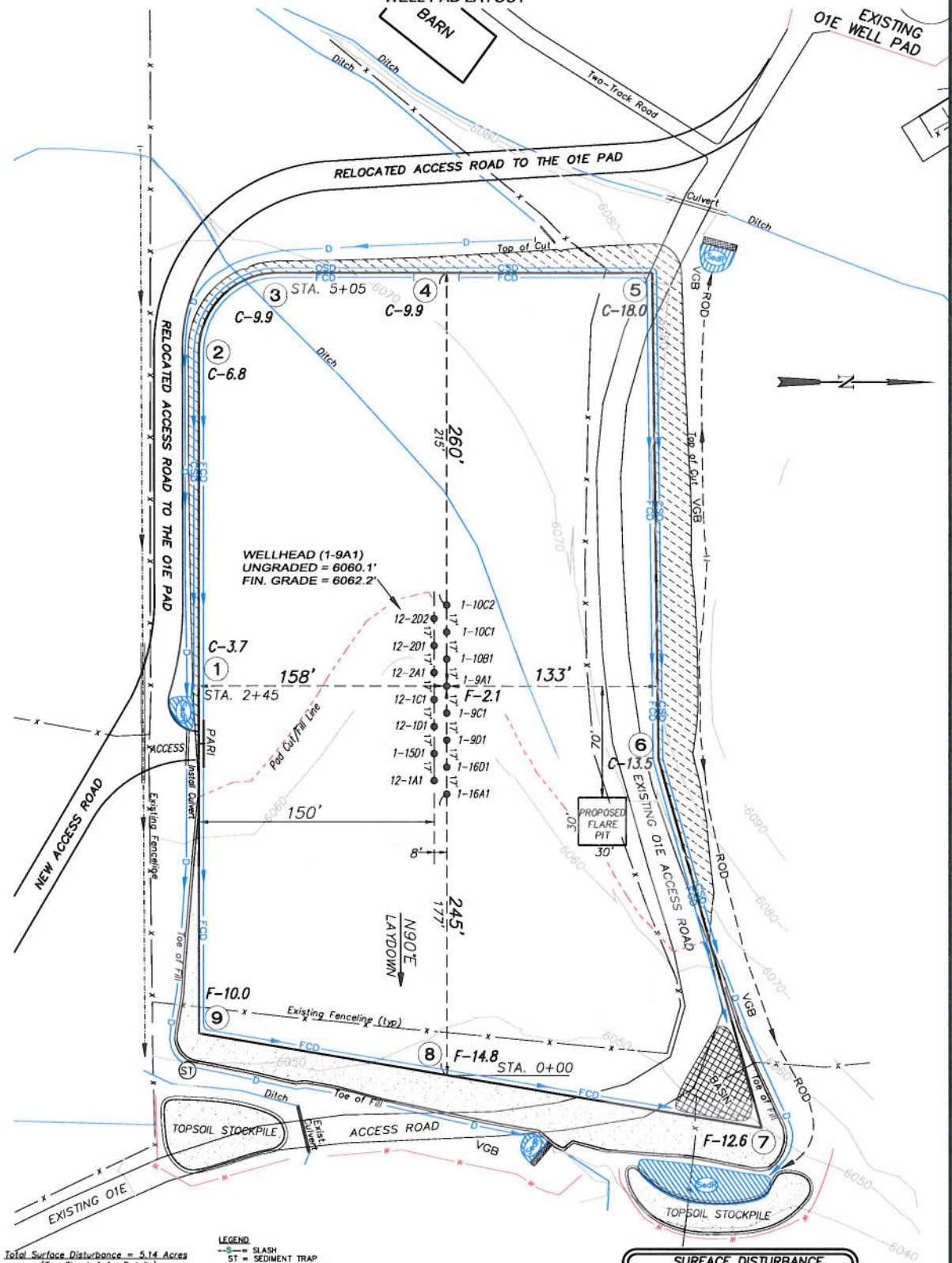


EnCana Oil & Gas (USA) Inc.

O1EB Well Pad

SW1/4 SE1/4, SECTION 1, T 7 S, R 92 W, 6th P.M.

WELL PAD LAYOUT



Total Surface Disturbance = 5.14 Acres
(See Sheet 4 for Details)

NOTES:

- (1) Slope Track and/or Terrace at Slopes and Piles
- (2) Erosion Control & Seed Topsoil
- (3) Erosion Control & Seed Outside
- (4) Slope away from Substructure Areas 1% to 3% to Flow Control

LEGEND:

- SLASH = SLASH
- ST = SEDIMENT TRAP
- SedR = SEDIMENT RESERVOIR
- R.O.D. = RUN-ON DIVERSION
- PERM = PERIMETER CONTROL (WATILES)
- CSD = CUT SLOPE DIVERSION (BERM TOE OF CUT SLOPE)
- FCD = FILL DIVERSION TO SEDIMENT TRAP
- VCB = VEGETATION BUFFER (UNDISTURBED LAND INSIDE PC)
- FCD = FLOW CONTROL DITCH
- PARI = PAD/ACCESS ROAD INTERFACE
- LEVEL SPREADER
- TOE BERM (PLACED AT TOE OF ALL FILL SLOPES/STOCKPILES)
- TOPSOIL BERM
- SEED, ECB & FLEX
- SEED

SURFACE DISTURBANCE (IN ACRES)

Well Pad	3.5
Side Slopes	0.6
Topsoil & Waste Material	1.04
TOTAL	5.14



906 Main Street
Evanston, Wyoming 82930
Phone No. (307) 789-4545



Well Pad Layout

Project No. 08-04-51
Date Drawn: 12/16/09

Scale: 1" = 60'

Date Surveyed: 08/13/08
Latest Revision: 2/02/10

SHEET

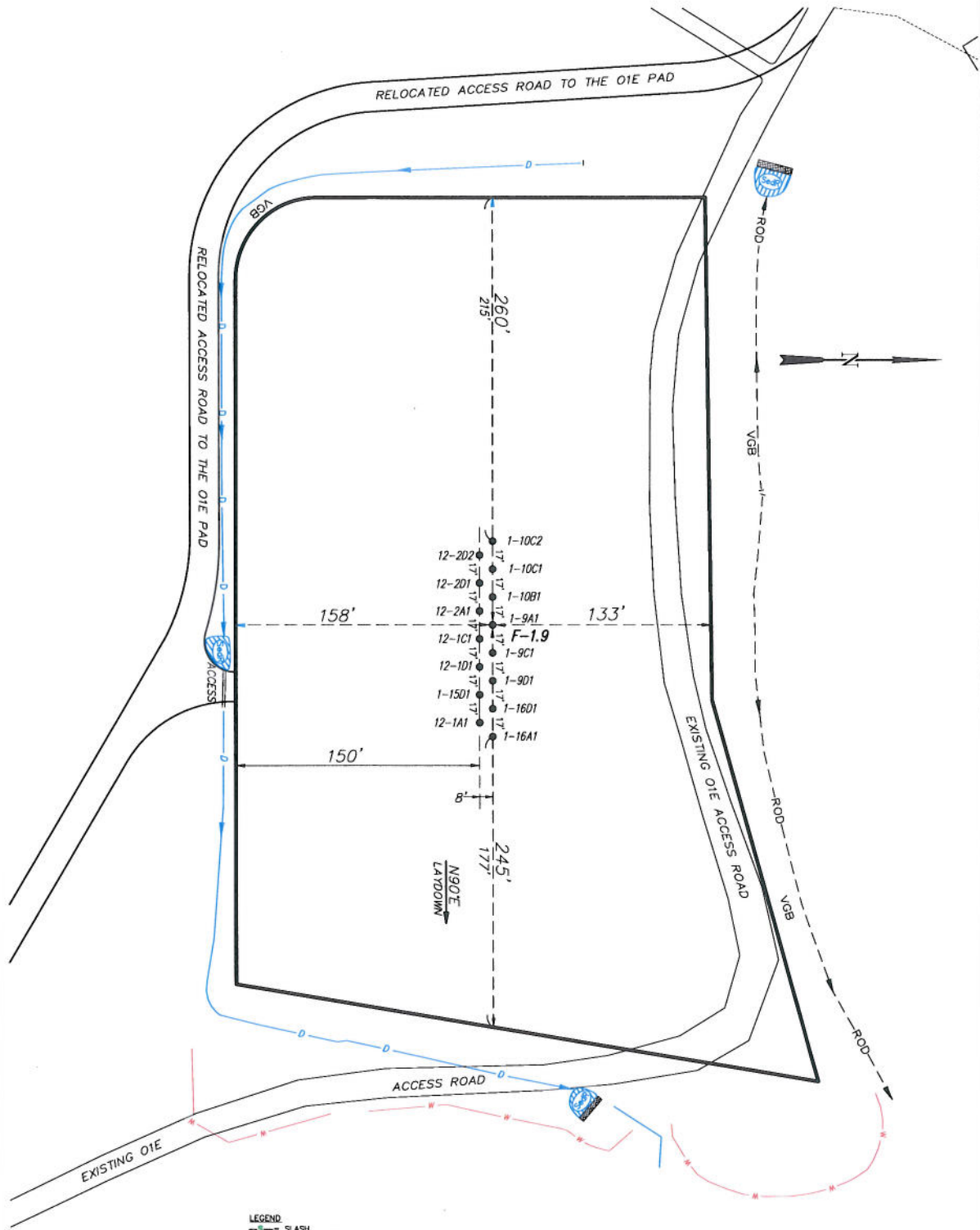
3
OF 10

EnCana Oil & Gas (USA) Inc.

O1EB Well Pad

SW1/4 SE1/4, SECTION 1, T 7 S, R 92 W, 6th P.M.

PRE-CONSTRUCTION PLAT



Total Surface Disturbance = 5.14 Acres
(See Sheet 4 for Details)

NOTES:

- (1) Slope Track and/or Terrace all Slopes and Piles
- (2) Erosion Control & Seed Topsoil
- (3) Erosion Control & Seed Outside
- (4) Slope away from Substructure Areas 1% to 3% to Flow Control

LEGEND

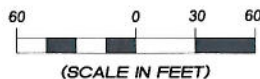
- SLASH
- ST = SEDIMENT TRAP
- SedR = SEDIMENT RESERVOIR
- R.O.D. = RUN-ON DIVERSION
- PC = PERIMETER CONTROL (WATTLES)
- CSD = CUT SLOPE DIVERSION (BERM TOE OF CUT SLOPE)
- D = FILL DIVERSION TO SEDIMENT TRAP
- VGB = VEGETATION BUFFER (UNDISTURBED LAND INSIDE PC)
- FCD = FLOW CONTROL DITCH
- PARI = PAD/ACCESS ROAD INTERFACE
- LEVEL SPREADER
- TOE BERM (PLACED AT TOE OF ALL FILL SLOPES/STOCKPILES)
- TOPSOIL BERM
- SEED, ECB & FLEX
- SEED

PRE-CONSTRUCTION PHASE COMPLETE,
AUTHORIZATION TO CONTINUE
CONSTRUCTION.

SIGNATURE: _____



906 Main Street
Evanston, Wyoming 82930
Phone No. (307) 789-4545



Pre-Construction

Project No. 08-04-51
Date Drawn: 12/16/09

Scale: 1" = 60'

Date Surveyed: 08/13/08
Latest Revision Date: 2/02/10

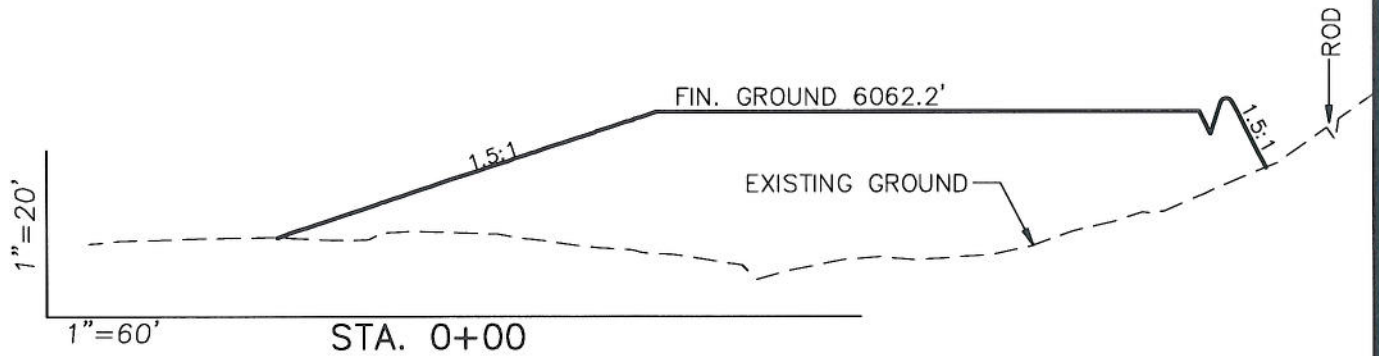
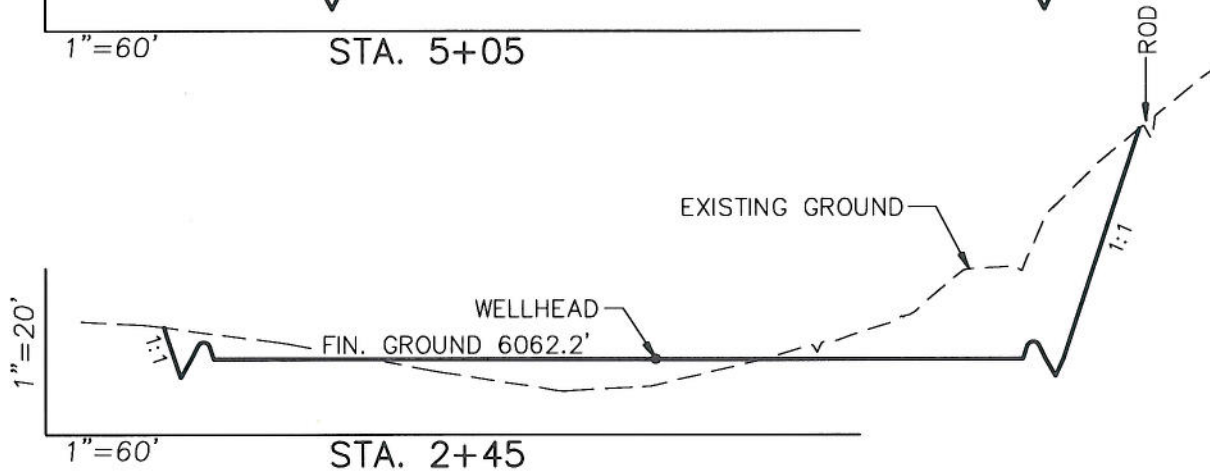
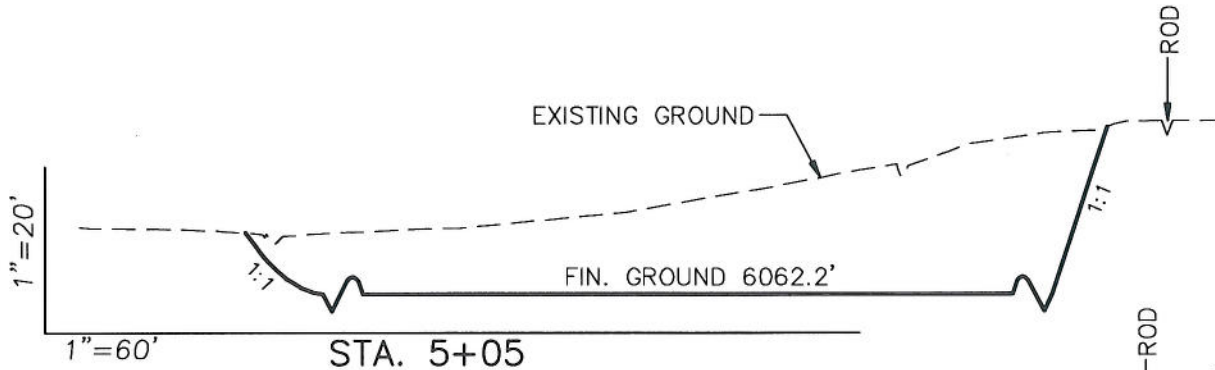
SHEET

3a
OF 10

EnCana Oil & Gas (USA) Inc.

Well Pad (O1EB)

CROSS SECTIONS



SURFACE DISTURBANCE (IN ACRES)

Well Pad	3.5
Side Slopes	0.6
Topsoil & Waste Material	1.04
TOTAL	5.14

NOTE:
ALL CUT SLOPES ARE
AT 1:1 AND FILL
SLOPES ARE AT 1.5:1
UNLESS OTHERWISE
NOTED.

EARTHWORK QUANTITIES

(in Cubic Yards w/ 0% shrink/swell)

ITEM	CUT	FILL	6" TOPSOIL	EXCESS
PAD	21064	20571	Topsoil not included in Excavation	493
PIT	0	0		0
TOTALS	21064	20571	3287	493



906 Main Street
Evanston, Wyoming 82930
Phone No. (307) 789-4545

Cross Sections

Project
No. 08-04-51
Date
Drawn: 12/16/09

Scale: As Shown

Date
Surveyed: 08/13/08
Latest Revision
Date: 2/02/10

SHEET

4
OF 10