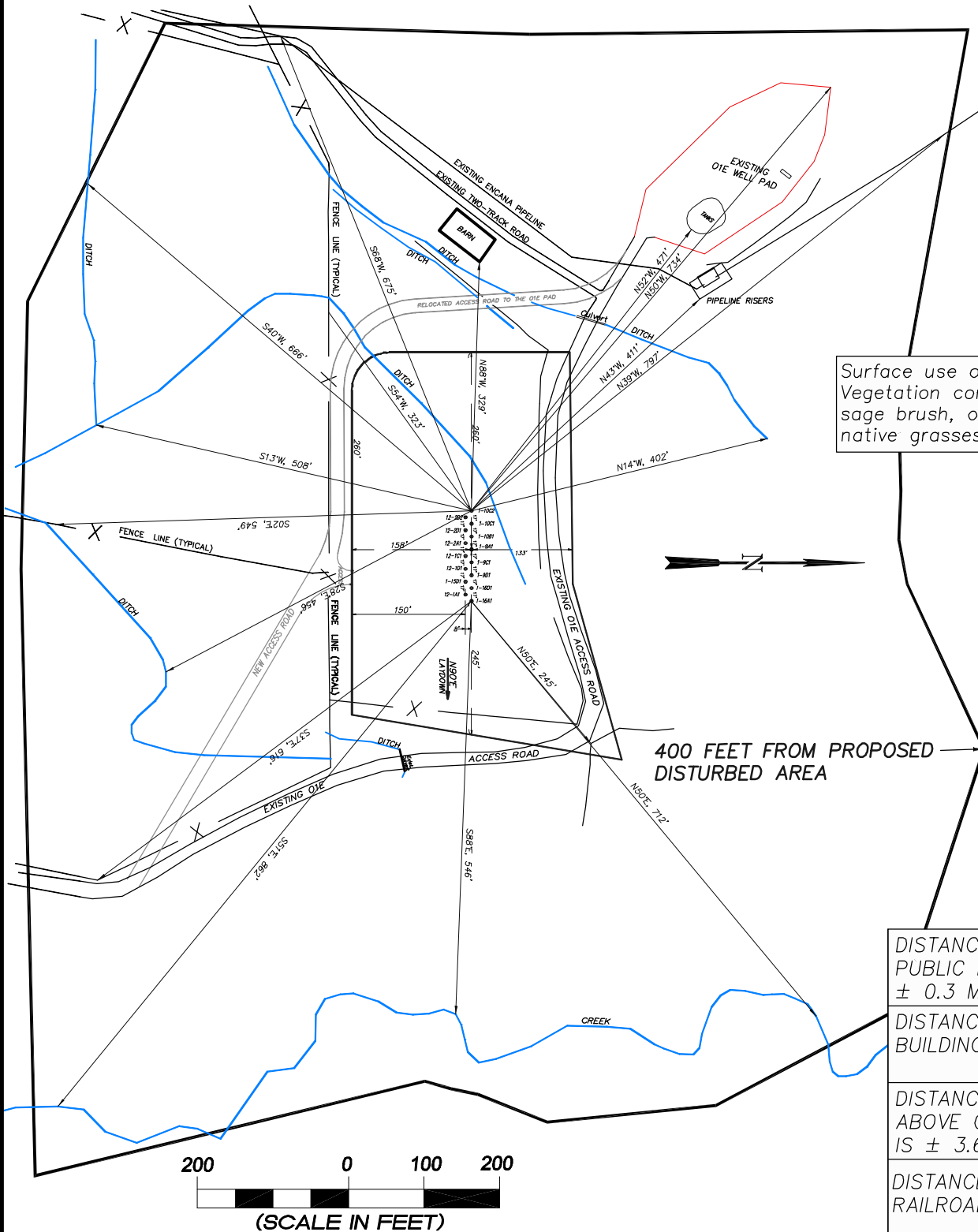


EnCana Oil & Gas (USA) Inc.
ADDENDUM TO LEGAL PLATS FOR
O1EB Well Pad
SECTION 1, T 7 S, R 92 W, 6th P.M.



DISTANCE TO NEAREST PUBLIC ROAD IS ± 0.3 MILES.

DISTANCE TO NEAREST BUILDING (BARN) $\pm 329'$

DISTANCE TO NEAREST ABOVE GROUND UTILITY IS ± 3.6 MILES.

DISTANCE TO NEAREST RAILROAD IS ± 5 MILES.



906 Main Street
 Evanston, Wyoming 82930
 Phone No. (307) 789-4545

Addendum		Scale: 1" = 200'	SHEET 1p OF 10
Project No.	08-04-51	Date Surveyed: 08/13/08	
Date	12/16/09	Latest Revision	
Drawn:	12/16/09	Date: 2/02/10	