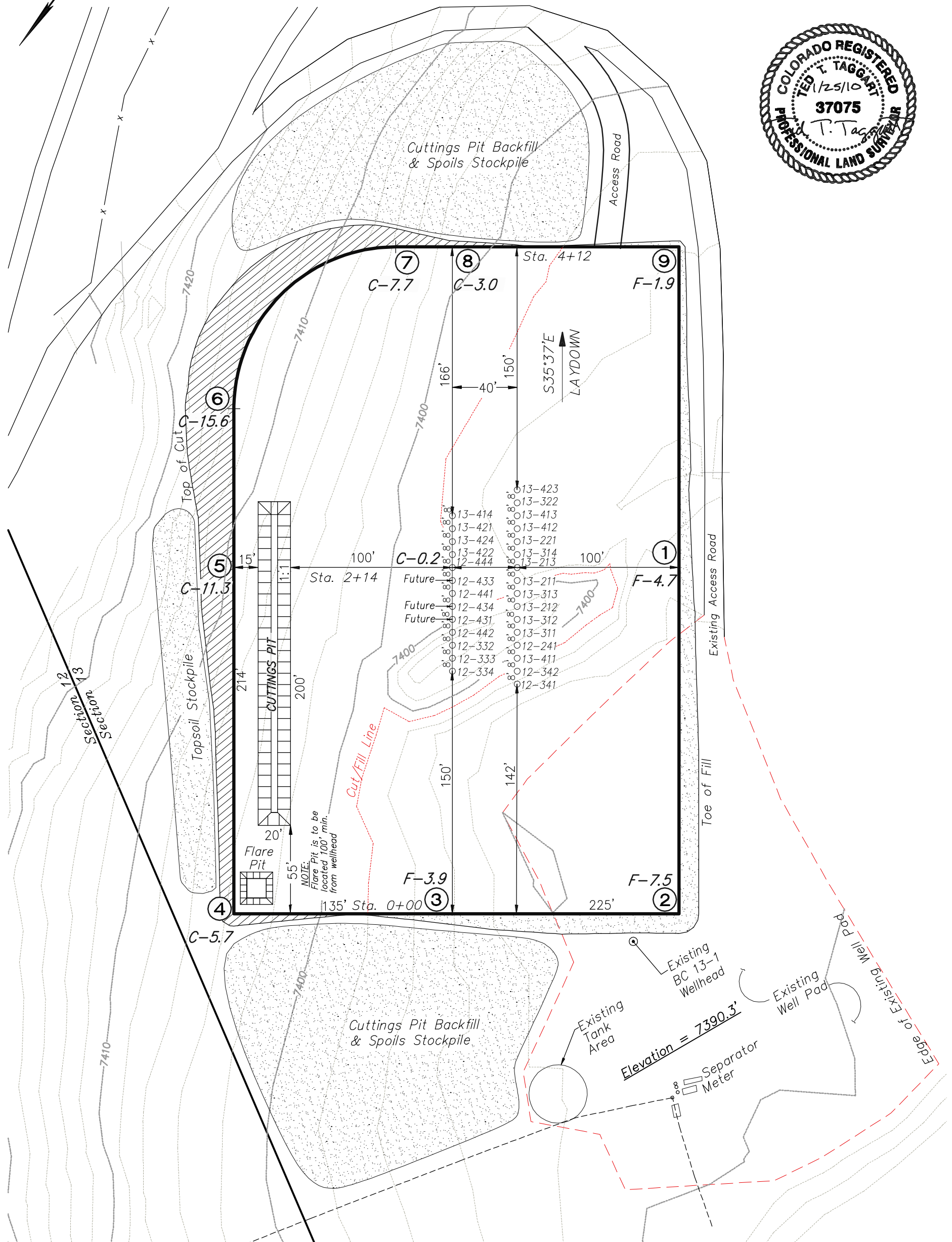
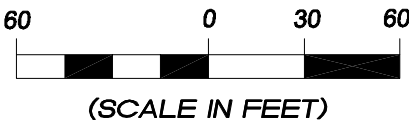


Delta Petroleum Corporation
LOCATION LAYOUT FOR
BCU 13A PAD
SECTION 13, T9S, R93W, 6th P.M.



NOTES:

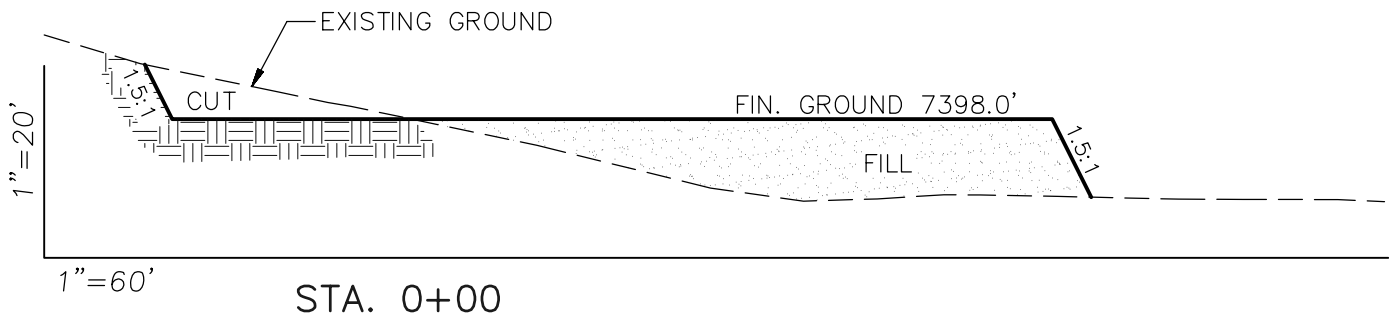
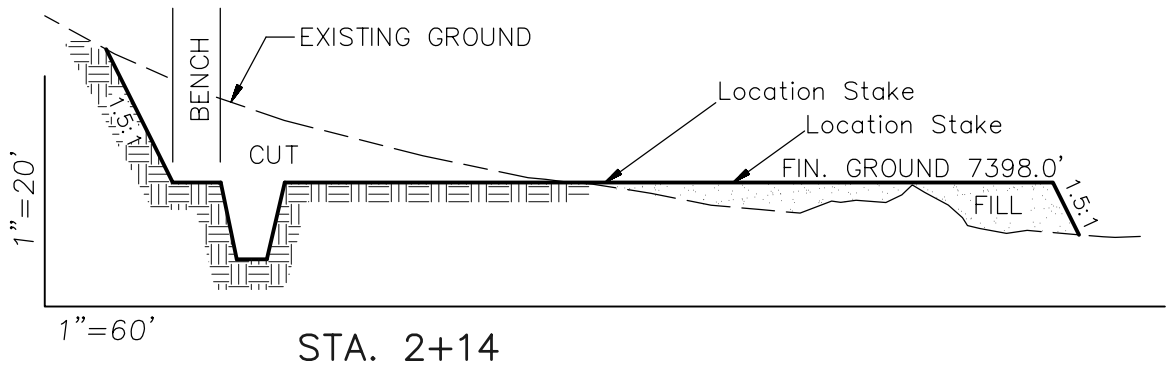
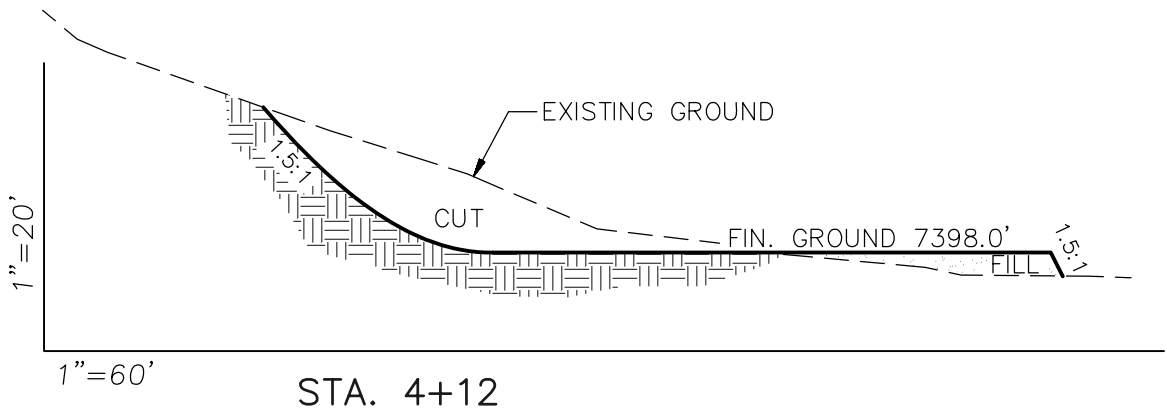
Elev. Ungraded Ground At Loc. Stake = 7398.2'
FINISHED GRADE ELEV. AT LOC. STAKE = 7398.0'



906 Main Street
Evanston, Wyoming 82930
Phone No. (307) 789-4545

Well Pad Layout		Scale: As Shown	SHEET 6
Project No.	08-07-03	Date Surveyed: 4/08/08	
Date	10/14/08	Latest Revision	
Drawn:		Date: 1/25/10	

Delta Petroleum Corporation
LOCATION LAYOUT FOR
BCU 13A PAD
SECTION 13, T9S, R93W, 6th P.M.



APPROXIMATE YARDAGES

CUT	
(6") Topsoil Stripping	= 2344 Cu. Yds.
Remaining Location	= 11,076 Cu. Yds.
TOTAL CUT	= 13,420 CU. YDS.
FILL	= 10,080 CU. YDS.

EXCESS MATERIAL	= 3340 Cu. Yds.
EXCESS UNBALANCE	= 0 Cu. Yds.
(After Interim Rehabilitation)	

APPROXIMATE ACREAGES

APPROX. WELL DISTURBANCE	= ±4.25 ACRES
ACCESS ROAD DISTURBANCE	= ±0.1 ACRES
TOTAL	= ±4.3 ACRES

NOTE:

ALL CUT AND FILL SLOPES ARE
AT 1.5:1 UNLESS OTHERWISE NOTED.



906 Main Street
Evanston, Wyoming 82930
Phone No. (307) 789-4545

Cross Sections		Scale: As Shown	SHEET 7
Project No.	08-07-03	Date Surveyed: 4/08/08	
Date Drawn:	10/14/08	Latest Revision Date: 1/25/10	