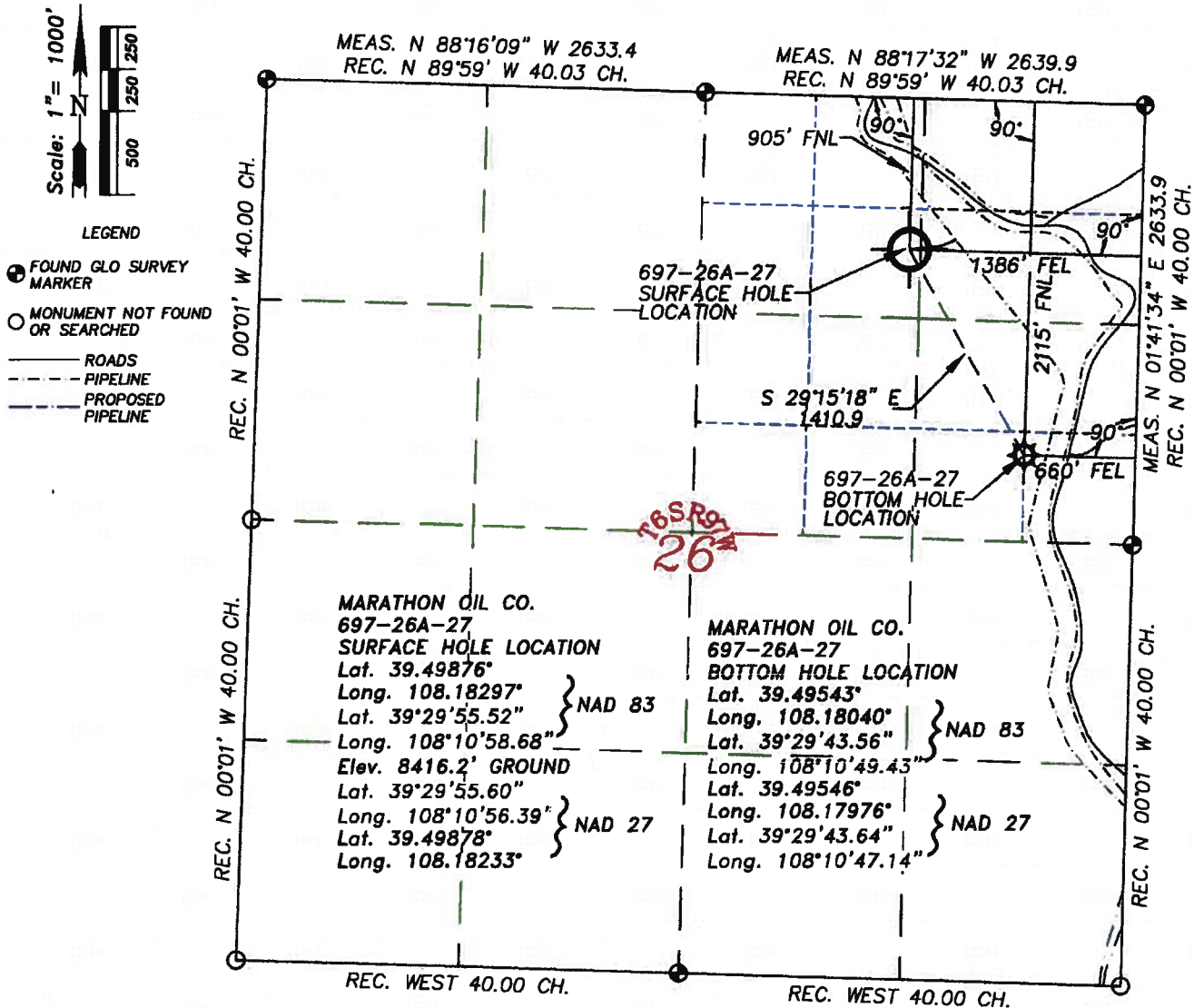


WILLIAM H. SMITH & ASSOCIATES P.C.
SURVEYING CONSULTANTS
T 6 S R 97 W

P.O. BOX 820
GREEN RIVER, WYOMING 82935

550 EAST 2ND NORTH
PH. 307-875-3638
FAX. 307-875-3640

PLAT FOR SURFACE & BOTTOM HOLE LOCATION



I, William H. Dolinar of Green River, Wyoming hereby certify that in accordance with a request from Frank Krugh for Marathon Oil Company, 5555 San Felipe, Houston, TX 77056. I and or personnel under my direction made a survey on the 12th day of February 2010, for the Surface Hole Location and Elevation of Marathon Oil Company, Well #697-26A-27 being located within the SE/4NW/4NE/4 of Section 26, and the Bottom Hole Location being located within the S/2SE/4NE/4 of Section 26, T 6 S, R 97 W, of the 6th Principal Meridian, Garfield County, State of Colorado, as shown on the above Section Map.

Surface Hole Elevation of ungraded ground = 8416.2 feet.

Note: All bearings are grid bearings of the Colorado State Plane Coordinate System, Central Zone, North American Datum 1983. The basis of grid bearing, from GPS observation, is a line between NGS triangulation station SHALE-PID KM0282 (A standard bronze disk in a boulder 4" below ground) and NGS triangulation station PARACHUTE-PID KM0260 (A standard bronze disk in a boulder flush with ground). That bearing being N 25°49'25" W. Vertical Datum based on NAVD 88 Triangulation Station SHALE.

Ground Distances shown using a combined scale factor of 1.000446031

Note: Record bearings as shown are based on the General Land Office Survey, as approved on February 24, 1921.



JOB NO. 26099
02/12/2010 CED
PAD 697-26A/PAD 697-26A PLATS.dwg

LEICA GPS GDOF OF 2.0 ON 02/12/2010
IMPROVEMENTS: PIPELINE
SURFACE USE: GRADING: SCRUB OAK
AND NATURAL GROUND

697-26A-27
SHEET 1 OF 1

~SEAL~