

BERRY PETROLEUM COMPANY

BOTTOM HOLE FOOTAGES FOR

WELL PAD E22 697

SECTION 22, T6S, R97W, 6th P.M.

SW 1/4 NW 1/4

400' 200' 0' 400'



SCALE

Sheet 6 of 12

DATE: 09-01-09

Drawn By: C.H.

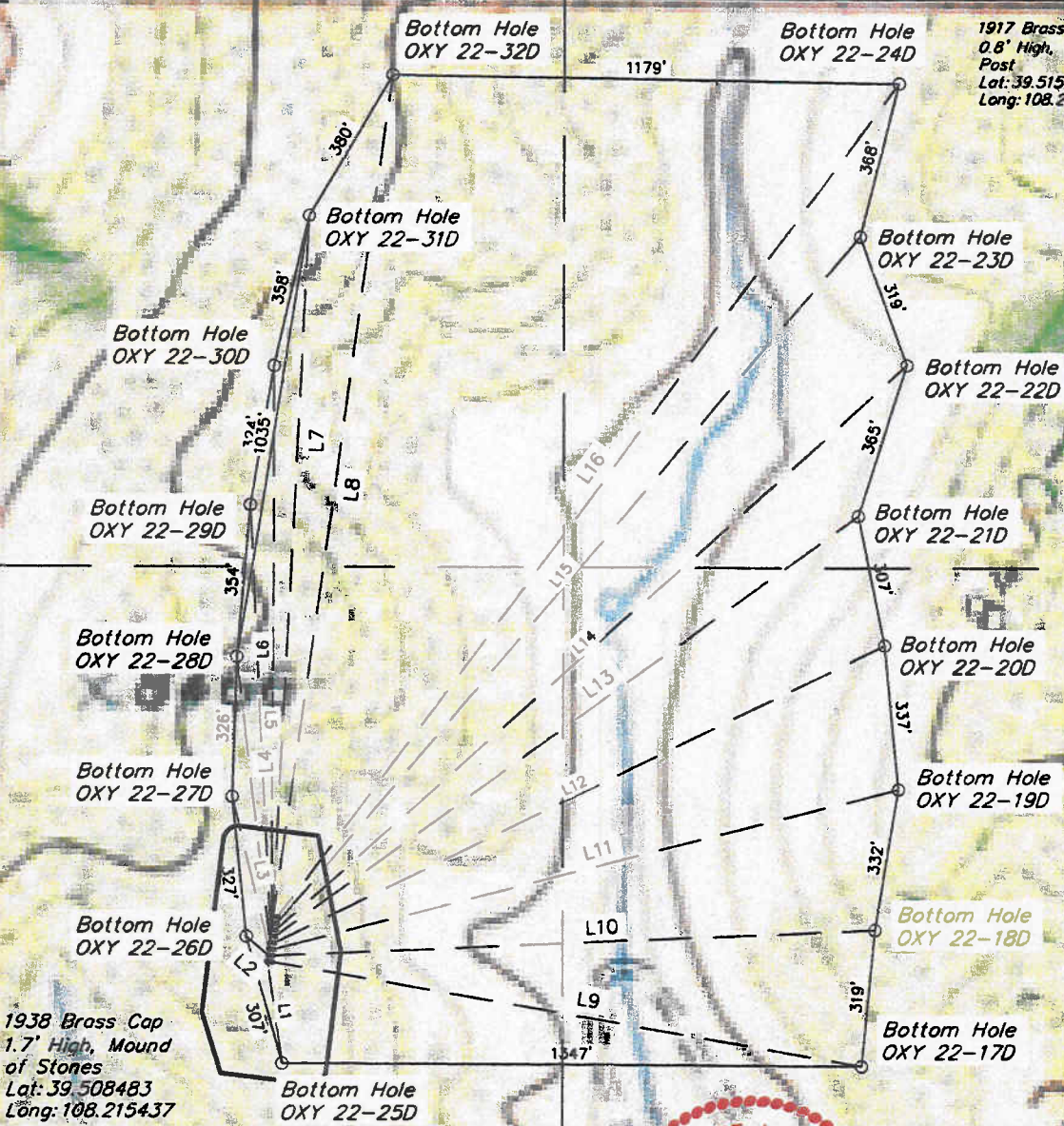
REV: 10-05-09

N89°58'38"W - 2641.00' (Meas.)

1917 Brass Cap
1.0' High, Steel
Post
Lat: 39.515730
Long: 108.215446

1917 Brass Cap
0.8' High, Steel
Post
Lat: 39.515735
Long: 108.206188

N00°00'36"E - 2640.50' (Meas.)



1938 Brass Cap
1.7' High, Mound
of Stones
Lat: 39.508483
Long: 108.215437

LINE TABLE		
LINE	DIRECTION	LENGTH
L1	S08°03'40"E	238.74'
L2	N48°44'32"W	67.24'
L3	N13°32'53"W	364.95'
L4	N06°42'01"W	670.29'
L5	N02°52'55"W	1005.16'
L6	N00°06'01"E	1308.15'
L7	N02°49'06"E	1644.55'
L8	N07°55'56"E	1973.56'

LINE TABLE		
LINE	DIRECTION	LENGTH
L9	S80°03'53"E	1391.40'
L10	N87°27'21"E	1401.10'
L11	N75°30'43"E	1499.78'
L12	N63°50'52"E	1578.44'
L13	N54°01'13"E	1671.18'
L14	N48°07'10"E	1967.33'
L15	N40°15'26"E	2093.98'
L16	N36°37'14"E	2416.53'



UINTAH ENGINEERING & LAND SURVEYING
85 So. 200 East • Vernal, Utah 84078 • (435) 789-1017