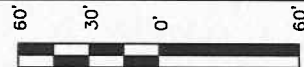


BERRY PETROLEUM COMPANY

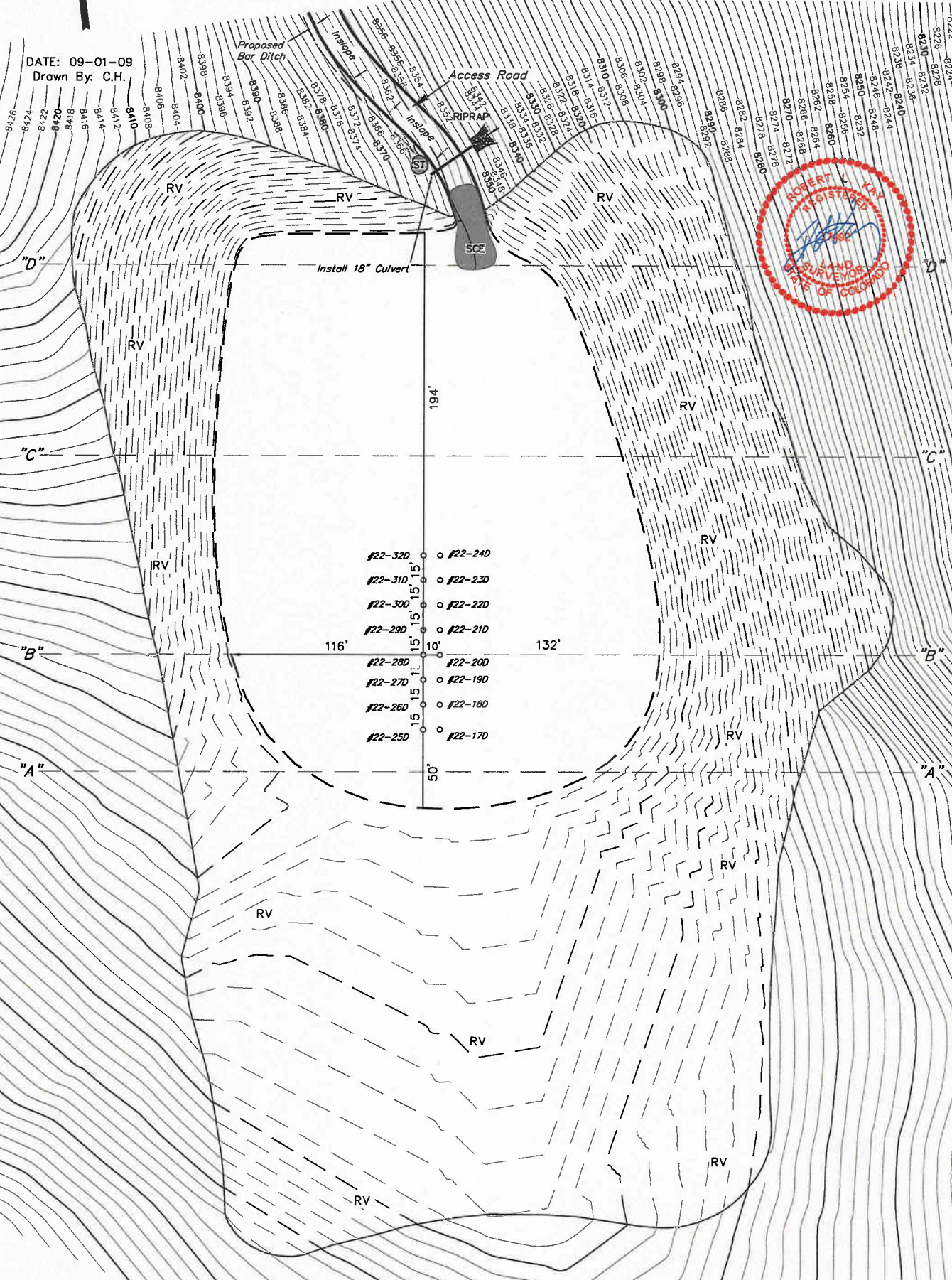
FINAL RECLAMATION PAD

WELL PAD E22 697
SECTION 22, T6S, R97W, 6th P.M.
SW 1/4 NW 1/4



Sheet 8 of 12

DATE: 09-01-09
Drawn By: C.H.



SWMP LEGEND:
SCE - STABILIZED
CONSTRUCTION
ENTRANCE
ST - SEDIMENT TRAP
RV- RE-VEGETATED

UINTAH ENGINEERING & LAND SURVEYING
85 So. 200 East * Vernal, Utah 84078 * (435) 789-1017

BERRY PETROLEUM COMPANY
CROSS SECTION FINAL RECLAMATION
WELL PAD E22 697
SECTION 22, T6S, R97W, 6th P.M.
SW 1/4 NW 1/4



Sheet 9 of 12

1" = 40'
X-Section
Scale
1" = 100'
DATE: 09-01-09
Drawn By: C.H.

