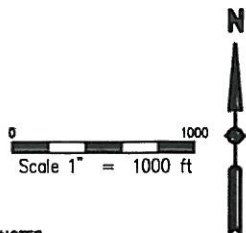
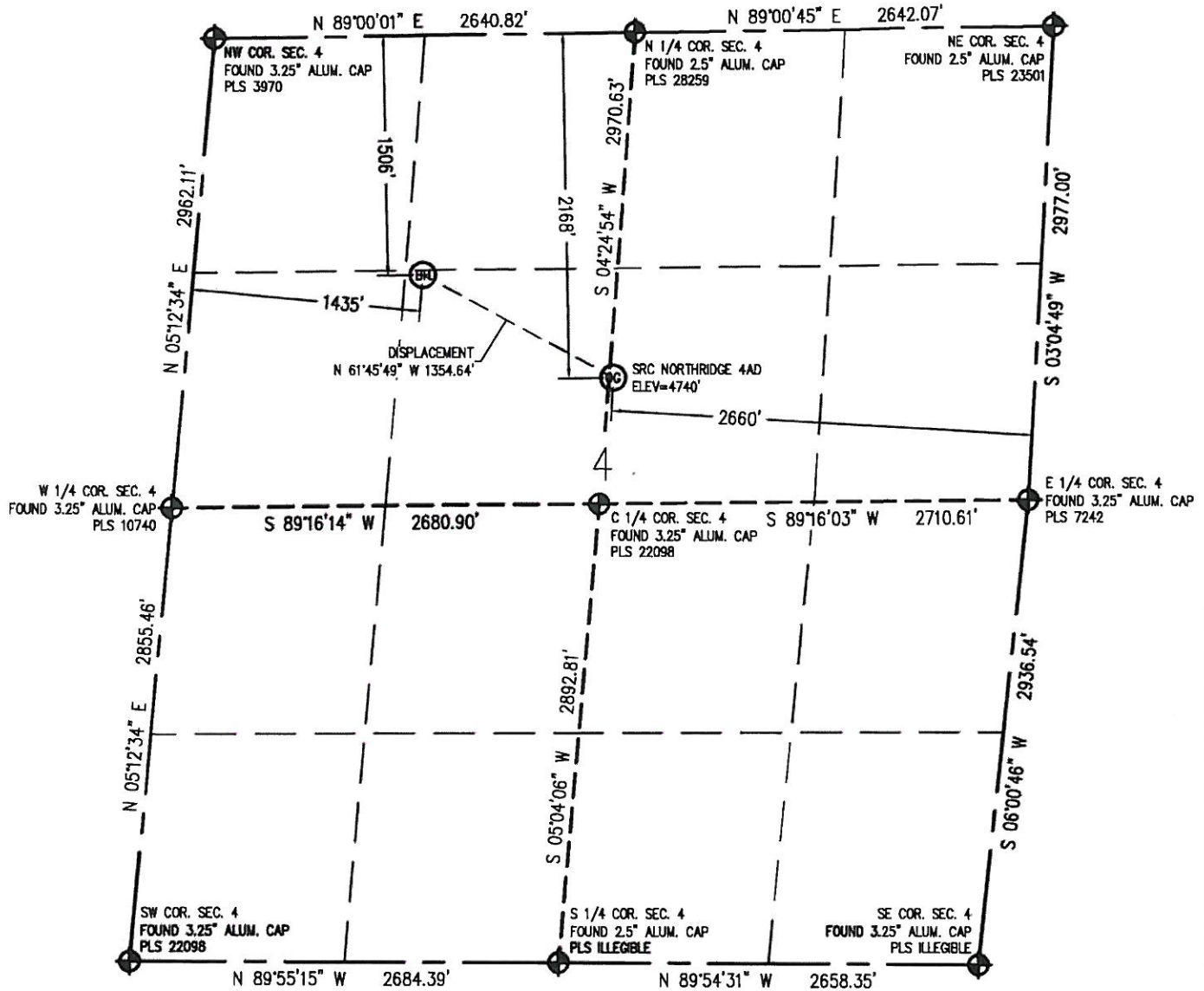


WELL LOCATION CERTIFICATE

THIS MAP DOES NOT REPRESENT A BOUNDARY SURVEY

SECTION 4
TOWNSHIP 5 NORTH
RANGE 66 WEST



IN ACCORDANCE WITH A REQUEST FROM CRAIG RASMUSON - SYNERGY RESOURCES, BASELINE ENGINEERING CORP. HAS DETERMINED THE LOCATION OF THE SRC NORTHBRIDGE 4AD TO BE 2168' FNL AND 2660' FEL, AS MEASURED AT NINETY (90) DEGREES FROM THE SECTION LINE OF SECTION 4, TOWNSHIP 5 NORTH, RANGE 66 WEST AND THE BOTTOM HOLE LOCATION TO BE 1506' FNL AND 1435' FNL OF SECTION 4, TOWNSHIP 5 NORTH, RANGE 66 WEST, 6TH PRINCIPAL MERIDIAN, WELD COUNTY, COLORADO.

I HEREBY CERTIFY THAT THIS WELL LOCATION CERTIFICATE WAS PREPARED BY ME, OR UNDER MY DIRECT SUPERVISION, THAT THE FIELD WORK WAS COMPLETED ON 12/14/2009, THAT IT IS NOT A LAND SURVEY PLAT OR AN IMPROVEMENT SURVEY PLAT, AND THAT IT IS NOT TO BE RELIED UPON FOR ESTABLISHMENT OF FENCE, BUILDING, OR OTHER FUTURE IMPROVEMENT LINES.

- NOTES:
- 1) LAT/LONG SHOWN ARE BASED ON A GPS OBSERVATION (NAD83).
 - 2) BEARINGS SHOWN ARE GRID BEARINGS OF THE COLORADO STATE PLANE COORDINATE SYSTEM, NORTH ZONE, NORTH AMERICAN DATUM 1983/2007.
 - 3) GROUND ELEVATIONS ARE BASED ON A GPS OBSERVATION (NAVD 88 DATUM).
 - 4) ALL DISTANCES SHOWN ARE FIELD MEASURED UNLESS OTHERWISE NOTED.
 - 5) IMPROVEMENTS: SEE VISIBLE IMPROVEMENTS EXHIBIT FOR ALL VISIBLE IMPROVEMENTS WITHIN 400' OF WELL HEAD.
 - 6) SURFACE USE: VACANT LOT.

SURFACE HOLE:
LATITUDE: 40.431429° N
LONGITUDE: 104.783483° W
PDOP: 1.1
1/4, 1/4: SW1/4 NE1/4
NEAREST PROPERTY LINE: 151' SOUTHEAST

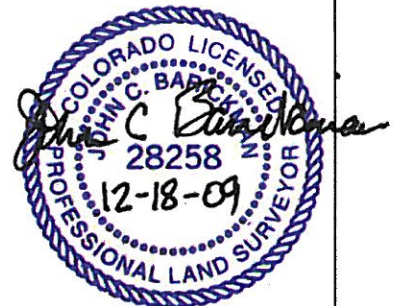
BOTTOM HOLE:
LATITUDE: 40.433214° N
LONGITUDE: 104.787751° W

LEGEND

- ⊕ - FOUND/SET SURVEY MONUMENT PER MONUMENT RECORD EXCEPTIONS NOTED.
- - CALCULATED SURVEY MONUMENT POSITION
- (C) - CALCULATED DIMENSION

John C. Barickman
Professional Land Surveyor Registration No. 28258
State of Colorado
FOR AND ON BEHALF OF BASELINE ENGINEERING CORP.

Completed
12/16/2009



NOTICE: According to Colorado law you MUST commence any legal action based upon any defect in this W.L.C. within three years after you first discover such defect. In no event may any action based upon any defect in this W.L.C. be commenced more than ten years from this said date of the certification shown hereon.

JOB #: SYN5N66W04-01