



Berry Petroleum Company

1999 Broadway St., Suite 3700
Denver, CO 80202

Ph: (303) 825-3344
Fax: (303) 825-3350

www.bry.com

February 25, 2010

Walter L. Jones
Chevron U.S.A. Inc.
11111 S. Wilcrest
Houston, TX 77099

RE: 30 Day Notice Requirement (Rule 305 and 306)
**Chevron 6-18D, 6-17D, 6-16D, 6-8D, 6-15D, 6-7D,
6-6D, 6-5D, 6-13D, 6-14D, 6-12D**
006 696 Pad - NWSE Sec. 6 - 6S 96W
Garfield County, Colorado

Dear Mr. Jones:

Please be advised that Berry Petroleum Company will be refileing permits with the Colorado Oil and Gas Conservation Commission, for the above referenced wells to be drilled off of the NWSE of Section 6 pad. There will be no additional surface disturbance beyond what is specified in the corresponding Surface Damage Agreement for this pad. Chevron previously approved these wells pursuant to letter dated December 29, 2008.

The enclosed notification, pursuant to Rule 305 and 306, is required as part of the re-filing process. If applicable, please sign and date where indicated and return to my attention.

Please contact the undersigned if you have any questions.

Thank you for your assistance in this matter.

Very truly yours,

Jerry L. Gonzalez
Senior Landman
303-999-4207

:enclosures

cc: Janni Keidel
Land Well files

**NOTICE REQUIREMENTS (RULE 305)
(O06 696 PAD)**

**Re: Well Name – Chevron 6-18D, 6-17D, 6-16D, 6-15D, 6-6D, 6-5D,
6-13D, 6-14D, 6-12D – Section 6 6S 96W, (Well Pad located in NWSE Section
6 6S 96W), Garfield County, CO**

In accordance with the Colorado Oil and Gas Conservation Commission for Notices of Oil and Gas Operations, Rule 305, the following information is required to be provided:

- Operations on the above referenced wells are estimated to commence August 15, 2010
- The operator will be: Berry Petroleum Company
1999 Broadway, Suite 3700
Denver, Colorado 80202
(303) 999-4400
- You may contact: Jerry L. Gonzalez, Senior Landman at (303) 999-4207, if you have any questions regarding this notice.
- Chevron #6-18D
Surface - 2134' FSL and 2598' FEL, Sec. 6, T6S, R96W
Bottom Hole - 4095' FNL and 2076' FWL, in Lot 14, Sec. 6, T6S, R96W

Chevron #6-17D
Surface - 2124' FSL and 2596' FEL, Sec. 6, T6S, R96W
Bottom Hole - 4420' FNL and 1999' FWL, in Lot 14, Sec. 6, T6S, R96W

Chevron #6-16D
Surface - 2115' FSL and 2593' FEL, Sec. 6, T6S, R96W
Bottom Hole - 2429' FSL and 2172' FEL, Sec. 6, T6S, R96W

Chevron #6-15D
Surface - 2096' FSL and 2587' FEL, Sec. 6, T6S, R96W
Bottom Hole - 2110' FSL and 2327' FEL, Sec. 6, T6S, R96W

Page 2

Chevron 6-18D, 6-17D, 6-16D,
6-15D, 6-6D, 6-5D,
6-13D, 6-14D and 6-12D

O06 696 Pad - NWSE Section 6 6S 96W

Chevron U.S.A. Inc.

February 25, 2010

Chevron #6-6D

Surface - 2076' FSL and 2581' FEL, Sec 6, T6S, R96W

Bottom Hole - 1844' FSL and 765' FEL, in Lot 17, Sec. 6, T6S, R96W

Chevron #6-5D

Surface - 2067' FSL and 2578' FEL, Sec. 6, T6S, R96W

Bottom Hole - 1554' FSL and 907' FEL, in Lot 17, Sec. 6, T6S, R96W

Chevron #6-13D

Surface - 2057' FSL and 2575' FEL, Sec. 6, T6S, R96W

Bottom Hole - 1783' FSL and 2240' FEL, Sec. 6, T6S, R96W

Chevron #6-14D

Surface - 2048' FSL and 2573' FEL, Sec. 6, T6S, R96W

Bottom Hole - 1498' FSL and 2153' FEL, Sec. 6, T6S, R96W

Chevron #6-12D

Surface - 2038' FSL and 2570' FEL, Sec. 6, T6S, R96W

Bottom Hole - 1105' FSL and 2126' FEL, Sec. 6, T6S, R96W

- The surface owner has the responsibility for notifying any affected tenant of the proposed operations.
- A brochure describing surface owner rights is available upon request from:
Colorado Oil and Gas Conservation Commission
1120 Lincoln Street
Suite 801
Denver, Co 80203

By signing below, the surface owner waives the above notification requirements of Rule 305.

Chevron U.S.A. Inc.

By: _____

Printed Name: _____

Title: _____

Date: _____

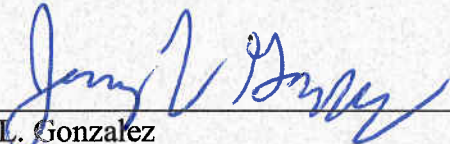
**SURFACE OWNER CONSULTATION (RULE 306)
(O06 696 PAD)**

Berry Petroleum Company confirms that the Surface Owner Consultation requirements of Rule 306 have been completed or waived for the following proposed well locations.

**Well Name – Chevron 6-18D, 6-17D, 6-16D, 6-15D, 6-6D, 6-5D, 6-13D, 6-14D,
6-12D - Section 6 6S 96W, (Well Pad located in NWSE Section 6 6S 96W),
Garfield County, CO**

Road Description: Existing roadway use and new construction as required for access was previously agreed upon by all parties.

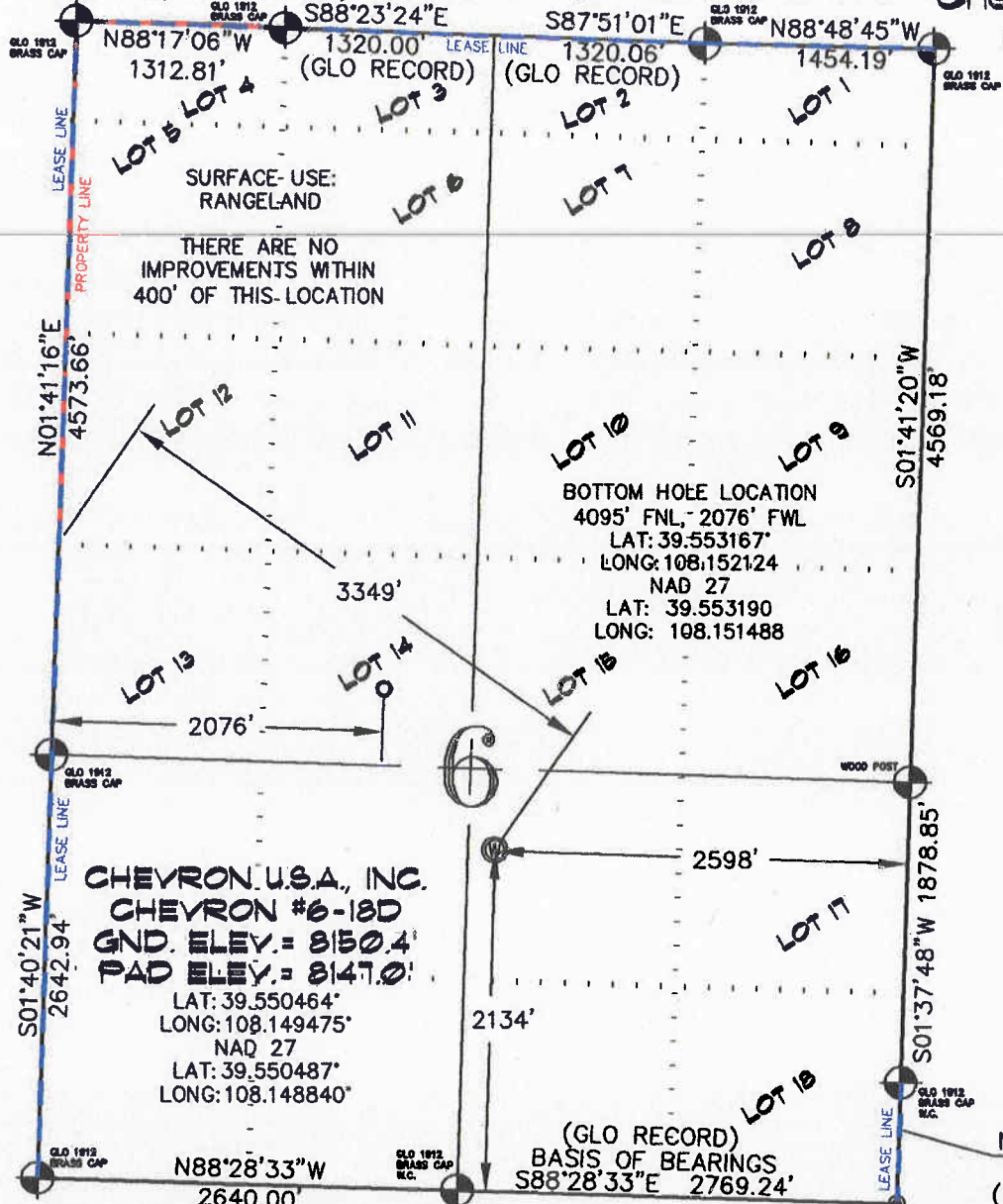
Berry Petroleum Company



Jerry L. Gonzalez
Senior Landman

Date 2/25/10

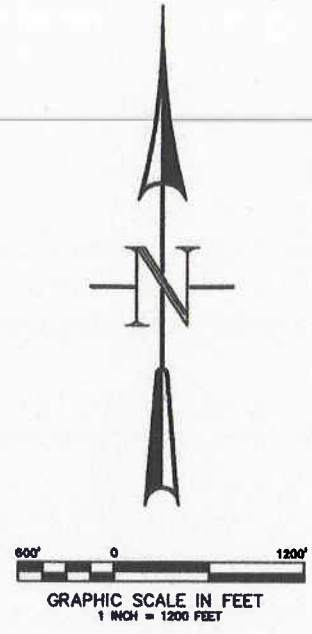
SEC. 6, T. 6 S., R. 96 W. OF THE 6TH P.M. Chevron 0-06-696 Well Location



SURFACE-USE: RANGELAND
 THERE ARE NO IMPROVEMENTS WITHIN 400' OF THIS-LOCATION

BOTTOM HOLE LOCATION
 4095' FNL - 2076' FWL
 LAT: 39.553167
 LONG: 108.152124
 NAD 27
 LAT: 39.553190
 LONG: 108.151488

CHEVRON U.S.A., INC.
 CHEVRON #6-18D
 GND. ELEV. = 8150.4'
 PAD ELEV. = 8147.0'
 LAT: 39.550464
 LONG: 108.149475
 NAD 27
 LAT: 39.550487
 LONG: 108.148840



-LEGEND-

- SECTION CORNER LOCATION BASED ON GLO RECORD INFORMATION
- ⊙ FIELD SURVEYED SECTION CORNER LOCATIONS
- ⊙ FIELD SURVEYED WELL LOCATION
- ⊙ CALCULATED BOTTOM HOLE LOCATION

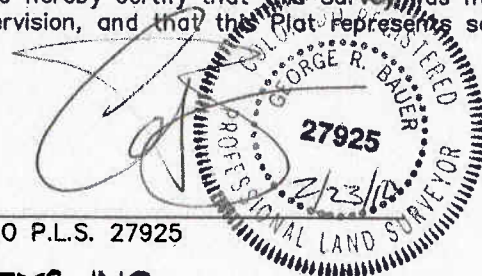
THIS WELL LOCATION PLAT WAS PREPARED FOR BERRY PETROLEUM COMPANY, TO LOCATE THE CHEVRON #6-18D WELL, 2134 FEET FROM THE SOUTH LINE AND 2598 FEET FROM THE EAST LINE IN THE NW1/4 SE1/4 OF SECTION 6, T. 6 S., R. 96 W. OF THE 6TH P.M. GARFIELD COUNTY, COLORADO.

REFERENCE NOTES

- 1) T. 6 S., R. 96 W., 6TH P.M. GLO PLAT.
- 2) U.S.G.S. QUAD: CIRLCE DOT GULCH, CO
- 3) ELEVATIONS BASED ON N.A.V.D. 1988
- 4) LATITUDES AND LONGITUDES ARE BASED ON NAD 83, COLORADO CENTRAL ZONE.
- 5) GPS OPERATOR ROBERT WOOD, OBSERVED A PDOP OF 2.2.
- 6) ALL GPS OBSERVATIONS ARE IN COMPLIANCE WITH COGCC RULE NO. 215.
- 7) SURFACE AND BOTTOM HOLE LOCATIONS ARE MEASURED 90' FROM SECTION LINES.

SURVEYOR'S CERTIFICATE

I, George R. Bauer: a Professional Land Surveyor in the State of Colorado do hereby certify that this Survey was made under my direct supervision, and that the Plat represents said Survey.



COLORADO P.L.S. 27925



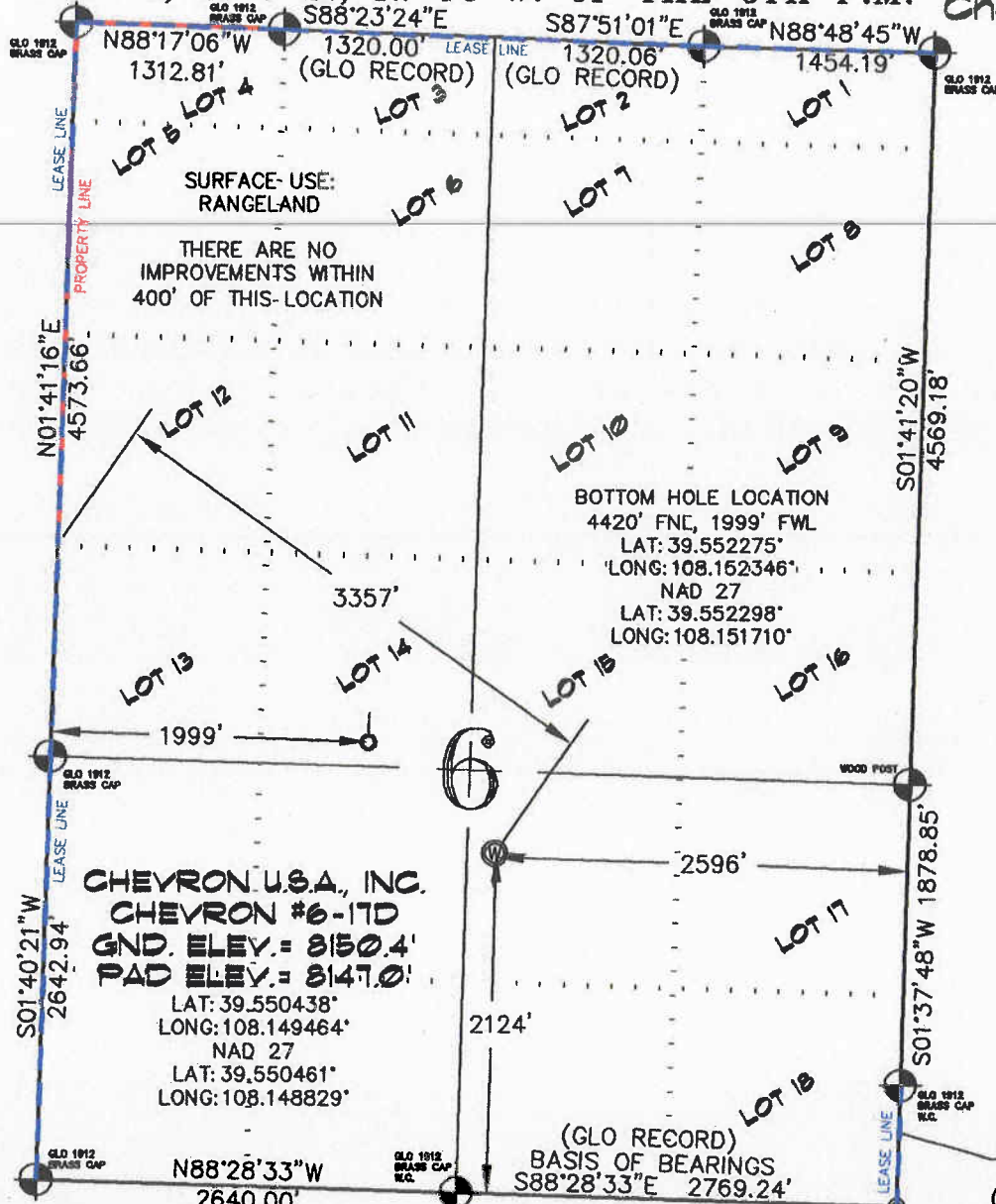
CONSTRUCTION SURVEYS, INC.
 0012 SUNRISE BLVD.
 SILT, CO 81652
 (970)876-5753

VIEW: 1A

SURVEYED: 03/28/08	SCALE: 1" = 1200'
DRAFTED: 02/19/10	DWG: BERRY\CHEV06-696
CHECKED: 02/22/10	SHEET: 1 of 11

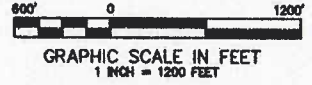
SEC. 6, T. 6 S., R. 96 W. OF THE 6TH P.M.

Chevron O-06-696
Well Location



CHEVRON U.S.A., INC.
CHEVRON #6-17D
GND. ELEV. = 8150.4'
PAD ELEV. = 8147.0'
 LAT: 39.550438°
 LONG: 108.149464°
 NAD 27
 LAT: 39.550461°
 LONG: 108.148829°

BOTTOM HOLE LOCATION
 4420' FNE, 1999' FWL
 LAT: 39.552275°
 'LONG: 108.162346°
 NAD 27
 LAT: 39.552298°
 LONG: 108.151710°



-LEGEND-

- SECTION CORNER LOCATION
● BASED ON GLO RECORD INFORMATION
- ⊙ FIELD SURVEYED SECTION CORNER LOCATIONS
- ⊙ FIELD SURVEYED WELL LOCATION
- ⊙ CALCULATED BOTTOM HOLE LOCATION

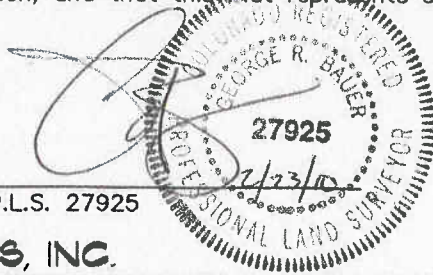
THIS WELL LOCATION PLAT WAS PREPARED FOR BERRY PETROLEUM COMPANY, TO LOCATE THE CHEVRON #6-17D WELL, 2124 FEET FROM THE SOUTH LINE AND 2596 FEET FROM THE EAST LINE IN THE NW1/4 SE1/4 OF SECTION 6, T. 6 S., R. 96 W. OF THE 6TH P.M. GARFIELD COUNTY, COLORADO.

REFERENCE NOTES

- 1) T. 6 S., R. 96 W., 6TH P.M. GLO PLAT.
- 2) U.S.G.S. QUAD: CIRLCE DOT GULCH, CO
- 3) ELEVATIONS BASED ON N.A.V.D. 1988
- 4) LATITUDES AND LONGITUDES ARE BASED ON NAD 83, COLORADO CENTRAL ZONE.
- 5) GPS OPERATOR: ROBERT WOOD, OBSERVED A PPOF OF 2.2.
- 6) ALL GPS OBSERVATIONS ARE IN COMPLIANCE WITH COGCC RULE NO. 215.
- 7) SURFACE AND BOTTOM HOLE LOCATIONS ARE MEASURED 90° FROM SECTION LINES.

SURVEYOR'S CERTIFICATE

I, George R. Bauer: a Professional Land Surveyor in the State of Colorado do hereby certify that this Survey was made under my direct supervision, and that this Plat represents said Survey.



COLORADO P.L.S. 27925

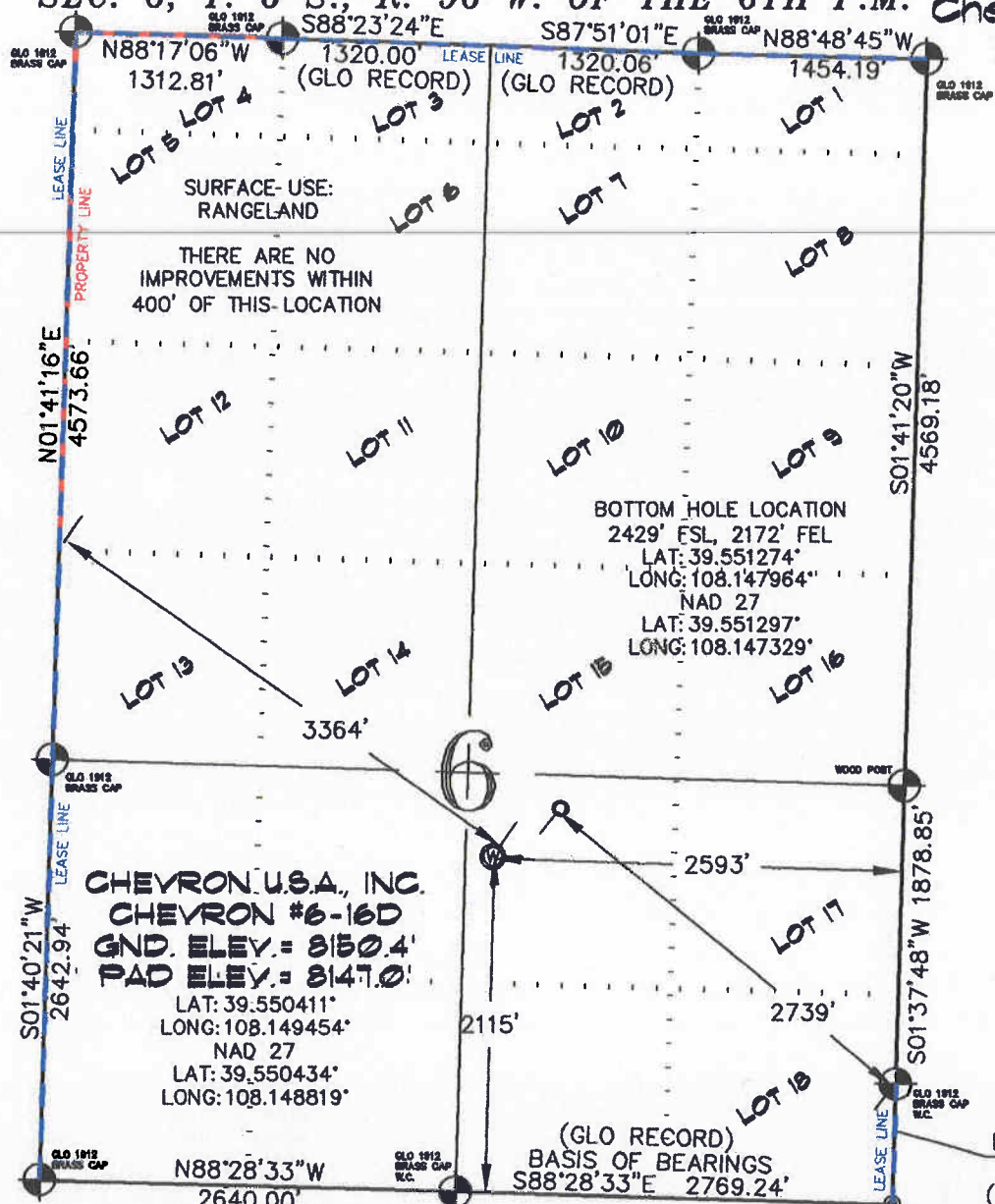


CONSTRUCTION SURVEYS, INC.
 0012 SUNRISE BLVD.
 SILT, CO 81652
 (970)876-5753

VIEW: 1B

SURVEYED: 03/28/08	SCALE: 1" = 1200'
DRAFTED: 02/19/10	DWG: BERRY\CHEV06-696
CHECKED: 02/22/10	SHEET: 1 of 11

SEC. 6, T. 6 S., R. 96 W. OF THE 6TH P.M. Chevron O-06-696



-LEGEND-

- SECTION CORNER LOCATION
● BASED ON GLO RECORD INFORMATION
- ⊕ FIELD SURVEYED SECTION CORNER LOCATIONS
- ⊙ FIELD SURVEYED WELL LOCATION
- ⊙ CALCULATED BOTTOM HOLE LOCATION

CHEVRON U.S.A., INC.
CHEVRON #6-16D
GND. ELEV. = 8150.4'
PAD ELEV. = 8147.0'
 LAT: 39.550411°
 LONG: 108.149454°
 NAD 27
 LAT: 39.550434°
 LONG: 108.148819°

THIS WELL LOCATION PLAT WAS PREPARED FOR BERRY PETROLEUM COMPANY, TO LOCATE THE CHEVRON #6-16D WELL, 2115 FEET FROM THE SOUTH LINE AND 2593 FEET FROM THE EAST LINE IN THE NW1/4 SE1/4 OF SECTION 6, T. 6 S., R. 96 W. OF THE 6TH P.M. GARFIELD COUNTY, COLORADO.

REFERENCE NOTES

- 1) T. 6 S., R. 96 W., 6TH P.M. GLO PLAT.
- 2) U.S.G.S. QUAD: CIRLCE DOT GULCH, CO
- 3) ELEVATIONS BASED ON N.A.V.D. 1988
- 4) LATITUDES AND LONGITUDES ARE BASED ON NAD 83, COLORADO CENTRAL ZONE.
- 5) GPS OPERATOR ROBERT WOOD, OBSERVED A PDOP OF 2.2.
- 6) ALL GPS OBSERVATIONS ARE IN COMPLIANCE WITH COGCC RULE NO. 215.
- 7) SURFACE AND BOTTOM HOLE LOCATIONS ARE MEASURED 90° FROM SECTION LINES.

SURVEYOR'S CERTIFICATE

I, George R. Bauer: a Professional Land Surveyor in the State of Colorado do hereby certify that this Survey was made under my direct supervision, and that this Plat represents said Survey.



COLORADO P.L.S. 27925

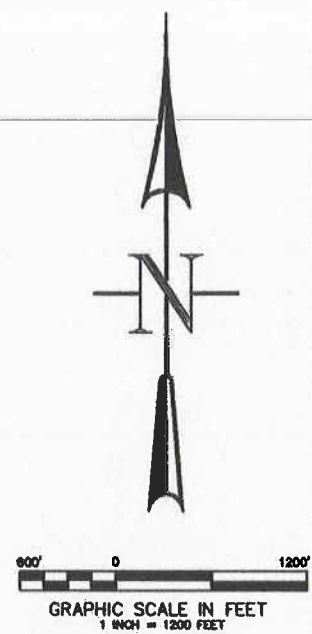
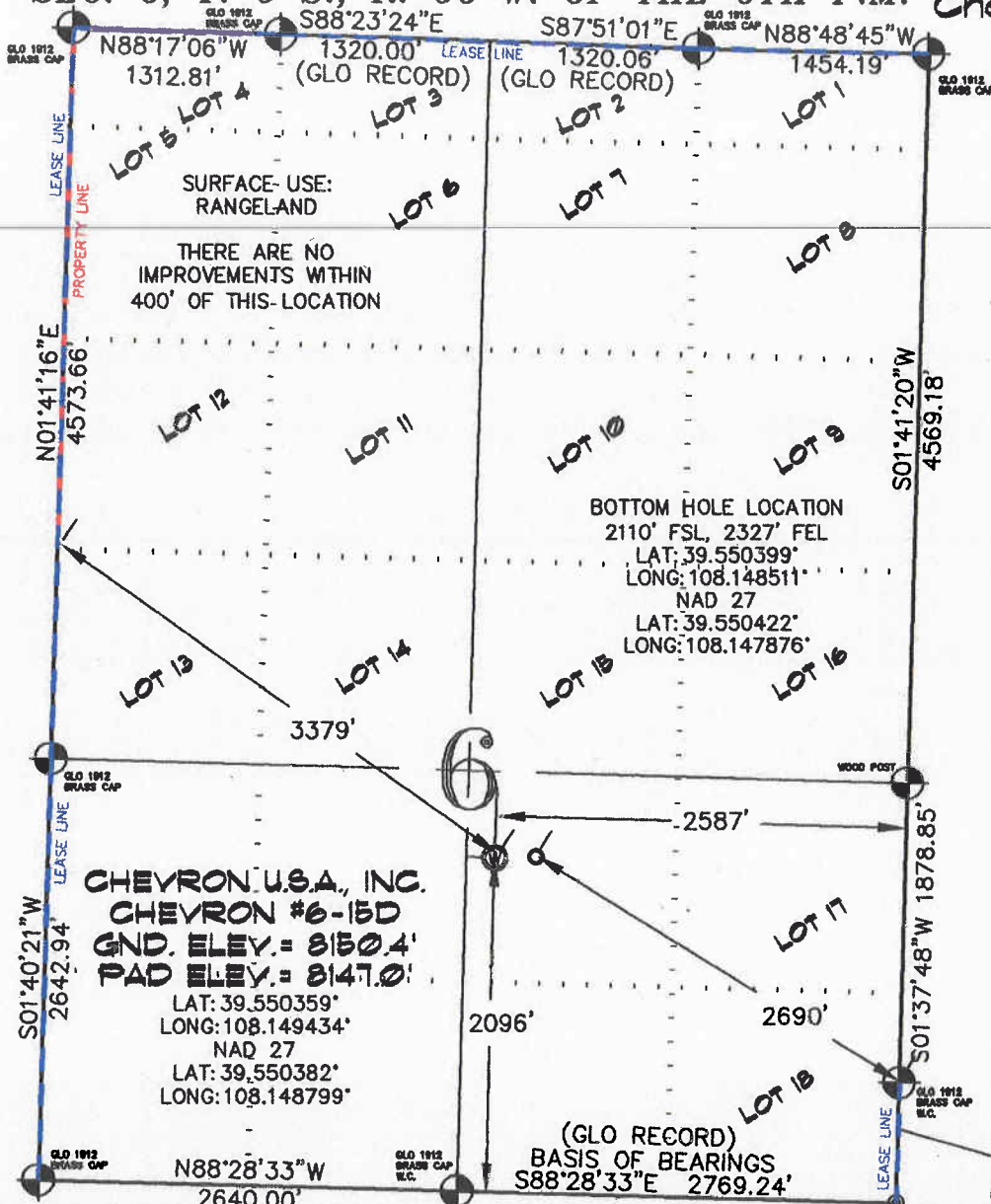


CONSTRUCTION SURVEYS, INC.
 0012 SUNRISE BLYD.
 SILT, CO 81652
 (970)876-5753

SURVEYED: 03/28/08	SCALE: 1" = 1200'
DRAFTED: 02/19/10	DWG: BERRY\CHEV06-696
CHECKED: 02/22/10	SHEET: 1 of 11

VIEW: 1C

SEC. 6, T. 6 S., R. 96 W. OF THE 6TH P.M. Chevron O-06-696 Well Location



-LEGEND-

- SECTION CORNER LOCATION
● BASED ON GLO RECORD INFORMATION
- ⊙ FIELD SURVEYED SECTION CORNER LOCATIONS
- ⊙ FIELD SURVEYED WELL LOCATION
- ⊙ CALCULATED BOTTOM HOLE LOCATION

CHEVRON U.S.A., INC.
CHEVRON #6-15D
GND. ELEV. = 8150.4'
PAD ELEV. = 8147.0'
 LAT: 39.550359°
 LONG: 108.149434°
 NAD 27
 LAT: 39.550382°
 LONG: 108.148799°

THIS WELL LOCATION PLAT WAS PREPARED FOR BERRY PETROLEUM COMPANY, TO LOCATE THE CHEVRON #6-15D WELL, 2096 FEET FROM THE SOUTH LINE AND 2587 FEET FROM THE EAST LINE IN THE NW1/4 SE1/4 OF SECTION 6, T. 6 S., R. 96 W. OF THE 6TH P.M. GARFIELD COUNTY, COLORADO.

REFERENCE NOTES

- 1) T. 6 S., R. 96 W., 6TH P.M. GLO PLAT.
- 2) U.S.G.S. QUAD: CIRLGE DOT GULCH, CO
- 3) ELEVATIONS BASED ON N.A.V.D. 1988
- 4) LATITUDES AND LONGITUDES ARE BASED ON NAD 83, COLORADO CENTRAL ZONE.
- 5) GPS OPERATOR ROBERT WOOD, OBSERVED A PDOP OF 2.2.
- 6) ALL GPS OBSERVATIONS ARE IN COMPLIANCE WITH COGCC RULE NO. 215.
- 7) SURFACE AND BOTTOM HOLE LOCATIONS ARE MEASURED 90° FROM SECTION LINES.

SURVEYOR'S CERTIFICATE

I, George R. Bauer: a Professional Land Surveyor in the State of Colorado do hereby certify that this Survey was made under my direct supervision, and that this Plat represents said Survey.



COLORADO P.L.S. 27925

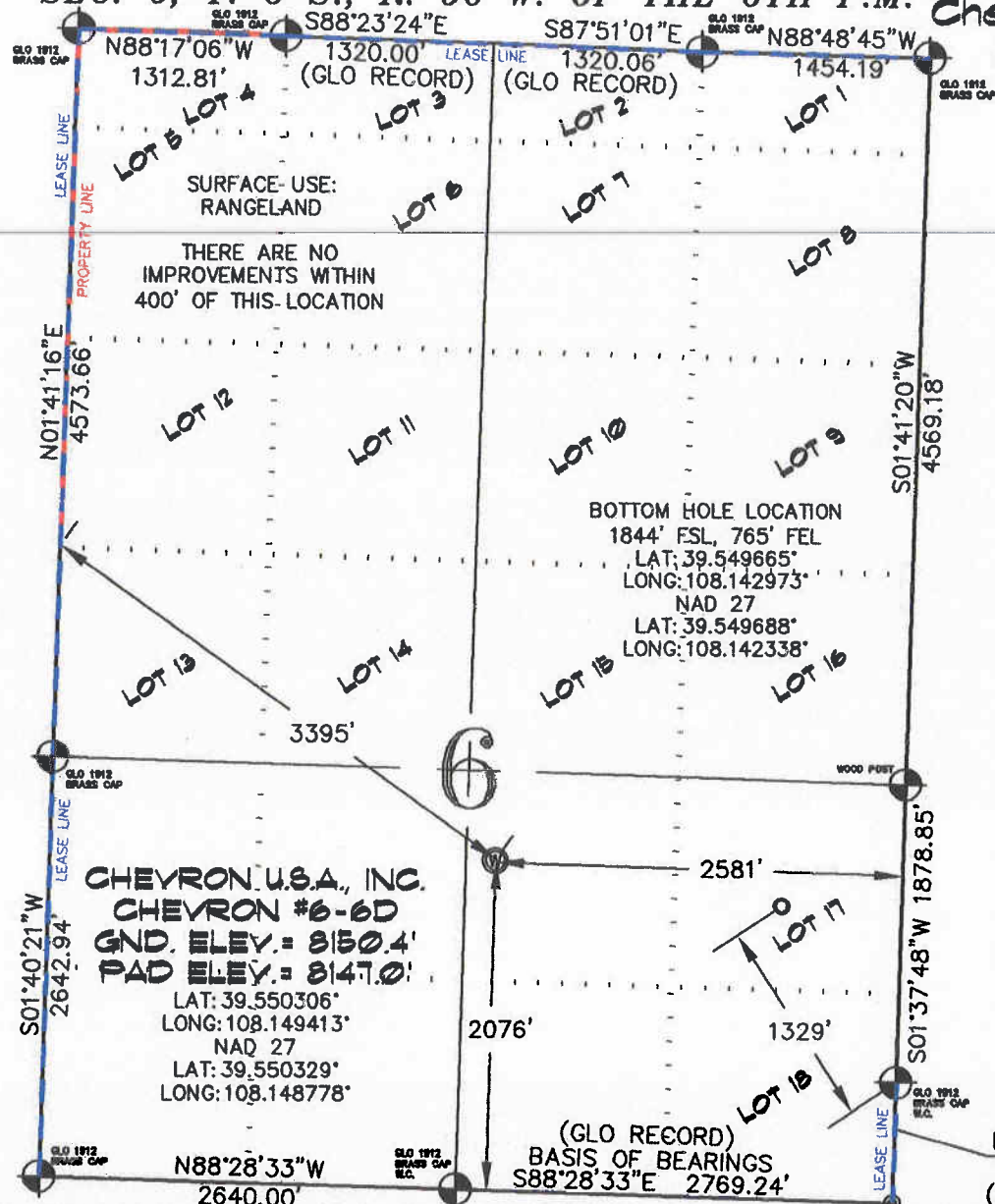


CONSTRUCTION SURVEYS, INC.
 0012 SUNRISE BLVD.
 SILT, CO 81652
 (970)876-5753

VIEW: 1E

SURVEYED: 03/28/08	SCALE: 1" = 1200'
DRAFTED: 02/19/10	DWG: BERRY\CHEV06-696
CHECKED: 02/22/10	SHEET: 1 of 11

SEC. 6, T. 6 S., R. 96 W. OF THE 6TH P.M. Chevron 0-06-696 Well Location



CHEVRON U.S.A., INC.
CHEVRON #6-6D
GND. ELEV. = 8150.4'
PAD ELEV. = 8147.0'
 LAT: 39.550306°
 LONG: 108.149413°
 NAD 27
 LAT: 39.550329°
 LONG: 108.148778°

BOTTOM HOLE LOCATION
 1844' FSL, 765' FEL
 LAT: 39.549665°
 LONG: 108.142973°
 NAD 27
 LAT: 39.549688°
 LONG: 108.142338°



-LEGEND-

- SECTION CORNER LOCATION
BASED ON GLO RECORD INFORMATION
- ⊙ FIELD SURVEYED SECTION CORNER LOCATIONS
- ⊙ FIELD SURVEYED WELL LOCATION
- CALCULATED BOTTOM HOLE LOCATION

THIS WELL LOCATION PLAT WAS PREPARED FOR BERRY PETROLEUM COMPANY, TO LOCATE THE CHEVRON #6-6D WELL, 2076 FEET FROM THE SOUTH LINE AND 2581 FEET FROM THE EAST LINE IN THE NW1/4 SE1/4 OF SECTION 6, T. 6 S., R. 96 W. OF THE 6TH P.M. GARFIELD COUNTY, COLORADO.

REFERENCE NOTES

- 1) T. 6 S., R. 96 W., 6TH P.M. GLO PLAT.
- 2) U.S.G.S. QUAD: CIRLCE DOT GULCH, CO
- 3) ELEVATIONS BASED ON N.A.V.D. 1988
- 4) LATITUDES AND LONGITUDES ARE BASED ON NAD 83, COLORADO CENTRAL ZONE.
- 5) GPS OPERATOR ROBERT WOOD, OBSERVED A PDOP OF 2.2.
- 6) ALL GPS OBSERVATIONS ARE IN COMPLIANCE WITH COGCC RULE NO. 215.
- 7) SURFACE AND BOTTOM HOLE LOCATIONS ARE MEASURED 90° FROM SECTION LINES.

SURVEYOR'S CERTIFICATE

I, George R. Bauer: a Professional Land Surveyor in the State of Colorado do hereby certify that this Survey was made under my direct supervision, and that this Plat represents said Survey.



COLORADO P.L.S. 27925



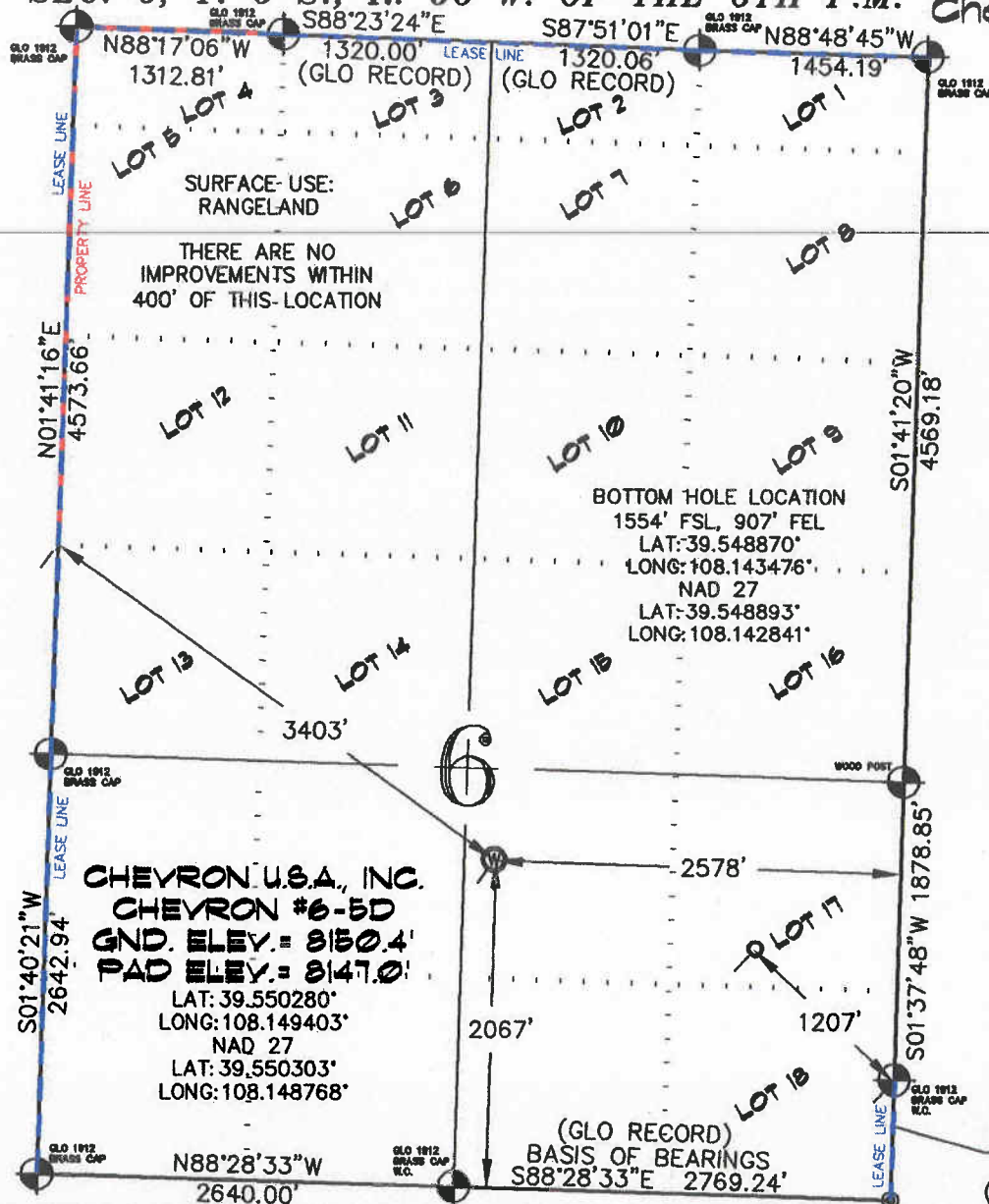
CONSTRUCTION SURVEYS, INC.
 0012 SUNRISE BLVD.
 SILT, CO 81652
 (970)876-5753

VIEW: 1G

SURVEYED: 03/28/08	SCALE: 1" = 1200'
DRAFTED: 02/19/10	DWG: BERRY\CHEVO6-696
CHECKED: 02/22/10	SHEET: 1 of 11

SEC. 6, T. 6 S., R. 96 W. OF THE 6TH P.M. Chevron 0-06-696

Well Location



CHEVRON U.S.A., INC.
CHEVRON #6-5D
GND. ELEV. = 8150.4'
PAD ELEV. = 8147.0'
 LAT: 39.550280°
 LONG: 108.149403°
 NAD 27
 LAT: 39.550303°
 LONG: 108.148768°



-LEGEND-

- SECTION CORNER LOCATION
- BASED ON GLO RECORD INFORMATION
- ⊕ FIELD SURVEYED SECTION CORNER LOCATIONS
- ⊙ FIELD SURVEYED WELL LOCATION
- ⊙ CALCULATED BOTTOM HOLE LOCATION

THIS WELL LOCATION PLAT WAS PREPARED FOR BERRY PETROLEUM COMPANY, TO LOCATE THE CHEVRON #6-5D WELL, 2067 FEET FROM THE SOUTH LINE AND 2578 FEET FROM THE EAST LINE IN THE NW1/4 SE1/4 OF SECTION 6, T. 6 S., R. 96 W. OF THE 6TH P.M. GARFIELD COUNTY, COLORADO.

REFERENCE NOTES

- 1) T. 6 S., R. 96 W., 6TH P.M. GLO PLAT.
- 2) U.S.G.S. QUAD: CIRLCE DOT GULCH, CO
- 3) ELEVATIONS BASED ON N.A.V.D. 1988
- 4) LATITUDES AND LONGITUDES ARE BASED ON NAD 83, COLORADO CENTRAL ZONE.
- 5) GPS OPERATOR ROBERT WOOD, OBSERVED A PDOP OF 2.2.
- 6) ALL GPS OBSERVATIONS ARE IN COMPLIANCE WITH COGCC RULE NO. 215.
- 7) SURFACE AND BOTTOM HOLE LOCATIONS ARE MEASURED 90° FROM SECTION LINES.

SURVEYOR'S CERTIFICATE

I, George R. Bauer: a Professional Land Surveyor in the State of Colorado do hereby certify that this Survey was made under my direct supervision, and that this plat represents said Survey.



COLORADO P.L.S. 27925



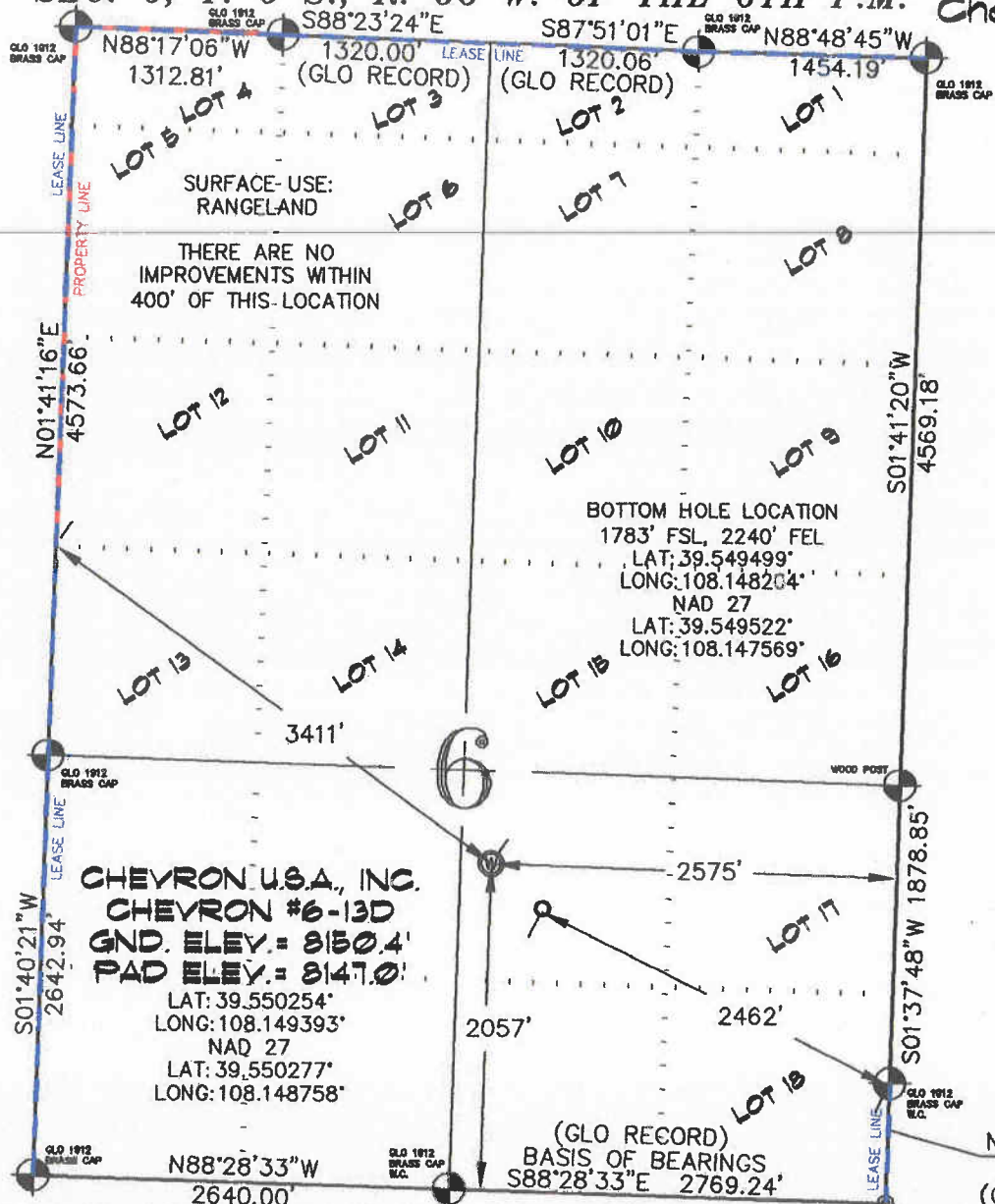
CONSTRUCTION SURVEYS, INC.
 0012 SUNRISE BLVD.
 SILT, CO 81652
 (970)876-5753

VIEW: 1H

SURVEYED: 03/28/08	SCALE: 1" = 1200'
DRAFTED: 02/19/10	DWG: BERRY\CHEV06-696
CHECKED: 02/22/10	SHEET: 1 of 11

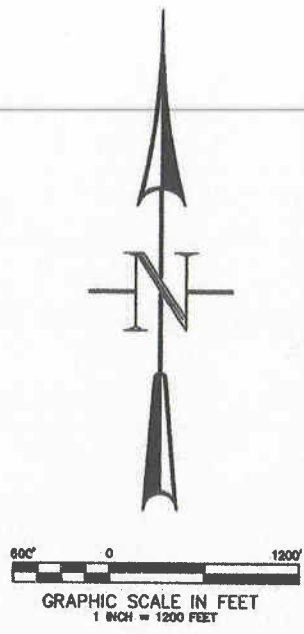
SEC. 6, T. 6 S., R. 96 W. OF THE 6TH P.M. Chevron 0-06-696

Well Location



CHEVRON U.S.A., INC.
 CHEVRON #6-13D
 GND. ELEV. = 8150.4'
 PAD ELEV. = 8147.0'
 LAT: 39.550254
 LONG: 108.149393
 NAD 27
 LAT: 39.550277
 LONG: 108.148758

BOTTOM HOLE LOCATION
 1783' FSL, 2240' FEL
 LAT: 39.549499
 LONG: 108.148204
 NAD 27
 LAT: 39.549522
 LONG: 108.147569



- LEGEND-**
- SECTION CORNER LOCATION
 ○ BASED ON GLO RECORD INFORMATION
 - ⊙ FIELD SURVEYED SECTION CORNER LOCATIONS
 - ⊙ FIELD SURVEYED WELL LOCATION
 - CALCULATED BOTTOM HOLE LOCATION

THIS WELL LOCATION PLAT WAS PREPARED FOR BERRY PETROLEUM COMPANY, TO LOCATE THE CHEVRON #6-13D WELL, 2057 FEET FROM THE SOUTH LINE AND 2575 FEET FROM THE EAST LINE IN THE NW1/4 SE1/4 OF SECTION 6, T. 6 S., R. 96 W. OF THE 6TH P.M. GARFIELD COUNTY, COLORADO.

REFERENCE NOTES

- 1) T. 6 S., R. 96 W., 6TH P.M. GLO PLAT.
- 2) U.S.G.S. QUAD: CIRLCE DOT GULCH, CO
- 3) ELEVATIONS BASED ON N.A.V.D. 1988
- 4) LATITUDES AND LONGITUDES ARE BASED ON NAD 83, COLORADO CENTRAL ZONE.
- 5) GPS OPERATOR ROBERT WOOD, OBSERVED A PDOP OF 2.2.
- 6) ALL GPS OBSERVATIONS ARE IN COMPLIANCE WITH COGCC RULE NO. 215.
- 7) SURFACE AND BOTTOM HOLE LOCATIONS ARE MEASURED 90° FROM SECTION LINES.

SURVEYOR'S CERTIFICATE

I, George R. Bauer: a Professional Land Surveyor in the State of Colorado do hereby certify that this Survey was made under my direct supervision, and that this Plat represents said Survey.



COLORADO P.L.S. 27925

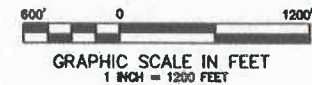
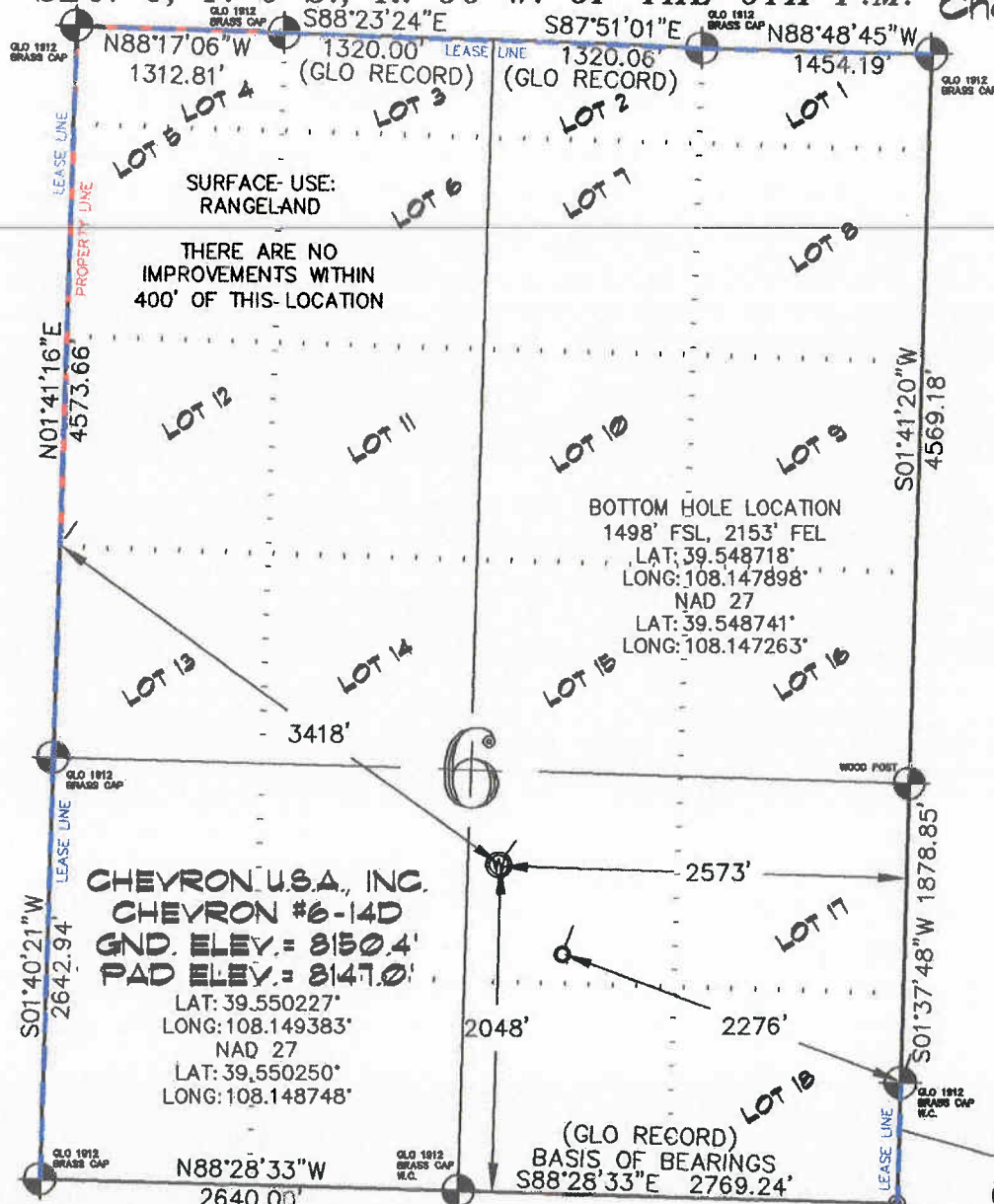


CONSTRUCTION SURVEYS, INC.
 0012 SUNRISE BLVD.
 SILT, CO 81652
 (970)876-5753

VIEW: 11

SURVEYED: 03/28/08	SCALE: 1" = 1200'
DRAFTED: 02/19/10	DWG: BERRY\CHEVO6-696
CHECKED: 02/22/10	SHEET: 1 of 11

SEC. 6, T. 6 S., R. 96 W. OF THE 6TH P.M. Chevron O-06-696 Well Location



-LEGEND-

- SECTION CORNER LOCATION
● BASED ON GLO RECORD INFORMATION
- FIELD SURVEYED SECTION CORNER LOCATIONS
- ⊙ FIELD SURVEYED WELL LOCATION
- CALCULATED BOTTOM HOLE LOCATION

CHEVRON U.S.A., INC.
CHEVRON #6-14D
GND. ELEV. = 8150.4'
PAD ELEV. = 8147.0'
 LAT: 39.550227°
 LONG: 108.149383°
 NAD 27
 LAT: 39.550250°
 LONG: 108.148748°

THIS WELL LOCATION PLAT WAS PREPARED FOR BERRY PETROLEUM COMPANY, TO LOCATE THE CHEVRON #6-14D WELL, 2048 FEET FROM THE SOUTH LINE AND 2573 FEET FROM THE EAST LINE IN THE NW1/4 SE1/4 OF SECTION 6, T. 6 S., R. 96 W. OF THE 6TH P.M. GARFIELD COUNTY, COLORADO.

REFERENCE NOTES

- 1) T. 6 S., R. 96 W., 6TH P.M. GLO PLAT.
- 2) U.S.G.S. QUAD: CIRLCE DOT GULCH, CO
- 3) ELEVATIONS BASED ON N.A.V.D. 1988
- 4) LATITUDES AND LONGITUDES ARE BASED ON NAD 83, COLORADO CENTRAL ZONE.
- 5) GPS OPERATOR ROBERT WOOD, OBSERVED A PDOF OF 2.2.
- 6) ALL GPS OBSERVATIONS ARE IN COMPLIANCE WITH COGCC RULE NO. 215.
- 7) SURFACE AND BOTTOM HOLE LOCATIONS ARE MEASURED 90° FROM SECTION LINES.

SURVEYOR'S CERTIFICATE

I, George R. Bauer: a Professional Land Surveyor in the State of Colorado do hereby certify that this Survey was made under my direct supervision, and that this Plat represents said Survey.



COLORADO P.L.S. 27925



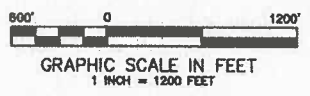
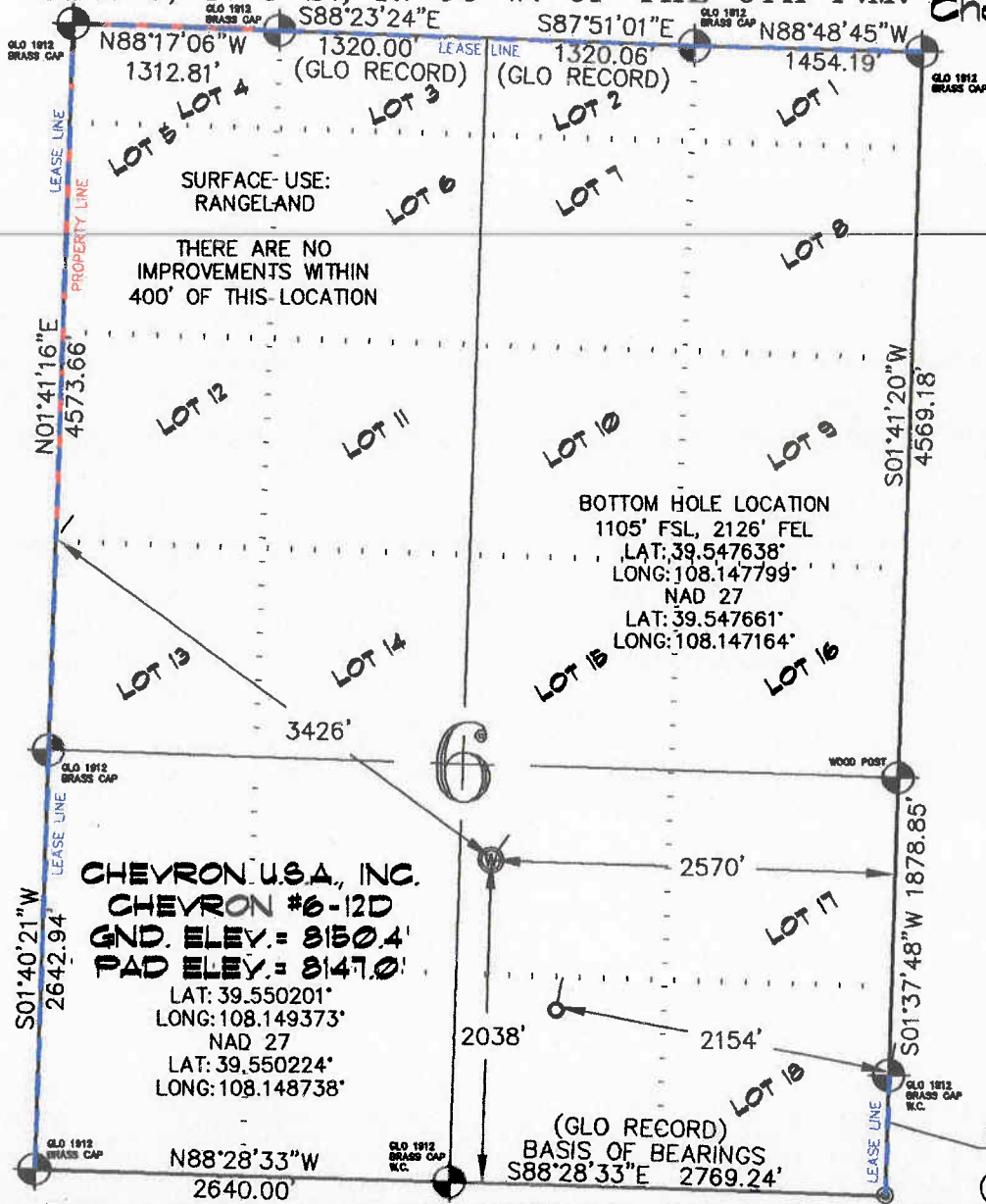
CONSTRUCTION SURVEYS, INC.
 0012 SUNRISE BLYD.
 SILT, CO 81652
 (970)876-5753

SURVEYED: 03/28/08	SCALE: 1" = 1200'
DRAFTED: 02/19/10	DWG: BERRY\CHEVO6-696
CHECKED: 02/22/10	SHEET: 1 of 11

VIEW: 1J

SEC. 6, T. 6 S., R. 96 W. OF THE 6TH P.M.

Chevron 0-06-696
Well Location



-LEGEND-

- SECTION CORNER LOCATION
● BASED ON GLO RECORD INFORMATION
- ⊙ FIELD SURVEYED SECTION CORNER LOCATIONS
- ⊙ FIELD SURVEYED WELL LOCATION
- CALCULATED BOTTOM HOLE LOCATION

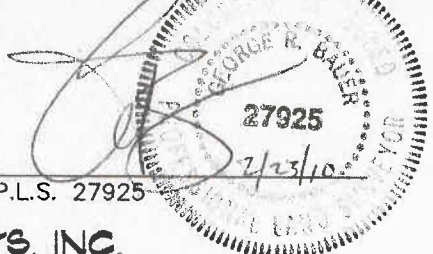
THIS WELL LOCATION PLAT WAS PREPARED FOR BERRY PETROLEUM COMPANY, TO LOCATE THE CHEVRON #6-12D WELL, 2038 FEET FROM THE SOUTH LINE AND 2570 FEET FROM THE EAST LINE IN THE NW1/4 SE1/4 OF SECTION 6, T. 6 S., R. 96 W. OF THE 6TH P.M. GARFIELD COUNTY, COLORADO.

REFERENCE NOTES

- 1) T. 6 S., R. 96 W., 6TH P.M. GLO PLAT.
- 2) U.S.G.S. QUAD: CIRLCE DOT GULCH, CO
- 3) ELEVATIONS BASED ON N.A.V.D. 1988
- 4) LATITUDES AND LONGITUDES ARE BASED ON NAD 83, COLORADO CENTRAL ZONE.
- 5) GPS OPERATOR ROBERT WOOD, OBSERVED A PDOP OF 2.2.
- 6) ALL GPS OBSERVATIONS ARE IN COMPLIANCE WITH COGCC RULE NO. 215.
- 7) SURFACE AND BOTTOM HOLE LOCATIONS ARE MEASURED 90° FROM SECTION LINES.

SURVEYOR'S CERTIFICATE

I, George R. Bauer: a Professional Land Surveyor in the State of Colorado do hereby certify that this Survey was made under my direct supervision, and that this Plat represents said Survey.



COLORADO P.L.S. 27925



CONSTRUCTION SURVEYS, INC.
0012 SUNRISE BLVD.
SILT, CO 81652
(970)876-5753

VIEW: 1K

SURVEYED: 03/28/08	SCALE: 1" = 1200'
DRAFTED: 02/19/10	DWG: BERRY\CHEV06-696
CHECKED: 02/22/10	SHEET: 1 of 11