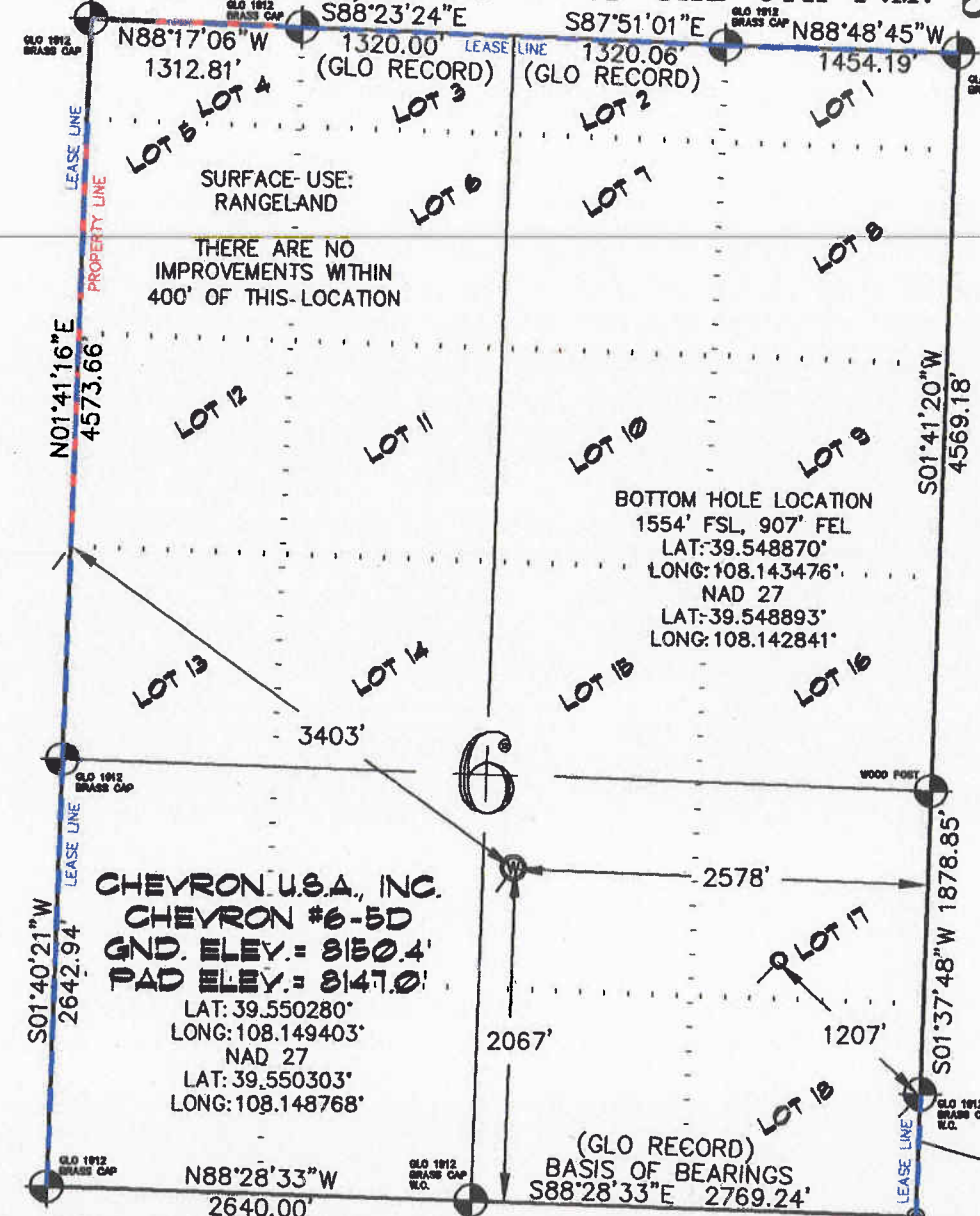


SEC. 6, T. 6 S., R. 96 W. OF THE 6TH P.M.

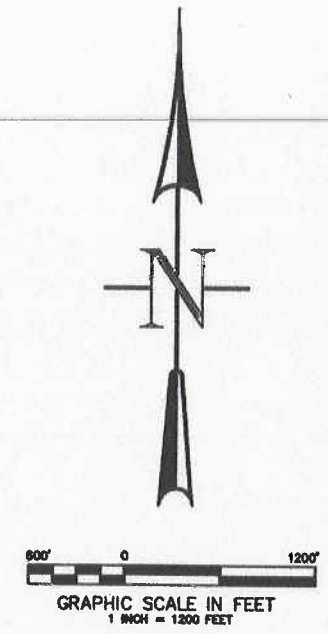
Chevron 0-06-696  
Well Location



SURFACE-USE: RANGELAND  
THERE ARE NO IMPROVEMENTS WITHIN 400' OF THIS-LOCATION

BOTTOM HOLE LOCATION  
1554' FSL, 907' FEL  
LAT: 39.548870°  
LONG: 108.143476°  
NAD 27  
LAT: 39.548893°  
LONG: 108.142841°

CHEVRON U.S.A., INC.  
CHEVRON #6-5D  
GND. ELEV. = 8150.4'  
PAD ELEV. = 8147.0'  
LAT: 39.550280°  
LONG: 108.149403°  
NAD 27  
LAT: 39.550303°  
LONG: 108.148768°



- LEGEND-**
- SECTION CORNER LOCATION  
○ BASED ON GLO RECORD INFORMATION
  - ⊙ FIELD SURVEYED SECTION CORNER LOCATIONS
  - ⊙ FIELD SURVEYED WELL LOCATION
  - CALCULATED BOTTOM HOLE LOCATION

**THIS WELL LOCATION PLAT WAS PREPARED FOR BERRY PETROLEUM COMPANY, TO LOCATE THE CHEVRON #6-5D WELL, 2067 FEET FROM THE SOUTH LINE AND 2578 FEET FROM THE EAST LINE IN THE NW1/4 SE1/4 OF SECTION 6, T. 6 S., R. 96 W. OF THE 6TH P.M. GARFIELD COUNTY, COLORADO.**

**REFERENCE NOTES**

- 1) T. 6 S., R. 96 W., 6TH P.M. GLO PLAT.
- 2) U.S.G.S. QUAD: CIRLCE DOT GULCH, CO
- 3) ELEVATIONS BASED ON N.A.V.D. 1988
- 4) LATITUDES AND LONGITUDES ARE BASED ON NAD 83, COLORADO CENTRAL ZONE.
- 5) GPS OPERATOR ROBERT WOOD, OBSERVED A PDOP OF 2.2.
- 6) ALL GPS OBSERVATIONS ARE IN COMPLIANCE WITH COGCC RULE NO. 215.
- 7) SURFACE AND BOTTOM HOLE LOCATIONS ARE MEASURED 90° FROM SECTION LINES.

**SURVEYOR'S CERTIFICATE**

I, George R. Bauer: a Professional Land Surveyor in the State of Colorado do hereby certify that this Survey was made under my direct supervision, and that this plat represents said Survey.



COLORADO P.L.S. 27925



**CONSTRUCTION SURVEYS, INC.**  
 0012 SUNRISE BLVD.  
 SILT, CO 81652  
 (970)876-5753

SURVEYED: 03/28/08	SCALE: 1" = 1200'
DRAFTED: 02/19/10	DWG: BERRY\CHEV06-696
CHECKED: 02/22/10	SHEET: 1 of 11

VIEW: 1H