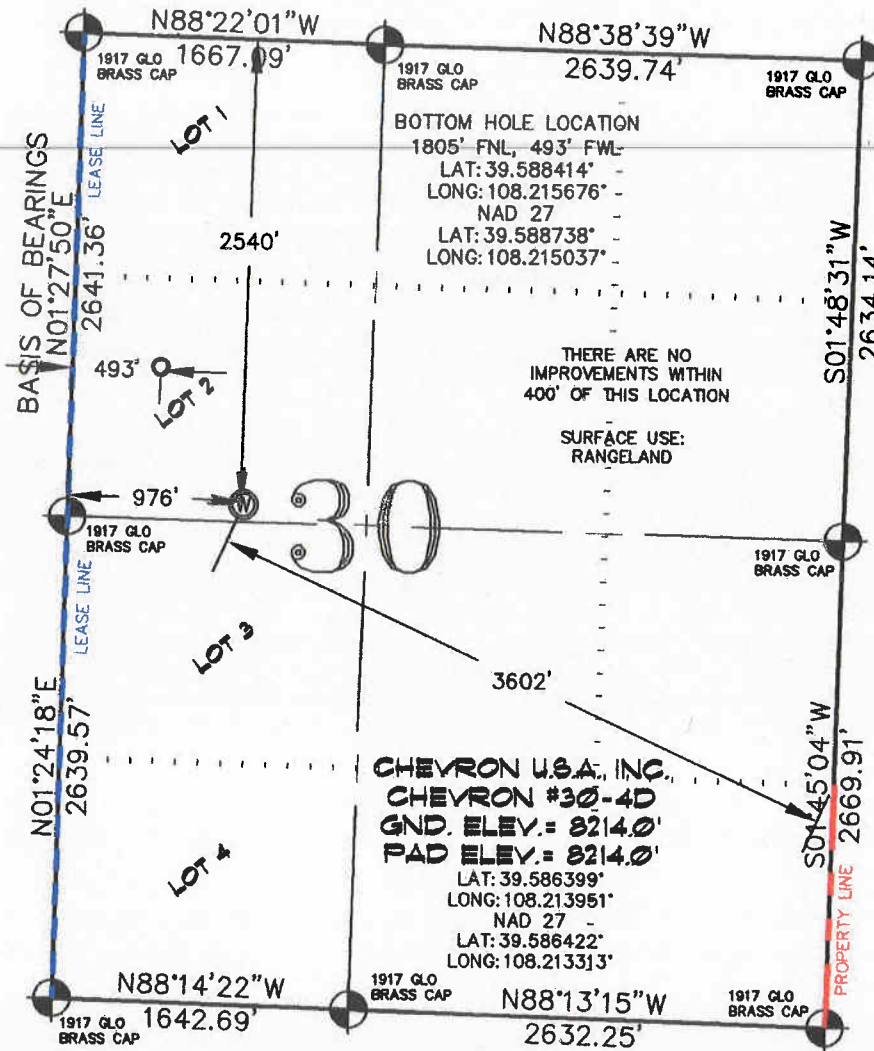


SEC. 30, T. 5 S., R. 96 W. OF THE 6TH P.M. **Chevron F30-596 Well Location**



-LEGEND-

- SECTION CORNER LOCATION BASED ON GLO RECORD INFORMATION
- ⊙ FIELD SURVEYED SECTION CORNER LOCATIONS
- ⊙ FIELD SURVEYED PAD LOCATION
- CALCULATED BOTTOM HOLE LOCATION

CHEVRON U.S.A., INC.
CHEVRON #30-4D
GND. ELEV. = 8214.0'
PAD ELEV. = 8214.0'
 LAT: 39.586399°
 LONG: 108.213951°
 NAD 27
 LAT: 39.586422°
 LONG: 108.213313°

THERE ARE NO IMPROVEMENTS WITHIN 400' OF THIS LOCATION
 SURFACE USE: RANGELAND

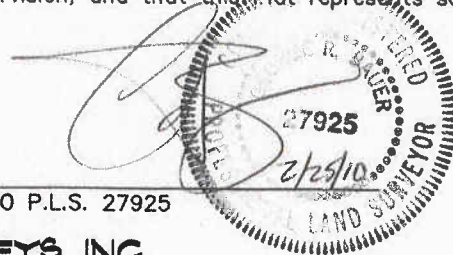
THIS WELL LOCATION PLAT WAS PREPARED FOR BERRY PETROLEUM COMPANY, TO LOCATE THE CHEVRON #30-4D WELL, 2540 FEET FROM THE NORTH LINE AND 976 FEET FROM THE WEST LINE IN LOT 2 (S 1/2 NW 1/4) SECTION 30, T. 5 S., R. 96 W. OF THE 6TH P.M. GARFIELD COUNTY, COLORADO.

REFERENCE NOTES

- 1) T. 5 S., R. 96 W., 6TH P.M. GLO PLAT.
- 2) U.S.G.S. QUAD: CIRLCE DOT GULCH, CO
- 3) ELEVATIONS BASED ON N.A.V.D. 1988
- 4) LATITUDES AND LONGITUDES ARE BASED ON NAD 83, COLORADO CENTRAL ZONE.
- 5) GPS OPERATOR IVAN MARTIN, OBSERVED A PDOP OF 2.3.
- 6) ALL GPS OBSERVATIONS ARE IN COMPLIANCE WITH COGCC RULE NO. 215.
- 7) SURFACE AND BOTTOM HOLE LOCATIONS ARE MEASURED 90° FROM SECTION LINES.

SURVEYOR'S CERTIFICATE

I, George R. Bauer: a Professional Land Surveyor in the State of Colorado do hereby certify that this Survey was made under my direct supervision, and that this Plat represents said Survey.



COLORADO P.L.S. 27925



CONSTRUCTION SURVEYS, INC.
 0012 SUNRISE BLVD
 SILT, CO 81652
 (970)876-5753

VIEW: 1B

SURVEYED: 02/12/10	SCALE: 1" = 1000'
DRAFTED: 02/23/10	DWG: BERRY\CHEVF30-596
CHECKED: 01/25/10	SHEET: 11 of