



02577019  
1120 Lincoln Street, Suite 801, Denver Colorado 80203 (303) 867-2100 FAX (303) 894-2109



OGCC

**RECEIVED**  
MAR 03 2010  
COGCC/Rifle Office

**WELL ABANDONMENT REPORT**

Submit original plus one copy. This form is to be submitted as an intent whenever a plugging is planned on a borehole. The approved intent shall be valid for twelve months after the approval date after that period a new intent will be required. After the plugging is complete, this form and one copy shall again be submitted as a subsequent report of the work as actually completed.

COGCC Operator Number: 96850  
 Name of Operator: Williams Production RMT Company  
 Address: 1515 Arapahoe St., Tower 3, #1000  
 City: Denver State: CO Zip: 80202  
 API Number: 05-045-07423  
 Well Name: Jolley Well Number: 17-6  
 Location (Qtr/Ctr, Sec, Twp, Rng, Meridian): SENW 17 T6S R91W  
 County: Garfield Federal, Indian or State Lease Number:  
 Field Name: Kokopelli Field Number: 47525

Contact Name & Telephone  
 No:  
 Fax:  
 Tel:

Complete the Attachment Checklist Oper OGCC

Wellbore Diagram	X
Cement Job Summary	
Wireline Job Summary	

Notice of Intent to Abandon

Subsequent Report of Abandonment

Only Complete the Following Background Information for Intent to Abandon

Latitude: \_\_\_\_\_ Longitude: \_\_\_\_\_  
 GPS Data: \_\_\_\_\_  
 Date of Measurement: \_\_\_\_\_ PDOP Reading: \_\_\_\_\_ Instrument Operator's Name: \_\_\_\_\_  
 Reason for Abandonment:  Dry  Production Sub-economic  Mechanical Problems  Other  
 Casing to be Pulled:  Yes  No Top of Casing Cement: \_\_\_\_\_  
 Fish in Hole:  Yes  No If yes, explain details below \_\_\_\_\_  
 Wellbore has Uncemented Casing Leaks:  Yes  No If yes, explain details below \_\_\_\_\_  
 Details: \_\_\_\_\_

**Current and Previously Abandoned Zones**

Formation	Perforations Top	Perforations Bottom	Date Abandoned	Method of Isolation (None, Squeezed, BP, Cement, etc.)	Plug Depth
Williams Fork	4678	6061	proposed	CIBP w/ 2 sx	4625

**Casing History**

String	Size of Hole	Size of Casing	Weight per ft	Setting Depth	Sacks Cement	Cement Bottom	Cement Top
Surface	12 1/4	8-5/8	36	835	425	835	surface
Production	7 7/8	4.5	11.6	6160	1632	6160	885 4200

**Plugging Procedure for Intent and Subsequent Report**

CIBP #1: Depth 4625 with 2 sacks cmt on top. CIBP #2: Depth \_\_\_\_\_ with \_\_\_\_\_ sacks cmt on top. CIBPs required on all CIBPs.  
 Set 7 \_\_\_\_\_ sks cmt from \_\_\_\_\_ 90 ft. to \_\_\_\_\_ surface \_\_\_\_\_ ft. in Casing  Open Hole  Annulus  
 Set 18 \_\_\_\_\_ sks cmt from \_\_\_\_\_ 90 ft. to \_\_\_\_\_ surface \_\_\_\_\_ ft. in Casing  Open Hole  Annulus  
 Set \_\_\_\_\_ sks cmt from \_\_\_\_\_ ft. to \_\_\_\_\_ ft. in Casing  Open Hole  Annulus  
 Set \_\_\_\_\_ sks cmt from \_\_\_\_\_ ft. to \_\_\_\_\_ ft. in Casing  Open Hole  Annulus  
 Set \_\_\_\_\_ sks cmt from \_\_\_\_\_ ft. to \_\_\_\_\_ ft. in Casing  Open Hole  Annulus

Perforate and squeeze at \_\_\_\_\_ 885 ft. with \_\_\_\_\_ 40 sacks Leave at least 100 ft. in casing  
 Perforate and squeeze at \_\_\_\_\_ ft. with \_\_\_\_\_ sacks Leave at least 100 ft. in casing  
 Perforate and squeeze at \_\_\_\_\_ ft. with \_\_\_\_\_ sacks Leave at least 100 ft. in casing  
 Set \_\_\_\_\_ sacks half in, half out surface casing from \_\_\_\_\_ ft. to \_\_\_\_\_ ft.  
 Set \_\_\_\_\_ 2 sacks at surface  
 Cut four feet below ground level, weld on plate Dry-Hole Marker:  Yes  No  
 Set \_\_\_\_\_ sacks in rat hole Set \_\_\_\_\_ sacks in mouse hole

**Additional Plugging Information for Subsequent Report Only**

Casing Recovered: \_\_\_\_\_ ft. of \_\_\_\_\_ in. casing Plugging date: \_\_\_\_\_  
 \*Wireline Contractor: \_\_\_\_\_ \*Cementing Contractor: \_\_\_\_\_  
 Type of Cement and Additives Used: \_\_\_\_\_  
 \*Attach job summaries. \_\_\_\_\_

I hereby certify that the statements made in this form are, to the best of my knowledge, true, correct, and complete.

Print Name Greg Davis Email: Greg.L.Davis@Williams.com Date: 3/2/10  
 Signed: *Greg Davis* Title: Supervisor Permits  
 OGCC Approved: *Kevin J. Kij* Title: EIT III Date: MAR 08 2010  
 CONDITIONS OF APPROVAL, IF ANY

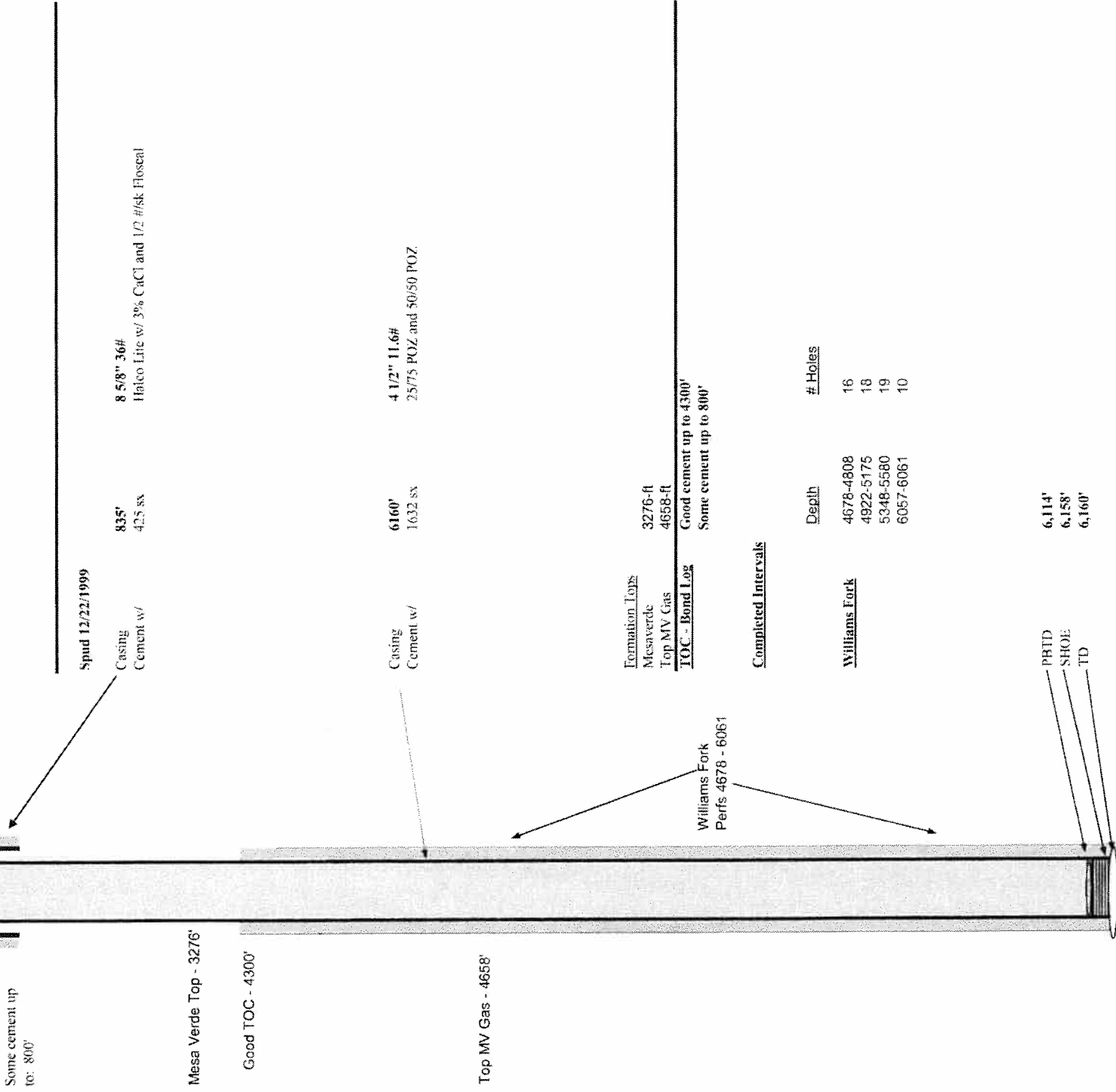


# Exploration and Production

## Current Wellbore Schematic

**RECEIVED**  
**MAR 03 2010**  
**COGCC/Rifle Office**

Wellname: Jolley 17-6  
 Location: SENW 17 T6S R91W  
 Field: Kokopelli  
 County: Garfield, CO  
 API: 050450742300  
 KB: 6205-ft  
 GR: 6189-ft  
 Footlages: 1938 FNL 1986 FWL





# Exploration and Production Proposed Well Schematic

**RECEIVED**  
MAR 03 2010  
COGCC/Rifle Office

Wellname: Jolley 17-6  
Location: SENW 17 T6S R91W  
Field: Kokopelli  
County: Garfield, CO  
API: 050450742300  
KB: 6205-ft  
GR: 6169-ft  
Footages: 1938 FNL 1986 FWL

Attempt  
Sqr. 40 sq. cmt thru 2  
holes at 1235' with  
Cmt Retainer at 885'

Some cement up  
to: 800'

2 sx above casings  
90' fill inside and outside  
4-1/2" casing

Spud 12/22/1999

Casing Cement w: 835'  
42.5 sx  
8 5/8" 36#  
Halc0 Lite w. 3% CaCl and 1.2 #/sk Fluesol

Good TOC - 4300'

Casing Cement w: 6160'  
1632 sx  
4 1/2" 11.6#  
2.575 POZ and 50.50 POZ

2 sx cement on top  
CIBP - 4625-ft

Total volume: ~81 ft3  
Neat Type III cement (1.18 lb/sack)

Plugging Cement  
on top of casings  
90' outside 4-1/2"  
90' inside 4-1/2"  
Surf Csg Shoe Sqr  
On top of CIBP

FB: 2.4  
Sx: 2  
21.2  
18  
8.3  
7  
47.2  
40  
2.4  
2

Formation Tops  
Musaverde: 3276-ft  
Top MV Gas: 4656-ft  
TOC - Bond Log: Good cement up to 4300'  
Some cement up to 800'

Volume Factors  
Inside 4-1/2" = 0.0872 ft3-ft  
Between 4-1/2" and 8-5/8" = 0.2235 ft3-ft  
Between 4-1/2" and 7-7/8" hole = 0.2510 ft3-ft

### Completed Intervals

Williams Fork	Depth	# Holes
4678-4808	4678-4808	16
4922-5175	4922-5175	18
5348-5580	5348-5580	19
6057-6061	6057-6061	10

PBTD  
SHOE  
TD

Williams Fork  
Perfs 8378 - 9967