

EOG RESOURCES, INC.
FOX CREEK #01-35H
LOCATED IN WELD COUNTY, COLORADO
SECTION 35, T12N, R63W, 6th P.M.

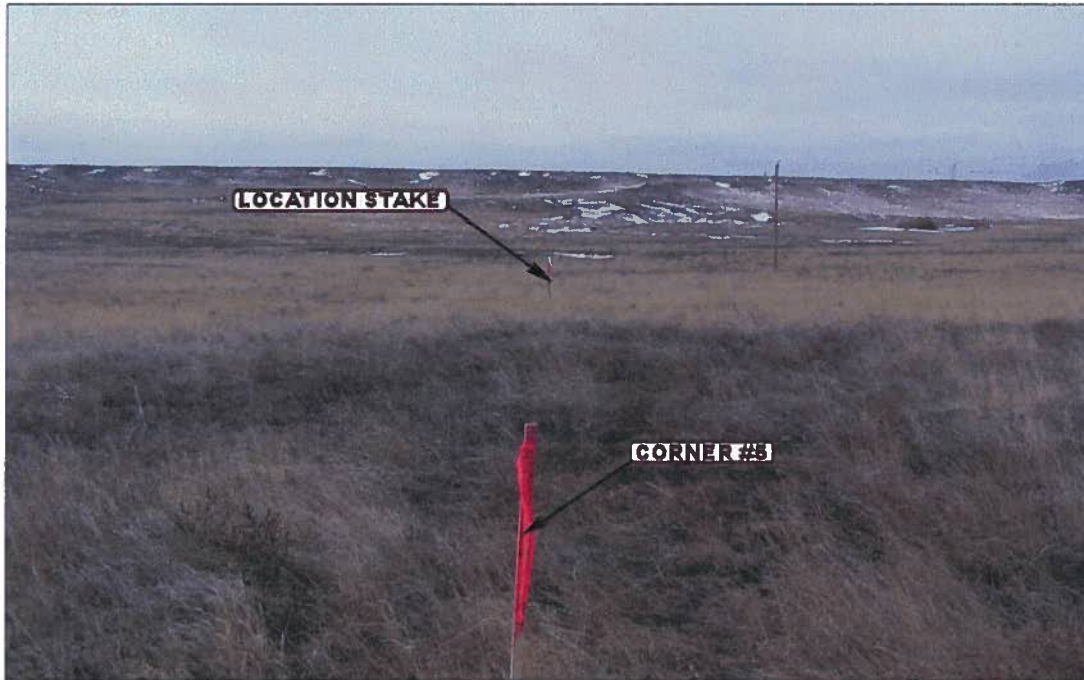


PHOTO: VIEW FROM CORNER #5 TO LOCATION STAKE

CAMERA ANGLE: SOUTHWESTERLY



PHOTO: VIEW FROM BEGINNING OF PROPOSED ACCESS

CAMERA ANGLE: SOUTHEASTERLY



Uintah Engineering & Land Surveying

85 South 200 East Vernal, Utah 84078
435-789-1017 FAX (435) 789-1813

LOCATION PHOTOS

01 18 10
MONTH DAY YEAR

PHOTO

P 1

TAKEN BY: B.H.

DRAWN BY: J.H.

REVISED: 00-00-00

EOG RESOURCES, INC.

FOX CREEK #01-35H

LOCATED IN WELD COUNTY, COLORADO

SECTION 35, T12N, R63W, 6th P.M.



PHOTO: VIEW OF LOCATION STAKE

CAMERA ANGLE: NORTHERLY



PHOTO: VIEW OF LOCATION STAKE

CAMERA ANGLE: EASTERLY



- Since 1964 -



Uintah Engineering & Land Surveying

85 South 200 East Vernal, Utah 84078

435-789-1017 FAX (435) 789-1813

LOCATION PHOTOS

01 18 10
MONTH DAY YEAR

PHOTO

P 2

TAKEN BY: B.H.

DRAWN BY: J.H.

REVISED: 00-00-00

EOG RESOURCES, INC.

FOX CREEK #01-35H

LOCATED IN WELD COUNTY, COLORADO

SECTION 35, T12N, R63W, 6th P.M.



PHOTO: VIEW OF LOCATION STAKE

CAMERA ANGLE: SOUTHERLY



PHOTO: VIEW OF LOCATION STAKE

CAMERA ANGLE: WESTERLY



Uintah Engineering & Land Surveying

85 South 200 East Vernal, Utah 84078

435-789-1017 FAX (435) 789-1813

LOCATION PHOTOS

01 18 10
MONTH DAY YEAR

PHOTO

P 3

TAKEN BY: B.H.

DRAWN BY: J.H.

REVISED: 00-00-00