

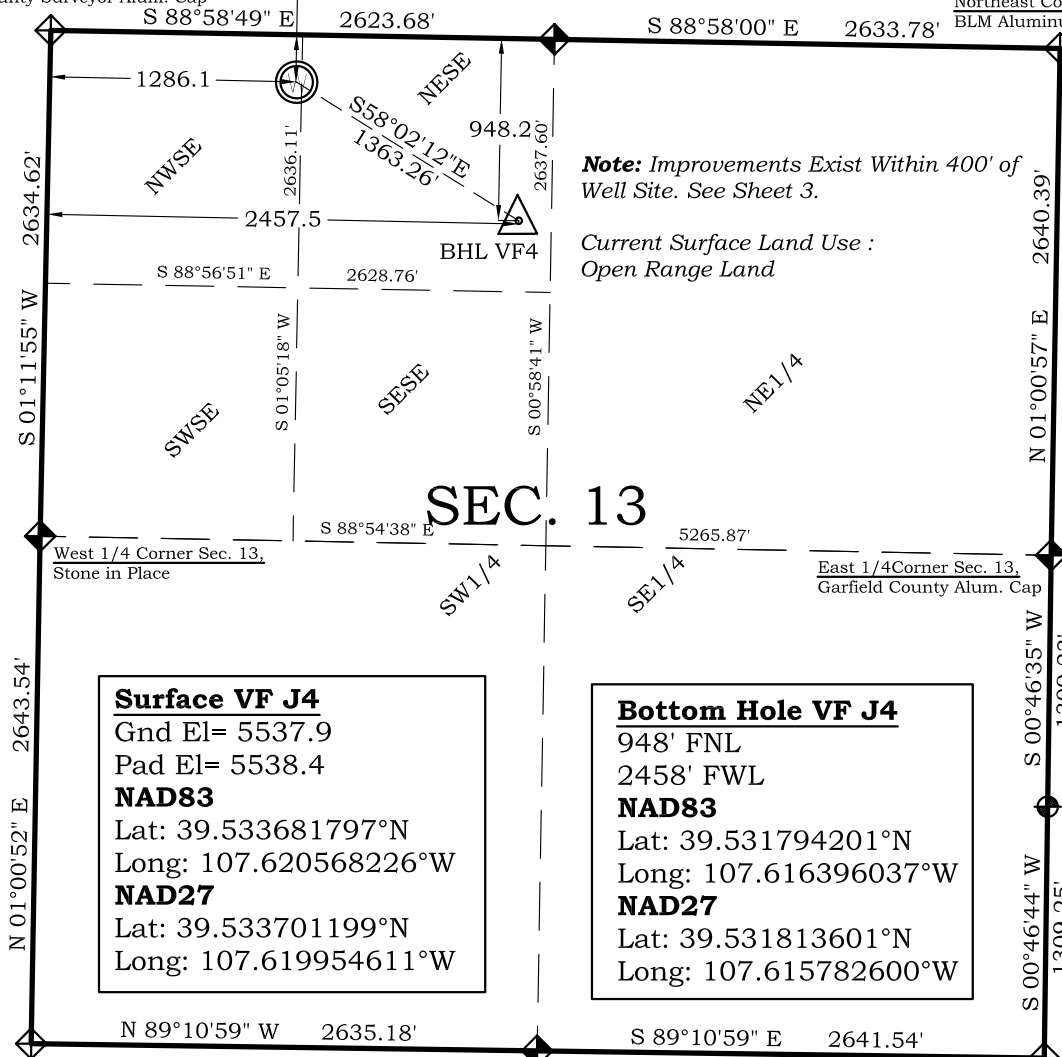
Well Location Plat Valley Farms J4

Section 13, Township 6 South, Range 92 West

Northwest Corner Sec. 13,
County Surveyor Alum. Cap

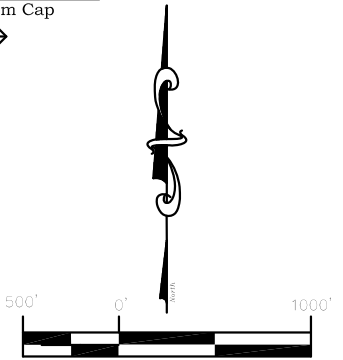
North 1/4 Corner Sec. 13,
County Surveyor Alum. Cap

Northeast Corner Sec. 13,
BLM Aluminum Cap



Note: Improvements Exist Within 400' of Well Site. See Sheet 3.

Current Surface Land Use :
Open Range Land



Graphic Scale in Feet
1"= 1000'

Legend

- Field Surveyed Section Corner
- Field Surveyed Quarter Corner
- Calculated Section Corner Location
- Field Surveyed 1/6 Corner

South 1/16 Corner
Sec. 13 and 18,
BLM Alum. Cap

Valley Farms J4

247' FNL
1286' FWL
WGS 84
LATITUDE
39.533681797°N
LONGITUDE
107.620568226°W
UTM 13 NORTH
NAD 1983
NORTHING
14367695.244
EASTING
901506.918

Surface VF J4

Gnd El= 5537.9

Pad El= 5538.4

NAD83

Lat: 39.533681797°N

Long: 107.620568226°W

NAD27

Lat: 39.533701199°N

Long: 107.619954611°W

Bottom Hole VF J4

948' FNL

2458' FWL

NAD83

Lat: 39.531794201°N

Long: 107.616396037°W

NAD27

Lat: 39.531813601°N

Long: 107.615782600°W

Prepared For Antero Resources

Proposed Valley Farms J4 Well Situate in The NW 1/4 NW 1/4
Section 13, Township 6 South, Range 92 West of the 6 th.

Principal Meridian, County of Garfield, State of Colorado

SURVEYOR'S CERTIFICATE

I, SCOTT E. AIBNER, A REGISTERED LAND SURVEYOR, LICENSED UNDER THE LAWS OF THE STATE OF COLORADO DO HEREBY CERTIFY THAT THE SURVEY SHOWN HEREON WAS PREPARED BY RIVER VALLEY SURVEY, INC., FOR ANTERO RESOURCES, BY ME OR UNDER MY DIRECT SUPERVISION AND THAT THIS PLAT IS A TRUE REPRESENTATION THEREOF.



BY:

SCOTT E. AIBNER, COLORADO REG. NO. 31143

Notes:

- LATITUDE AND LONGITUDE COORDINATES ARE DIFFERENTIALLY CORRECTED AND BASED ON PUBLISHED NGS CONTROL STATION "KOEPSSELL". SYSTEM: UTM ZONE: 13 NORTH DATUM: NAD 1983 (CONUS)
- ELEVATIONS ARE BASED ON NAVD OF 1929.
- ALL BOTTOM AND TOP HOLE LOCATIONS ARE MEASURED 90 DEGREES FROM SECTION LINE.
- USGS QUADRANGLE MAP "SILT".
- CURRENT SURFACE LAND USE: HAY FIELD.
- PDOP AT THE TIME OF LOCATION OF SURFACE WELL = 1.4



River Valley Survey, Inc.
110 East 3rd. Street, Suite 213
Rifle, Colorado 81650
Ph: 970-379-7846

Project: VALLEY FARMS J PAD

Field Date: 01-19-10

Date: 01-26-10

Scale: 1"= 1500'

Sheet: 1 of 9

Well Location Plat
Prepared For Antero Resources

Situate In:
NW 1/4 Section 13, T6S., R. 92 W. of the
6th P.M., Garfield County, Colorado

