

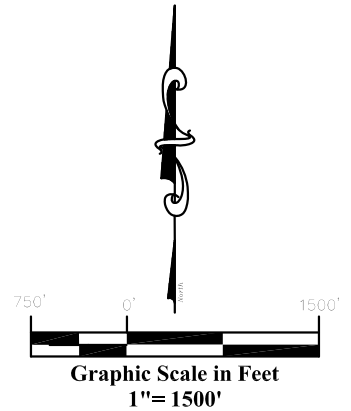
# Well Location Plat

## Valley Farms J1

### Section 13, Township 6 South, Range 92 West

#### Legend

- Field Surveyed Section Corner
- Field Surveyed Quarter Corner
- Calculated Section Corner Location
- Field Surveyed 1/16 Corner



#### Surface Valley Farms J1

Gnd El= 5536.8  
Pad El= 5538.4  
**NAD83**  
Lat: 39.533887633°N  
Long: 107.620571507°W  
**NAD27**  
Lat: 39.533907036°N  
Long: 107.619957889°W

#### Bottom Hole Valley Farms J1

489' FSL  
2412' FWL  
**NAD83**  
Lat: 39.535737202°N  
Long: 107.616608995°W  
**NAD27**  
Lat: 39.535756601°N  
Long: 107.615995500°W

#### Valley Farms J1

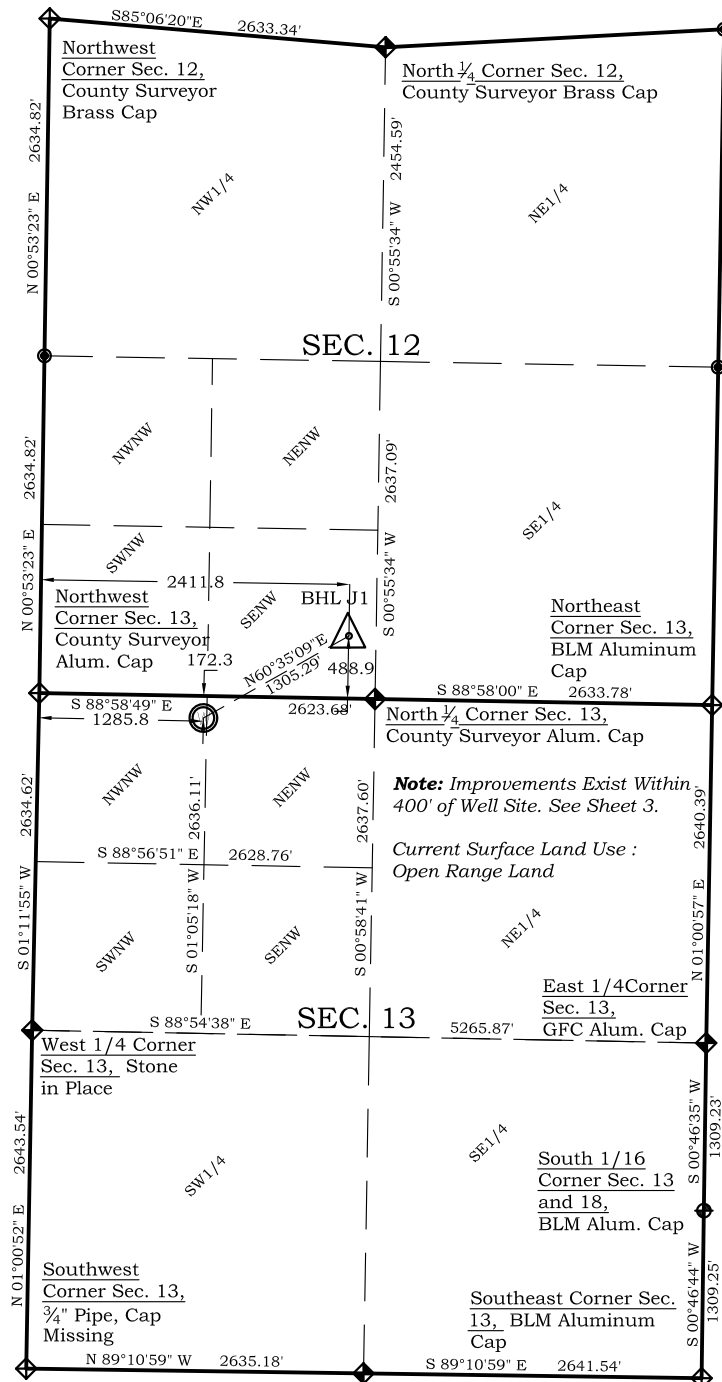
172' FNL  
1286' FWL  
WGS 84  
LATITUDE  
39.533887633°N  
LONGITUDE  
107.620571507°W  
UTM 13 NORTH  
**NAD 1983**  
NORTHING  
14367770.233  
EASTING  
901508.177

#### Prepared For Antero Resources

Proposed Valley Farms J1 Well Situate in The NW 1/4 NW 1/4  
Section 13, Township 6 South, Range 92 West of the 6 th.  
Principal Meridian, County of Garfield, State of Colorado

#### Notes:

- LATITUDE AND LONGITUDE COORDINATES ARE DIFFERENTIALLY CORRECTED AND BASED ON PUBLISHED NGS CONTROL STATION "KOEPSSELL". SYSTEM: UTM ZONE: 13 NORTH DATUM: NAD 1983 (CONUS)
- ELEVATIONS ARE BASED ON NAVD OF 1929.
- ALL BOTTOM AND TOP HOLE LOCATIONS ARE MEASURED 90 DEGREES FROM SECTION LINE.
- USGS QUADRANGLE MAP "SILT".
- CURRENT SURFACE LAND USE: HAY FIELD.
- PDOP AT THE TIME OF LOCATION OF SURFACE WELL = 1.4



#### SURVEYOR'S CERTIFICATE

I, SCOTT E. AIBNER, A REGISTERED LAND SURVEYOR, LICENSED UNDER THE LAWS OF THE STATE OF COLORADO DO HEREBY CERTIFY THAT THE SURVEY SHOWN HEREON WAS PREPARED BY RIVER VALLEY SURVEY, INC., FOR ANTERO RESOURCES, BY ME OR UNDER MY DIRECT SUPERVISION AND THAT THIS PLAT IS A TRUE REPRESENTATION THEREOF.

31143

BY:  
SCOTT E. AIBNER, COLORADO REG. NO. 31143



**River Valley Survey, Inc.**  
110 East 3rd. Street, Suite 213  
Rifle, Colorado 81650  
Ph: 970-379-7846

**Project: VALLEY FARMS J PAD**

**Field Date:** 01-19-10

**Date:** 01-26-10

**Scale:** 1"= 1500'

**Sheet:** 1 of 9

**Well Location Plat**  
**Prepared For Antero Resources**

**Situate In:**  
NW 1/4 Section 13, T6S., R. 92 W. of the  
6th P.M., Garfield County, Colorado

