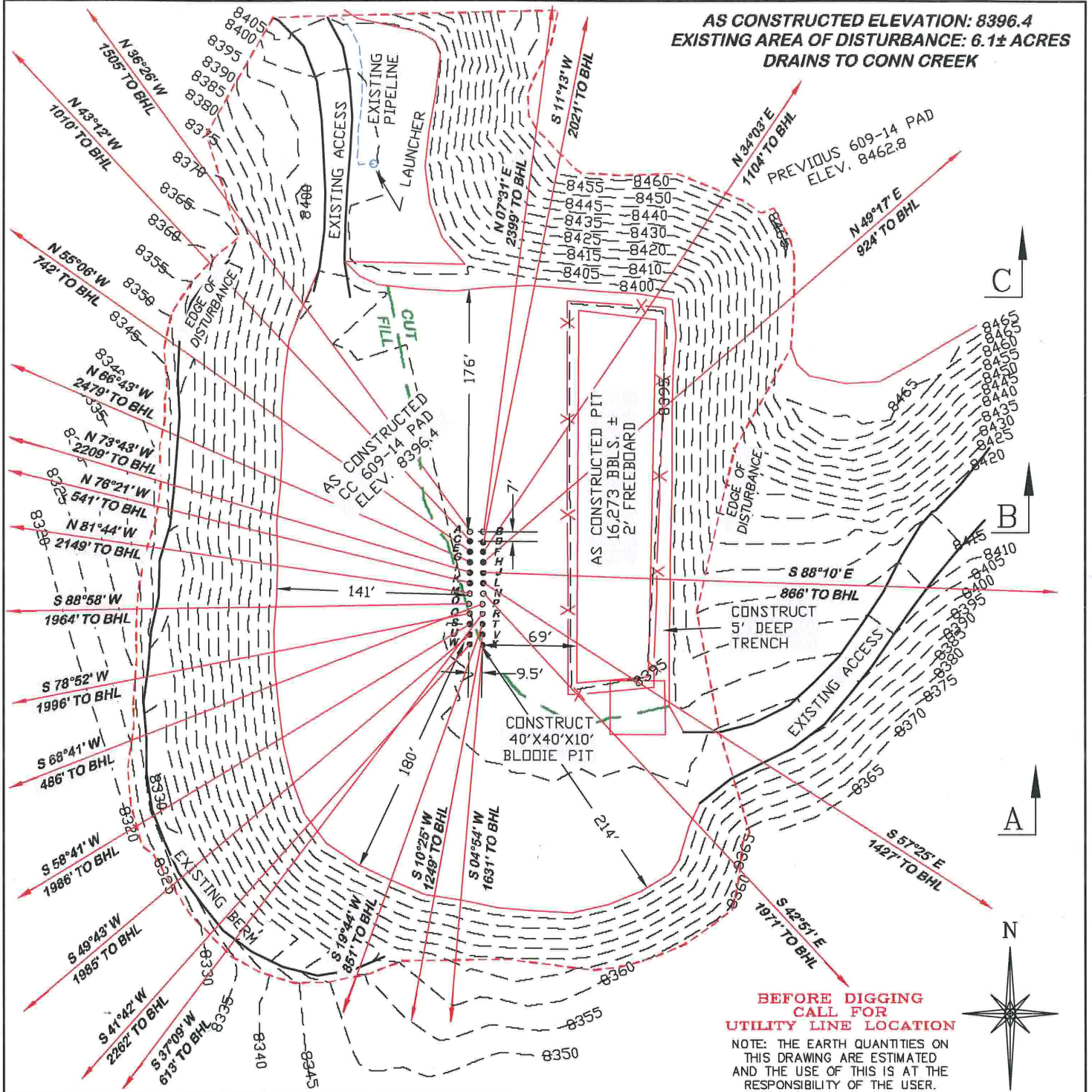


AS CONSTRUCTED ELEVATION: 8396.4
EXISTING AREA OF DISTURBANCE: 6.1± ACRES
DRAINS TO CONN CREEK



**BEFORE DIGGING
CALL FOR
UTILITY LINE LOCATION**
 NOTE: THE EARTH QUANTITIES ON
 THIS DRAWING ARE ESTIMATED
 AND THE USE OF THIS IS AT THE
 RESPONSIBILITY OF THE USER.

SLOT	WELL	SLOT	WELL	SLOT	WELL	SLOT	WELL
A	697-08-56A	G	697-08-54A	M	697-08-62A	S	697-17-14
B	697-08-33A	H	697-08-50B	N	697-16-11B	T	697-16-01
C	697-08-56B	I	697-08-54B	O	697-08-62B	U	697-17-15
D	697-09-33B	J	697-09-58	P	697-17-08A	V	697-16-09A
E	697-08-64A	K	697-08-64B	Q	697-17-06A	W	697-17-23A
F	697-09-50A	L	697-16-02B	R	697-17-08B	X	697-16-09B

CC 609-14 PAD

CONSTRUCTION LAYOUT DRAWING 1 OF 5

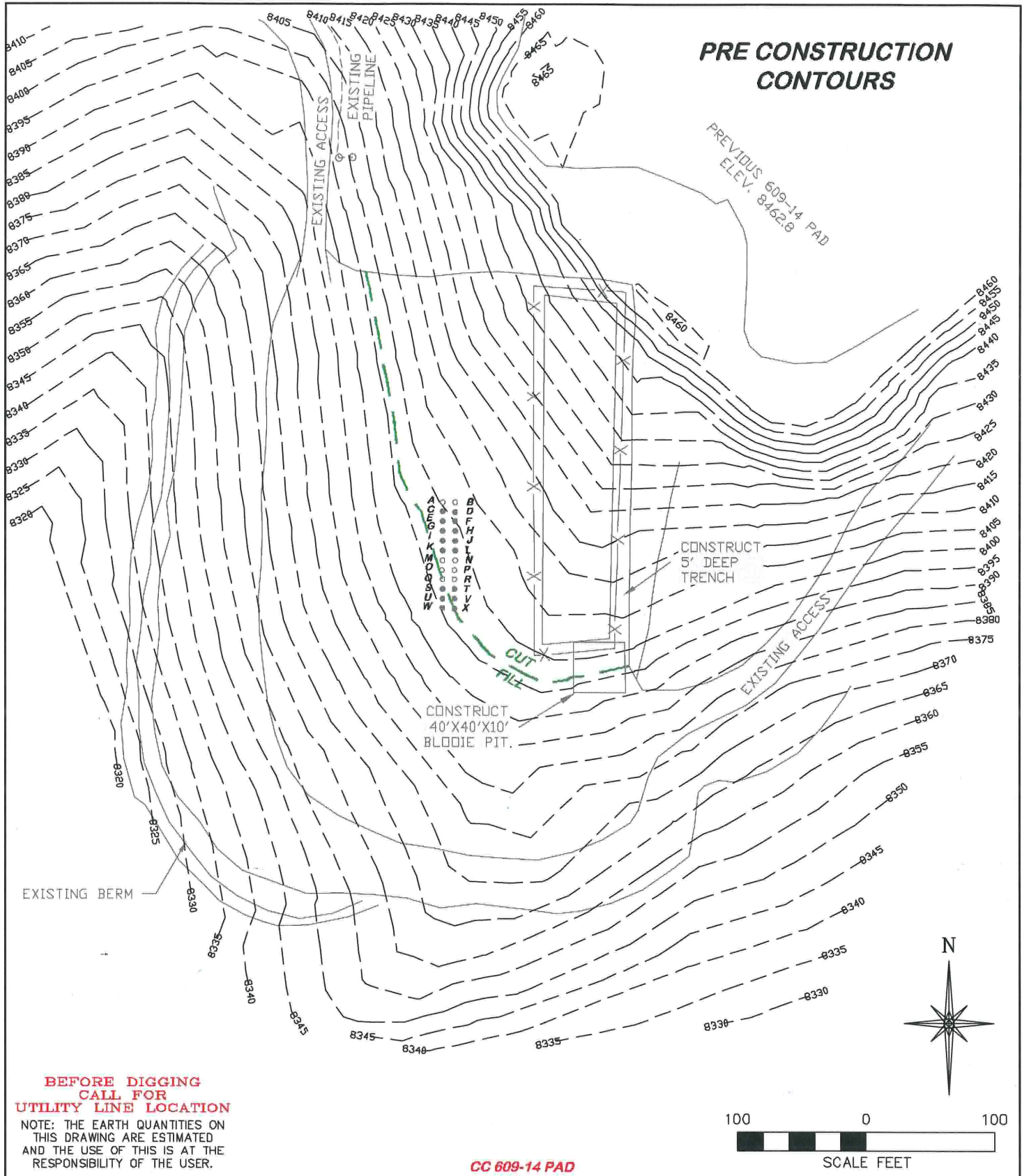
OXY USA WIP LP
CASCADE CREEK 697-09-33A, 33B, 50A, 50B, 58, 697-08-56A, 56B, 64A, 54A, 54B, 64B, 62A, 62B, 697-16-02B, 11B, 01, 09A, 09B, 697-17-08A, 06A, 08B, 14, 15, & 23A, SW1/4 OF SW1/4 SECTION 9, T. 6 S., R. 97 W., 6th P.M., GARFIELD COUNTY, COLORADO

ESTIMATED EARTHWORK

ITEM	CUT	FILL	TOPSOIL	EXCESS
PAD	EXISTS	EXISTS	EXISTS	EXISTS
PIT	EXISTS	EXISTS	EXISTS	EXISTS
TOTALS	EXISTS	EXISTS	EXISTS	EXISTS

DRG RIFFIN & ASSOCIATES, INC.
 1414 ELK ST., ROCK SPRINGS, WY 82901
 (307) 362-5028

DRAWN: 1/11/10 - DEH	SCALE: 1" = 100'
REVISED: N/A	DRG JOB No. 10841
EXHIBIT 2	



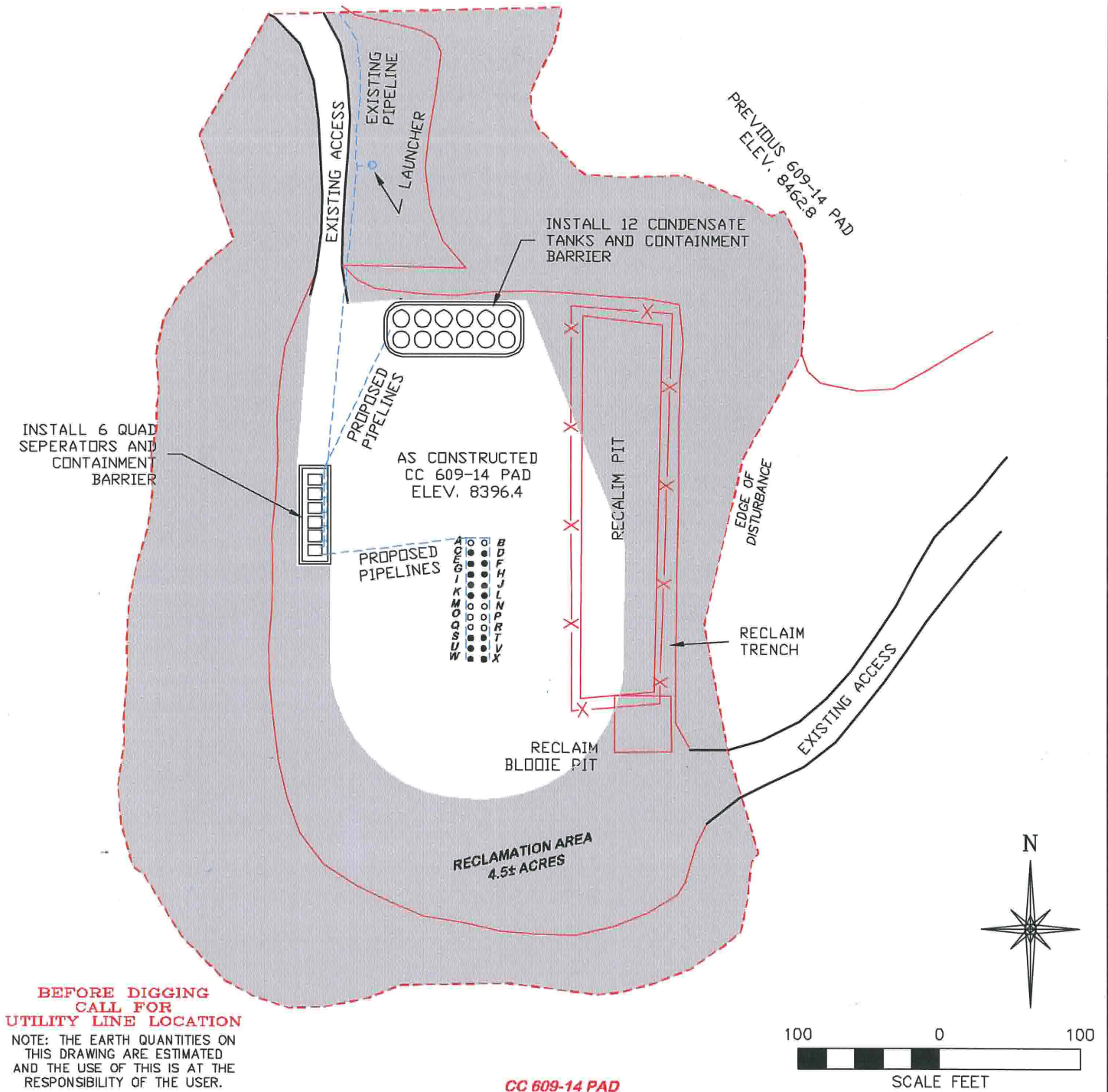
**BEFORE DIGGING
CALL FOR
UTILITY LINE LOCATION**
NOTE: THE EARTH QUANTITIES ON
THIS DRAWING ARE ESTIMATED
AND THE USE OF THIS IS AT THE
RESPONSIBILITY OF THE USER.

CC 609-14 PAD

 DRG RIFFIN & ASSOCIATES, INC. (307) 362-6028 1414 ELK ST., ROCK SPRINGS, WY 82901	
REVISED: N/A	DRG JOB No. 10841
EXHIBIT 2B	

CONSTRUCTION LAYOUT DRAWING 3 OF 5
PRE CONSTRUCTION CONTOURS OXY USA WTP LP CASCADE CREEK 697-09-33A, 33B, 50A, 50B, 58, 697-08-56A, 56B, 64A, 54A, 54B, 64B, 62A, 62B, 697-16-02B, 11B, 01, 09A, 09B, 697-17-08A, 06A, 08B, 14, 15, & 23A, SW1/4 OF SW1/4 SECTION 9, T. 6 S., R. 97 W., 6th P.M., GARFIELD COUNTY, COLORADO

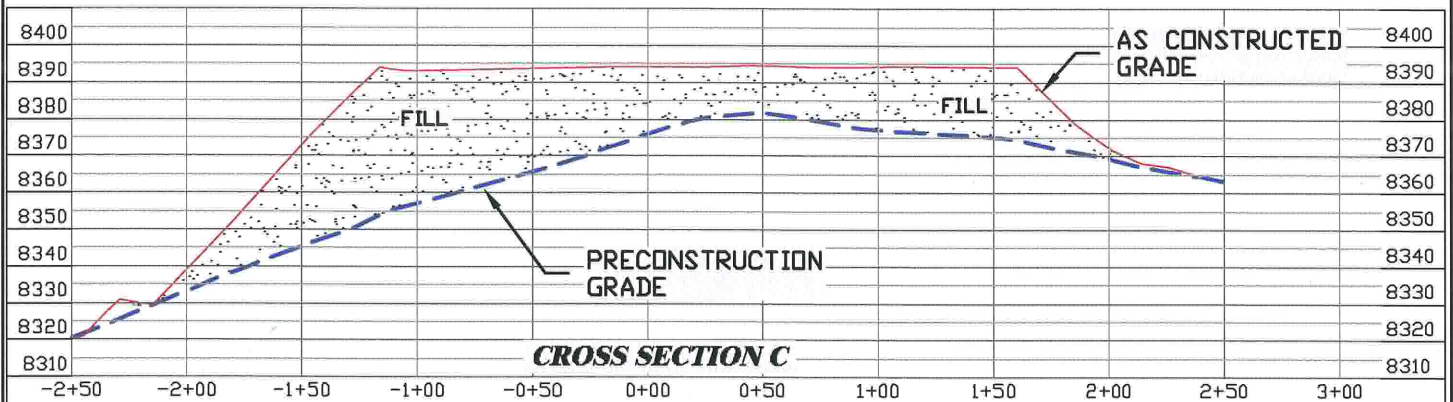
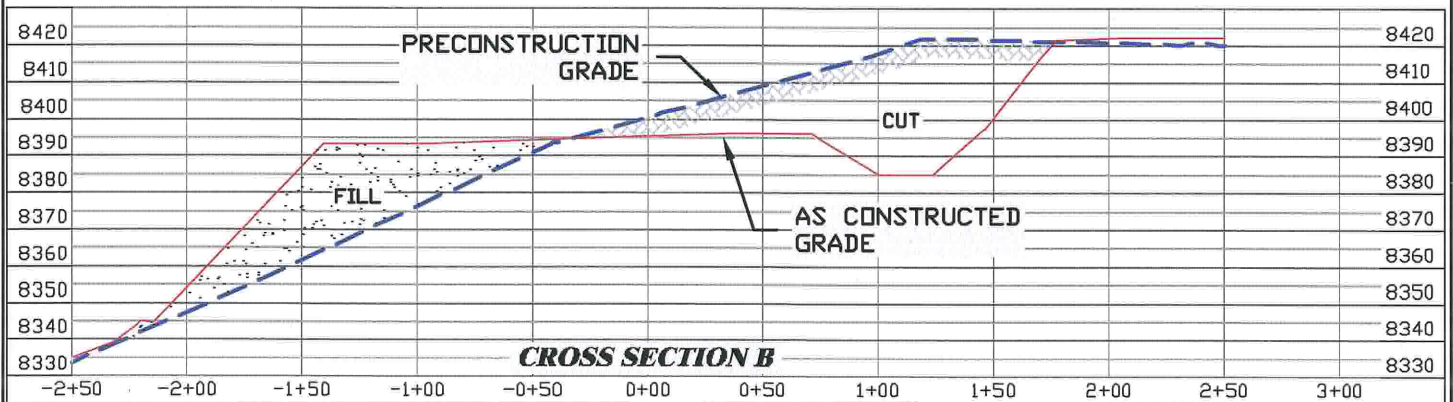
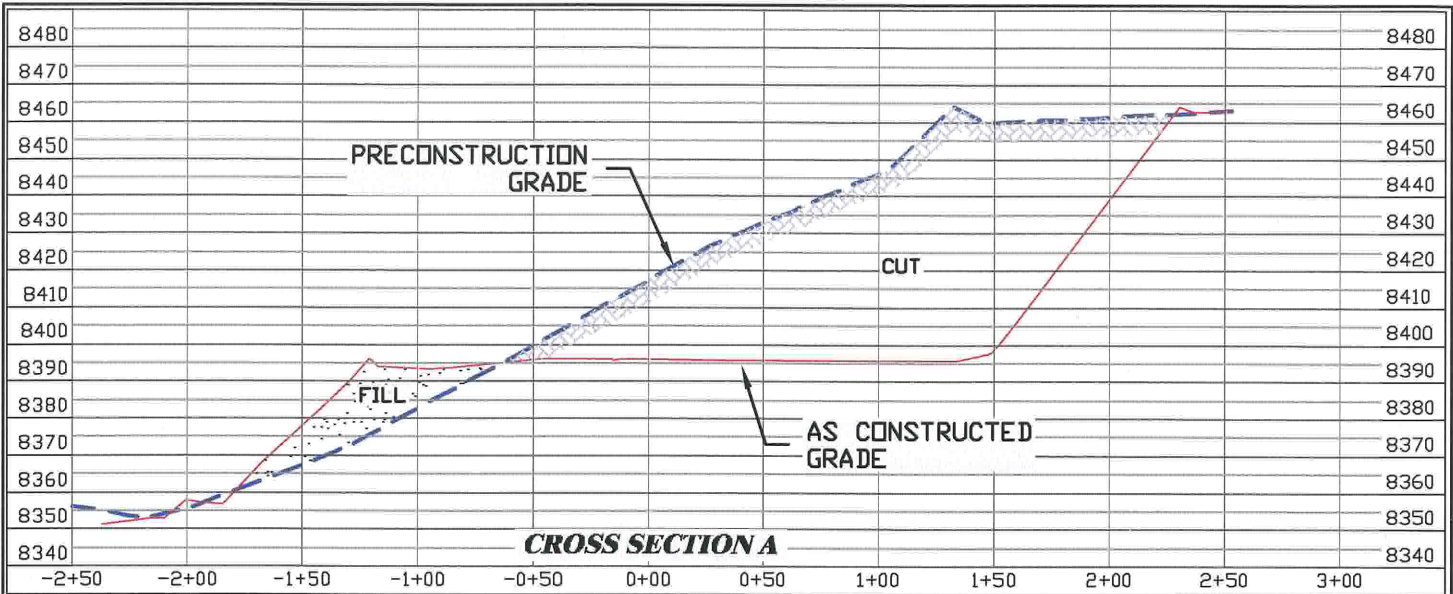
RECLAMATION PLAN



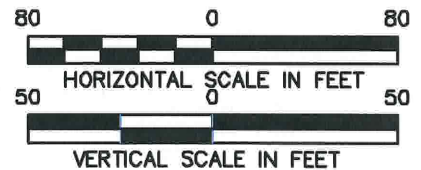
DRG RIFFIN & ASSOCIATES, INC.
 (307) 362-5028 1414 ELK ST., ROCK SPRINGS, WY 82901

DRAWN: 12/16/09 - DEH	SCALE: 1" = 100'
REVISED: N/A	DRG JOB No. 10841
	EXHIBIT 2C

CONSTRUCTION LAYOUT DRAWING 4 OF 5
PROPOSED RECLAMATION
OXY USA WTP LP
CASCADE CREEK 697-09-33A, 33B, 50A, 50B, 58, 697-08-56A, 56B, 64A, 54A, 54B, 62A, 62B, 697-16-02B, 11B, 01, 09A, 09B, 697-17-08A, 06A, 08B, 14, 15, & 23A, SW1/4 OF SW1/4 SECTION 9, T. 6 S., R. 97 W., 6th P.M., GARFIELD COUNTY, COLORADO



GRADED ELEVATION = 8396.4



CC 609-14 PAD



CONSTRUCTION LAYOUT DRAWING 5 OF 5

OXY USA WTP LP
 CASCADE CREEK 697-09-33A, 33B, 50A, 50B, 58,
 697-08-56A, 56B, 64A, 54A, 54B, 64A, 62A, 62B, 697-16-02B,
 11B, 01, 09A, 09B, 697-17-08A, 06A, 08B, 14, 15, & 23A,
 SW1/4 OF SW1/4 SECTION 9,
 T. 6 S., R. 97 W., 6th P.M.,
 GARFIELD COUNTY, COLORADO

DRAWN: 12/16/09 - DEH

HORZ. 1" = 80' VERT. 1" = 50'

REVISED: N/A

DRG JOB No.10841

EXHIBIT 3