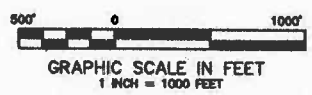
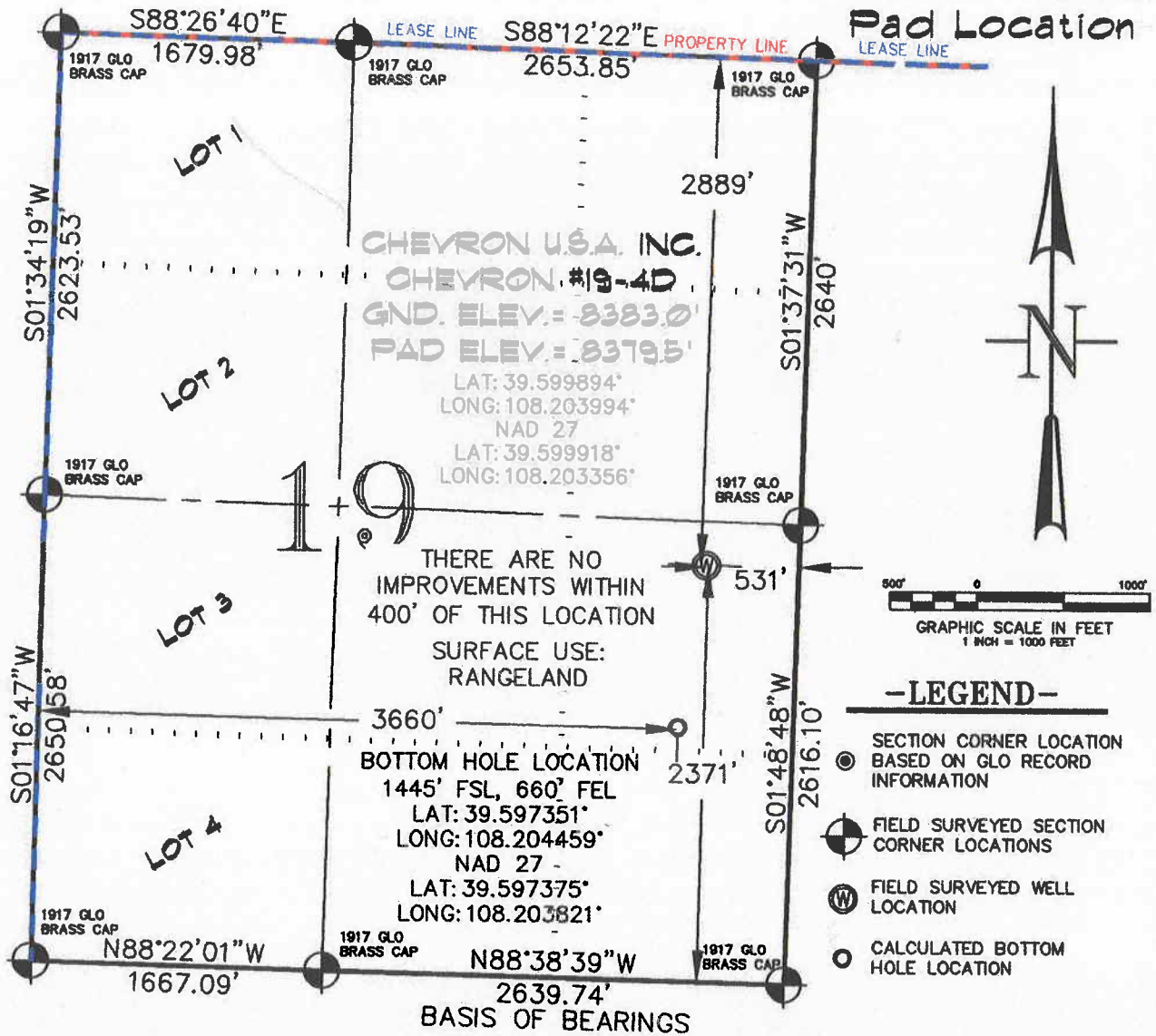


SEC. 19, T. 5 S., R. 96 W. OF THE 6TH P.M. Chevron 1-19-596



-LEGEND-

- SECTION CORNER LOCATION BASED ON GLO RECORD INFORMATION
- ⊙ FIELD SURVEYED SECTION CORNER LOCATIONS
- ⊙ FIELD SURVEYED WELL LOCATION
- CALCULATED BOTTOM HOLE LOCATION

CHEVRON U.S.A. INC.
 CHEVRON #19-4D
 GND. ELEV. = 8383.0'
 PAD ELEV. = 8379.5'
 LAT: 39.599894°
 LONG: 108.203994°
 NAD 27
 LAT: 39.599918°
 LONG: 108.203356°

THERE ARE NO IMPROVEMENTS WITHIN 400' OF THIS LOCATION
 SURFACE USE: RANGELAND

BOTTOM HOLE LOCATION
 1445' FSL, 660' FEL
 LAT: 39.597351°
 LONG: 108.204459°
 NAD 27
 LAT: 39.597375°
 LONG: 108.203821°

2639.74'
 BASIS OF BEARINGS

THIS WELL LOCATION PLAT WAS PREPARED FOR BERRY PETROLEUM COMPANY, LLC. TO LOCATE THE CHEVRON #19-4D WELL, 2371 FEET FROM THE SOUTH LINE AND 531 FEET FROM THE EAST LINE IN THE NE1/4 SE1/4 OF SECTION 19, T. 5 S., R. 96 W. OF THE 6TH P.M. GARFIELD COUNTY, COLORADO.

REFERENCE NOTES

- 1) T. 5 S., R. 96 W., 6TH P.M. GLO PLAT.
- 2) U.S.G.S. QUAD: CIRLCE DOT GULCH, CO
- 3) ELEVATIONS BASED ON N.A.V.D. 1988
- 4) LATITUDES AND LONGITUDES ARE BASED ON NAD 83, COLORADO CENTRAL ZONE.
- 5) GPS OPERATOR ROBERT WOOD, OBSERVED A PDOP OF 2.8.
- 6) ALL GPS OBSERVATIONS ARE IN COMPLIANCE WITH COGCC RULE NO. 215.
- 7) SURFACE AND BOTTOM HOLE LOCATIONS ARE MEASURED 90° FROM SECTION LINES.

SURVEYOR'S CERTIFICATE

I, George R. Bauer: a Professional Land Surveyor in the State of Colorado do hereby certify that this Survey was made under my direct supervision, and that this Plat represents said Survey.



COLORADO P.L.S. 27925



CONSTRUCTION SURVEYS, INC.
 0012 SUNRISE BLVD.
 SILT, CO 81652
 (970)876-5753

VIEW: 1H

SURVEYED: 03/29/06	SCALE: 1" = 1000'
DRAFTED: 02/12/10	DWG: BERRY\CHEV 119-596
CHECKED: 02/16/10	SHEET: 1 of 11