

T6S, R97W, 6th P.M.

BERRY PETROLEUM COMPANY

Well location, OXY 21-7D, located as shown in the NE 1/4 SE 1/4 of Section 21, T6S, R97W, 6th P.M., Garfield County, Colorado.

BASIS OF ELEVATION

SPOT ELEVATION AT THE NORTHWEST CORNER OF SECTION 30, T5S, R95W, 6th P.M. TAKEN FROM THE FORKED GULCH QUADRANGLE, COLORADO, GARFIELD COUNTY, 7.5 MINUTE SERIES (TOPOGRAPHICAL MAP) PUBLISHED BY THE UNITED STATES DEPARTMENT OF THE INTERIOR, GEOLOGICAL SURVEY. SAID ELEVATION IS MARKED AS BEING 5966 FEET.

BASIS OF BEARINGS

BASIS OF BEARINGS IS A G.P.S. OBSERVATION.



Sheet 1g of 12



SCALE

CERTIFICATE

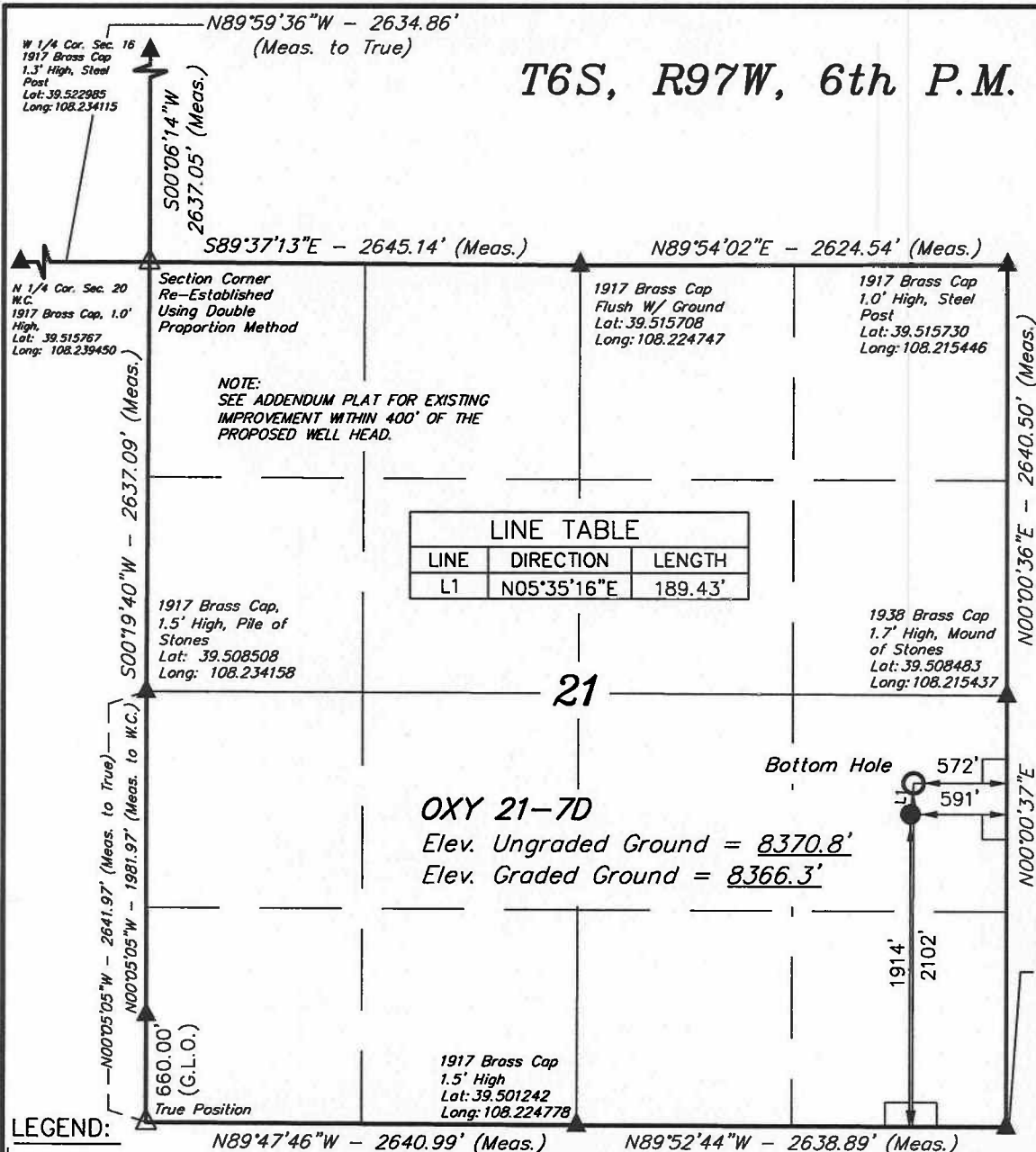
THIS IS TO CERTIFY THAT THE ABOVE PLAT WAS PREPARED AND LOCATION AS SHOWN WAS STAKED ON THE GROUND FROM FIELD NOTES OF ACTUAL SURVEYS MADE BY ME OR UNDER MY SUPERVISION AND THAT THE SAME ARE TRUE AND CORRECT TO THE BEST OF MY KNOWLEDGE AND BELIEF.

1917 Brass Cap
2.0' High
Lat: 39.501236
Long: 108.215428

REGISTERED LAND SURVEYOR
REGISTRATION NO. 1432
STATE OF COLORADO

REVISED: 09-14-09 C.H.
REVISED: 08-18-09 C.H.

UINTAH ENGINEERING & LAND SURVEYING
85 SOUTH 200 EAST - VERNAL, UTAH 84078
(435) 789-1017



NAD 83 (TARGET BOTTOM HOLE)		NAD 83 (SURFACE LOCATION)	
LATITUDE = 39°30'25.23" (39.507008)		LATITUDE = 39°30'23.36" (39.506489)	
LONGITUDE = 108°13'02.87" (108.217464)		LONGITUDE = 108°13'03.10" (108.217528)	
NAD 27 (TARGET BOTTOM HOLE)		NAD 27 (SURFACE LOCATION)	
LATITUDE = 39°30'25.31" (39.507030)		LATITUDE = 39°30'23.44" (39.506511)	
LONGITUDE = 108°13'00.57" (108.216825)		LONGITUDE = 108°13'00.80" (108.216889)	

SCALE 1" = 1000'	DATE SURVEYED: 01-29-07	DATE DRAWN: 03-07-08
PARTY B.J. B.H. D.R.B.	REFERENCES G.L.O. PLAT	
WEATHER COLD	FILE BERRY PETROLEUM COMPANY	