

**T6S, R97W, 6th P.M.**

# BERRY PETROLEUM COMPANY

Well location, OXY 33-5D, located as shown in LOT 4 of Section 33, T6S, R97W, 6th P.M., Garfield County, Colorado.

## BASIS OF ELEVATION

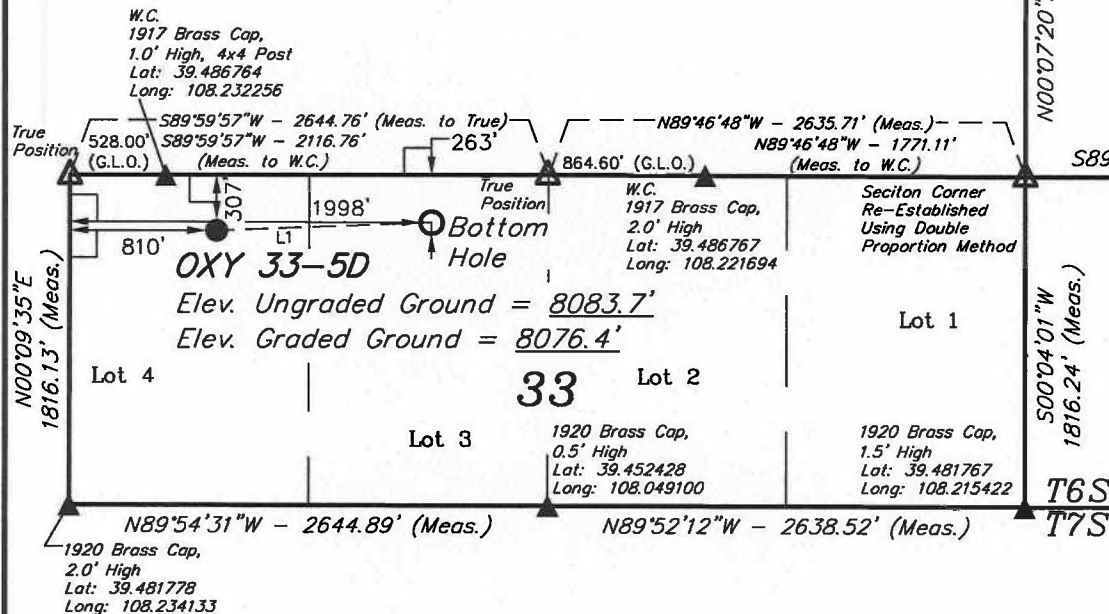
SPOT ELEVATION AT THE NORTHWEST CORNER OF SECTION 30, T5S, R95W, 6th P.M. TAKEN FROM THE FORKED GULCH QUADRANGLE, COLORADO, GARFIELD COUNTY, 7.5 MINUTE SERIES (TOPOGRAPHICAL MAP) PUBLISHED BY THE UNITED STATES DEPARTMENT OF THE INTERIOR, GEOLOGICAL SURVEY. SAID ELEVATION IS MARKED AS BEING 5966 FEET.

## BASIS OF BEARINGS

BASIS OF BEARINGS IS A G.P.S. OBSERVATION.

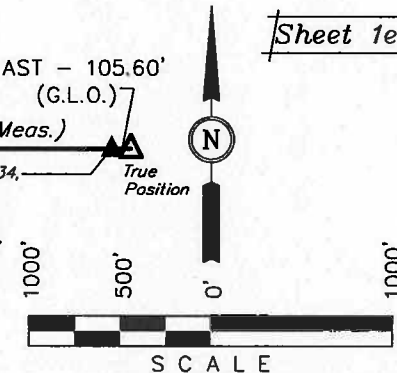
E 1/4 Cor. Sec. 28,  
1917 Brass Cap,  
1.7' High  
Lat: 39.494008  
Long: 108.215411

LINE TABLE		
LINE	DIRECTION	LENGTH
L1	N87°53'02"E	1188.65'



EAST - 105.60'  
(G.L.O.)

N 1/4 Cor. Sec. 34,  
W.C. 1917 Brass  
Cap, 2.2' High  
Lat: 39.486769  
Long: 108.206467



## CERTIFICATE

THIS IS TO CERTIFY THAT THE ABOVE PLAT WAS PREPARED FROM FIELD NOTES OF ACTUAL SURVEYS MADE BY ME OR UNDER MY SUPERVISION AND THAT THE SAME ARE TRUE AND CORRECT TO THE BEST OF MY KNOWLEDGE AND BELIEF.

REGISTERED LAND SURVEYOR  
REGISTRATION NO. 12922  
STATE OF COLORADO

## LEGEND:

- └ = 90° SYMBOL
- = PROPOSED WELL HEAD.
- Δ = SECTION CORNERS RE-ESTABLISHED.  
(Not Set on Ground)
- ▲ = SECTION CORNERS LOCATED.

NOTE:  
SEE ADDENDUM TO LEGAL PLAT FOR  
EXISTING IMPROVEMENTS WITHIN 400'  
OF THE PROPOSED WELL HEAD.

PDOP = 2.8

NAD 83 (TARGET BOTTOM HOLE)	NAD 83 (SURFACE LOCATION)
LATITUDE = 39°29'09.77" (39.486047)	LATITUDE = 39°29'09.32" (39.485922)
LONGITUDE = 108°13'37.38" (108.227050)	LONGITUDE = 108°13'52.52" (108.231256)
NAD 27 (TARGET BOTTOM HOLE)	NAD 27 (SURFACE LOCATION)
LATITUDE = 39°29'09.85" (39.486069)	LATITUDE = 39°29'09.40" (39.485944)
LONGITUDE = 108°13'35.08" (108.226411)	LONGITUDE = 108°13'50.22" (108.233617)

## UINTAH ENGINEERING & LAND SURVEYING

85 SOUTH 200 EAST - VERNAL, UTAH 84078

(435) 789-1017

SCALE 1" = 1000'	DATE SURVEYED: 08-12-09	DATE DRAWN: 09-07-09
PARTY B.J. B.B. K.G.	REFERENCES G.L.O. PLAT	
WEATHER WARM	FILE BERRY PETROLEUM COMPANY	

Sheet 1e of 12