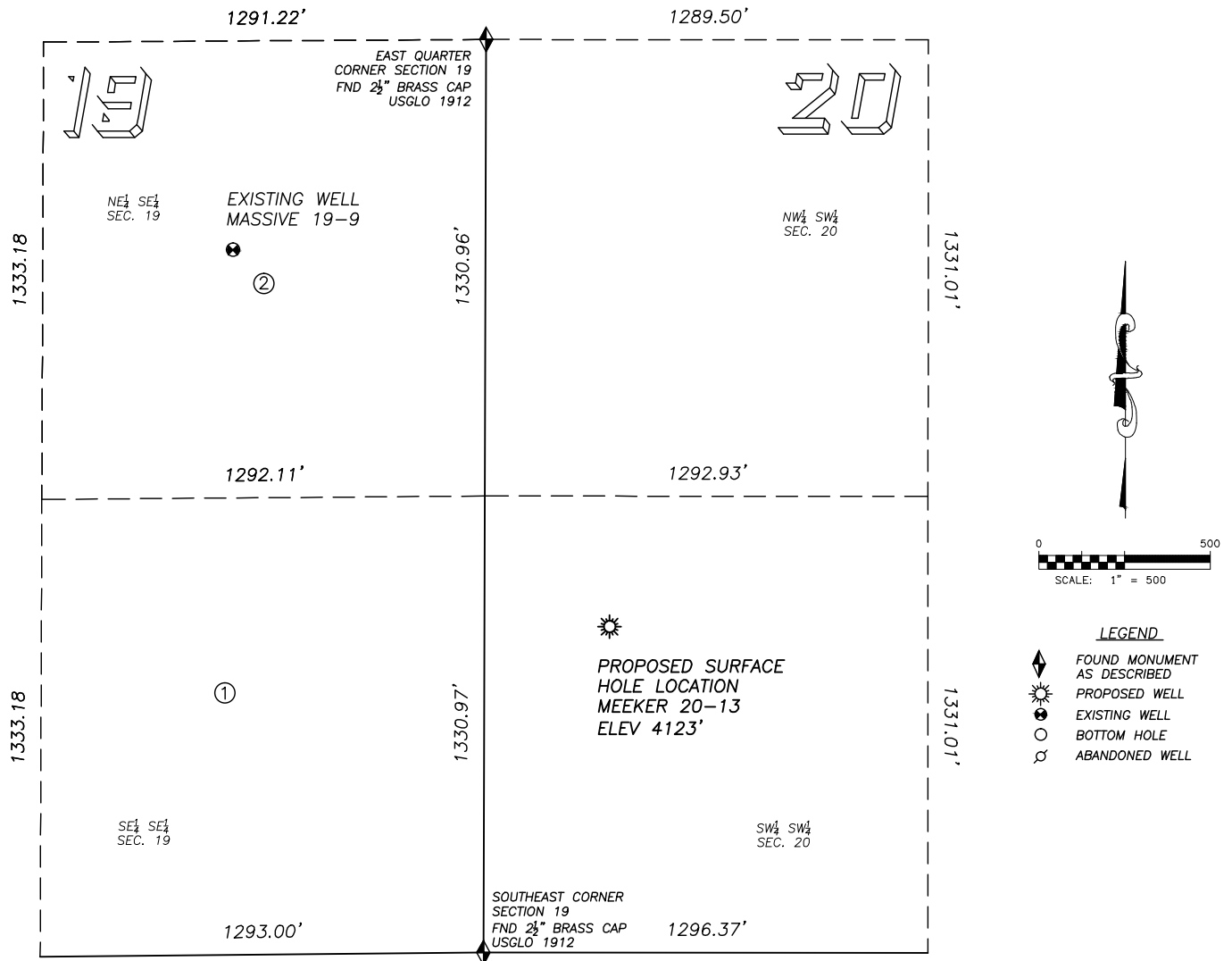


SITE SKETCH MEEKER 20-13

SECTION 20, TOWNSHIP 2 SOUTH, RANGE 46 WEST OF THE 6TH PRINCIPAL MERIDIAN



①

MASSIVE 19-9

NE/SE SEC. 19
 2055' FSL, 737' FEL
 1554' NW OF PROPOSED
 SURFACE HOLE LOCATION
 LAT. N39.86636°
 LONG. W102.56045°
 EL: 4124'
 PDOP 1.3

NOTES:

1. THIS DOES NOT REPRESENT A BOUNDARY SURVEY
2. THE LATITUDES AND LONGITUDES SHOWN ARE REFERENCED TO NAD83
3. DATUM FOR ELEVATION IS NAVD88. ELEVATIONS ARE DERIVED FROM GPS-RTK OBSERVATIONS PROCESSED THROUGH OPUS, UTILIZING THE GEOID03 MODEL.